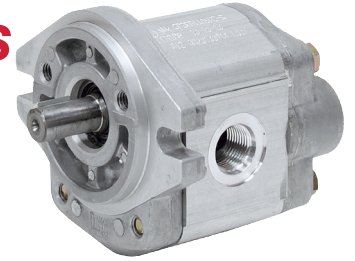




## Prince SP20 Gear Pumps

- Available in CW or CCW rotation with either 5/8" diam. x 1 1/4" keyed shaft or 5/8"-9 tooth splined shaft. Side Ports. Two bolt SAE A mounting flange with 3 1/4" pilot diam.

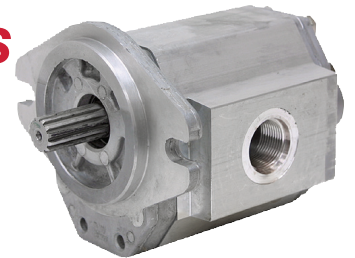


ITEM	Displ.	GPM at 2000 RPM	Rotation	Shaft	Max Pressure	Max. RPM	Inlet Port	Outlet Port	Shpg.	Price
9-1895-B	0.499	4.04	CW	5/8" Keyed	3000	4000	SAE 12	SAE 10	8 lbs.	\$274.85
9-1895-C	0.499	4.04	CCW	5/8-9 Tooth Splined	3000	4000	SAE 12	SAE 10	8 lbs.	\$253.00
9-1896-B	0.589	4.75	CW	5/8" Keyed	3000	4000	SAE 12	SAE 10	8 lbs.	\$253.00
9-1896-D	0.589	4.75	CCW	5/8" Keyed	3000	4000	SAE 12	SAE 10	8 lbs.	\$272.35
9-1897-A	0.677	5.63	CW	5/8-9 Tooth Splined	3000	4000	SAE 12	SAE 10	8 lbs.	\$256.90
9-1897-B	0.677	5.63	CW	5/8" Keyed	3000	4000	SAE 12	SAE 10	8 lbs.	\$279.55
9-1898-A	0.86	7.01	CW	5/8-9 Tooth Splined	3000	4000	SAE 12	SAE 10	9 lbs.	\$256.90
9-1898-B	0.86	7.01	CW	5/8" Keyed	3000	4000	SAE 12	SAE 10	9 lbs.	\$253.00
9-1788-A	0.976	7.93	CW	5/8-9 Tooth Splined	3000	4000	SAE 12	SAE 10	9 lbs.	\$253.00
9-1788-B	0.976	7.93	CW	5/8" Keyed	3000	4000	SAE 12	SAE 10	9 lbs.	\$272.35
9-1788-D	0.976	7.93	CCW	5/8" Keyed	3000	4000	SAE 12	SAE 10	9 lbs.	\$256.90
9-1899-A	1.22	10.05	CW	5/8-9 Tooth Splined	3000	4000	SAE 16	SAE 12	9 lbs.	\$274.85
9-1899-B	1.22	10.05	CW	5/8" Keyed	3000	3500	SAE 16	SAE 12	9 lbs.	\$256.90
9-1899-C	1.22	10.05	CCW	5/8-9 Tooth Splined	3000	3500	SAE 16	SAE 12	9 lbs.	\$371.40
9-1900-A	1.403	11.6	CW	5/8-9 Tooth Splined	2500	3500	SAE 16	SAE 12	10 lbs.	\$381.90
9-1900-B	1.403	11.6	CW	5/8" Keyed	2500	3500	SAE 16	SAE 12	10 lbs.	\$403.20
9-1901-A	1.654	13.9	CW	5/8-9 Tooth Splined	2500	3500	SAE 16	SAE 12	10 lbs.	\$415.95
9-1901-B	1.654	13.9	CW	5/8" Keyed	2500	3500	SAE 16	SAE 12	10 lbs.	\$384.35



## Prince SP25 Gear Pumps

- Available in CW or CCW rotation with either 7/8" diam. x 1 5/8" keyed shaft or 7/8"-13 tooth splined shaft. Side Ports. Two bolt SAE B mounting flange with 4" pilot diam.



ITEM	Displ.	GPM at 2000 RPM	Rotation	Shaft	Max Pressure	Max. RPM	Inlet Port	Outlet Port	Shpg.	Price
9-7125-A	1.141	9.39	CW	7/8-13 Tooth Splined	3000	3000	SAE 16	SAE 12	12 lbs.	\$393.55
9-7126-B	1.349	11.08	CW	7/8" Keyed	3000	3000	SAE 16	SAE 12	12 lbs.	\$425.10
9-7127-B	1.66	13.7	CW	7/8" Keyed	3000	3000	SAE 16	SAE 12	13 lbs.	\$256.90
9-7128-A	2.008	16.73	CW	7/8-13 Tooth Splined	3000	3000	SAE 20	SAE 16	15 lbs.	\$253.00
9-7128-B	2.008	16.73	CW	7/8" Keyed	3000	3000	SAE 20	SAE 16	15 lbs.	\$253.00
9-7129-A	2.318	19.08	CW	7/8-13 Tooth Splined	3000	3000	SAE 20	SAE 16	16 lbs.	\$272.35
9-7129-B	2.318	19.08	CW	7/8" Keyed	3000	3000	SAE 20	SAE 16	16 lbs.	\$279.55
9-7129-C	2.318	19.08	CCW	7/8-13 Tooth Splined	3000	3000	SAE 20	SAE 16	16 lbs.	\$378.50
9-7129-D	2.318	19.08	CCW	7/8" Keyed	3000	3000	SAE 20	SAE 16	16 lbs.	\$403.20
9-7130-A	2.697	22.16	CW	7/8-13 Tooth Splined	3000	3000	SAE 20	SAE 16	16 lbs.	\$406.15
9-7130-B	2.697	22.16	CW	7/8" Keyed	3000	3000	SAE 20	SAE 16	16 lbs.	\$415.95
9-7131-B	3.179	26.42	CW	7/8" Keyed	2500	3000	SAE 20	SAE 16	17 lbs.	\$425.10
9-7132-A	3.869	31.93	CW	7/8-13 Tooth Splined	2500	3000	SAE 24	SAE 16	18 lbs.	\$394.00
9-7132-B	3.869	31.93	CW	7/8" Keyed	2500	3000	SAE 24	SAE 16	18 lbs.	\$394.00
9-7132-C	3.869	31.93	CCW	7/8-13 Tooth Splined	2500	3000	SAE 24	SAE 16	18 lbs.	\$403.75
9-7132-D	3.869	31.93	CCW	7/8" Keyed	2500	3000	SAE 24	SAE 16	18 lbs.	\$412.90