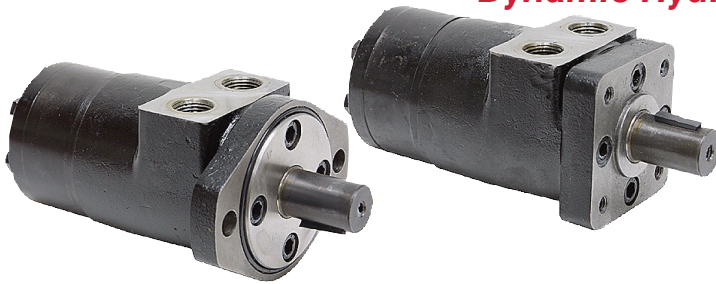


## Dynamic Hydraulic Motors

**DYNAMIC**  
 FLUID COMPONENTS, INC.
**BMPH Series**

- Brand new DYNAMIC BMPH series hydraulic motors. Gerotor power element. Interchangeable with the following motor lines: Char-Lynn H, Danfoss DH, White RS, Parker/Ross MG/TB.

**SPECIFICATIONS FOR BMPH SERIES**

- Reversible rotation
- Shaft 1" x 1.57" diam. ¼" woodruff key
- Ports ½" NPT
- SAE 4 case drain

2 Bolt ITEM	4 Bolt ITEM	Displ.	PSI		Torque in. lbs.		RPM		GPM		Size	Shpg.	Price
			Cont.	Int.	Cont.	Int.	Cont.	Int.	Cont.	Int.			
9-7077-36	9-7076-36	2.2	1813	2393	487	673	1500	1650	14.5	15.8	5½" x 3¼" x 3¼"	15 lbs.	<b>\$142.75</b>
9-7077-50	9-7076-50	3.15	2031	2538	885	1133	1150	1450	15.8	19.8	5½" x 3¼" x 3¼"	16 lbs.	<b>\$148.10</b>
9-7077-80	9-7076-80	4.74	2031	2538	1292	1646	770	960	15.8	19.8	5½" x 3¼" x 3¼"	17 lbs.	<b>\$151.45</b>
9-7077-100	9-7076-100	5.87	2031	2538	1611	2009	615	770	15.8	19.8	5¾" x 3¼" x 3¼"	17 lbs.	<b>\$152.70</b>
9-7077-125	9-7076-125	7.20	2031	2538	2089	2567	490	615	15.8	19.8	5½" x 3¼" x 3¼"	17 lbs.	<b>\$158.60</b>
9-7077-160	9-7076-160	9.51	2031	2538	2673	3275	383	475	15.8	19.8	6½" x 3¼" x 3¼"	18 lbs.	<b>\$163.60</b>
9-7077-200	9-7076-200	11.59	2031	2538	3186	3894	310	385	15.8	19.8	6½" x 3¼" x 3¼"	18 lbs.	<b>\$169.05</b>
9-7077-250	9-7076-250	14.09	2031	2538	3363	4071	250	310	15.8	19.8	6½" x 3¼" x 3¼"	19 lbs.	<b>\$174.10</b>
9-7077-315	9-7076-315	19.03	1813	2031	3319	4912	192	250	15.8	19.8	7¾" x 3¼" x 3¼"	19 lbs.	<b>\$177.85</b>
9-7077-400	9-7076-400	23.61	1450	1813	3186	4646	155	190	15.8	19.8	7¾" x 3¼" x 3¼"	20 lbs.	<b>\$182.90</b>

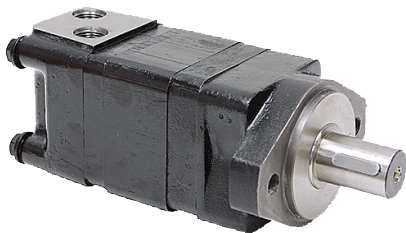
**BMRS Series**
**DYNAMIC**  
 FLUID COMPONENTS, INC.

- Brand new DYNAMIC BMRS series hydraulic motors. Gerotor power element. Interchangeable with the following motor lines: Char-Lynn S, Danfoss DS, White RS, Parker/Ross MG/TB.

**SPECIFICATIONS FOR BMRS SERIES**

- Reversible rotation
- Shaft 1" x 1.57" diam. ¼" woodruff key
- Ports SAE 10
- SAE 4 case drain

2 Bolt ITEM	4 Bolt ITEM	Displ.	PSI		Torque in. lbs.		RPM		GPM		Size	Shpg.	Price
			Cont.	Int.	Cont.	Int.	Cont.	Int.	Cont.	Int.			
9-7079-50	9-7078-50	3.15	2031	2538	885	1115	960	1150	13.2	15.8	5½" x 3¼" x 3¾"	18 lbs.	<b>\$182.90</b>
9-7079-80	9-7078-80	4.97	2321	2900	1725	1947	750	940	15.8	19.8	5½" x 3¼" x 3¾"	19 lbs.	<b>\$190.05</b>
9-7079-100	9-7078-100	6.22	2321	2900	2124	2478	600	750	15.8	19.8	6½" x 3¼" x 3¾"	19 lbs.	<b>\$193.40</b>
9-7079-125	9-7078-125	7.76	2321	2900	2655	3009	475	600	15.8	19.8	6¼" x 3¼" x 3¾"	19 lbs.	<b>\$197.15</b>
9-7079-160	9-7078-160	9.59	2321	2900	3186	3805	378	475	18.8	19.8	6½" x 3¼" x 3¾"	20 lbs.	<b>\$202.60</b>
9-7079-200	9-7078-200	11.87	2321	2900	3186	3894	310	385	15.8	19.8	6¾" x 3¼" x 3¾"	21 lbs.	<b>\$209.75</b>
9-7079-250	9-7078-250	15.46	2321	2900	3451	4336	240	300	15.8	19.8	7¼" x 3¼" x 3¾"	22 lbs.	<b>\$216.50</b>
9-7079-315	9-7078-315	19.36	2031	2538	3451	4735	190	240	15.8	19.8	7¾" x 3¼" x 3¾"	23 lbs.	<b>\$220.25</b>
9-7079-375	9-7078-375	23.27	1450	2031	3230	4381	155	190	15.8	19.8	8¾" x 3¼" x 3¾"	24 lbs.	<b>\$229.05</b>

**BMSY Series**
**DYNAMIC**  
 FLUID COMPONENTS, INC.

- Brand new DYNAMIC BMSY series hydraulic motors. Gerotor power element. Tapered roller bearings on output shaft for high axial and radial load capacity. Interchangeable with the following motor lines: Char-Lynn 2000, Danfoss OMS/OMSS, White RE/DH, Parker/Ross MB/TF.

**SPECIFICATIONS FOR BMS SERIES**

- Reversible rotation
- Mount 2 bolt SAE A
- Woodruff keyed shafts in sizes shown
- Ports SAE 10
- SAE 4 case drain

1" x 1.64" Shaft ITEM	1¼" x 1.89" Shaft ITEM	Displ.	PSI		Torque in. lbs.		RPM		GPM		Size	Shpg.	Price
			Cont.	Int.	Cont.	Int.	Cont.	Int.	Cont.	Int.			
9-7080-80	9-7081-80	4.92	2973	3265	1991	2212	800	988	17.1	21.1	6½" x 5½" x 4¼"	26 lbs.	<b>\$285.30</b>
9-7080-100	9-7081-100	6.15	2973	3265	2566	2832	748	900	19.8	23.7	6¾" x 5½" x 4¼"	26 lbs.	<b>\$289.45</b>
9-7080-125	9-7081-125	7.63	2973	3265	3230	3240	600	720	19.8	23.7	7" x 5½" x 4¼"	27 lbs.	<b>\$292.40</b>
9-7080-160	9-7081-160	9.39	3045	3262	4292	4778	470	560	19.8	23.7	7¼" x 5½" x 4¼"	28 lbs.	<b>\$295.35</b>
9-7080-200	9-7081-200	11.8	3045	3265	5185	5707	375	450	19.8	23.7	7¾" x 5½" x 4¼"	29 lbs.	<b>\$298.25</b>
9-7080-250	9-7081-250	14.8	2900	3265	6265	7142	300	360	19.8	23.7	8" x 5½" x 4¼"	31 lbs.	<b>\$310.45</b>
9-7080-315	9-7081-315	18.9	2900	3265	7787	8495	240	280	19.8	23.7	8½" x 5½" x 4¼"	31 lbs.	<b>\$335.20</b>
9-7080-375	9-7081-375	24.0	2320	2563	7786	8495	185	225	19.8	23.7	8½" x 5½" x 4¼"	32 lbs.	<b>\$359.55</b>
9-7080-475	9-7081-475	28.9	2030	2175	8053	8495	155	185	19.8	23.7	9¾" x 5½" x 4¼"	34 lbs.	<b>\$359.55</b>