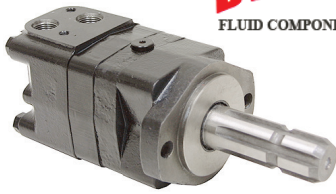




### PTO Drive Motors



- Brand new, hydraulic motor with agricultural standard 6 tooth splined shaft. Gerolor power element. Tapered roller bearings on output shaft for high axial and radial load capacity. Shaft has retention groove centered 1 1/2" from shaft end.
- Interchangeable with the following motor lines: Char-Lynn 2000, Danfoss OMS/OMSS, White RE/DH, Parker-Ross MB/TF.

**SPECIFICATIONS FOR ALL**

- Rotation reversible
- Case drain SAE 4
- Ports SAE 10
- Shaft 1 3/8" x 4" 6T spline
- Mount 2 bolt SAE A
- Size 7 3/8" x 5 3/16" x 4 1/16"

ITEM	Displ. cu. in.	PSI		Torque in. lbs.		RPM		GPM		HP		Shpg.	Price
		Cont.	Int.	Cont.	Int.	Cont.	Int.	Cont.	Int.	Cont.	Int.		
9-7368-80	4.95	2576	3091	1682	2124	800	990	17.1	21	21.3	26.9	26 lbs.	\$284.55
9-7368-100	6.15	2576	3091	2124	2655	748	900	19.7	23.6	25.2	31.5	27 lbs.	\$304.60
9-7368-125	7.63	2576	3091	2744	3275	600	720	19.7	23.6	26.1	31.1	28 lbs.	\$307.35
9-7368-160	9.59	2208	3091	2780	3805	470	560	19.7	23.6	20.9	28.4	29 lbs.	\$310.10



### Heavy Duty Hydraulic Motors

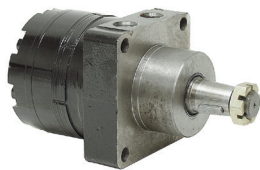
- Brand new, DYNAMIC BMK6 heavy duty hydraulic motors. Interchangeable with Char-Lynn 6000 series motors.

**SPECIFICATIONS**

- Rotation reversible
- Mount SAE C 4 bolt, 6 3/8" bolt circle, 5" pilot dia.
- Shaft 1 1/2" dia. x 3.01" shaft with 3/8" key, tapped 3/8-16
- Ports SAE 16



ITEM	Displ.	PSI		Torque in. lbs.		RPM		GPM		Size	Shpg.	Price
		Cont.	Int.	Cont.	Int.	Cont.	Int.	Cont.	Int.			
9-8665-200	11.93	2900	4350	5000	7434	765	865	39.6	44.9	10.43" x 5.75" x 5.75"	61 lbs.	\$538.10
9-8665-250	15.01	2900	4350	6284	9558	610	830	39.6	54.1	10.67" x 5.75" x 5.75"	62 lbs.	\$547.20
9-8665-315	19.01	2900	4350	8142	11727	480	690	39.6	59.4	10.94" x 5.75" x 5.75"	64 lbs.	\$556.30
9-8665-400	23.87	2900	4350	10266	14382	382	570	39.6	59.4	11.30" x 5.75" x 5.75"	65 lbs.	\$566.60
9-8665-500	29.95	2900	3985	12789	16639	304	455	39.6	59.4	11.73" x 5.75" x 5.75"	68 lbs.	\$605.55
9-8665-630	38.01	2535	3260	13099	13726	240	360	39.6	59.4	12.32" x 5.75" x 5.75"	71 lbs.	\$618.25
9-8665-800	48.96	2030	2245	13984	16639	186	280	39.6	59.4	13.11" x 5.75" x 5.75"	75 lbs.	\$630.65
9-8665-1000	59.9	2030	2030	14824	16462	152	230	39.6	59.4	13.89" x 5.75" x 5.75"	79 lbs.	\$648.90



### Hydraulic Wheel Motors

- Brand new, DYNAMIC BMER-2 series wheel mount hydraulic motors. Interchangeable with PARKER and WHITE motors.

**SPECIFICATIONS**

- Rotation reversible
- Mount 4 bolt wheel 5.812 bolt circle, 3/4" pilot dia.
- Shaft 1 1/4" tapered x 4.21" shaft w/5/16" key and threaded end
- Ports SAE 10



ITEM	Displ. cu. in.	PSI		Torque in. lbs.		RPM		GPM		Size	Shpg.	Price
		Cont.	Int.	Cont.	Int.	Cont.	Int.	Cont.	Int.			
9-8592-125	7.2	2970	3480	2876	3363	360	490	14.0	15.8	4.68" x 5.24" x 5.43"	29 lbs.	\$260.85
9-8592-160	9.52	2970	3480	3983	4646	375	470	15.8	19.8	4.80" x 5.24" x 5.43"	30 lbs.	\$277.25
9-8592-200	11.96	2970	3480	4691	5310	330	425	17.9	22.4	4.94" x 5.24" x 5.43"	31 lbs.	\$292.75
9-8592-230	13.91	2970	3480	5531	6284	290	365	17.9	22.4	5.04" x 5.24" x 5.43"	31 lbs.	\$310.10
9-8592-250	15.68	2970	3480	6195	6992	290	350	19.8	23.7	5.14" x 5.24" x 5.43"	32 lbs.	\$324.65
9-8592-300	18.08	2970	3480	7169	8231	250	315	19.8	25	5.30" x 5.24" x 5.43"	32 lbs.	\$359.35
9-8592-350	21.05	2970	3480	8009	9160	220	270	19.8	25.0	5.43" x 5.24" x 5.43"	33 lbs.	\$363.00
9-8592-375	22.63	2970	3480	8762	10089	200	240	19.8	23.7	5.53" x 5.24" x 5.43"	34 lbs.	\$373.90
9-8592-475	28.18	2535	2973	9602	10443	160	195	19.8	23.7	5.83" x 5.24" x 5.43"	35 lbs.	\$390.35
9-8592-540	32.94	2030	2535	8673	10974	140	170	19.8	23.7	6.14" x 5.24" x 5.43"	36 lbs.	\$406.75
9-8592-750	45.45	1520	1740	9293	10443	100	120	19.8	23.7	6.93" x 5.24" x 5.43"	40 lbs.	\$425.00

### 4 Bolt Wheel Hub

ITEM 1-3161

**\$14.95**

- New, machined casting wheel hubs with brake drum. Ideal for mounting wheels onto hydraulic motors with 1 1/4" tapered shaft.

**SPECIFICATIONS**

- Wheel studs 4 1/2-20 thread
- Bolt circle 4"
- Hub 1 1/4" tapered w/keyway
- Brake drum dia. 6"
- Size 6 1/2" dia. x 1 3/4"
- Shpg. 6 lbs.



### 5 Bolt Wheel Hub

ITEM 1-3364

**\$14.95**

- New, machined steel casting five bolt wheel hub with brake drum. Ideal for mounting wheels onto hydraulic motors.

**SPECIFICATIONS**

- Wheel studs 5
- Wheel stud 1/2-20 thread
- Bolt circle 4 1/2"
- Hub 1 1/4" tapered w/keyway
- Keyway size 5/16"
- Bore taper 1 1/2" per foot
- Thru-hub lgth. 1 29/64"
- Brake drum dia. 6.299"
- Size 7 3/8" dia. x 2 7/16"
- Shpg. 10 lbs.



### 5 Bolt Wheel Hub

ITEM 1-1726

**\$47.20**

- Brand new. 1 1/4" ID tapered cast iron hub for use with drive wheel applications. Drilled/tapped 1/2-20 flange for wheel studs.

**SPECIFICATIONS**

- 5 bolt on 4 1/2" bolt circle
- 1 1/4" ID hub tapered 1 1/2" ft.
- 1/2-20 drilled/tapped flange
- 2 1/2" diam. wheel pilot
- Size 5 3/8" dia. x 1 1/2" thick
- Shpg. 6 lbs.

