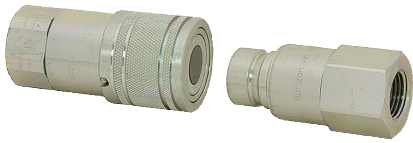


Flush Face ISO 16028 Quick Coupler & Accessories

• Brand new, HORIZON KSP1 Series flush face quick coupler. Includes body and tip. Used on skid-steer loaders, construction and agricultural equipment. Plated steel construction. Interchangeable with other brands that conform to ISO 16028.



SPECIFICATIONS FOR BOTH SIZES

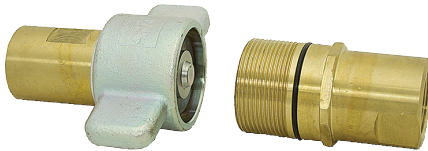
- ISO Standard 16028 • Temp. range -25° C to 125° C
- Pressure: Working 3000 PSI max., Burst 12000 PSI



ITEM	Coupler					Dust Cap		Dust Plug	
	Body Size	Ports	GPM	Shpg.	Price	ITEM	Price	ITEM	Price
9-8288	1/2"	1/2" NPT	11.9	3 lbs.	\$38.95	9-8288-C	\$2.00	9-8288-P	\$2.05
9-8313	3/4"	3/4" NPT	26.4	4 lbs.	\$63.95	9-8313-C	\$2.30	9-8313-P	\$2.25
9-8720	1"	1" NPT	49.9	6 lbs.	\$89.95	9-8720-C	\$2.30	9-8720-P	\$2.25

1" NPT Thread-To-Connect Coupling & Accessories

• Brand new, HORIZON KST Series thread-to-connect coupling. Includes body and tip. Thread-to-connect design can be connected under pressure, with little or no spillage. Interchangeable half-for-half with the following: Parker 6100, Perfecting W, Faster FB, Safeway S51, Snaptite 78, Tomco A51 And Aeroquip 5100.



SPECIFICATIONS FOR COUPLER

- Width across "wings" 4 1/2"
- Coupled length 6 1/2"
- Pressure: working 3000 PSI max., burst 9000 PSI



ITEM	Coupler					Dust Cap		Dust Plug	
	Body Size	Ports	GPM	Shpg.	Price	ITEM	Price	ITEM	Price
9-8314	1"	1" NPT	42.2	5 lbs.	\$64.95	9-8314-C	\$12.95	9-8314-P	\$11.95

Reusable Split Flange Fittings

Split Flange Coupling

ITEM 9-4806-A

\$2.95

• New. 90° reusable fitting for 1" hose size. 1 3/4" dia. flange head. For 4 bolt 1" flange size. Shpg. 2 lbs.



ITEM 9-4808

\$2.95

• Same as ITEM 9-4806-A above except 45°. Shpg. 4 lbs.



1" Split Flange Ring Kit

ITEM 9-4814

\$7.50

• New. Split ring kit for 1" four bolt flange size. Includes split rings, bolts, lockwashers and O-ring. Shpg. 1 lb.



4-Bolt Flange Kits

• New. Flange pad kit adapts SAE code 62 four-bolt flange to female NPT. Includes mounting bolts, spring-lock washers and O-ring.

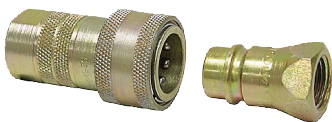
ITEM		Shpg.	Price
9-8603-16	1" Flange to 1" NPT	3.5 lbs.	\$22.95
9-8603-20	1.25" Flange to 1.25" NPT	4 lbs.	\$22.95
9-8603-24	1.5" Flange to 1.5" NPT	6 lbs.	\$29.95
9-8603-32	2" Flange to 2" NPT	9 lbs.	\$38.95

Flange Pad Kits

• Brand new. Use to change code 61 ports to NPT. Supplied with cap screws, O-ring and adapter.



ITEM		Shpg.	Price
9-1714	3/4" Flange to 3/4" NPT	2 lbs.	\$14.35
9-1715	1" Flange to 1" NPT	3 lbs.	\$15.40
9-1716	1 1/4" Flange to 1 1/4" NPT	4 lbs.	\$19.05
9-1717	1 1/2" Flange to 1 1/2" NPT	5 lbs.	\$25.75
9-1718	2" Flange to 2" NPT	6 lbs.	\$32.10
9-1757	2 1/2" Flange to 2 1/2" NPT	8 lbs.	\$59.00



Hydraulic Quick Couplers and Tips

• Brand new SAFEWAY. Two piece couplers. ITEM 9-6314, 9-6352 and 928-C are two way sleeve type. Can be disconnected by pulling sleeve either direction. Ball check design prevents leakage when disconnected.



Thread	Complete Coupler							Extra Tip			
	ITEM	Flow	PSI	Model	Type	Shpg	Price	ITEM	Model	Shpg.	Price
1/4" NPT	9-1626	3	5000	S10-2	Poppet	1 lb.	\$21.25	9-1626-A	S101-2	1/2 lb.	\$5.65
1/4" NPT	9-6314	3	3000	S40-2	Ball	1 lb.	\$18.95	9-5924	S41-2	1/2 lb.	\$4.75
3/8" NPT	9-6347	6	3000	S20-3	Ball	1 lb.	\$19.00	9-6347-A	S41-3	1/2 lb.	\$5.95
1/2" NPT	928	12	3000	S20-4	Ball	1 1/2 lbs.	\$19.95	928-AA	S71-4	1/2 lb.	\$5.70
3/4" NPT	928-C	12	3000	S40-6	Ball	1 1/2 lbs.	\$28.15	928-D	S71-6	1 lb.	\$9.25