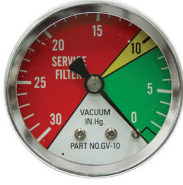


**Optional
1/8" NPT Condition
Indicator Gauge**



**ITEM 9-4544-G
\$9.70**

• For use on ITEMS 9-077, 9-7295, 9-4544 suction line filters only. **Shpg.** 1/2 lb.

Zinga Spin-On Filter Assemblies

• Brand new, ZINGA spin-on type element. Full flow filtering up to bypass cracking point, partial filtering beyond. 250° F max. Suction line filters have 1/8" NPT port for optional condition indicator.



		Filter Assemblies (Head and Element)								Replacement Elements	
Ports	ITEM	Application	GPM	Max. Bypass Micron			Size	Shpg.	Price	ITEM	Price
				PSI	PSI	Rating					
3/4" NPT	9-059	Return Line	20	100	25	10	7 1/2" x 3 3/4" x 3 1/2"	3 lbs.	\$16.95	9-059-10	\$7.70
	9-077	Suction Line	9	100	5	25	7 1/2" x 3 3/4" x 3 1/2"	3 lbs.	\$17.95	9-059-25	\$7.70
1 1/4" NPT	9-4543	Return Line	70	200	25	10	5 5/8" diam. x 9 5/8"	6 lbs.	\$29.95	9-4543-10	\$16.95
	9-4544	Suction Line	25	200	5	25	5 5/8" diam. x 9 5/8"	6 lbs.	\$29.95	9-4543-25	\$16.95
1 1/2" NPT	9-7294	Return Line	70	200	25	10	5 1/8" diam. x 13 7/8"	6 lbs.	\$43.95	9-7294-10	\$18.70
	9-7295	Suction Line	25	200	5	25	5 1/8" diam. x 13 7/8"	6 lbs.	\$43.95	9-7294-25	\$18.70

**1 Quart
Hydrostatic
Tank
w/Filter**



ITEM 9-8944

\$69.99

• New, extruded aluminum with deep fins for cooling. Use as expansion tank/cooler on dual hydrostatic pump mowers. Connects to case drain and charge pump ports on hydrostatic pumps. Fill port on top. Internal markings for hot and cold oil levels. Furnished with 90 degree adapters to 3/8" ID Push-Lok hose.

SPECIFICATIONS

- Oil Capacity 1 quart
- Filter Rating 10 micron
- Ports (4) SAE 6
- Size 5" x 5" x 12 1/2"
- **Shpg.** 8 lbs.

**3/8" NPT Zinga
Return
Inline Filter**



**ITEM 9-7291
\$12.95**

• Brand new, ZINGA.

SPECIFICATIONS

- 10 micron return line application
- 7 GPM return line
- 200 PSI max.
- Ports 3/8" NPT
- 250° F max.
- Built-in 18 PSI by-pass
- Size 3 1/8" diam. x 4 1/2"
- **Shpg.** 1 1/2 lbs.

Replacement Filter Element

ITEM 9-7291-10-18 10 micron **\$7.40**

**7 GPM Return
Line Filter**



**ITEM 9-8995
\$8.95**

• New, FILTRATION PRODUCTS hydraulic filter with FPE-15-10N-BLA spin on element. No bypass.

SPECIFICATIONS

- Application Return Line
- Ports 3/8" NPT
- Flow Rate 7 GPM max.
- Filtration 10 Micron
- Size 3 1/8" dia. x 4 5/8" long
- **Shpg.** 1 1/2 lbs.

**High Pressure Inline
Filter**



**ITEM 9-7292
\$205.90**

• Brand new, ZINGA series HP3000 high pressure inline filter. Ductile iron housing. Buna-N Seals. Visual differential pressure indicator.

SPECIFICATIONS

- 10 micron filter
- 60 GPM
- SAE 12 ports
- 3000 PSI max.
- By-pass valve setting 50 PSI
- Size 3" diam. x 9 3/4"
- **Shpg.** 11 lbs.

Replacement Filter Element

ITEM 9-7292-10 10 micron **\$15.00**

**Inline High
Press. Filter**



**ITEM 9-7297
\$84.95**

• Brand new, ZINGA Series CF-90 high pressure filter. Designed for use as final filter to protect control valves, not as total system filter.

SPECIFICATIONS

- 12 GPM
- 10 micron
- SAE 8 ports
- 3000 PSI max.
- By-pass valve setting 50 PSI
- Size 5" x 2 1/2" x 2"
- **Shpg.** 3 lbs.

Replacement Filter Element

ITEM 9-7297-10 10 micron **\$34.75**

**Replacement
Filter
Element**



ITEM 9-10836

\$3.99

• New old stock, GRESEN K23005 filter element part number 3293-001, fits FR250, F200 and F400 filters.

SPECIFICATIONS

- 10 micron paper element
- Size 4 1/2" dia. x 7"
- **Shpg.** 1 lbs.

**High Pressure
Inline
Filter**



**ITEM 9-7293
\$211.50**

• Brand new, ZINGA Series P3000 high pressure inline filter. Ideal for external charge pump filtration and high shock return line filtration. Buna-N Seals. Visual differential pressure indicator.

SPECIFICATIONS

- 10 micron filter
- 30 GPM
- SAE 12 ports
- 3000 PSI max.
- Operating temp. -40° to 250° F
- By-pass valve setting 50 PSI
- Size 4" diam. x 13 1/2"
- **Shpg.** 6 lbs.

Replacement Filter Element

ITEM 9-7293-10L 10 micron **\$33.75**

**1 1/4" NPT Tank Sump
Strainer**



ITEM 9-8787

\$17.95

• New LENZ 49-20-R3-100 strainer that mounts in hydraulic reservoir to prevent debris from being drawn into pump.

SPECIFICATIONS

- Port 1 1/4" NPT
- Flow Capacity 20 GPM
- Relief Setting 3 PSI
- Mesh Size 100
- Mesh Dimensions 3 3/8" diam. x 5 1/2"
- Overall Size 3 3/8" x 6 7/8"
- **Shpg.** 3 lbs.

Plastic Seal Pick Tool

**ITEM 9-8099
\$1.95**



• Brand new, plastic pick tool for removing O-rings and seals to prevent damage to delicate machined surfaces. 5 1/2" overall length. **Shpg.** 1/10 lb.