

Metal Housing Pressure Switches



\$29.00 each

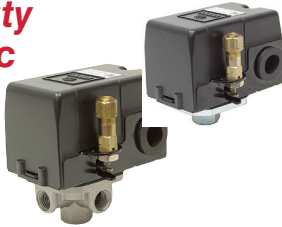
• Brand new, LEFOO automatic pressure switch for compressed air systems. Automatically turns electric motor ON or OFF at set values. Adjustable differential. Unloader port 1/4" OD copper tubing which allows compressor to start without back pressure load. Sturdy metal housing. Single port.

SPECIFICATIONS FOR BOTH

- Contact rating
- Min. ON (cut-in) 40 PSI
- 2 HP, 24 amps at 120 VAC
- Differential 25-60 PSI
- 3 HP, 20 amps at 240 VAC
- Size 3 3/4" x 3 1/2" x 4 1/4"
- Port 1/4" NPT
- Shpg. 3 lbs.

ITEM	Factory Setting		Max. OFF (cut-out)
	ON (cut-in)	OFF (cut-out)	
4-1820-H1	145 PSI	175 PSI	250 PSI
4-1820-L1	105 PSI	135 PSI	200 PSI

Heavy Duty Automatic Pressure Switches



• Brand new, SUNNY automatic pressure switch for compressed air systems. Automatically turns electric motor ON or OFF at set values. Adjustable differential. Unloader port 1/4" OD copper tubing which allows compressor to start without back pressure load. Sturdy plastic housing. Manual off switch.

SPECIFICATIONS

- Contact ratings
- Port(s) 1/4" NPT
- 25 amps at 120/240 VAC
- Size 3 3/4" x 3" x 3 1/8"
- 25 amps at 32/120/230 VDC
- Shpg. 1 1/2 lbs.

ITEM	Port(s)	Factory Setting		Price
		ON (Cut-In)	OFF (Cut-Out)	
4-1823-L1	1	95 PSI	125 PSI	\$14.50
4-1823-H1	1	140 PSI	175 PSI	\$14.50
4-1823-L4	4	95 PSI	125 PSI	\$14.60
4-1823-H4	4	140 PSI	175 PSI	\$14.60

Air Pressure Switch w/Unloader & Override



ITEM 4-1797
\$8.99

• New HUBBELL ICD Model A12491 air pressure switch. Has unloader connection to allow motor to start without load. Manual lever has automatic and off positions. Bottom mounting manifold has 4 ports for connecting to tank, relief valve, gauge and hose. Open design requires a protective cover for safety (not included).

SPECIFICATIONS

- Manifold block ports four 1/4" NPT
- Unloader connection 1/4" OD tubing
- Size 3 1/2" x 3 3/4" x 3 1/2"
- Amp rating 24 amps at 120 VAC
- Preset (fixed) On 160 PSI, Off 200 PSI
- Contacts 1 pole
- Shpg. 2 lbs.

Automatic Pressure Switches

\$9.95 each

• Brand new, LEFOO automatic pressure switch for compressed air systems. Automatically turns electric motor ON or OFF at set values. Adjustable differential. Unloader port 1/4" OD copper tubing which allows compressor to start without back pressure load. Sturdy plastic housing. Manual OFF switch.

SPECIFICATIONS

- Contact ratings
- 120 VAC: 1 1/2 HP at 20 amps
- 240 VAC: 2 HP at 12 amps
- 240 VAC 3 Ph.: 3 HP at 9.6 amps
- Size 3 3/4" x 3 3/8" x 3 1/4"
- 32 VDC: 1/4 HP at 8.6 amps
- 120 VDC: 1/4 HP at 3.1 amps
- 240 VDC: 1/4 HP at 1.6 amps
- Shpg. 1 1/2 lbs.



ITEM	Factory Setting		Min. On (Cut-In)	Max. OFF (Cut-Out)	Differential	Ports
	ON (Cut-In)	OFF (Cut-Out)				
4-1819-L1	95 PSI	125 PSI	35 PSI	150 PSI	30-40 PSI	1/4" NPT (x1)
4-1819-L4	95 PSI	125 PSI	35 PSI	150 PSI	30-40 PSI	1/4" NPT (x4)
4-1819-H1	140 PSI	175 PSI	50 PSI	175 PSI	35-55 PSI	1/4" NPT (x1)
4-1819-H4	140 PSI	175 PSI	50 PSI	175 PSI	35-55 PSI	1/4" NPT (x4)



ITEM 11-3044-E ITEM 11-3042 ITEM 11-2576

ITEM	HP	Voltage	Pressure (PSI)		Port	Size	Shpg	Price
			ON	OFF				
11-3044-E	1	115/230	20	40	1/4" Hosebarb	4" x 2 3/4" x 3 1/2"	2 lbs.	\$11.95
11-2576	1 1/2	115	20	40	1/4" NPT	3 1/2" x 2 1/4" x 3"	1 1/2 lbs.	\$12.99

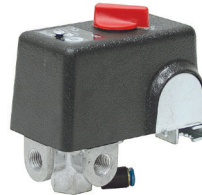
Automatic Pressure Switch

ITEM 4-9063
\$9.95

• New, CONDOR Model MDR11/11EA automatic pressure switch for compressed air systems. Automatically turns electric motor ON or OFF at set values. Unloader port allows compressor to start without back pressure load. Plastic housing. Rotary switch for Auto/Off. Integral strain relief for wires.

SPECIFICATIONS

- Contact rating 26 amps at 120/240 VAC
- Factory setting ON (Cut-In) 105 PSI, OFF (Cut-Out) 135 PSI
- Ports four 1/4" NPT
- Unloader port 1/4" OD plastic tubing
- Terminals screws with 1/4" spade adapters
- Size 4 1/4" x 2 5/8" x 4 1/4"
- Shpg. 1 1/2 lbs.



SPDT Pneumatic Relay

ITEM 4-1897
\$15.99

• New, ROBERTSHAW model R471-1 pneumatic relay. Sensitive to low pressure changes. Easy rotary adjustment to pressure setting.

SPECIFICATIONS

- Contacts SPDT
- 120/240/480 VAC
- Current 20 amps
- Pressure Range 3-25 PSI
- Differential 2 PSI fixed
- Connection 1/4" plastic tubing nipple
- Size 2 1/2" x 2 3/4" x 3 7/8"
- Shpg. 1 1/2 lbs.



Air Pressure Switch w/Unloader & Override

ITEM 4-1797
\$8.99

• New HUBBELL ICD Model A12491 air pressure switch. Has unloader connection to allow motor to start without load. Manual lever has automatic and off positions. Bottom mounting manifold has 4 ports for connecting to tank, relief valve, gauge and hose. Open design requires a protective cover for safety (not included).

SPECIFICATIONS

- Manifold block ports four 1/4" NPT
- Unloader connection 1/4" OD tubing
- Size 3 1/2" x 3 3/4" x 3 1/2"
- Amp rating 24 amps at 120 VAC
- Preset (fixed) On 160 PSI, Off 200 PSI
- Contacts 1 pole
- Shpg. 2 lbs.

Portable Air Carry Tanks

• Brand New IRON HORSE portable air carry tanks. Ideal for filling tires, blowing off equipment and other inflation needs when a compressor isn't handy. Features include heavy gauge steel construction, shut-off valve, filling valve, pressure gauge, 3 foot hose, tire chuck and built-in carry handle. Pressure 150 PSI max.

ITEM 4-1890-5
\$33.75

SPECIFICATIONS

- Capacity 5 gallon
- Size 17 1/2" x 9 3/4" x 11 1/2"
- Shpg. 20 lbs.

10 Gal. Tank



5 Gal. Tank

ITEM 4-1890-10
\$54.00

SPECIFICATIONS

- Size 22 1/2" x 12" x 14"



- Capacity 10 gallon
- Shpg. 34 lbs.

Pen Air Cylinders

• New, HUMPHREY. Pen style air cylinders. Aluminum construction, 100 PSI working pressure. All have 10-32 ports. Shpg. 1/4 lb.

Bore - Rod Dimensions

1/4" = 0.118" 3/8" = 0.156" 5/8" = 0.197"

Double Acting - Nose Mount

ITEM	Bore	Stroke	R. Lgth.	Price
4-14392	1/4"	3/8"	3.125"	\$5.95
4-13281	3/8"	3/8"	3.6875"	\$6.95
4-14652	5/8"	1/4"	3.25"	\$6.95
4-14765	5/8"	1/4"	3.375"	\$6.95
4-13935	5/8"	1/4"	3.625"	\$6.95
4-14648	5/8"	1/4"	3.75"	\$6.95

Air Muffler/Filter

ITEM 4-1749
79¢

• New, NUMATICS sintered bronze muffler/filter. 1/8" NPT male. Size 1 9/32" O.D. x 3/4" long. Shpg. 1/10 lb.

