

Pillow Block Bearings

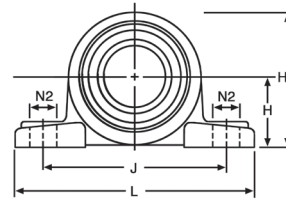
• Brand new 200 series normal duty pillow block bearings. Cast iron construction with self-aligning ball bearing insert and grease zerk.



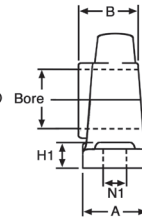
UCP Series



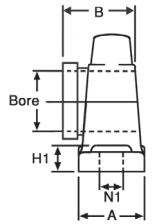
HCP Series



Front View  
Both Series



Side  
UCP



Side  
HCP

Bore	UCP Series Two Set Screws, No Lock Collar		HCP Series Eccentric Locking Collar w/Set Screws		Shpg.	Dimensions										
	ITEM	Price	ITEM	Price		A	B	B	H	H1	H0	J	L	Bolt	N1	N2
1/2"	1-201-08-P	\$ 9.30	1-201-08-P-C	\$10.60	3	1.457	1.221	1.713	1.311	0.551	2.512	3.780	5.000	3/8	0.512	0.630
5/8"	1-202-10-P	\$ 9.30	1-202-10-P-C	\$10.60	3	1.457	1.221	1.713	1.311	0.551	2.512	3.780	5.000	3/8	0.512	0.630
3/4"	1-204-12-P	\$ 9.20	1-204-12-P-C	\$10.60	3	1.457	1.221	1.713	1.311	0.551	2.512	3.780	5.000	3/8	0.512	0.630
7/8"	1-205-14-P	\$10.20	1-205-14-P-C	\$10.95	3	1.496	1.339	1.744	1.437	0.591	2.736	4.134	5.512	3/8	0.512	0.748
1 1/16"	1-205-15-P	\$12.25	1-205-15-P-C	\$13.15	3	1.496	1.339	1.744	1.437	0.591	2.736	4.134	5.512	3/8	0.512	0.748
1"	1-205-16-P	\$10.20	1-205-16-P-C	\$10.95	3	1.496	1.339	1.744	1.437	0.591	2.736	4.134	5.512	3/8	0.512	0.748
1 1/8"	1-206-18-P	\$13.45	1-206-18-P-C	\$15.60	4	1.732	1.500	1.902	1.689	0.630	3.228	4.764	6.500	1/2	0.669	0.826
1 3/16"	1-206-19-P	\$13.45	1-206-19-P-C	\$15.60	4	1.732	1.500	1.902	1.689	0.630	3.228	4.764	6.500	1/2	0.669	0.826
1 1/4"	1-206-20-P	\$13.45	1-206-20-P-C	\$15.60	4	1.732	1.500	1.902	1.689	0.630	3.228	4.764	6.500	1/2	0.669	0.826
1 5/16"	1-207-21-P	\$17.15	1-207-21-P-C	\$19.45	5	1.890	1.689	2.012	1.874	0.669	3.622	4.961	6.575	1/2	0.669	0.826
1 3/8"	1-207-22-P	\$16.20	1-207-22-P-C	\$16.20	5	1.890	1.689	2.012	1.874	0.669	3.622	4.961	6.575	1/2	0.669	0.826
1 7/16"	1-207-23-P	\$16.20	1-207-23-P-C	\$16.20	5	1.890	1.689	2.012	1.874	0.669	3.622	4.961	6.575	1/2	0.669	0.826
1 1/2"	1-208-24-P	\$17.45	1-208-24-P-C	\$19.95	6	2.047	1.937	2.217	1.937	0.709	3.858	5.354	7.250	1/2	0.669	0.827
1 5/8"	1-209-26-P	\$24.65	1-209-26-P-C	\$27.40	7	2.126	1.938	2.217	2.126	0.787	4.154	5.748	7.469	1/2	0.669	0.827
1 11/16"	1-209-27-P	\$24.65	1-209-27-P-C	\$27.40	7	2.126	1.938	2.217	2.126	0.787	4.154	5.748	7.469	1/2	0.669	0.827
1 3/4"	1-209-28-P	\$20.55	1-209-28-P-C	\$22.85	7	2.126	1.938	2.217	2.126	0.787	4.154	5.748	7.469	1/2	0.669	0.827
1 7/8"	1-210-30-P	\$30.70	1-210-30-P-C	\$32.50	8	2.244	2.032	2.469	2.252	0.827	4.417	6.260	8.125	5/8	0.781	0.866
1 15/16"	1-210-31-P	\$25.60	1-210-31-P-C	\$27.05	8	2.244	2.032	2.469	2.252	0.827	4.417	6.260	8.125	5/8	0.781	0.866
2"	1-210-32-P	\$25.60	1-210-32-P-C	\$27.05	8	2.244	2.032	2.469	2.252	0.827	4.417	6.260	8.125	5/8	0.781	0.866
2"	1-211-32-P	\$31.55	1-211-32-P-C	\$33.85	10	2.362	2.189	2.807	2.500	0.866	4.902	6.772	8.625	5/8	0.781	0.866
2 1/8"	1-211-34-P	\$37.90	1-211-34-P-C	\$40.65	10	2.362	2.189	2.807	2.500	0.866	4.902	6.772	8.625	5/8	0.781	0.866
2 3/16"	1-211-35-P	\$31.55	1-211-35-P-C	\$40.65	10	2.362	2.189	2.807	2.500	0.866	4.902	6.772	8.625	5/8	0.781	0.866
2 1/4"	1-212-36-P	\$38.05	1-212-36-P-C	\$50.85	12	2.598	2.563	3.059	2.752	0.945	5.394	7.323	9.500	5/8	0.781	0.984
2 3/8"	1-212-38-P	\$45.65	1-212-38-P-C	\$50.85	12	2.598	2.563	3.059	2.752	0.945	5.394	7.323	9.500	5/8	0.781	0.984
2 1/16"	1-212-39-P	\$38.05	1-212-39-P-C	\$42.35	12	2.598	2.563	3.059	2.752	0.945	5.394	7.323	9.500	5/8	0.781	0.984
2 1/2"	1-213-40-P	\$49.20	1-213-40-P-C	\$55.15	16	2.756	2.563	3.374	3.000	1.024	5.866	7.992	10.437	3/4	1.000	1.188
2 3/4"	1-214-44-P	\$67.85	1-214-44-P-C	\$66.85	18	2.835	2.937	3.374	3.126	1.063	6.102	8.268	10.472	3/4	1.000	1.188
2 15/16"	1-215-47-P	\$68.40	1-215-47-P-C	\$78.30	19	2.913	3.063	3.626	3.252	1.102	6.362	8.543	10.813	3/4	1.000	1.188
3"	1-215-48-P	\$68.40	1-215-48-P-C	\$78.30	19	2.913	3.063	3.626	3.252	1.102	6.362	8.543	10.813	3/4	1.000	1.188



Take-Up Bearings

• Brand new, DURA-ROLL take-up bearings. Cast iron housing. Two set screws on inner race. Bearing has grease zerk. Additional specs on our website.

UCT Series Two Set Screws, No Lock Collar					
ITEM	Bore	Housing	Bore thru-lgth.	Shpg.	Price
1-205-16-T	1"	UCT205	1.338"	2 lbs.	\$12.95
1-206-20-T	1.25"	UCT206	1.5"	3 lbs.	\$14.95
1-207-20-T	1.25"	UCT207	1.69"	4 lbs.	\$18.95
1-207-23-T	1.4375"	UCT207	1.69"	4 lbs.	\$18.95
1-208-24-T	1.5"	UCT208	1.937"	6 lbs.	\$20.10
1-209-28-T	1.75"	UCT209	1.937"	6 lbs.	\$27.95
1-210-31-T	1.9375"	UCT210	2.03"	6 lbs.	\$31.95
1-211-32-T	2"	UCT211	2.19"	10 lbs.	\$42.95

Ball Bearings

• New. Ball bearings with two set screws. Use in pillow block or flange housing (not included).



ITEM	Bore	Housing	Bore thru-lgth.	Shpg.	Price
1-205-25MM-B	25 mm	UC205	34 mm (1.34")	1 lb.	\$5.95
1-207-35MM-B	35 mm	UC207	43 mm (1.69")	2 lbs.	\$7.95
1-209-45MM-B	45 mm	UC209	48 mm (1.89")	2 lbs.	\$9.95
1-205-16-B	1"	UC205	1.34"	1 lb.	\$5.80
1-207-22-B	1 3/8"	UC207	1.69"	1 1/2 lbs.	\$9.10
1-208-24-B	1 1/2"	UC208	1.94"	3 lbs.	\$11.30
1-209-27-B	1 11/16"	UC209	1 15/16"	2 lbs.	\$9.95