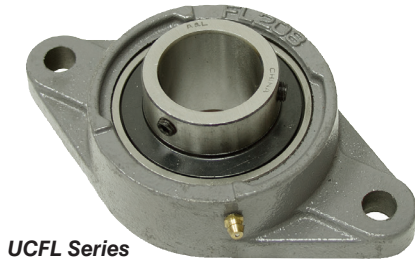
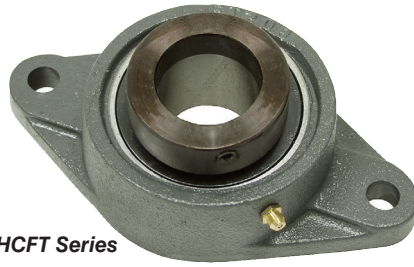


2 Bolt Flange Bearings

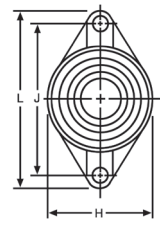
• Brand new 200 series normal duty flange bearings. Cast iron construction with self-aligning ball bearing insert and grease zerk.



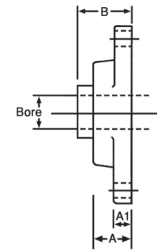
UCFL Series



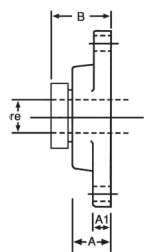
HCFT Series



Front View
Both Series



Side UCFL



Side HCFT

Bore	UCFL Series Two Set Screws, No Lock Collar									HCFT Series Eccentric Locking Collar w/Set Screws									Shpg.
	ITEM	Price	A	A1	B	H	J	L	Bolt	ITEM	Price	A	A1	B	H	J	L	Bolt	
1/2"	1-201-08-2	\$ 8.85	1.004	0.433	1.312	2.362	3.543	4.449	3/8	N/A	-	-	-	-	-	-	-	-	3
5/8"	1-202-10-2	\$ 8.85	1.004	0.433	1.312	2.362	3.543	4.449	3/8	N/A	-	-	-	-	-	-	-	-	3
3/4"	1-204-12-2	\$ 8.50	1.004	0.433	1.312	2.362	3.543	4.449	3/8	1-204-12-2-C	\$ 9.45	1.161	0.591	1.791	2.375	3.543	4.429	3/8	3
7/8"	1-205-14-2	\$ 9.70	1.063	0.512	1.405	2.677	3.898	5.118	7/16	1-205-14-2-C	\$12.85	1.181	0.591	1.807	2.756	3.898	4.843	7/16	3
15/16"	1-205-15-2	\$11.65	1.063	0.512	1.405	2.677	3.898	5.118	7/16	1-205-15-2-C	\$12.85	1.181	0.591	1.807	2.756	3.898	4.843	7/16	3
1"	1-205-16-2	\$ 9.70	1.063	0.512	1.405	2.677	3.898	5.118	7/16	1-205-16-2-C	\$10.70	1.181	0.591	1.807	2.756	3.898	4.843	7/16	3
1 1/8"	1-206-18-2	\$12.10	1.221	0.512	1.583	3.150	4.606	5.827	7/16	1-206-18-2-C	\$13.70	1.280	0.630	1.972	3.228	4.587	5.591	7/16	4
1 3/16"	1-206-19-2	\$14.55	1.221	0.512	1.583	3.150	4.606	5.827	7/16	1-206-19-2-C	\$16.45	1.280	0.630	1.972	3.228	4.587	5.591	7/16	4
1 1/4"	1-206-20-2	\$12.10	1.221	0.512	1.583	3.150	4.606	5.827	7/16	1-206-20-2-C	\$13.70	1.280	0.630	1.972	3.228	4.587	5.591	7/16	4
1 1/4"	1-207-20-2	\$15.05	1.339	0.551	1.748	3.543	5.118	6.339	1/2	1-207-20-2-C	\$15.75	1.417	0.669	2.098	3.701	5.118	6.221	1/2	5
1 5/16"	1-207-21-2	\$15.90	1.339	0.551	1.748	3.543	5.118	6.339	1/2	1-207-21-2-C	\$18.90	1.417	0.669	2.098	3.701	5.118	6.221	1/2	5
1 3/8"	1-207-22-2	\$15.05	1.339	0.551	1.748	3.543	5.118	6.339	1/2	1-207-22-2-C	\$18.90	1.417	0.669	2.098	3.701	5.118	6.221	1/2	5
1 7/16"	1-207-23-2	\$15.05	1.339	0.551	1.748	3.543	5.118	6.339	1/2	1-207-23-2-C	\$15.75	1.417	0.669	2.098	3.701	5.118	6.221	1/2	5
1 1/2"	1-208-24-2	\$15.95	1.417	0.551	2.016	3.937	5.669	6.890	1/2	1-208-24-2-C	\$18.55	1.535	0.669	2.319	4.055	5.650	6.772	1/2	6
1 5/8"	1-209-26-2	\$23.30	1.496	0.630	2.055	4.252	5.827	7.402	9/16	1-209-26-2-C	\$26.35	1.575	0.709	2.319	4.252	5.847	7.087	9/16	7
1 11/16"	1-209-27-2	\$23.30	1.496	0.630	2.055	4.252	5.827	7.402	9/16	1-209-27-2-C	\$26.35	1.575	0.709	2.319	4.252	5.847	7.087	9/16	7
1 3/4"	1-209-28-2	\$23.30	1.496	0.630	2.055	4.252	5.827	7.402	9/16	1-209-28-2-C	\$26.35	1.575	0.709	2.319	4.252	5.847	7.087	9/16	7
1 7/8"	1-210-30-2	\$29.35	1.575	0.630	2.150	4.528	6.181	7.756	9/16	1-210-30-2-C	\$32.05	1.772	0.787	2.602	4.488	6.181	7.480	9/16	8
1 15/16"	1-210-31-2	\$29.35	1.575	0.630	2.150	4.528	6.181	7.756	9/16	1-210-31-2-C	\$32.05	1.772	0.787	2.602	4.488	6.181	7.480	9/16	8
2"	1-210-32-2	\$29.35	1.575	0.630	2.150	4.528	6.181	7.756	9/16	1-210-32-2-C	\$32.05	1.772	0.787	2.602	4.488	6.181	7.480	9/16	8
2"	1-211-32-2	\$35.10	1.693	0.709	2.299	5.118	7.244	8.819	5/8	1-211-32-2-C	\$40.15	1.890	0.827	2.937	5.039	7.244	8.543	5/8	9
2 1/8"	1-211-34-2	\$35.10	1.693	0.709	2.299	5.118	7.244	8.819	5/8	1-211-34-2-C	\$40.15	1.890	0.827	2.937	5.039	7.244	8.543	5/8	9
2 3/16"	1-211-35-2	\$35.10	1.693	0.709	2.299	5.118	7.244	8.819	5/8	1-211-35-2-C	\$40.15	1.890	0.827	2.937	5.039	7.244	8.543	5/8	9
2 1/4"	1-212-36-2	\$42.55	1.890	0.709	2.704	5.512	7.953	9.843	5/8	1-212-36-2-C	\$41.65	2.087	0.827	3.181	5.433	7.953	9.331	5/8	12
2 3/8"	1-212-38-2	\$42.55	1.890	0.709	2.704	5.512	7.953	9.843	5/8	1-212-38-2-C	\$41.65	2.087	0.827	3.181	5.433	7.953	9.331	5/8	12
2 7/16"	1-212-39-2	\$42.55	1.890	0.709	2.704	5.512	7.953	9.843	5/8	1-212-39-2-C	\$41.65	2.087	0.827	3.181	5.433	7.953	9.331	5/8	12
2 1/2"	1-213-40-2	\$56.05	1.969	0.787	2.744	6.102	8.268	10.158	3/4	N/A	-	-	-	-	-	-	-	-	15
2 3/4"	1-214-44-2	\$56.05	2.126	0.787	2.968	6.299	8.504	10.433	3/4	N/A	-	-	-	-	-	-	-	-	17
2 15/16"	1-215-47-2	\$65.15	2.205	0.787	3.093	6.496	8.858	10.827	3/4	N/A	-	-	-	-	-	-	-	-	18
3"	1-215-48-2	\$79.65	2.205	0.787	3.093	6.496	8.858	10.827	3/4	N/A	-	-	-	-	-	-	-	-	18

Flange Bearings



• Brand new. Two bolt stamped steel housing with sealed self aligning ball bearing. Inner race with 2 set screws.

ITEM	Bore	Centers	Bolt Uses		Shpg.	Price
			Bolts			
1-3031	1/2"	2 1/2"	1/4"	1/2 lb.	1/2 lb.	\$8.40
1-1869	5/8"	2 1/2"	1/4"	1/2 lb.	1/2 lb.	\$8.40
1-2386	3/4"	2 13/16"	5/16"	1/2 lb.	1/2 lb.	\$10.85
1-2387	1"	2.992"	5/16"	1 lb.	1 lb.	\$11.15
1-2388	1 1/4"	3 9/16"	3/8"	1 lb.	1 lb.	\$11.50

Special Purchase Cast Iron 2 Bolt Flange Bearings



Set Screw, No Lock Collar

ITEM	Bore	Shpg.	Price
1-205-16-2-S	1"	3 lbs.	\$6.95
1-207-23-2-S	1 7/16"	5 lbs.	\$9.95
1-215-47-2-S	2 15/16"	18 lbs.	\$9.95

Eccentric Locking Collar w/ Set Screw

ITEM	Bore	Shpg.	Price
1-211-35-2-C-S	2 3/16"	9 lbs.	\$7.95
1-212-39-2-C-S	2 7/16"	11 lbs.	\$8.95
1-215-47-2-C-S	2 15/16"	18 lbs.	\$9.95
1-207-23-2-C-S	1 7/16"	5 lbs.	\$4.95

Special Purchase Cast Iron 4 Bolt Flange Bearings



Set Screw, No Lock Collar

ITEM	Bore	Shpg.	Price
1-211-32-4-S	2"	9 lbs.	\$19.95

Eccentric Locking Collar w/ Set Screw

ITEM	Bore	Shpg.	Price
1-2196	50 mm	9 lbs.	\$9.95
1-211-35-4-C-S	2 3/16"	9 lbs.	\$7.95