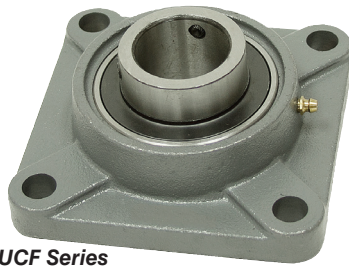
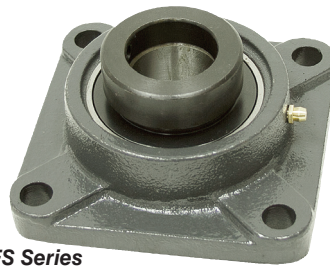


4 Bolt Flange Bearings

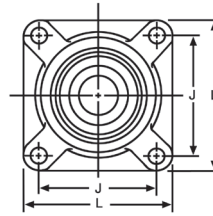
• Brand new 200 series normal duty flange bearings. Cast iron construction with self-aligning ball bearing insert and grease zerk.



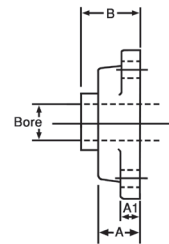
UCF Series



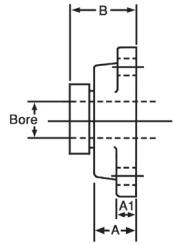
HCFS Series



Front View Both Series



Side UCF



Side HCFS

UCF Series Two Set Screws, No Lock Collar										HCFS Series Eccentric Locking Collar w/Set Screws										
Bore	ITEM	Shpg.	Price	Dimensions						Bolt	ITEM	Shpg.	Price	Dimensions						Bolt
				A	A1	B	J	L	A					A1	B	J	L			
1/2"	1-201-08-4	3	\$10.65	1.004	0.433	1.311	2.520	3.386	3/8	1-201-08-4-C	3	\$11.30	1.161	0.591	1.791	2.500	3.386	3/8		
5/8"	1-202-10-4	3	\$ 8.90	1.004	0.433	1.311	2.520	3.386	3/8	1-202-10-4-C	3	\$11.30	1.161	0.591	1.791	2.500	3.386	3/8		
3/4"	1-204-12-4	3	\$ 8.50	1.004	0.433	1.311	2.520	3.386	3/8	1-204-12-4-C	3	\$ 9.45	1.161	0.591	1.791	2.500	3.386	3/8		
7/8"	1-205-14-4	4	\$ 9.70	1.063	0.512	1.406	2.756	3.740	3/8	1-205-14-4-C	4	\$12.85	1.181	0.591	1.807	2.756	3.661	3/8		
1 1/16"	1-205-15-4	4	\$11.65	1.063	0.512	1.406	2.756	3.740	3/8	1-205-15-4-C	4	\$12.85	1.181	0.591	1.807	2.756	3.661	3/8		
1"	1-205-16-4	4	\$ 9.70	1.063	0.512	1.406	2.756	3.740	7/16	1-205-16-4-C	4	\$10.70	1.181	0.591	1.807	2.756	3.661	3/8		
1 1/8"	1-206-18-4	4	\$12.10	1.221	0.512	1.583	3.268	4.252	7/16	1-206-18-4-C	4	\$16.45	1.280	0.630	1.972	3.248	4.173	7/16		
1 3/16"	1-206-19-4	4	\$14.55	1.221	0.512	1.583	3.268	4.252	7/16	1-206-19-4-C	4	\$16.45	1.280	0.630	1.972	3.248	4.173	7/16		
1 1/4"	1-206-20-4	4	\$12.10	1.221	0.512	1.583	3.268	4.252	7/16	1-206-20-4-C	4	\$13.70	1.280	0.630	1.972	3.248	4.173	7/16		
1 1/4"	1-207-20-4	5	\$15.05	1.339	0.591	1.748	3.622	4.606	7/16	1-207-20-4-C	5	\$15.75	1.378	0.669	2.098	3.622	4.567	7/16		
1 5/16"	1-207-21-4	5	\$15.95	1.339	0.591	1.748	3.622	4.606	7/16	1-207-21-4-C	5	\$18.90	1.378	0.669	2.098	3.622	4.567	7/16		
1 3/8"	1-207-22-4	5	\$15.05	1.339	0.591	1.748	3.622	4.606	7/16	1-207-22-4-C	5	\$15.75	1.378	0.669	2.098	3.622	4.567	7/16		
1 7/16"	1-207-23-4	5	\$15.05	1.339	0.591	1.748	3.622	4.606	7/16	1-207-23-4-C	5	\$15.75	1.378	0.669	2.098	3.622	4.567	7/16		
1 1/2"	1-208-24-4	6	\$15.95	1.417	0.591	2.016	4.016	5.118	1/2	1-208-24-4-C	6	\$18.55	1.535	0.669	2.319	3.996	5.079	1/2		
1 5/8"	1-209-26-4	7	\$23.35	1.496	0.630	2.055	4.134	5.394	9/16	1-209-26-4-C	7	\$26.35	1.575	0.709	2.319	4.134	5.315	9/16		
1 11/16"	1-209-27-4	7	\$23.35	1.496	0.630	2.055	4.134	5.394	9/16	1-209-27-4-C	7	\$26.35	1.575	0.709	2.319	4.134	5.315	9/16		
1 3/4"	1-209-28-4	7	\$19.40	1.496	0.630	2.055	4.134	5.394	9/16	1-209-28-4-C	7	\$21.95	1.575	0.709	2.319	4.134	5.315	9/16		
1 7/8"	1-210-30-4	7	\$29.35	1.575	0.630	2.150	4.370	5.630	9/16	1-210-30-4-C	8	\$32.05	1.772	0.787	2.602	4.370	5.630	9/16		
1 5/8"	1-210-31-4	7	\$24.45	1.575	0.630	2.150	4.370	5.630	9/16	1-210-31-4-C	8	\$26.70	1.772	0.787	2.602	4.370	5.630	9/16		
2"	1-210-32-4	7	\$24.45	1.575	0.630	2.150	4.370	5.630	9/16	1-210-32-4-C	8	\$26.70	1.772	0.787	2.602	4.370	5.630	9/16		
2"	1-211-32-4	9	\$29.25	1.693	0.709	2.299	5.118	6.378	5/8	1-211-32-4-C	10	\$33.45	1.929	0.827	2.937	5.118	6.378	5/8		
2 1/8"	1-211-34-4	9	\$35.10	1.693	0.709	2.299	5.118	6.378	5/8	1-211-34-4-C	10	\$40.15	1.929	0.827	2.937	5.118	6.378	5/8		
2 3/16"	1-211-35-4	9	\$35.10	1.693	0.709	2.299	5.118	6.378	5/8	1-211-35-4-C	10	\$40.15	1.929	0.827	2.937	5.118	6.378	5/8		
2 1/4"	1-212-36-4	11	\$35.45	1.890	0.709	2.705	5.630	6.890	5/8	1-212-36-4-C	12	\$49.05	2.106	0.866	3.181	5.630	6.890	5/8		
2 3/8"	1-212-38-4	11	\$42.55	1.890	0.709	2.705	5.630	6.890	5/8	1-212-38-4-C	12	\$49.05	2.106	0.866	3.181	5.630	6.890	5/8		
2 7/16"	1-212-39-4	11	\$35.45	1.890	0.709	2.705	5.630	6.890	5/8	1-212-39-4-C	12	\$40.90	2.106	0.866	3.181	5.630	6.890	5/8		
2 1/2"	1-213-40-4	13	\$46.70	1.969	0.866	2.744	5.866	7.362	5/8	1-213-40-4-C	15	\$64.70	2.284	0.866	3.528	5.866	7.244	5/8		
2 3/4"	1-214-44-4	15	\$65.35	2.126	0.866	2.969	5.984	7.598	1 1/16	1-214-44-4-C	16	\$72.90	2.362	0.906	3.528	5.984	7.402	5/8		
2 5/8"	1-215-47-4	17	\$74.05	2.205	0.866	3.091	6.260	7.874	1 1/16	1-215-47-4-C	18	\$87.10	2.441	0.945	3.772	6.000	7.874	5/8		
3"	1-215-48-4	17	\$74.05	2.205	0.866	3.091	6.260	7.874	1 1/16	1-215-48-4-C	18	\$72.55	2.441	0.945	3.772	6.000	7.874	5/8		

U-Joint Assembly



ITEM 1-2738 \$4.99

• New, universal joint assembly originally made for use in automotive steering applications. Ideal for low torque, low speed projects. Gray rubber boot. Rubber boot end accepts a round shaft 0.645" in diameter x 1 5/16" long with two flats, 0.58" across the flats. Other end accepts a 7/8" diameter shaft with two flats (0.667" across). 14" overall length, tip-to-tip. Tube outside diameter 7/8". Shpg. 3 lb.

2.25" Spherical Bearing



ITEM 1-115559 \$19.95

• New, CCVI Bearing Industries model GEZ57ES heavy duty spherical bearing. Use in cylinders designed for swivel ends.

SPECIFICATIONS

- Bore 2.25"
- Inner Ring Width 1.97"
- Spherical Dia. 3.5625"
- Outer Ring Width 1.687"
- Misalignment Angle 6 degrees

2.25" Spherical Bearing



ITEM 1-114529 \$24.95

• New, CCVI Bearing Industries model GEZ63ES heavy duty spherical bearing. Use in cylinders designed for swivel ends.

SPECIFICATIONS

- Bore 2.5"
- Inner Ring Width 2.187"
- Spherical Dia. 3.9375"
- Outer Ring Width 1.875"
- Misalignment Angle 6 degrees
- Load limits
- Static Radial 191,250 (lbf)
- Dynamic Radial 63,000 (lbf)
- Shpg. 3 1/2 lbs.
- Load limits
- Static Radial 234,000 (lbf)
- Dynamic Radial 77,625 (lbf)
- Shpg. 4 1/2 lbs.