

**Weld-on Roller Chain Sprockets & Hubs**

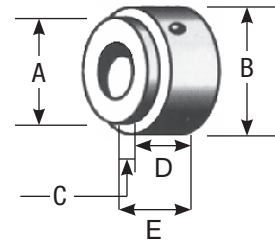
• Brand new. Weld on roller chain sprocket and hub assembly allows multiple combination of bore to sprocket types. Hubs have machined pilot for sprocket to slip over for easy alignment and welding. Keyway slot and set screw furnished with hub.

**ORDERING:** Select sprocket by chain pitch and number of teeth,

THEN select hub with matching letter code (V, W, X) and desired bore size.



**Dimensions of Hubs**



All hubs furnished with standard keyway and two setscrews.

V Hub		W Hub		X Hub	
A	1 1/8"	A	1 5/8"	A	2"
B	1 7/16"	B	1 13/16"	B	2 1/2"
C	7/16"	C	7/16"	C	7/16"
D	3/4"	D	1"	D	1"
E	1 3/16"	E	1 7/16"	E	1 7/16"

# Teeth	40 Pitch			50 Pitch			60 Pitch		
	ITEM	Dia Hub	Price	ITEM	Dia Hub	Price	ITEM	Dia Hub	Price
9	-	-	-	1-1980-9	2.09 V	\$4.55	1-1981-9	2.51 V	\$5.10
10	-	-	-	1-1980-10	2.30 V	\$4.55	1-1981-10	2.76 V	\$5.40
11	1-1979-11	2.00 V	\$3.75	1-1980-11	2.50 V	\$4.40	1-1981-11	3.00 W	\$5.70
12	1-1979-12	2.17 V	\$3.80	1-1980-12	2.71 W	\$4.80	1-1981-12	3.25 W	\$6.40
13	1-1979-13	2.33 V	\$4.00	1-1980-13	2.92 W	\$4.95	1-1981-13	3.49 W	\$6.50
14	1-1979-14	2.49 V	\$4.15	1-1980-14	3.12 W	\$5.20	1-1981-14	3.74 W	\$7.10
15	1-1979-15	2.65 V	\$4.30	1-1980-15	3.32 W	\$5.60	1-1981-15	3.98 X	\$7.75
16	1-1979-16	2.82 W	\$4.50	1-1980-16	3.52 W	\$5.75	1-1981-16	4.22 X	\$8.05
17	1-1979-17	2.98 W	\$4.95	1-1980-17	3.72 X	\$6.45	1-1981-17	4.47 X	\$9.15
18	1-1979-18	3.14 W	\$4.35	1-1980-18	3.92 X	\$6.55	1-1981-18	4.7 X	\$9.75
19	1-1979-19	3.23 W	\$4.55	1-1980-19	4.13 X	\$7.15	1-1981-19	4.95 X	\$10.75
20	1-1979-20	3.48 X	\$4.90	1-1980-20	4.33 X	\$7.55	1-1981-20	5.19 X	\$11.90
21	1-1979-21	3.62 X	\$5.45	1-1980-21	4.53 X	\$8.10	1-1981-21	5.46 X	\$13.05
22	1-1979-22	3.78 X	\$5.80	1-1980-22	4.72 X	\$8.65	1-1981-22	5.67 X	\$14.20
23	1-1979-23	3.94 X	\$6.25	1-1980-23	4.92 X	\$9.05	1-1981-23	5.91 X	\$15.35
24	1-1979-24	4.1 X	\$6.80	1-1980-24	5.13 X	\$9.60	1-1981-24	6.15 X	\$16.55
25	1-1979-25	4.26 X	\$7.20	1-1980-25	5.33 X	\$10.35	1-1981-25	6.4 X	\$17.85
26	1-1979-26	4.42 X	\$7.60	1-1980-26	5.53 X	\$11.10	1-1981-26	6.63 X	\$19.15
27	1-1979-27	4.58 X	\$8.20	1-1980-27	5.72 X	\$11.90	1-1981-27	6.87 X	\$20.50
28	1-1979-28	4.74 X	\$8.35	1-1980-28	5.93 X	\$12.60	1-1981-28	7.15 X	\$20.85
29	1-1979-29	4.90 X	\$8.90	1-1980-29	6.12 X	\$13.15	1-1981-29	7.35 X	\$22.25
30	1-1979-30	5.06 X	\$9.45	1-1980-30	6.32 X	\$14.30	1-1981-30	7.59 X	\$23.45
31	1-1979-31	5.22 X	\$10.00	1-1980-31	6.52 X	\$14.95	1-1981-31	7.83 X	\$25.00
32	1-1979-32	5.38 X	\$10.60	1-1980-32	6.72 X	\$16.15	1-1981-32	8.07 X	\$26.10
33	1-1979-33	5.54 X	\$11.25	1-1980-33	6.92 X	\$17.10	1-1981-33	8.30 X	\$28.05
34	1-1979-34	5.70 X	\$11.80	1-1980-34	7.12 X	\$17.70	1-1981-34	8.54 X	\$29.70
35	1-1979-35	5.86 X	\$12.55	1-1980-35	7.32 X	\$18.50	1-1981-35	8.78 X	\$31.05
36	1-1979-36	6.02 X	\$13.15	1-1980-36	7.52 X	\$20.10	1-1981-36	9.02 X	\$32.30
37	1-1979-37	6.18 X	\$11.25	1-1980-37	7.72 X	\$20.75	1-1981-37	9.26 X	\$34.75
38	1-1979-38	6.33 X	\$14.50	1-1980-38	7.92 X	\$21.85	1-1981-38	9.50 X	\$36.10
39	1-1979-39	6.49 X	\$14.90	1-1980-39	8.12 X	\$22.20	1-1981-39	9.74 X	\$38.25
40	1-1979-40	6.65 X	\$15.45	1-1980-40	8.32 X	\$22.45	1-1981-40	9.98 X	\$39.50
41	1-1979-41	6.81 X	\$16.00	1-1980-41	8.52 X	\$23.65	1-1981-41	10.22 X	\$34.95
42	1-1979-42	6.97 X	\$16.95	1-1980-42	8.72 X	\$25.00	1-1981-42	10.46 X	\$36.10
43	1-1979-43	7.13 X	\$17.60	1-1980-43	8.91 X	\$25.75	1-1981-43	10.70 X	\$38.90
44	1-1979-44	7.29 X	\$19.00	1-1980-44	9.11 X	\$27.00	1-1981-44	10.94 X	\$38.95
45	1-1979-45	7.45 X	\$19.30	1-1980-45	9.31 X	\$28.00	1-1981-45	11.18 X	\$38.95
46	1-1979-46	7.61 X	\$19.80	1-1980-46	9.51 X	\$29.60	1-1981-46	11.42 X	\$39.25
48	1-1979-48	7.93 X	\$20.90	1-1980-48	9.91 X	\$32.40	1-1981-48	11.89 X	\$41.50
50	1-1979-50	8.25 X	\$24.30	1-1980-50	10.31 X	\$35.40	-	-	-
52	-	-	-	1-1980-52	10.71 X	\$36.10	-	-	-
54	1-1979-54	8.89 X	\$25.75	1-1980-54	11.11 X	\$34.85	1-1981-54	13.33 X	\$51.80
60	1-1979-60	9.84 X	\$30.00	1-1980-60	12.30 X	\$39.95	1-1981-60	14.76 X	\$66.00
72	1-1979-72	11.75 X	\$36.85	1-1980-72	14.69 X	\$59.65	-	-	-

**Shipping Weights**

12-40 Teeth	2 lbs.	12-25 Teeth	2 lbs.	12-23 Teeth	3 lbs.
41-50 Teeth	4 lbs.	26-40 Teeth	4 lbs.	24-30 Teeth	4 lbs.
54-60 Teeth	5 lbs.	41-48 Teeth	7 lbs.	31-40 Teeth	8 lbs.
72 Teeth	9 lbs.	49-60 Teeth	11 lbs.	41-48 Teeth	12 lbs.
		72 Teeth	17 lbs.	54-60 Teeth	19 lbs.

**1" 15 Spline Bore**

ITEM 1-2342-15SP

**\$15.55**

• W hub. Shpg. 1 1/2 lbs.



**1 3/4" 20 Spline Bore**

ITEM 1-2343-20SPB

**\$24.20**

• X hub. Shpg. 2 lbs.

