

### 115 VAC Inline Gearmotors

• New, inline gearmotors. Ideal replacement corn pellet stove, auger motor. Originally built for Bixby stoves. Aluminum gear housing.

**1.8 RPM**

**ITEM 5-1771**

**\$18.95**

• Four 8-32 UNC tapped bolt hole face mount on 2<sup>3</sup>/<sub>8</sub>" x 2<sup>3</sup>/<sub>8</sub>" centers.

**SPECIFICATIONS**

- SPG Co. Model ISG-3220BXA(P/N 2051788)
- Speed 1.8 RPM
- Voltage 115 AC
- Amperage 0.4 Amps
- Torque 110 in - lbs.
- Rotation CW
- Duty intermittent (5 min)
- Enclosure open
- Mount face
- Shaft 1/2" dia. x 1 3/4", 1/2-13 UNC RH threaded
- Size 3 5/8" x 2 3/4" x 4 3/4"
- Shpg. 5 lbs.



**6.5 RPM**

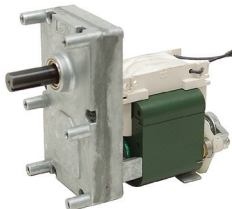
**ITEM 5-1770**

**\$18.95**

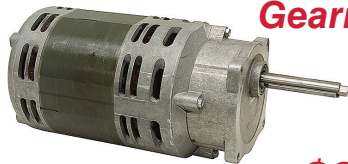
• Four 10-32 UNF tapped bolt hole face mount on 2<sup>3</sup>/<sub>8</sub>" x 2<sup>3</sup>/<sub>8</sub>" centers. Integral brake.

**SPECIFICATIONS**

- SPG Co. Model ISG-3250BXA(P/N 2051746)
- Speed 6.5 RPM
- Voltage 115 AC
- Amperage 2.65 Amps
- Torque 225 in - lbs.
- Rotation CW
- Duty intermittent (1 min)
- Enclosure open
- Mount face
- Shaft 1/2" dia. x 1 1/4" w/keyway
- Size 5 1/4" x 2 3/4" x 4 3/4"
- Shpg. 7 lbs.



### 743 RPM, 115 VAC Inline Gearmotor



**ITEM 5-1647**

**\$39.99**

• Used, BODINE Electric, inline gearmotor. Includes run and start capacitors. Requires relay (not included) for start capacitor.

**SPECIFICATIONS**

- Speed 743 RPM
- Voltage 115 AC
- Amperage 9.9 Amps
- Power 440 watts
- Torque 44 in - lbs.
- Gear ratio 2.42:1
- Rotation CW
- Duty continuous
- Enclosure open
- Mount face 3 5/8" x 3 5/8"
- Shaft 16mm x 3 1/2" w/keyway
- Size 5 1/2" x 10 1/2" x 5 1/2"
- Shpg. 36 lbs.

### 115 VAC Synchronous Timing Motor



**ITEM 10-958-A**

**\$1.89**

• New. For timing, window display and sign animation, experimental purposes, etc.

**SPECIFICATIONS**

- 120 VAC
- 4.5 watts
- 60 Hz
- Continuous duty
- 50 RPH
- CCW rotation
- Shaft 3/16" dia. 9 T gear
- Mount 2 bolt on 1 7/8" ctrs.
- Size 1 1/8" x 2" x 2 1/2"
- Shpg. 1 lb.

### 115 VAC Inline Gearmotors



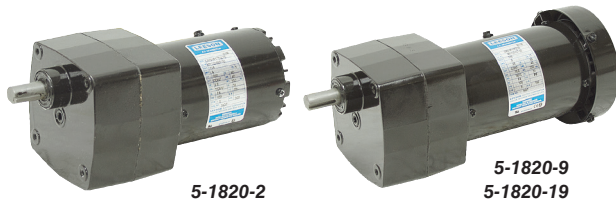
**\$394.80 each**

• Brand new LEESON inline split capacitor gearmotors. Features steel gears and needle bearing supported output shaft. No thermal overload. Capacitor furnished.

**SPECIFICATIONS**

- Voltage 115 AC
- Torque 100 in - lbs.
- Rotation reversible
- Duty continuous
- Enclosure TENV
- Mount four 10-32 holes on face, 2.645" x 2.645"
- Shaft 1/2" dia. x 1" w/1/8" keyway

ITEM	Model	RPM	Amps	HP	Gear Ratio	Size	Shpg.
5-1820-2	M1125050	1.9	0.4	1/150	900:1	7.25" x 3.63" x 3.63"	9 lbs.
5-1820-9	M1125127	9	0.9	1/15	180:1	8.86" x 3.75" x 3.97"	11 lbs.
5-1820-19	M1125128	19	0.9	1/15	180:1	8.86" x 3.75" x 3.97"	12 lbs.



### 58 RPM 115 VAC LEESON Gearmotor



**ITEM 5-1894-A**

**\$249.95**

• New, LEESON model# W5185040.00 capacitor-start, right-angle gearmotor. Thermal protection with manual reset. STEARNS model# 104816101BB 3 lb-ft. manual brake installed on end of motor.

**SPECIFICATIONS**

- Speed 58 RPM
- Voltage 115 VAC, 60 Hz
- Amperage 4.2 Amps
- Ratio 28:1
- Torque 410 in-lbs.
- Power 1/3 HP
- Rotation Reversible
- Duty Continuous
- Enclosure ODP
- Mount Four 9/16" x 1/4" slots on 2 15/16" x 1 31/32" centers
- Shaft 3/4" dia. x 1-1/2" long w/ 3/16" keyway, tapped 1/4"-20
- Size 16 3/4" x 7 3/4" x 8 1/4"
- Shpg. 31 lbs.

### 15 RPM, 115 VAC, Gearmotor



**ITEM 5-1684**

**\$9.95**

• New, MERKLE-KORFF Model 3715UP-250. Thermally protected, shaded pole motor. Metal gear housing.

**SPECIFICATIONS**

- Speed 15 RPM
- Voltage 115 AC
- Amperage 2.7 Amps
- Power 97 Watts at idle
- Rotation CW
- Duty intermittent
- Face mt 3 untapped bosses
- Shaft Threaded end 5/16"-18 LH Base end 3/8" dia. x 3/8" long Overall lgth. 1 5/16"
- Size 3 3/8" x 2 1/2" x 4"
- Shpg. 3 lbs.

### 3.5 RPM 115 VAC Inline Gearmotor



**ITEM 5-1883**

**\$11.95**

• New, SPG Co. model ISG-31315FKA (P/N 40384rG). Inline gearmotor. Originally built for timer controls on water softeners. Aluminum gear housing. Four 10-32 UNF tapped bolt hole face mount on 1 1/2" x 1 1/2" centers.

**SPECIFICATIONS**

- Speed 3.5 RPM
- Voltage 115 AC
- Amperage 1/2 Amp
- Rotation CW
- Duty Intermittent (30 sec- on/30 seconds off)
- Enclosure Open
- Mount Face
- Shafts Front-3/8" dia. x 0.7". Rear-1/4" dia. x 3/4" both have cross holes
- Size 2 1/4" x 3" x 5"
- Shpg. 3 lbs.

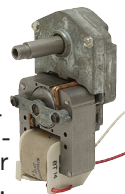
### 62 RPM, 115 VAC

**ITEM 5-1768 \$8.99**

• New, Brevel 782 inline gearmotor. T.P.I. Model 8T-115-7AM209A10. Aluminum gear housing. Shaded pole motor. Mounting holes tapped 8-32.

**SPECIFICATIONS**

- Speed 62 RPM
- Voltage 115 AC
- Amperage 4 Amps
- Rotation CW
- Duty intermittent
- Enclosure open
- Mnt. 4 holes on back face
- Shaft 1/2" dia. x 1 1/2" hollow threaded 7/16"-20 LH
- Size 2 1/2" x 2" x 5 3/4"
- Shpg. 3 lbs.



### 80 RPM, 120 VAC

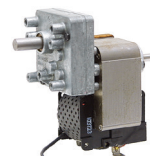
**ITEM 5-1572**

**\$8.95**

• New BREVEL Model Y. Inline parallel shaft gearmotor.

**SPECIFICATIONS**

- RPM 80
- Voltage 120 VAC
- Amps 2 (no load)
- Rotation CW
- Duty intermittent
- 4 hole face mount 1 9/16" x 1 1/4" ctrs.
- Shaft 3/8" diam. x 3/4" w/ flat
- Size 3 1/8" x 2 1/2" x 4 3/8"
- Shpg. 4 lbs.



### 100 RPM 115 AC

**ITEM 5-1219 \$4.95**

• New MERKLE-KORFF.

**SPECIFICATIONS**

- RPM 100
- Voltage 115
- Amps 1.25
- Torque 4 in. lbs.
- Rotation CCW
- Duty intermittent
- Shaft 5/16" diam. x 1 1/2" w/crosshole
- Mount front
- Size 2 3/4" x 2 1/2" x 5 1/4"
- Shpg. 3 lbs.



### 135 RPM, 115 VAC

**ITEM 5-1504**

**\$5.99**

• New MOLON LIM-30146-3. Inline gearmotor. 1.25 mFd capacitor included.

**SPECIFICATIONS**

- RPM 135
- Voltage 115 AC
- Amps 0.1
- HP 1/130
- Torque 58 in-oz
- Rotation reversible
- Duty intermittent
- Shaft 1/4" dia. x 3/8" w/flat
- Mount two bolt face 2 1 1/16" ctrs.
- Size 1 7/8" x 2 3/8" x 2 3/8"
- Shpg. 1 1/2 lbs.

