

5" x 1 1/4" Swivel Plain Stem Caster

ITEM 1-4538
\$4.95



• New, MEDCASTER model# HC05RPP125TLCL02 plain stem caster with sheet metal threadguards and central total brake. Intended for use with hospital beds. Braking mechanism is operated by rotating 11mm (0.433") hex.

- SPECIFICATIONS**
- Wheel Size 5" x 1 1/4"
 - Load Capacity 260 lbs.
 - Mounting Height 6 7/8"
 - Brake Wheel and Swivel
 - Mount 32mm x 2" long plane stem w/ two M6-
 - 1.0 tapped bolt holes
 - Wheel Tread Grey
 - Thermoplastic Rubber
 - Caster Wheel Core Material Polypropylene
 - Caster Wheel Bearing Ball
 - Shpg. 5 lbs.

5" x 1 1/4" Swivel Square Stem Caster

ITEM 1-4251
\$4.95



• New, ALBION Model 02XS05051S004 swivel square stem caster. X-tra soft rubber flat tread. Delrin bushing. Plated caster yoke.

- SPECIFICATIONS**
- Wheel size 5" dia. x 1 1/4" w.
 - Load capacity 325 lbs.
 - Square stem
 - Mount square 7/8" x 1 3/4" long stem w/ 2 bolt holes
 - Bolt holes 1/4" dia.
 - Shpg. 2 lbs.

5" x 1 1/4" Swivel Stem Caster

ITEM 1-4033
\$4.99



• New, swivel stem caster. Plastic yoke and wheel plates. Thermoplastic rubber wheel.

- SPECIFICATIONS**
- Wheel size 5" dia. x 1 1/4"
 - Load capacity 250 lbs.
 - Stem threaded
 - Mounting height 6 1/4"
 - Mount 1/2"-13 x 1 1/2" long
 - Shpg. 2 lbs.

4 3/4" x 1" Swivel Caster

w/ Swivel Lock
ITEM 1-3257
\$4.99



• New, swivel caster rubber tire on plastic wheel. Chemical, water, salt and oil resistant non-marking wheel. Plastic yoke with a 1 1/8" long metal insert where a bolt passes thru the yoke and swivel. Two position swivel lock, 180° offset. Shipped with the wheel unattached to yoke for easier installation.

- SPECIFICATIONS**
- Wheel size 4 3/4" dia. x 1"
 - Mounting bore 1/2" diam.
 - Load capacity 275 lbs.
 - Mounting height 6 1/2"
 - Size 5 7/8" x 6 1/2" x 2 1/4"
 - Shpg. 2 lbs.

3" x 1 1/4" Swivel Stem Caster

ITEM 1-3329
\$2.99



• New, FAULTLESS swivel stem caster. Solid hard rubber wheel. Zinc plated steel caster yoke.

- SPECIFICATIONS**
- Wheel size 3" x 1 1/4"
 - Load capacity 270 lbs.
 - Mounting height 3 3/4"
 - Stem threaded 1/2"-13 x 3/4"
 - Shpg. 1 1/2 lbs.

5" x 1 1/8" Swivel Stem Caster

ITEM 1-1591
\$6.95



• New. Ball bearing swivel stem caster with 5" diam. x 1 1/8" wide cushion rubber wheel. 7/16" diam. x 1 1/2" stem with retention ring. 150 lb. capacity. Shpg. 4 lbs.



5" x 1 5/16" Swivel Stem Caster w/ Wheel Lock

ITEM 1-3307
\$5.99

• New FAULTLESS swivel stem caster with wheel lock. Thermoplastic tire on black polypropylene wheel.

- SPECIFICATIONS**
- Wheel size 5" x 1 5/16"
 - Load capacity 125 lbs.
 - Mounting height 5 3/4"
 - Stem threaded 1/2"-13 x 1 1/2"
 - Shpg. 1 1/2 lbs.

3" x 1 1/4" Stem Swivel Caster

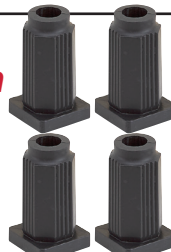
ITEM 1-2404
\$5.99



• New. Swivel stem caster with 3" diam. x 1 1/4" wide solid polypropylene wheel. 1"-12 diam. x 5 1/8" threaded stem. Working height 4 1/4" (floor to base of stem). Load capacity 100 lbs. Shpg. 5 lbs.

Caster Socket Set For 7/16" Stem Grip Ring Casters

ITEM 1-4860
\$1.19



• New, FAULTLESS part ER4983 square tubular grip ring caster socket. Polyethylene. Set of 4.

- SPECIFICATIONS**
- Caster Stem 7/16" dia.
 - Tubing size 18 gauge 1" OD, 0.902 ID
 - Minimum hole depth 1 7/8"
 - Size 1.125" square x 2"
 - Shpg. 1/4 lb.

Grip Ring Caster Sockets



• Brand new, use to mount grip ring casters with 7/16" dia. stem into steel tubing. Shpg. 1/10 lb.

| ITEM | Fits into | Length | Price |
|--------|--------------------------|--------|--------|
| 1-3667 | 1" OD 16 gauge tubing | 1 1/2" | \$.35 |
| 1-3668 | 3/4" OD 16 gauge tubing | 1 1/2" | \$1.50 |
| 1-5361 | 3/16" OD 16 gauge tubing | 1 3/8" | \$.39 |
| 1-3832 | 5/8" ID Square tubing | 2 1/8" | \$.50 |
| 1-4898 | Steel Corner Bracket | 1 5/8" | \$.59 |

5" x 1 1/2" Swivel Stem Caster

w/ Swivel & Wheel Lock
ITEM 1-3311
\$19.99



• New, FAULTLESS swivel stem caster. Originally intended for scaffold. Swivel and wheel lock. Solid hard rubber wheel. Zinc plated steel yoke.

- SPECIFICATIONS**
- Wheel size 5" x 1 1/2"
 - Load capacity 325 lbs.
 - Mounting height 6 1/4"
 - Stem friction grip stem mount 1" dia. x 2 1/2"
 - Shpg. 6 lbs.

4" x 1" Swivel Bolt-Hole Caster

ITEM 1-5158
\$1.99



• New, TENTE swivel bolt-hole caster. Double ball bearing in swivel head. Housing made of zinc-plated, pressed steel. Total lock brake locks both swivel and wheel when engaged. Supplied unassembled for easier mounting.

- SPECIFICATIONS**
- Wheel Diameter 4"
 - Wheel Width 1"
 - Load Capacity 165 lbs.
 - Mounting Height 4.75"
 - Brake Total Lock
 - Bolt Hole 0.43" center hole, Offset
 - Wheel Tread Material Polyurethane
 - Wheel Tread Color Grey
 - Caster Wheel Core Material Polypropylene
 - Caster Wheel Bearing Plain
 - Shpg. 1 lb.

5" Swivel Stem Caster

ITEM 1-2785
\$1.95



• New, MHS brand caster. Soft rubber over plastic wheel for quiet, non-marking operation. Ball bearings on swivel. Zinc plated steel construction.

- SPECIFICATIONS**
- 5" diam. x 1 1/16" w. wheel
 - 125 lb. load capacity
 - 7/16" diam. x 2" long stem with grip ring
 - 5/16" diam. axle
 - 3 15/16" swivel radius
 - 5 23/32" height (floor to base of stem)
 - Shpg. 1 1/2 lbs.

4" x 1" Grip Ring Caster

ITEM 1-3766
\$2.99



• New, JARVIS swivel grip ring stem caster. Solid polyolefin wheel. Plated steel caster yoke.

- SPECIFICATIONS**
- Wheel size 4" dia. x 1"
 - Load capacity 150 lbs.
 - Mounting height 4 3/8"
 - Stem grip ring 0.845" dia. x 2"
 - Shpg. 3 lbs.

3" x 1 3/16" Rigid Stem Caster

ITEM 1-3394
\$1.99



• New, FAULTLESS rigid stem caster. "DYNA-TRED II" thermoplastic rubber on polypropylene. Zinc plated caster yoke.

- SPECIFICATIONS**
- Wheel size 3" x 1 3/16"
 - Load capacity 90 lbs.
 - Mounting height 3 1/2"
 - Stem grip ring 7/16" dia. x 2"
 - Shpg. 1 lb.