



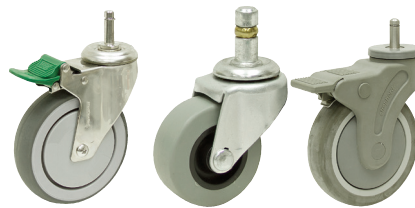
Grip Ring Stem Casters

New, mixed manufacturers grip ring stem casters.

* Brake

** Directional Lock

*** Brake and Directional Lock



Item	Wheel Size	Load Capacity	Wheel Material	Stem Size	Mtg. Height	Shpg.	Price
1-4611	2" x 3/4"	110	Thermo-plastic Rubber	7/16" x 1 7/16"	2 3/4"	1	\$3.95
1-4293	2" x 1 3/16"	80	Thermo-plastic Rubber	7/16" x 1"	2 5/8"	1/2	\$1.95
1-5123*	3" x 1 3/16"	100	Thermo-plastic Rubber	0.432" x 2"	3 5/8"	1 1/2	\$1.19
1-5292*	3" x 7/8"	115	Thermo-plastic Rubber	7/16" x 1 3/8"	3 7/8"	1 1/2	\$2.49
1-5095	3" x 1 5/16"	75	Polyolefin	7/16" x 1 1/2"	3 13/16"	3/4	\$1.49
1-5121*	3" x 1"	100	Polyamide	7/16" x 7/8"	3"	1 1/2	\$4.99
1-4936	3" x 1 1/4"	275	Thermo-plastic Rubber	7/16" x 1 3/8"	3 5/8"	2	\$2.95
1-4897	3" x 1 1/4"	270	Polypropylene	7/16" x 1 3/8"	3 5/8"	2	\$1.99
1-4324	4" x 1 5/16"	140	Polyolefin	7/16" x 1 1/2"	4 5/8"	1	\$1.95
1-4233*	4" x 1 5/16"	140	Polypropylene	7/16" x 1 1/2"	4 5/8"	1 1/2	\$3.95
1-4972 *	4" x 1 5/16"	110	Soft Rubber	7/16" x 1 3/8"	4 3/4"	2	\$2.95
1-5011	4" x 1 5/16"	150	Hard Rubber	7/16" x 2"	4 3/4"	2	\$2.95
1-5090 *	4" x 1"	140	Polyolefin	7/16" x 1 1/2"	4 3/4"	2	\$1.99
1-4973	4" x 1"	115	Thermo-plastic Rubber	7/16" x 1 3/8"	4 5/8"	2	\$1.95
1-5410*	4" x 1"	115	Thermo-plastic Rubber	7/16" x 1 1/2"	4 3/4"	2	\$2.95
1-4232*	5" x 1 5/16"	125	Thermo-plastic Rubber	7/16" x 1 1/2"	5 5/8"	1 1/2	\$3.95
1-4319	5" x 1 5/16"	150	Polyolefin	7/16" x 1 1/2"	5 5/8"	1	\$2.95
1-4316*	5" x 1 5/16"	150	Polyolefin	7/16" x 1 1/2"	5 5/8"	1 1/2	\$3.95
1-5017	5" x 1"	125	Thermo-plastic Rubber	7/16" x 1 1/2"	5 9/16"	3	\$1.99
1-4862 *	5" x 1 3/16"	350	Polyurethane	1 3/8" x 2 1/4"	6"	4	\$3.99
1-4922	5" x 1 3/16"	300	Polyurethane	7/16" x 1 3/8"	5 3/4"	2	\$5.99
1-4297***	5" x 1 1/4"	280	Thermo-plastic Rubber	7/16" x 1 1/4"	6 3/8"	2	\$5.95
1-4296*	5" x 1 1/4"	315	Urethane	7/16" x 1 1/4"	6 1/8"	3	\$4.95



Faultless Grip Ring Stem Casters

• New, FAULTLESS grip ring stem casters. All have ball bearing swivels. Choose from a wide variety of wheel construction, yoke material and with or without brakes.

• Dual brakes lock both the swivel and wheel

• Dyna Tred II and TPR are thermoplastic rubber on polypropylene wheel



ITEM	Dia.	Wheel Width	Dia.	Stem Length	Stem Construction	Wheel Brake	Frame	Mounting Height	Load Rating	Shpg.	Price
1-3353	3"	1 3/16"	7/16"	1 3/8"	Dyna Tred II Gray	No	Zinc Plated	3 1/2"	90 lbs.	1 lb.	\$1.99
1-3306	3"	1 1/4"	7/16"	1 3/8"	Solid hard rubber	Yes	Zinc Plated	3 3/4"	270 lbs.	2 lbs.	\$3.99
1-3356	3"	1 1/4"	7/16"	1 3/8"	Soft rubber on plastic wheel	Yes	Black Oxide	3 3/4"	175 lbs.	1 1/2 lbs.	\$2.99
1-3355	3"	1 1/4"	7/16"	1 3/8"	Solid Polypropylene	Yes	Zinc Plated	3 3/4"	270 lbs.	1 1/2 lbs.	\$3.99
1-3350	3"	1 1/4"	7/16"	1 3/8"	Solid Polypropylene	No	Zinc Plated	3 3/4"	270 lbs.	1 1/2 lbs.	\$2.99
1-3348	3"	1 1/4"	7/16"	1 3/8"	Solid Soft Rubber	No	Zinc Plated	3 3/4"	175 lbs.	1 1/2 lbs.	\$1.99
1-3374	3"	1 1/4"	7/16"	1 3/8"	Dyna Tred TPR Black	Yes	Black Oxide	3 3/4"	180 lbs.	1 1/2 lbs.	\$2.99
1-3368	3"	1 1/4"	7/16"	1 3/8"	Dyna Tred TPR Gray	Yes	Zinc Plated	3 3/4"	180 lbs.	1 1/2 lbs.	\$2.99
1-3401	3"	1 1/4"	7/16"	1 3/8"	Solid Polypropylene	Yes	Black Oxide	3 1/2"	270 lbs.	1 1/2 lbs.	\$2.99
1-3388	3"	1 1/4"	7/16"	1 3/8"	Solid Soft Rubber	Yes	Zinc Plated	3 1/2"	175 lbs.	1 1/2 lbs.	\$2.99
1-3386	3"	1 1/4"	7/16"	1 3/8"	Solid Soft Rubber	Yes	Zinc Plated	3 1/2"	175 lbs.	1 1/2 lbs.	\$2.99
1-3362	4"	1 5/16"	7/16"	1 3/8"	Dyna Tred II Gray	Yes	Zinc Plated	4 5/8"	115 lbs.	1 1/2 lbs.	\$3.99
1-3361	4"	1 5/16"	7/16"	1 3/8"	Dyna Tred II Black	Yes	Zinc Plated	4 5/8"	115 lbs.	1 1/2 lbs.	\$4.99
1-3366	4"	1 5/16"	7/16"	1 3/8"	Solid Soft Rubber	No	Zinc Plated	4 5/8"	115 lbs.	1 1/2 lbs.	\$2.99
1-3367	4"	1 5/16"	7/16"	2"	Dyna Tred TPR Gray	Yes	Zinc Plated	4 5/8"	115 lbs.	1 1/2 lbs.	\$3.99
1-3349	5"	1 5/16"	7/16"	1 3/8"	Dyna Tred II Black	No	Zinc Plated	5 5/8"	125 lbs.	1 1/2 lbs.	\$2.99
1-3360	5"	1 5/16"	7/16"	1 3/8"	Dyna Tred II Gray	Yes	Zinc Plated	5 5/8"	125 lbs.	1 1/2 lbs.	\$3.99
1-3385	5"	1 5/16"	7/16"	1 3/8"	Dyna Tred TPR Gray	Yes	Zinc Plated	5 7/8"	125 lbs.	1 1/2 lbs.	\$3.99
1-3387	5"	1 5/16"	7/16"	1 3/8"	Dyna Tred TPR Black	Yes	Zinc Plated	5 3/4"	125 lbs.	1 1/2 lbs.	\$3.99