

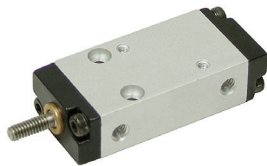
Humphrey Multi-Mount Air Cylinders

• New, HUMPHREY. Multi-mount style air cylinders. Aluminum construction, rated to 100 PSI working pressure. 10-32 ports.

Bore - Rod Dimensions

1/4" = 0.118" 3/8" = 0.197" 5/8" = 0.236"

Single Acting Push Only



ITEM	Bore	Stroke	R. Lgth.	Shpg.	Price
4-10621	1/4"	1/4"	2.14"	1/2 lb.	\$5.95
4-10622	3/8"	1/4"	2.337"	3/4 lb.	\$5.95
4-10633	3/8"	1/2"	2.587"	3/4 lb.	\$5.95
4-10640	5/8"	1/4"	2.533"	1/2 lb.	\$6.95
4-10647	5/8"	1/2"	2.783"	3/4 lb.	\$6.95

Double Acting

ITEM	Bore	Stroke	R. Lgth.	Shpg.	Price
4-10618	1/4"	1/2"	2.193"	1/2 lb.	\$5.95
4-10613	1/4"	3/4"	2.443"	1/2 lb.	\$5.95
4-10624	3/8"	1/2"	2.39"	3/4 lb.	\$5.95
4-10631	3/8"	3/4"	2.64"	1/2 lb.	\$5.95
4-10637	5/8"	3/4"	2.837"	1 lb.	\$7.99

Double Acting Double Rod



ITEM	Bore	Stroke	R. Lgth.	Shpg.	Price
4-10627	3/8"	1/2"	3.4375"	1/4 lb.	\$16.95
4-10630	3/8"	3/4"	3.902"	1/2 lb.	\$8.95
4-10649	5/8"	1/2"	3.677"	3/4 lb.	\$9.95
4-10636	5/8"	3/4"	4.177"	3/4 lb.	\$9.95

Humphrey Pen Air Cylinders

• New, HUMPHREY. Pen style air cylinders. Aluminum construction, 100 PSI working pressure. All have 10-32 ports. Shpg. 1/4 lb.

Bore - Rod Dimensions

3/8" = 0.156" 5/8" = 0.197"



Double Acting - Nose Mount - Base Clevis

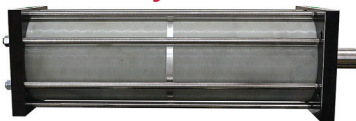
ITEM	Bore	Stroke	R. Lgth.	Price
4-14879	3/8"	1/4"	3.4375"	\$7.95



Double Acting - Nose Mount Threaded Base

ITEM	Bore	Stroke	R. Lgth.	Price
4-14474	5/8"	1/4"	3.625"	\$5.95
4-11119	5/8"	1/2"	3.875"	\$6.95

10" x 14" x 2" DA Air Cylinder



ITEM 4-1953 \$399.95

• New. FABCO AIR Double acting air cylinder. Premium multi-stage air cylinder equipped with stainless rod, aluminum ends, and atmospheric vents on sides of cylinder tube. Cylinder has two pistons to extend for additional force and uses one of the pistons for retract. Front flange mount with four, 26mm bolt holes on 6.5" x 13" bolt centers. Cylinder's external rod is solid and internal rod has air passages for piston stages. Number on cylinder is MPS0015178.

SPECIFICATIONS

- Double Acting
- Bore x Stroke 10" x 14"
- Gland Retainer Tie-rod
- Pressure 100 PSI
- Extend Force 15,708 lbs.
- Rod Dia. 2"
- Ports 1/2" NPT
- Retracted/Overall Length 40.0625"
- Gland Face to Rod Pin Center 4.125"
- Rod End Tapped
- Thread size-Pitch 1 1/2"-12
- Thread Depth 1.75"
- Base End Flat
- Shpg. 196 lbs.

Truck freight only.

12 mm x 2 3/4" DA Air Cylinder



ITEM 4-1630 \$5.95

• New, FESTO Model DO-12-74-PP-SA air cylinder. Stainless steel tubing with aluminum end-caps. 10-32 ports with adapters to 1/16" hosebarbs. Rod end threaded 4 mm, 0.70" pitch. Base end-cap tapped 4 mm, 0.70" pitch. Cushions at both ends of stroke.

SPECIFICATIONS

- Double acting
- Bore 12 mm (0.472")
- Stroke 2 3/4"
- Rod dia. 4 mm (0.156")
- Press. 8 Bar (116 PSI) max
- Ports 1/16" hosebarbs
- Retracted lgth. 6 3/4" end-to-end
- Shpg. 1 lb.

3/4" Bore Air Cylinders

• Used BIMBA stainless steel. Extend port in base, retract port in rod end.

SPECIFICATIONS

- Double acting
- Bore 3/4"
- PSI max. 250
- Rod diam. 1/4"
- Ports 1/8" NPT
- Threaded rod end 1/4"-28 x 1/2" long
- Nose mount threaded 5/8"-18
- Flat base 0.81" O.D.
- Shpg. 1 lb.



ITEM 4-1761-A \$4.95

• P/N 53E743. Stroke 3/4", retracted lgth. 5" (rod end to base end).



ITEM 4-1761-B \$4.95

• P/N 53E712. Stroke 1 5/16", retracted lgth. 5 3/8" (rod end to base end).

7/16" x 1" Double Ended



ITEM 4-1705 \$5.95

• New, BIMBA. Nose mount each end. Spring loaded to one end, only moves to one side.

SPECIFICATIONS

- Double acting w/spring return
- Bore/stroke 7/16" x 1"
- 250 PSI
- Ports 10-32
- Rod diam. 3/16" w/10-32 UNF threaded ends
- Mtg. threads 3/8"-24
- Mtg. distance 4 1/4"
- Overall length 8 1/4"
- Shpg. 1/2 lb.

Double Air Cylinder



ITEM 4-1419 \$18.99

• New, BIMBA. Two independent, double-acting cylinders connected in the middle. Four ports, two in the middle, one in each end. Both ends of body threaded 5/8"-18 RH x 3/8" long. Rod ends threaded 5/16"-24 RH x 1/2" long. Retracted length 14 7/8" from rod end to rod end.

SPECIFICATIONS

- Double acting, double cyl.
- Pressure 250 PSI max.
- Bore 1 1/16"
- Strokes 3" and 4"
- Rods dia. 5/16"
- Ports 1/8" NPT
- Mount threaded ends
- Shpg. 2 lbs.

2" x 3.5" Double Acting Air Cylinder



ITEM 4-9072 \$39.95

• New SMC model NCGCN50-0350 double acting air cylinder. 2" of rod exposed when fully retracted. Bronze bushing in base mount.

SPECIFICATIONS

- Double Acting
- Bore 2"
- Stroke 3.5"
- Rod Dia 0.787"
- Rod Thread 1/2"-20 x 7/8"
- Pressure 145 PSI max.
- Ports 1/4" NPT
- Retracted Length 10" center of base pin hole to end of rod
- Mount
- Body 4 5/16"-24 tapped holes on face 1.26" sq.
- Base 3/8" dia. pin hole in tang, 3/4" wide
- Shpg. 3 lbs.

1/4 NPT Mini Air Regulator w/gauge



ITEM 4-9094 \$5.95

• New, Campbell Hausfeld part number RE206901AV. Inline air pressure regulator with gauge.

SPECIFICATIONS

- Inlet Pressure 200 PSI max.
- Outlet Pressure Range 0-135 PSI
- Ports 1/4" NPT
- Gauge Port 1/8" NPT
- Size 3 5/8" x 1 1/2" x 2 3/4"
- Shpg. 1/2 lbs.

24 VAC Solenoid Valve



ITEM 20-1311 \$9.99

• New, ASCO. Operates on 24 VAC, 6 watts. Ports 1/8" NPT. Pressure ratings air 275 PSI, water 200 PSI, oil 150 PSI. Normally open two ways. Brass body. Size 3 3/4" x 2" x 1 1/2". Shpg. 1 1/2 lbs.