

24 VDC Diaphragm Pump

ITEM 2-1444
\$19.95

• New, SHURFLO model 100-030-20 positive displacement wobbler pump. Ryton and EPDM construction. Not self priming. Wire leads. Rubber vibration damper mounting feet.

SPECIFICATIONS

- Voltage 24 VDC
- Amperage 1.5 Amps
- Shut-Off Pressure 15 PSI
- Flow Rates
- 1 GPM @ open flow
- 0.8 GPM @ 5 PSI
- 0.53 GPM @ 10 PSI
- 0.10 GPM @ 15 PSI
- Max Fluid Temp 130°
- Ports 3/8" Hosebarb
- Duty Intermittent
- Mount 2 holes 2" apart
- Size 3 1/2" x 2 5/8" x 2"
- Shpg. 1 lb.



Simer Water Pump

• New, SIMER. Flexible impeller pump. Use to pump water, brine solutions and light lubricating oils.

WARNING: This pump should never be used to pump flammable fluids! Wired with a 4 ft. power cord with on/off switch and alligator clips. Permanent magnet motor. Includes two garden hose to 1/2" hosebarb adapters and instructions.

ITEM 2-1264

SPECIFICATIONS

- 1,140 liters/hour (301 GPH)
- 24 VDC
- Self-priming to 9 feet
- 20 PSI max.
- Max 118°F
- Male garden hose thread ports
- Base mount
- Overall size 7 1/8" x 4 1/2" x 4 1/2"
- Shpg. 7 lb.

\$39.95



Mini Fountain Pump

• New, OASE. Submersible fountain pump

for indoor or outdoor use. Adjustable output flow. Integral 18/3 cord is water resistant with three prong plug. Two suction cups on bottom to hold pump in place. UL Listed. Made in Italy.

ITEM 2-1255

SPECIFICATIONS

- 5 1/2 ft. long cord
- Model SP40G
- 4 watts
- 115 VAC
- 1/2" O.D. outlet tube
- 30-55 GPH
- Size 1 7/8" x 1 5/8" x 1 3/4"
- 18" max. head
- Shpg. 1 lb.

\$3.99

12 VDC Submersible Pump



• New. Submersible, brushless impeller pump. Can be mounted in or under tank. Sold with 115 VAC to 12 VDC adapter with on/off switch (needs alteration to mate with leads from pump). Pump is not self-priming.

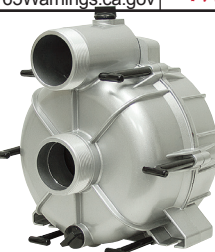
ITEM 2-1443

\$13.95

SPECIFICATIONS

- Voltage 12 VDC
- Amperage 0.36 Amps @ 12 VDC, Dry
- Flow 6 GPM @ 0' head pressure
- Max Head Pressure 6.5'
- Input 17mm (0.669") O.D. hose
- Output 12mm (0.472") O.D. hose
- Leads 6"
- Size 3 3/4" x 2 1/8" x 1 3/4"
- Shpg. 1 lb.

3" Trash Pump Head



ITEM 2-1438

• New, HYPRO 3" aluminum trash pump head. Simply add your own 6.5 HP engine with 3/4" keyed crankshaft. Removable front cover allows easy cleanout. Cast iron volute and impeller for long life. Will handle solids up to 1" dia. Includes intake strainer with hose barb connector. EPDM mechanical shaft seal and inlet valve to retain prime after initial setup.

\$119.95

SPECIFICATIONS

- HP required 6.5 minimum
- Ports 3" NPT
- Input shaft required
- 3/4" dia. keyed
- Max. head 106 ft. (46 PSI)
- Max. suction lift 23 ft.
- Mtg. pattern to engine
- 4 holes on 3 5/8" bolt circle
- Furnished with 5/16"-24 bolts
- Base mount slotted 9 1/2" c/c
- Size 12" x 10" x 13"
- Shpg. 40 lbs.

Flow Rate at Ft. of Head (PSI)

Flow Rate	Ft of Head (PSI)
272 GPM	at 12 Ft. (5 PSI)
179 GPM	at 58 Ft. (25 PSI)
50 GPM	at 93 Ft. (40 PSI)

Fuel Shutoff Valve



ITEM 20-1341

\$9.99

• New, military surplus fuel shut-off valve.

SPECIFICATIONS

- Ports 1/2" NPT
- Shaft 1/2" O.D. x 1 3/16"
- w/crosshole & screw-driver slot
- Mount 2 bolts 1 1/4" ctrs.
- Size 2 5/8" x 2 3/8" x 2"
- Shpg. 1/2 lb.

12 VDC Diaphragm Pump



ITEM 2-1455

\$19.99

• New, DELAVAN automatic demand diaphragm pump. Ideal for spot sprayers or as replacement on existing equipment. Santoprene diaphragm and Viton valves. Automatic shut off switch set to 40 PSI. Pump turns on at 25 PSI. Self priming to 4 foot suction lift. Can run dry intermittently without damage. Wire leads. Rubber vibration damper mounting feet.

SPECIFICATIONS

- Voltage 12 VDC
- Amperage 2.6 Amps
- Shut-Off Pressure 40 PSI
- Flow Rates
- 1 GPM @ open flow
- 0.85 GPM @ 10 PSI
- 0.71 GPM @ 20 PSI
- 0.61 GPM @ 30 PSI
- 0.42 GPM @ 40 PSI
- Ports 3/8" Hosebarb QA port adapters
- Duty Intermittent
- Temperature 110°F max.
- Mount Four bolt on 3.19" x 2.25" pattern
- Size 7" x 3 5/8" x 2 5/8"
- Shpg. 2 lbs.

Inline Strainer



ITEM 20-1237-30

\$7.95

• New. Polypropylene line strainer. Brass captive nuts for mounting. Threaded bowl.

SPECIFICATIONS

- Ports 1/2" NPT
- Mesh size 30
- Shpg. 1 lb.

1" Bee Ball Valve



ITEM 20-1627

\$7.99

• New, Bee Valve bolted construction polypropylene ball valve. Mounting plate for valve actuator (not included).

SPECIFICATIONS

- Ports 1" NPT
- Pressure 100 PSI @ 75 degrees
- Size 3 3/8" x 2 1/2" x 3 1/4"
- Shpg. 1 lbs.

Compact 12 VDC Pump



ITEM 2-1413

\$4.95

• Used small 12 VDC centrifugal pump. Non-submersible. Auxiliary 3/16" I.D. line on pump intake. Plastic construction.

SPECIFICATIONS

- Voltage 12 VDC
- Flow 1 GPM
- Inlet 3/16" hosebarb
- Outlet 1/4" hosebarb
- Mount 2 holes 0.55" c/c
- Size 3 1/8" x 1 5/8" x 2 1/8"
- Shpg. 1 lb.

Tuthill Manual Transfer Pump



ITEM 2-1350

\$19.99

• New, TUTHILL Series 20 hand lever piston pump for pumping fluid into a container. Polypropylene housing, BUNA N seals. Economical manual transfer pump ideal for use on barrels, drums and storage tanks. Anti-drip nozzle, check valve and 360° locking ring. Telescoping suction pipe fits up to 36" high container. Compatible with water, gear oils, engine oils, paraffin, fertilizers, mild acids, anti-freeze, hydraulic oils, diesel, degreasers, herbicides and pesticides. Not for use with gasoline, ethanol or methanol.

SPECIFICATIONS

- Flow 11 fl. oz. per stroke
- Viscosity SAE 90 max.
- Bung adapter 2" NPS
- Inlet 1" NPT
- Outlet nozzle w/strainer
- Size 9 1/4" x 3 1/2" x 12"
- Shpg. 5 lbs.

3/4" Sweat Ball Valve



ITEM 20-1622

\$3.99

• New, full port bronze ball valve. Chrome plated bronze ball.

SPECIFICATIONS

- Ports 3/4" for copper pipe
- Pressure (WOG) 600 PSI
- Size 2 5/8" x 1 1/2" x 2 1/4"
- Shpg. 1 lb.

12 VDC Centrifugal Pump



ITEM 2-1155

\$253.90

• Brand new HYPRO "Aqua-Tiger" Bronze centrifugal pump. Use for ag chemical transfer, live well aeration, circulation, etc. Permanent magnet motor.

SPECIFICATIONS

- 12 VDC, 5.5 amps
- Max. flow 19 GPM
- Max. 7 PSI
- 140° F max.
- Ports 3/4" NPT
- Size 7" x 4 1/2" x 4"
- Shpg. 8 lbs.