

Shaft Mount Gear Reducers

- Brand new, WORLDWIDE Electric Corp. shaft mount reducers. Service class III. Cast iron housing, high grade case hardened steel gears and shafts. Double lip seals. Metal reinforced double lips, spring loaded oil seals. Size 2 gear reducers have ball bearings, Size 3-6 gear reducers have tapered roller bearings. Torque arm included. Interchangeable with Dodge, Hub City, Edison and Brown-ing shaft mount reducers.



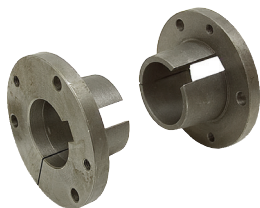
Find tapered bushings and other accessories in the charts below.

Tapered bushing kit sold separately - see chart below for output bore and appropriate ITEM number.



Performance Specifications

Reducer Size	ITEM	Ratio	Input HP	Output RPM	Torque (in-lbs.)	Min. Drive Pulley Dia.	Input Shaft Dia. x Lgth. x Keyway	Size	Shpg.	Price
2	13-2-SMR-15	15:1	5	104-140	2899-2154	3.0"	1 1/8" x 3 9/16" x 1/4"	8 3/8" x 11 7/16" x 5 7/8"	71 lbs.	\$ 379.95
	13-2-SMR-25	25:1	3	58-85	3119-2128	3.0"	1 1/8" x 3 9/16" x 1/4"	8 3/8" x 11 7/16" x 5 7/8"	71 lbs.	\$ 379.95
3	13-3-SMR-15	15:1	7.5	94-140	4811-3230	4.0"	1 1/4" x 4 5/16" x 1/4"	9 1/4" x 12 7/8" x 7 9/16"	94 lbs.	\$ 674.85
	13-3-SMR-25	25:1	5	57-85	5290-3547	4.0"	1 1/4" x 4 5/16" x 1/4"	9 1/4" x 12 7/8" x 7 9/16"	93 lbs.	\$ 674.85
4	13-4-SMR-15	15:1	10	79-141	7633-4277	4.6"	1 7/16" x 5 9/16" x 3/8"	10 3/8" x 15 1/8" x 8 3/16"	175 lbs.	\$ 912.80
	13-4-SMR-25	25:1	7.5	57-85	7934-5321	4.6"	1 7/16" x 5 9/16" x 3/8"	10 3/8" x 15 1/8" x 8 3/16"	170 lbs.	\$ 912.80
5	13-5-SMR-15	15:1	20	115-125	10487-9648	5.4"	1 15/16" x 5 3/4" x 1/2"	13 1/8" x 18 5/16" x 8 13/16"	221 lbs.	\$1370.80
	13-5-SMR-25	25:1	10	46-78	13109-7731	5.4"	1 15/16" x 5 3/4" x 1/2"	13 1/8" x 18 5/16" x 8 13/16"	215 lbs.	\$1370.80
6	13-6-SMR-15	15:1	30	99-125	18276-14472	6.2"	2 3/16" x 6 1/16" x 1/2"	15 1/8" x 21 5/16" x 9 5/8"	345 lbs.	\$1791.15
	13-6-SMR-25	25:1	20	58-70	20794-17229	6.2"	2 3/16" x 6 1/16" x 1/2"	15 1/8" x 21 5/16" x 9 5/8"	333 lbs.	\$1791.15



Tapered Bushings

- Twin tapered bushing kit for shaft mount reducers. Includes two bushings, bolts and full length shaft key.

Order bushing by gear reducer size and diameter of shaft it will be mounted on.

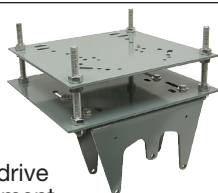
Size 2		Size 3		Size 4		Size 5		Size 6	
\$57.85 each Shpg. 5 lbs.		\$71.15 each Shpg. 6 lbs.		\$98.10 each Shpg. 8 lbs.		\$135.10 each Shpg. 10 lbs.		\$175.75 each Shpg. 13 lbs.	
ITEM	Dia.	ITEM	Dia.	ITEM	Dia.	ITEM	Dia.	ITEM	Dia.
13-2-TBK-1516	1 5/16"	13-3-TBK-11116	1 11/16"	13-4-TBK-11516	1 15/16"	13-5-TBK-2316	2 3/16"	13-6-TBK-212	2 1/2"
13-2-TBK-138	1 3/8"	13-3-TBK-134	1 3/4"	13-4-TBK-2	2"	13-5-TBK-214	2 1/4"	13-6-TBK-21116	2 11/16"
13-2-TBK-1716	1 7/16"	13-3-TBK-178	1 7/8"	13-4-TBK-218	2 1/8"	13-5-TBK-2716	2 7/16"	13-6-TBK-278	2 7/8"
13-2-TBK-112	1 1/2"	13-3-TBK-11516	1 15/16"	13-4-TBK-2316	2 3/16"	13-5-TBK-212	2 1/2"	13-6-TBK-21516	2 15/16"
13-2-TBK-158	1 5/8"	13-3-TBK-2	2"	13-4-TBK-214	2 1/4"	13-5-TBK-21116	2 11/16"	13-6-TBK-3	3"
13-2-TBK-11116	1 11/16"	13-3-TBK-2316	2 3/16"	13-4-TBK-2716	2 7/16"	13-5-TBK-21516	2 15/16"	13-6-TBK-3716	3 7/16"
13-2-TBK-134	1 3/4"								
13-2-TBK-11516	1 15/16"								

Select accessories to match reducer size.

Size	ITEM	Motor Frame	Shpg.	Price	ITEM	Shpg.	Price	ITEM	Shpg.	Price
2	13-2-MM	56-215T	34 lbs.	\$167.30	13-2-BSK	2 lbs.	\$92.35	13-2-BG	30 lbs.	\$167.20
3	13-3-MM	56-215T	36 lbs.	\$172.10	13-3-BSK	2 lbs.	\$118.15	13-3-BG	38 lbs.	\$190.00
4	13-4-MM	143-286T	79 lbs.	\$268.10	13-4-BSK	2 lbs.	\$118.15	13-4-BG	44 lbs.	\$217.95
5	13-5-MM	143-286T	82 lbs.	\$268.10	13-5-BSK	3 lbs.	\$140.35	13-5-BG	48 lbs.	\$240.35
6	13-6-MM	143-286T	107 lbs.	\$360.55	13-6-BSK	4 lbs.	\$265.90	13-6-BG	61 lbs.	\$273.80

Motor Mount

- Heavy gauge painted steel construction for NEMA frame motors. Adjustable top plate for drive belt tensioning and alignment.



Backstop Assembly

- Ensures smooth forward operation of conveyor with no back slip.



Belt Guard

- Heavy gauge painted all steel construction. Screened face.

