

20 GPM Single Selector Valves



\$78.65 each

• Brand new PRINCE. Two position two-way selector valves. Directs pump flow to select between two circuits. Also use to select between two different single acting hydraulic cylinders from one valve.

SPECIFICATIONS

- Flow 20 GPM
- PSI 2500
- Two position
- Size 5 1/8" x 3 1/4" x 2 1/4"
- Shpg. 6 lbs.

ITEM	Model	Ports
9-6133	SS-1A1D	3/8" NPT
9-6134	SS-2A1D	1/2" NPT



40 GPM Single Selector Valves

\$78.65 each

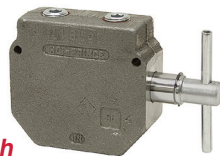
• Brand new, CROSS high flow, single selector valves. Use to switch pump flow from one circuit to a different circuit.

SPECIFICATIONS

- Flow 40 GPM max.
- Mount 2 holes on 3" ctrs.
- Size 6 1/8" x 4 1/8" x 2 5/8"
- Shpg. 8 lbs.

ITEM	Model	Ports	PSI
9-7897	VS4BKLF7	1" NPT	2500
9-7898	VS4BKLF9	SAE 16	3000

30 GPM Single Selector Valves



\$102.40 each

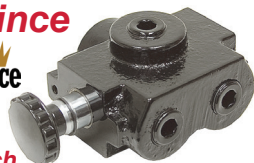
• Brand new, PRINCE single selector valves. Use to switch pump flow from one circuit to a different circuit.

SPECIFICATIONS

- Flow 30 GPM max.
- Pressure 3000 PSI max.
- Mnt. 2 holes on 3 7/8" ctrs.
- Size 4 5/8" x 4 1/8" x 1 3/4"
- Shpg. 9 lbs.

ITEM	Model	Ports
9-7895	RD-950	1/2" NPT
9-7896	RD-975	3/4" NPT

20 GPM Prince Float Valves



\$78.65 each

• Brand new, PRINCE float valves. Use with standard 4 way, 3 position valves to provide a float or free wheeling position. Connects inlet to both outlets when spool is pushed in, blocks both outlets when spool is pulled out.

SPECIFICATIONS

- Flow 20 GPM max.
- Pressure 2500 PSI max.
- Mnt. 2 holes on 2 1/8" ctrs.
- Size 3 3/4" x 3 1/4" x 2 3/8"
- Shpg. 6 lbs.

ITEM	Model	Ports
9-7899	SS-2B1D	1/2" NPT
9-7900	SS-3B1D	SAE 8



9-7738 Series

Individual Circuit Selector

• Each circuit has its own coil that is energized to allow a directional control valve to operate the circuit selected. When used with "variable flow" or "closed center" systems valve can be used as a selector, or power both solenoids to direct fluid to both circuits at the same time. A SPDT-CO switch or two momentary pushbutton switches are required to operate selector valve.

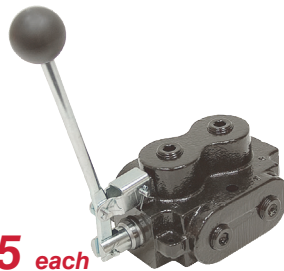
ITEM	Flow	Ports	Amps	Size	Shpg.	Price
9-5117	15	SAE 8	1.67	4 1/2" x 2 1/2" x 6 1/2"	7 lbs.	\$221.65
9-7738	20	SAE 12	2.6	5 1/4" x 3" x 8 7/8"	15 lbs.	\$360.20

Primary Circuit Selector

• Primary type allows a directional control valve to operate one circuit with no power to selector valve. To select the other circuit, both solenoids are powered. This operation allows selection to be done by a SPST pushbutton or toggle switch. Ideal for operating a "thumb" on a loader bucket.

ITEM	Flow	Ports	Amps	Size	Shpg.	Price
9-5117-A	6	SAE 8	1.67	4 1/2" x 2 1/2" x 6 1/2"	7 lbs.	\$222.30
9-7738-A	15	SAE 12	2.6	5 1/4" x 3" x 8 7/8"	15 lbs.	\$353.75

Double Selector Valves



\$128.25 each

• Brand new PRINCE. Allows one control valve to operate two different double acting cylinders or reversible motors. Also use to select between two different circuits from one hydraulic source. 2500 PSI. Shpg. 13 lbs.

ITEM	GPM	Ports
9-4128	20	1/2" NPT
9-6131	30	3/4" NPT
9-6132	40	1" NPT

Double Selector Valve



ITEM 9-12295 \$143.30

• New CROSS allows one control valve to operate two different double acting cylinders or reversible motors. Also use to select between two different circuits from one hydraulic source. Detent on spool holds spool securely in either position.

SPECIFICATIONS

- Model SD4BADA3
- Flow 40 GPM
- Pressure 5000 PSI
- Positions two detented
- Ports SAE 10 (7/8-14 ORB)
- Size 8" x 4 1/4" x 3 1/4"
- Shpg 11 lbs.

Ordering Information & Shipping Rates on pages 106 - 107
Order Blank on page 108

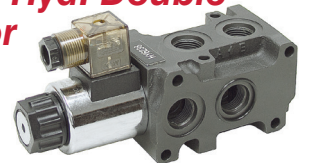
12 VDC Solenoid Operated Double Selector Valves

• Brand new. Dual 12 volt DC solenoid operated double selector/multiplier valve. Use to expand the number of tractor remotes or operate two different circuits consisting of cylinders or motors from a single directional valve. Rated 3000 PSI. Terminal connections are 1/4" spade. Choose between individual or primary circuit types with two different rated flow rates.



9-5117 Series

12 VDC Hyd. Double Selector Valve



• Brand new, DYNAMIC Model DSV 12 volt DC solenoid operated double selector valve. Allows one directional valve to operate two independent cylinders. Energizing coil shifts from cylinder 1 to cylinder 2. Ideal for adding a "thumb" to buckets on loaders. Furnished with O-ring so they can be stacked together for even more function choices. Includes Hirschmann wiring connector.

SPECIFICATIONS

- Pressure 3600 PSI max
- Connector Hirschmann
- Coil voltage 12 VDC
- Size 7 3/4" x 2 3/4" x 3"
- Current 2.5 amps
- Shpg. 10 lbs.

ITEM 9-8602 \$159.99

13.2 GPM SAE 8 Ports

ITEM 9-12678 \$189.99

24 GPM SAE 10 Ports

12 VDC Solenoid Selector Valve



ITEM 9-7986 \$163.95

• Brand new HYDRAFORCE. Three port 12 volt DC solenoid operated selector valve. Use to switch pump flow from one circuit to a different circuit.

SPECIFICATIONS

- Flow 15 GPM
- Voltage 12 volt DC
- Amperage 2.8 amps
- Terminal connection wire leads
- Pressure 3500 PSI
- Ports SAE 12
- Size 4" x 2 1/4" x 8"
- Shpg. 8 lbs.