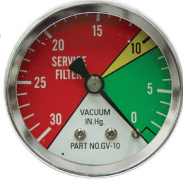


**Optional
1/8" NPT Condition
Indicator Gauge**



ITEM 9-4544-G 
\$9.70

• For use on ITEMS 9-077, 9-7295, 9-4544 suction line filters only. **Shpg.** 1/2 lb.

Zinga Spin-On Filter Assemblies 

• Brand new, ZINGA spin-on type element. Full flow filtering up to bypass cracking point, partial filtering beyond. 250° F max. Suction line filters have 1/8" NPT port for optional condition indicator.



Filter Assemblies (Head and Element)										Replacement Elements	
Ports	ITEM	Application	GPM	Max. Bypass Micron			Size	Shpg.	Price	ITEM	Price
				PSI	PSI	Rating					
3/4" NPT	9-059	Return Line	20	100	25	10	7 1/2" x 3 3/4" x 3 1/2"	3 lbs.	\$16.95	9-059-10	\$7.70
	9-077	Suction Line	9	100	5	25	7 1/2" x 3 3/4" x 3 1/2"	3 lbs.	\$17.95	9-059-25	\$7.70
1 1/4" NPT	9-4543	Return Line	70	200	25	10	5 9/8" diam. x 9 9/8"	6 lbs.	\$29.95	9-4543-10	\$16.95
	9-4544	Suction Line	25	200	5	25	5 9/8" diam. x 9 9/8"	6 lbs.	\$29.95	9-4543-25	\$16.95
1 1/2" NPT	9-7294	Return Line	70	200	25	10	5 1/8" diam. x 13 7/8"	6 lbs.	\$43.95	9-7294-10	\$18.70
	9-7295	Suction Line	25	200	5	25	5 1/8" diam. x 13 7/8"	6 lbs.	\$43.95	9-7294-25	\$18.70

**1 Quart
Hydrostatic
Tank
w/Filter**



ITEM 9-8944

\$69.99

• New, extruded aluminum with deep fins for cooling. Use as expansion tank/cooler on dual hydrostatic pump mowers. Connects to case drain and charge pump ports on hydrostatic pumps. Fill port on top. Internal markings for hot and cold oil levels. Furnished with 90 degree adapters to 3/8" ID Push-Lok hose.

SPECIFICATIONS

- Oil Capacity 1 quart
- Filter Rating 10 micron
- Ports (4) SAE 6
- Size 5" x 5" x 12 1/2"
- Shpg. 8 lbs.

**High Pressure Inline
Filter** 



ITEM 9-7292
\$205.90

• Brand new, ZINGA series HP3000 high pressure inline filter. Ductile iron housing. Buna-N Seals. Visual differential pressure indicator.

SPECIFICATIONS

- 10 micron filter
- 60 GPM
- SAE 12 ports
- 3000 PSI max.
- By-pass valve setting 50 PSI
- Size 3" diam. x 9 3/4"
- Shpg. 11 lbs.

Replacement Filter Element

ITEM 9-7292-10  10 micron **\$15.00**

**Inline High
Press. Filter**



ITEM 9-7297 
\$84.95

• Brand new, ZINGA Series CF-90 high pressure filter. Designed for use as final filter to protect control valves, not as total system filter.

SPECIFICATIONS

- 12 GPM
- 10 micron
- SAE 8 ports
- 3000 PSI max.
- By-pass valve setting 50 PSI
- Size 3 1/2" x 2 1/2" x 2"
- Shpg. 3 lbs.

Replacement Filter Element

ITEM 9-7297-10  10 micron **\$34.75**

**120 GPM
Return
Line Filter
Assembly**



ITEM 9-12498
\$49.95

• New, ZINGA MF series dual element filter head. Aluminum construction. Single wire electric differential pressure indicator.

SPECIFICATIONS

- Application Return Line
- Flow 120 GPM
- Pressure 200 PSI max.
- Ports 1 1/2" NPT ports (also 2" SAE code 61 4 bolt flange)
- Gauge Ports 1/8" NPT (plugged), 1/4" NPT (open)
- Temperature 200° F max.
- By-pass Valve 25 PSI
- Pressure Switch 22 PSI
- Mounting Holes 2" x 5 9/8" tapped 3/8-16
- Size 11 9/16" x 5" x 3 1/2"
- Shpg. 6 lbs.

**High Pressure
Inline
Filter** 



ITEM 9-7293
\$211.50

• Brand new, ZINGA Series P3000 high pressure inline filter. Ideal for external charge pump filtration and high shock return line filtration. Buna-N Seals. Visual differential pressure indicator.

SPECIFICATIONS

- 10 micron filter
- 30 GPM
- SAE 12 ports
- 3000 PSI max.
- Operating temp. -40° to 250° F
- By-pass valve setting 50 PSI
- Size 4" diam. x 13 1/2"
- Shpg. 6 lbs.

Replacement Filter Element

ITEM 9-7293-10L  10 micron **\$33.75**

**3/8" NPT Zinga
Return
Inline Filter**



ITEM 9-7291
\$12.95

• Brand new, ZINGA.

SPECIFICATIONS

- 10 micron return line application
- 7 GPM return line
- 200 PSI max.
- Ports 3/8" NPT
- 250° F max.
- Built-in 18 PSI by-pass
- Size 3 1/8" diam. x 4 1/2"
- Shpg. 1 1/2 lbs.

Replacement Filter Element

ITEM 9-7291-10-18 10 micron  **\$7.40**

**7 GPM Return
Line Filter**



ITEM 9-8995
\$8.95

• New, FILTRATION PRODUCTS ydraulic filter with FPE-15-10N-BLA spin on element. No bypass.

SPECIFICATIONS

- Application Return Line
- Ports 3/8" NPT
- Flow Rate 7 GPM max.
- Filtration 10 Micron
- Size 3 1/8" dia. x 4 5/8" long
- Shpg. 1 1/2 lbs.

**Tank
Clean-Out
Cover**



ITEM 9-12464
\$22.00

• Brand new, BUYERS model CPA56 hydraulic tank clean-out filter flange with cover assembly. Ideal tank accessory for access to clean and provide maintenance on hydraulic reservoirs or installing a filter. Includes 1/8" thick steel plate with 5" opening to weld to reservoir, 4 bolt galvanized cover plate and gasket.

SPECIFICATIONS

- Nominal Hole Size 5"
- Plate Dimensions 7 3/4" x 7 3/4" x 1/8"
- Cover Bolt Hole Dimensions 4 bolt on 6 1/4" bolt circle
- Shpg. 4 lbs.

Plastic Seal Pick Tool

ITEM 9-8099 
\$1.95



• Brand new, plastic pick tool for removing O-rings and seals to prevent damage to delicate machined surfaces. 5 1/2" overall length. **Shpg.** 1/10 lb.