

**Vacuum & Pressure Gauges**

• The following dry gauges measure both vacuum and the pressure indicated.

**1/4" NPT Lower Connection**



ITEM	PSI	Dia.	Case	Shpg.	Price
21-1607-CP	30"x300	4"	Steel	2 lbs.	\$15.95

**1/4" NPT Panel Connection**



ITEM	PSI	Dia.	Case	Shpg.	Price
21-1637-CP	30"x400	2 1/2"	Steel	1/2 lb.	\$5.95
21-1420	30"x800	3 1/2"		1/2 lb.	\$8.95

**1/4" NPT Flange Back Connection**



ITEM	PSI	Dia.	Case	Shpg.	Price
21-1472	6000	3 1/2"		2 lbs.	\$15.99

**Liquid Filled Gauges**

**1/8" NPT Left Side Connection**



ITEM	PSI	Dia.	Case	Shpg.	Price
21-1722	300	2"	Stainless	1/2 lb.	\$4.99

**1/4" NPT Back Connection**



ITEM	PSI	Dia.	Case	Shpg.	Price
21-1700	300	1 1/2"	Stainless	1/2 lb.	\$5.95

**1/4" NPT Panel Connection**



ITEM	PSI	Dia.	Case	Shpg.	Price
21-1572-X	1500	2 1/2"	Plastic	1/2 lb.	\$11.95

**1/4" NPT Lower Connection**



ITEM	PSI	Dia.	Case	Shpg.	Price
21-1393	250Kg/cm2	2 1/2"	Plastic	1 lb.	\$ 8.95
21-1652-C *	16 BAR	2 1/2"	Steel	1 lb.	\$12.95

**SAE 4 Back Connection**

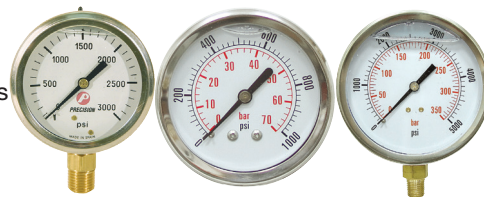


\*\* bulkhead type

ITEM	PSI	Dia.	Case	Shpg.	Price
21-1652-A **	100	2 1/2"	Steel	1 lb.	\$12.95

**Glycerin Filled Pressure Gauges**

• Brand new. Glycerin damps vibrations, protects against surge pressure. Stainless steel case & bezel. Combination scale reads in both PSI and BAR. Temperature range -40° F to 180° F. 1/4" NPT brass connection. **Shpg. 1 lb.**



	2 1/2" Face Lower Connection	2 1/2" Face Back Connection	4" Face Lower Connection
	<b>\$12.85</b>	<b>\$13.80</b>	<b>\$22.90</b>
PSI	ITEM	ITEM	ITEM
30	21-1246-A	21-1799-A	21-1800-A
60	21-1246-B	21-1799-B	21-1800-B
100	21-1246-C	21-1799-C	21-1800-C
200	21-1246-D	21-1799-D	21-1800-D
300	21-1246-E	21-1799-E	21-1800-E
400	21-1246-F	21-1799-F	21-1800-F
600	21-1246-G	21-1799-G	21-1800-G
1000	21-1246-H	21-1799-H	21-1800-H
1500	21-1246-I	21-1799-I	21-1800-I
2000	21-1246-J	21-1799-J	21-1800-J
3000	21-1246-K	21-1799-K	21-1800-K
5000	21-1246-L	21-1799-L	21-1800-L
6000	21-1246-M	21-1799-M	21-1800-M
10,000	21-1246-N	21-1799-N	21-1800-N

**Dry Pressure & Vacuum Gauges**



• Brand new. 2" dial. 1/4" NPT lower connection. **Shpg. 1/2 lb.**

**Pressure Gauges \$5.75 each**

- ITEM 2140-30 0 to 30 PSI
- ITEM 2140-60 0 to 60 PSI
- ITEM 2140-100 0 to 100 PSI
- ITEM 2140-160 0 to 160 PSI
- ITEM 2140-200 0 to 200 PSI
- ITEM 2140-300 0 to 300 PSI

**Vacuum Gauge**

ITEM 2141 0 to 30" VAC **\$5.75**

**800 PSI Glycerin Filled 2 1/2" Stainless Steel Pressure Gauge**



ITEM 21-1847 **\$9.99**


• New. MCDANIEL CONTROLS. Glycerin damps vibrations, protects against surge pressure.

**SPECIFICATIONS**

- Range 0-800 PSI
- Face dia. 2 1/2"
- Case Material: Stainless Steel
- Connection 1/4" NPT back w/panel mount clamp
- Type Glycerin filled
- **Shpg 1 lb.**

**15,000 PSI 2 1/2" Liquid Filled Pressure Gauge**



ITEM 21-1764-L 

**\$69.95** >Power Team®  
• Brand new, POWER TEAM Model 9040 pressure gauge. Liquid filled. Red background at 10,000 to 15,000 PSI range.

**SPECIFICATIONS**

- Liquid Filled
- Range 0 to 15000 PSI / 0 to 1034 BAR
- Graduations 500 PSI / 20 BAR
- Gauge Type Pressure
- Face Dia. 2 1/2"
- Mount Lower
- Connection 1/4" NPT
- Case Material Steel
- **Shpg. 1/2 lbs.**

**Shift Knob**



ITEM 1-5449 **\$2.99**

• New, leather grained nylon black knob. Brass female thread insert recessed 1 3/8" from base.

**SPECIFICATIONS**

- Diameter 1.6"
- Length 2 3/8"
- Thread Size 3/8-16
- Thread Length 5/8"
- **Shpg. 1/4 lb.**

**3" Cam Follower**



ITEM 1-5438 **\$69.95**

• New, PCI model HCCF-3.00-SH. Steel needle bearing cam follower with stud. Crowned surface. Relubricatable.

**SPECIFICATIONS**

- Roller 3 dia. x 1 1/4" wide
- Mounting stud thread 1 1/2-12 x 1 1/4"
- Stud Length 2 1/2" overall
- Hex Socket 3/4"
- Size 3" diam. x 4 1/4"
- **Shpg. 5 lbs.**