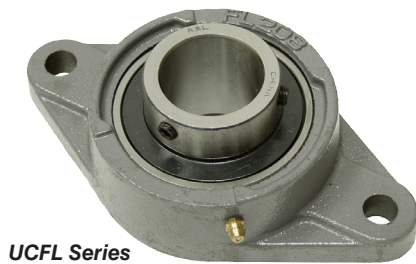


2 Bolt Flange Bearings

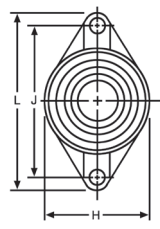
• Brand new 200 series normal duty flange bearings. Cast iron construction with self-aligning ball bearing insert and grease zerk.



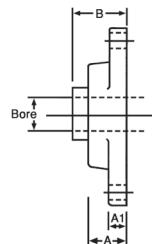
UCFL Series



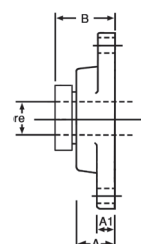
HCFT Series



Front View
Both Series



Side UCFL



Side HCFT

Bore	UCFL Series Two Set Screws, No Lock Collar									HCFT Series Eccentric Locking Collar w/Set Screws									Shpg.	
	ITEM	Price	Dimensions						Bolt	ITEM	Price	Dimensions								
			A	A1	B	H	J	L					A	A1	B	H	J	L		
1/2"	1-201-08-2	\$10.05	1.004	0.433	1.312	2.362	3.543	4.449	3/8"	N/A	-	-	-	-	-	-	-	-	-	3
5/8"	1-202-10-2	\$10.05	1.004	0.433	1.312	2.362	3.543	4.449	3/8"	N/A	-	-	-	-	-	-	-	-	-	3
3/4"	1-204-12-2	\$ 9.60	1.004	0.433	1.312	2.362	3.543	4.449	3/8"	1-204-12-2-C	\$10.70	1.161	0.591	1.791	2.375	3.543	4.429	3/8"	3	
7/8"	1-205-14-2	\$11.00	1.063	0.512	1.405	2.677	3.898	5.118	7/16"	1-205-14-2-C	\$12.15	1.181	0.591	1.807	2.756	3.898	4.843	7/16"	3	
15/16"	1-205-15-2	\$11.00	1.063	0.512	1.405	2.677	3.898	5.118	7/16"	1-205-15-2-C	\$12.15	1.181	0.591	1.807	2.756	3.898	4.843	7/16"	3	
1"	1-205-16-2	\$11.00	1.063	0.512	1.405	2.677	3.898	5.118	7/16"	1-205-16-2-C	\$12.15	1.181	0.591	1.807	2.756	3.898	4.843	7/16"	3	
1 1/8"	1-206-18-2	\$13.75	1.221	0.512	1.583	3.150	4.606	5.827	7/16"	1-206-18-2-C	\$17.00	1.280	0.630	1.972	3.228	4.587	5.591	7/16"	4	
1 3/16"	1-206-19-2	\$13.75	1.221	0.512	1.583	3.150	4.606	5.827	7/16"	1-206-19-2-C	\$17.00	1.280	0.630	1.972	3.228	4.587	5.591	7/16"	4	
1 1/4"	1-206-20-2	\$13.75	1.221	0.512	1.583	3.150	4.606	5.827	7/16"	1-206-20-2-C	\$17.00	1.280	0.630	1.972	3.228	4.587	5.591	7/16"	4	
1 1/4"	1-207-20-2	\$15.05	1.339	0.551	1.748	3.543	5.118	6.339	1/2"	1-207-20-2-C	\$17.85	1.417	0.669	2.098	3.701	5.118	6.221	1/2"	5	
1 5/16"	1-207-21-2	\$15.05	1.339	0.551	1.748	3.543	5.118	6.339	1/2"	1-207-21-2-C	\$17.85	1.417	0.669	2.098	3.701	5.118	6.221	1/2"	5	
1 3/8"	1-207-22-2	\$15.05	1.339	0.551	1.748	3.543	5.118	6.339	1/2"	1-207-22-2-C	\$17.85	1.417	0.669	2.098	3.701	5.118	6.221	1/2"	5	
1 7/16"	1-207-23-2	\$15.05	1.339	0.551	1.748	3.543	5.118	6.339	1/2"	1-207-23-2-C	\$17.85	1.417	0.669	2.098	3.701	5.118	6.221	1/2"	5	
1 1/2"	1-208-24-2	\$18.05	1.417	0.551	2.016	3.937	5.669	6.890	1/2"	1-208-24-2-C	\$21.05	1.535	0.669	2.319	4.055	5.650	6.772	1/2"	6	
1 5/8"	1-209-26-2	\$22.00	1.496	0.630	2.055	4.252	5.827	7.402	9/16"	1-209-26-2-C	\$24.85	1.575	0.709	2.319	4.252	5.847	7.087	9/16"	7	
1 11/16"	1-209-27-2	\$22.00	1.496	0.630	2.055	4.252	5.827	7.402	9/16"	1-209-27-2-C	\$24.85	1.575	0.709	2.319	4.252	5.847	7.087	9/16"	7	
1 3/4"	1-209-28-2	\$22.00	1.496	0.630	2.055	4.252	5.827	7.402	9/16"	1-209-28-2-C	\$24.85	1.575	0.709	2.319	4.252	5.847	7.087	9/16"	7	
1 7/8"	1-210-30-2	\$27.75	1.575	0.630	2.150	4.528	6.181	7.756	9/16"	1-210-30-2-C	\$30.30	1.772	0.787	2.602	4.488	6.181	7.480	9/16"	8	
1 15/16"	1-210-31-2	\$27.75	1.575	0.630	2.150	4.528	6.181	7.756	9/16"	1-210-31-2-C	\$30.30	1.772	0.787	2.602	4.488	6.181	7.480	9/16"	8	
2"	1-210-32-2	\$27.75	1.575	0.630	2.150	4.528	6.181	7.756	9/16"	1-210-32-2-C	\$30.30	1.772	0.787	2.602	4.488	6.181	7.480	9/16"	8	
2"	1-211-32-2	\$33.15	1.693	0.709	2.299	5.118	7.244	8.819	5/8"	1-211-32-2-C	\$37.95	1.890	0.827	2.937	5.039	7.244	8.543	5/8"	9	
2 1/8"	1-211-34-2	\$33.15	1.693	0.709	2.299	5.118	7.244	8.819	5/8"	1-211-34-2-C	\$37.95	1.890	0.827	2.937	5.039	7.244	8.543	5/8"	9	
2 3/16"	1-211-35-2	\$33.15	1.693	0.709	2.299	5.118	7.244	8.819	5/8"	1-211-35-2-C	\$37.95	1.890	0.827	2.937	5.039	7.244	8.543	5/8"	9	
2 1/4"	1-212-36-2	\$42.55	1.890	0.709	2.704	5.512	7.953	9.843	5/8"	1-212-36-2-C	\$47.20	2.087	0.827	3.181	5.433	7.953	9.331	5/8"	12	
2 3/8"	1-212-38-2	\$42.55	1.890	0.709	2.704	5.512	7.953	9.843	5/8"	1-212-38-2-C	\$47.20	2.087	0.827	3.181	5.433	7.953	9.331	5/8"	12	
2 7/16"	1-212-39-2	\$42.55	1.890	0.709	2.704	5.512	7.953	9.843	5/8"	1-212-39-2-C	\$47.20	2.087	0.827	3.181	5.433	7.953	9.331	5/8"	12	
2 1/2"	1-213-40-2	\$56.05	1.969	0.787	2.744	6.102	8.268	10.158	3/4"	N/A	-	-	-	-	-	-	-	-	15	
2 3/4"	1-214-44-2	\$61.50	2.126	0.787	2.968	6.299	8.504	10.433	3/4"	N/A	-	-	-	-	-	-	-	-	17	
2 15/16"	1-215-47-2	\$75.25	2.205	0.787	3.093	6.496	8.858	10.827	3/4"	N/A	-	-	-	-	-	-	-	-	18	
3"	1-215-48-2	\$75.25	2.205	0.787	3.093	6.496	8.858	10.827	3/4"	N/A	-	-	-	-	-	-	-	-	18	

Flange Bearings



• Brand new. Two bolt stamped steel housing with sealed self aligning ball bearing. Inner race with 2 set screws.

ITEM	Bore	Centers	Bolts	Shpg.	Price	Bolt Uses	
1-3031	1/2"	2 1/2"	1/4"	1/2 lb.	\$9.25		
1-1869	5/8"	2 1/2"	1/4"	1/2 lb.	\$9.25		
1-2386	3/4"	2 13/16"	5/16"	1/2 lb.	\$11.85		
1-2387	1"	2.992"	5/16"	1 lb.	\$12.30		
1-2388	1 1/4"	3 9/16"	3/8"	1 lb.	\$12.65		



1-205-16-T



1-211-32-T

Take-Up Bearings

• Brand new, DURA-ROLL take-up bearings. Cast iron housing. Two set screws on inner race. Bearing has grease zerk. Additional specs on our website.

UCT Series Two Set Screws, No Lock Collar						
ITEM	Bore	Housing	Bore thru-lgth.	Shpg.	Price	
1-205-16-T	1"	UCT205	1.338"	2 lbs.	\$13.75	
1-206-20-T	1.25"	UCT206	1.5"	3 lbs.	\$16.75	
1-207-20-T	1.25"	UCT207	1.69"	4 lbs.	\$19.05	
1-207-23-T	1 7/16"	UCT207	1.69"	4 lbs.	\$19.05	
1-208-24-T	1.5"	UCT208	1.937"	6 lbs.	\$22.75	
1-209-28-T	1.75"	UCT209	1.937"	6 lbs.	\$28.05	
1-210-31-T	1 15/16"	UCT210	2.03"	6 lbs.	\$30.60	
1-211-32-T	2"	UCT211	2.19"	10 lbs.	\$41.10	