

60:1 Right Angle Gear Reducer



ITEM 13-1581-60-56C-1
\$89.95

• New, aluminum worm gear reducer. Aluminum alloy housings. Gearbox flange accepts NEMA 56C face mount electric motors. Pre-filled with synthetic oil. Two bearings on the input and output shafts, double lip oil seals, epoxy paint inside and outside for rust prevention, and hollow output bores to accept plug-in output shafts (sold separately).

SPECIFICATIONS

- Brand World Wide Electric
- Model Number CALM63-60/1-56C-1
- Box Size 63 mm Center Distance
- Gear Ratio 60:1
- Output RPM @ 1750 RPM Input 29 RPM
- Input HP (1.0 S.F.) 0.82 Hp Max
- Output Torque 1135 in.-lb. Max
- Over-Hung Load 985 lbs.
- Max Output Shaft Thrust Load 197 lbs. Max
- Efficiency 68 %
- Motor Mount 56C
- Hollow Output Bore 1" keyed, 1/4" keyway
- Top & Bottom Mount 100mm x 85mm
- Back Mount 130mm x 85mm
- Overall Size 6.87" x 6.5" x 8.5"
- Shpg. 13 lbs.

Single Output Shaft for Size 63 Aluminum Reducers



ITEM 13-1581-S-1
\$9.95

SPECIFICATIONS

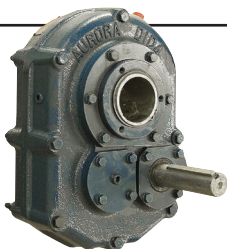
- Part Number CALM63-S-1
- Diameter 1"
- Key Slot 1/4"
- Tapped 3/8-16
- Output Length 2.36"
- Overall length 7.2"

60:1 Right Angle Gear Reducer

ITEM 13-1581-60-56C-75 **\$89.95**
Same as 13-1581-80-56c-1 Except 3/4" hollow output.

3/4 Diameter Output Shaft for 13-1581-60-56C-75

ITEM 13-1581-S-75 **\$9.95**



9:1 Size 4 Shaft Mount Reducer

ITEM 13-1497 **\$429.95**

• New, AURORA shaft mount reducer. 9:1 gear ratio. Cast iron housing, high grade case hardened steel gears and shafts. Tapered roller bearings. Tapered bushing output (bushing not included). Torque arm included. Similar to Dodge or Browning. HP, torque and RPM specifications are for Class III service. May be used with accessories on previous page.

SPECIFICATIONS

- Model DID409
- Ratio 9:1
- Input Power 15 HP
- Output 132-200 RPM
- Torque 4811-3230 in.-lbs.
- Min Drive Pulley Diam 4.0"
- Input Shaft 1 7/16" diam. X 5" w/3/8" keyway
- Output Bore see table below
- Size 10 1/2" x 8" x 15"
- Shpg. 160 lbs.

Truck freight only.



Right Angle Gearboxes

• Brand new. Right angle gearboxes. One piece cast iron gear case and bearing caps. Roller bearings. Ships without oil, user must add 1/3 quart of 80-90 W oil prior to use.



SPECIFICATIONS FOR ALL

- Ratio 1:1
- Input power 40 HP intermittent, 32 HP continuous
- Input speed 1800 RPM max.
- Output shaft 1" dia. x 2 1/2" w/1/4" keyway
- Mount four 3/8-16 tapped holes, 4/4" square
- Size 5 7/8" x 6 1/2" x 4 1/8"
- Shpg. 24 lbs.

| ITEM | Input Shaft | Output rotation | Price |
|------------|--|-------------------|-----------------|
| 13-1423 | 1" dia. x 2 1/2" w/5/16" crosshole | Opposite of input | \$149.95 |
| 13-1423-S | 1" dia. x 2 1/2" w/5/16" crosshole | Same as input | \$149.95 |
| 13-1423-KC | 1" dia. x 2 1/2" w/1/4" keyway and 5/16" crosshole | Opposite of input | \$161.80 |
| 13-1423-SK | 1" dia. x 2 1/2" w/1/4" keyway | Same as input | \$149.95 |
| 13-1423-3K | 1" dia. x 2 1/2" w/1/4" keyway | Dual shaft | \$169.95 |

Tol-O-Matic Float A Shaft Gearbox



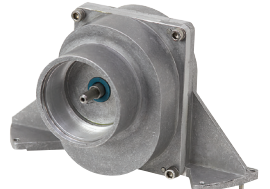
ITEM 13-116266
\$39.95

• Float-A-Shaft is a universal right-angle gearbox coupling, consisting of two 45° helical gears that mesh at right angles. They can be operated in either direction and slide axially along either shaft. An aluminum housing encloses gears which are keyed directly to the shafts. Unique floating design maintains perfect alignment. Bronze bushings. Rated for a maximum of 500 RPM. Shafts must be supported with external bearings.

SPECIFICATIONS

- Model 01050000
- Gear Ratio 1:1
- Bore 1/2" dia. x 1/8" keyway
- Torque 100 in.lb. max. at 225 RPM
- RPM 500 max.
- Length thru bore 3"
- Orientation LH
- Size 3 1/2" x 2 3/4" x 3"
- Shpg. 3 lbs.

96:1 Inline Gear Reducer



ITEM 13-1586
\$39.95

• New, THOMSON MICRON inline speed reducer. Aluminum housing.

SPECIFICATIONS

- Nominal Ratio 96:1
- Actual Ratio 95.98:1
- Output RPM @ 1800 RPM Input 18.75 RPM
- Input Shaft 1/4" dia. x 1/2" (no keyway or flat)
- Output Shaft 1/2" dia. x 5/8" long with dual flats
- Motor Mount 2" ID housing
- Base Mount Four 0.35" holes on 5.12" x 4.33" centers
- Size 7 9/16" x 3 1/8" x 4"
- Shpg. 3 lbs.

50:1 Gear Reducer



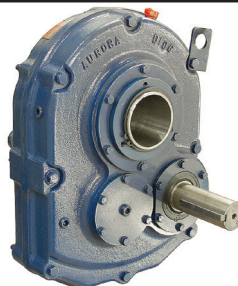
ITEM 13-1594 **\$69.95**

• New, IPTS, right-angle worm gear reducer. Cast iron housing. Long output shaft. Mounts with thru holes on housing. Auxiliary 3/16" dia. x 1/2" shaft w/flat on rear of output shaft.

SPECIFICATIONS

- Ratio 50:1
- Power 0.44 HP max.
- Input Speed 1725 RPM max.
- Output Speed 35 RPM max.
- Output Torque 504 in.-lb. max.
- Overhung Load 570 lbs.
- Centerline Distance 2.06"
- Input Shaft 5/8" dia. x 1 9/16" with 3/16" key
- Output Type Right hand shaft
- Output Shaft 1" dia. x 6" with 1/4" key slot
- Mount 5" x 3 3/4"
- Size 5" x 3 1/2" x 6"
- Shpg. 18 lbs.

9:1 Size 6 Shaft Mount Reducer



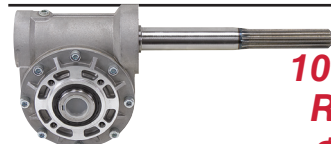
ITEM 13-1498
\$849.95

• New, AURORA shaft mount reducer. Service class III. Cast iron housing, high grade case hardened steel gears and shafts. Double lip seals. Metal reinforced double lips, spring loaded oil seals. Tapered roller bearings. Tapered bushing output (bushing not included). Torque arm included. Similar to DODGE TXT609 or BROWNING 307SMT09 shaft mount reducers. May be used with accessories on previous page.

SPECIFICATIONS

- Model DID609
- Ratio 9:1
- Input Power 30 HP
- Output 99-200 RPM
- Torque 4811-3230 in.-lbs.
- Min Drive Pulley Diam 4.0"
- Input Shaft 2 3/16" diam. X 5 1/2" w/1/2" keyway
- Output Bore see table below
- Size 16" x 9 1/2" x 21"
- Shpg. 330 lbs.

Truck freight only.



10:1 Gear Reducer

ITEM 13-1574 **\$69.95**

• New, CLEVELAND GEAR model AKQM70-LH gear reducer. Aluminum housing. Four mounting holes on either side of output bore. CW rotation of input shaft give CW output when viewed from right side of housing.

SPECIFICATIONS

- Ratio 10:1
- Power 3.2 HP max.
- Input Speed 1800 RPM max.
- Output Speed 180 RPM max.
- Torque 835 in.-lbs. max.
- Center Line Distance 70mm
- Input Shaft 9" total length,
- 30mm dia. with last 4" 1-15 spline
- Output Bore Accepts 1 1/8" dia. shaft w/1/4" keyway
- Bore thru length 4.75"
- Mount Four M8 tapped holes on 3.937" bolt circle each side of output bore
- Size 7" x 4 3/4" x 7 1/2"
- Shpg. 24 lbs.