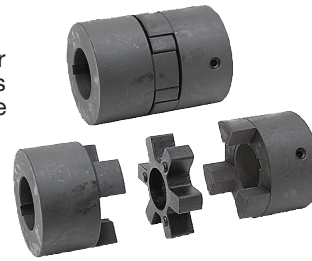


### 3 Piece Flexible & Spline Couplings

- Brand new, 3-piece flexible couplings. Use to connect engines or electric motors to pumps, gear reducers, drive shafts. Purchase two halves and one flexible insert to make a complete coupling. Inserts are available in either rubber or urethane construction. Urethane gives longer life and 50% greater torque handling capability. Splined halves are available for use with hydraulic pumps.
- Interchangeable with L Series jaw couplings from Lovejoy, Browning and others.
- Some series can be interchanged to reduce overall length. Series Interchangeability:  
L-090 with L-095 coupled length will be 2<sup>5</sup>/<sub>16</sub>"      L-099 with L-100 coupled length will be 3<sup>3</sup>/<sub>16</sub>"



Complete Coupler

**Example:**

A complete coupling for 10 HP at 3600 RPM coupling a 1/2" dia. shaft and a 5/8" 9 tooth splined shaft.

Order one each of

- 1-3421-E (L-095 Series 1/2" bore keyed coupling half)
- 1-3421-9 (L-095 Series 5/8" 9 tooth splined coupling half)
- 1-3421-X (L-095 Series rubber insert)



L-050 Series



L-075 thru L-110 Series

Inserts for 3 Piece Couplings						
Coupling Series	Rubber Inserts			Urethane Inserts		
	ITEM	Shpg.	Price	ITEM	Shpg.	Price
L-050	1-3419-X	1/10	\$1.90			
L-070	1-3614-X	1/10	\$2.45			
L-075	1-3420-X	1/10	\$3.55	1-3420-UR	1/10	\$12.45
L-090	1-3615-X	1/10	\$3.85	1-3615-UR	1/10	\$15.40
L-095	1-3421-X	1/10	\$3.85	1-3421-UR	1/10	\$15.40
L-099	1-3616-X	1/10	\$6.55	1-3616-UR	1/10	\$20.95
L-100	1-3422-X	1/10	\$6.55	1-3422-UR	1/10	\$21.40
L-110	1-3423-X	1/4	\$10.80			

Coupling Series	Performance Ratings with Rubber Insert							
	Rated Torque (in-lbs.)	100	300	1200	1800	3600	Coupling O.D.	Coupled Length
L-050	28	0.04	0.12	0.48	0.72	1.44	1 <sup>5</sup> / <sub>16</sub> "	1 <sup>23</sup> / <sub>32</sub> "
L-070	37	0.06	0.18	0.72	1.08	2.16	1 <sup>3</sup> / <sub>8</sub> "	2"
L-075	73	0.12	0.36	1.44	2.16	4.32	1 <sup>3</sup> / <sub>4</sub> "	2 <sup>1</sup> / <sub>8</sub> "
L-090	126	0.20	0.60	2.40	3.60	7.20	2 <sup>1</sup> / <sub>8</sub> "	2 <sup>11</sup> / <sub>32</sub> "
L-095	169	0.28	0.84	3.36	5.04	10.08	2 <sup>7</sup> / <sub>16</sub> "	2 <sup>1</sup> / <sub>2</sub> "
L-099	260	0.42	1.26	5.04	7.56	15.10	2 <sup>1</sup> / <sub>32</sub> "	2 <sup>7</sup> / <sub>8</sub> "
L-100	370	0.60	1.80	7.20	10.80	21.60	2 <sup>1</sup> / <sub>32</sub> "	3 <sup>1</sup> / <sub>2</sub> "
L-110	680	1.10	3.30	13.20	19.80	39.60	3 <sup>5</sup> / <sub>16</sub> "	4 <sup>7</sup> / <sub>32</sub> "

**Bore Sizes - Choose ITEM number suffix letter based on bore size required. Splined bores have numeric suffix.**

Coupling Series	ITEM Prefix	Flexible Coupling Halves																Per Half Price	Splined Coupling Halves				Per Half Shpg.			
		Bore Sizes																	9 Tooth	11 Tooth	13 Tooth	Per Half Price				
		1/4"	5/16"	3/8"	7/16"	1/2"	9/16"	5/8"	5/8"	3/4"	7/8"	15/16"	1"	1 1/8"	1 1/4"	1 3/8"	1 7/16"	1 1/2"	1 5/8"							
L-050	1-3419	A	B	C	D	E	-	G	-	-	-	-	-	-	-	-	-	-	-	-	\$3.95					1/2
L-070	1-3614	-	-	-	-	E	-	G	-	H	-	-	-	-	-	-	-	-	-	-	\$5.10					3/4
L-075	1-3420	-	-	-	D	E	-	G	G-156	H	J	-	-	-	-	-	-	-	-	-	\$5.65					3/4
L-090	1-3615	-	-	-	-	E	-	G	-	-	-	-	-	-	-	-	-	-	-	-	\$6.90	9	11	13	\$20.25	1
L-095	1-3421	-	-	-	D	E	F	G	G-156	H	J	K	M	N	-	-	-	-	-	-	\$8.70	9	11	13	\$20.25	1
L-099	1-3616	-	-	-	-	E	-	G	G-156	H	J	-	M	N	O	-	-	-	-	-	\$12.75	9	11	13	\$26.25	2
L-100	1-3422	-	-	-	-	E	F	G	G-156	H	J	K	M	N	O	P	-	-	-	-	\$14.50	9	11	13	\$27.00	2
L-110	1-3423	-	-	-	-	-	-	G	-	H	J	-	M	N	O	P	Q	R	S	-	\$23.55	9	11	13	\$42.00	5

G-156 has special 5/32" keyway

### Solid Shaft Couplers



- Brand new. Rigid steel couplers for connecting shafts together. Made from cold rolled steel. Keyed couplers have keyway slot and 2 set screws.

Keyed Shaft Couplers



Spline Shaft Couplers

ITEM	Bore	O.D.	Lgth.	Keyway	Shpg.	Price
1-1563-A	1/2"	1 1/4"	2"	1/8"	1 lb.	\$5.75
1-1563-B	5/8"	1 1/2"	2 1/2"	3/16"	1 lb.	\$7.40
1-1563-C	3/4"	1 5/8"	3"	3/16"	2 lbs.	\$9.05
1-1563-D	7/8"	1 3/4"	3 1/2"	3/16"	2 lbs.	\$9.15
1-1563-E	1"	1 3/4"	4"	1/4"	2 lbs.	\$12.20
1-1563-F	1 1/8"	2"	4 1/2"	1/4"	3 lbs.	\$16.70
1-1563-G	1 1/4"	2 1/8"	4 1/2"	1/4"	3 lbs.	\$17.10
1-1563-J	1 1/4"	2 1/8"	4 1/2"	5/16"	3 lbs.	\$17.10
1-1563-H	1 3/8"	2 5/16"	4 1/2"	5/16"	4 lbs.	\$18.50
1-1563-I	1 1/2"	2 1/2"	4 1/2"	3/8"	4 lbs.	\$21.75

ITEM	Bore	O.D.	Lgth.	Shpg.	Price
1-1495	5/8" 9 T	1 1/4"	1 1/4"	1 lb.	\$9.80
1-2985	3/4" 11 T	1 1/2"	2 1/4"	2 lbs.	\$12.65
1-1392	7/8" 13 T	1 1/2"	2 1/4"	2 lbs.	\$8.15
1-1560	1" 6 T	1 1/2"	2 1/4"	1 lb.	\$9.25
1-1561	1" 15 T	1 1/2"	2 1/4"	1 lb.	\$9.25
1-1393	1 1/4" 14 T	2"	2 1/4"	2 lbs.	\$11.25
1-1562	1 3/8" 6 T	2"	5"	3 lbs.	\$22.90
1-3556	1 3/8" 21 T	2"	2 1/4"	2 lbs.	\$13.35
1-1513	1 1/2" 17 T	2 3/8"	2"	2 lbs.	\$15.35

### 1" Swivel Eye Rod End \$19.95 each



**ITEM 1-4978**

- Model AM16T-56 1-14UNS-3A thread x 2.34"

- New, AURORA BEARING, precision 3 piece swivel eye rod end. High strength alloy steel housing and raceway. PTFE liner. Made in USA.

**SPECIFICATIONS**

- Body thread type male right hand thread
- Housing width 1"
- Swivel eye 1" bore x 1.375" wide
- Static load rating 76,200 lbs.
- Misalignment angle 17° max.
- End to center 4.125"
- Shpg. 3 lbs.