

115 VAC Inline Gearmotors

• New, inline gearmotors. Ideal replacement corn pellet stove, auger motor. Originally built for Bixby stoves. Aluminum gear housing.

1.8 RPM



ITEM 5-1771

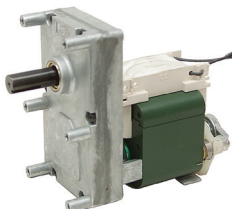
\$18.95

• Four 8-32 UNC tapped bolt hole face mount on 2³/₈" x 2³/₈" centers.

SPECIFICATIONS

- SPG Co. Model ISG-3220BXA(P/N 2051788)
- Speed 1.8 RPM
- Voltage 115 AC
- Amperage 0.4 Amps
- Torque 110 in - lbs.
- Rotation CW
- Duty intermittent (5 min)
- Enclosure open
- Mount face
- Shaft 1/2" dia. x 1 1/4", 1/2-13 UNC RH threaded
- Size 3 3/8" x 2 3/4" x 4 3/4"
- Shpg. 5 lbs.

6.5 RPM



ITEM 5-1770

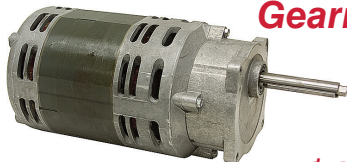
\$18.95

• Four 10-32 UNF tapped bolt hole face mount on 2³/₈" x 2³/₈" centers. Integral brake.

SPECIFICATIONS

- SPG Co. Model ISG-3250BXA(P/N 2051746)
- Speed 6.5 RPM
- Voltage 115 AC
- Amperage 2.65 Amps
- Torque 225 in - lbs.
- Rotation CW
- Duty intermittent (1 min)
- Enclosure open
- Mount face
- Shaft 1/2" dia. x 1 1/4" w/keyway
- Size 5 1/4" x 2 3/4" x 4 3/4"
- Shpg. 7 lbs.

743 RPM, 115 VAC Inline Gearmotor



ITEM 5-1647

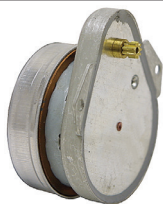
\$39.99

• Used, BODINE Electric, inline gear motor. Includes run and start capacitors. Requires relay (not included) for start capacitor.

SPECIFICATIONS

- Speed 743 RPM
- Voltage 115 AC
- Amperage 9.9 Amps
- Power 440 watts
- Torque 44 in - lbs.
- Gear ratio 2.42:1
- Rotation CW
- Duty continuous
- Enclosure open
- Mount face 3 5/8" x 3 5/8"
- Shaft 16mm x 3 1/2" w/keyway
- Size 5 1/2" x 10 1/2" x 5 1/2"
- Shpg. 36 lbs.

115 VAC Synchronous Timing Motor



ITEM 10-958-A

\$1.89

• New. For timing, window display and sign animation, experimental purposes, etc.

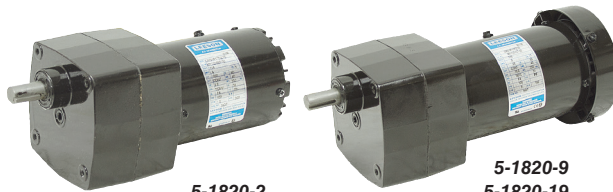
SPECIFICATIONS

- 120 VAC
- 4.5 watts
- 60 Hz
- Continuous duty
- 50 RPH
- CCW rotation
- Shaft 3/16" dia. 9 T gear
- Mount 2 bolt on 1 7/8" ctrs.
- Size 1 7/8" x 2" x 2 1/2"
- Shpg. 1 lb.

115 VAC Inline Gearmotors



\$394.80 each



5-1820-2

5-1820-9
5-1820-19

• Brand new LEESON inline split capacitor gearmotors. Features steel gears and needle bearing supported output shaft. No thermal overload. Capacitor furnished.

SPECIFICATIONS

- Voltage 115 AC
- Torque 100 in - lbs.
- Rotation reversible
- Duty continuous
- Enclosure TENV
- Mount four 10-32 holes on face, 2.645" x 2.645"
- Shaft 1/2" dia. x 1" w/1/8" keyway

ITEM	Model	RPM	Amps	HP	Gear Ratio	Size	Shpg.
5-1820-2	M1125050	1.9	0.4	1/150	900:1	7.25" x 3.63" x 3.63"	9 lbs.
5-1820-9	M1125127	9	0.9	1/15	180:1	8.86" x 3.75" x 3.97"	11 lbs.
5-1820-19	M1125128	19	0.9	1/15	180:1	8.86" x 3.75" x 3.97"	12 lbs.

4 RPM 115 VAC Inline Gearmotor



ITEM 5-1915

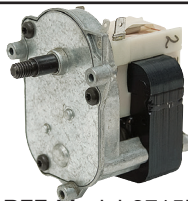
\$139.95

• New DAYTON model 90K942 inline shaded pole gearmotor. Features steel gears and needle bearing supported output shaft. No thermal overload. Base mount bracket included.

SPECIFICATIONS

- Speed 4 RPM
- Voltage 115 AC
- Amperage 1.4 Amps
- Power 1/40 HP
- Torque 200 in - lbs.
- Gear Ratio 396:1
- Rotation CW
- Duty Continuous
- Enclosure TEFC
- Mount Base or Face
- Shaft 5/8" dia. x 1 1/2" w/ 3/16" keyway
- Size 8 3/8" x 4 1/8" x 5 1/8"
- Shpg. 10 lbs.

15 RPM, 115 VAC, Gearmotor



ITEM 5-1684

\$9.95

• New, MERKLE-KORFF Model 3715UP-250. Thermally protected, shaded pole motor. Metal gear housing.

SPECIFICATIONS

- Speed 15 RPM
- Voltage 115 AC
- Amperage 2.7 Amps
- Power 97 Watts at idle
- Rotation CW
- Duty intermittent
- Face mt 3 untapped bosses
- Shaft Threaded end 5/16"-18 LH Base end 3/8" dia. x 3/8" long Overall lgth. 1 5/16"
- Size 3 3/8" x 2 1/2" x 4"
- Shpg. 3 lbs.

3.5 RPM 115 VAC Inline Gearmotor



ITEM 5-1883

\$11.95

• New, SPG Co. model ISG-31315FKA (P/N 40384rG). Inline gearmotor. Originally built for timer controls on water softeners. Aluminum gear housing. Four 10-32 UNF tapped bolt hole face mount on 1 1/2" x 1 1/2" centers.

SPECIFICATIONS

- Speed 3.5 RPM
- Voltage 115 AC
- Amperage 1/2 Amp
- Rotation CW
- Duty Intermittent (30 seconds on/30 seconds off)
- Enclosure Open
- Mount Face
- Shafts Front-5/8" dia. x 0.7", Rear-1/4" dia. x 3/4", both have cross holes
- Size 2 1/4" x 3" x 5"
- Shpg. 3 lbs.

62 RPM, 115 VAC

ITEM 5-1768

\$8.99

• New, Brevel 782 inline gearmotor. T.P.I. Model 8T-115-7AM209A10. Aluminum gear housing. Shaded pole motor. Mounting holes tapped 8-32.

SPECIFICATIONS

- Speed 62 RPM
- Voltage 115 AC
- Amperage 4 Amps
- Rotation CW
- Duty intermittent
- Enclosure open
- Mnt. 4 holes on back face
- Shaft 1/2" dia. x 1 1/2" hollow threaded 7/16-20 LH
- Size 2 1/2" x 2" x 5 3/4"
- Shpg. 3 lbs.

80 RPM, 120 VAC

ITEM 5-1572

\$8.95

• New BREVEL Model Y. Inline parallel shaft gearmotor.

SPECIFICATIONS

- RPM 80
- Voltage 120 VAC
- Amps 2 (no load)
- Rotation CW
- Duty intermittent
- 4 hole face mount 1 1/8" x 1 1/4" ctrs.
- Shaft 3/8" diam. x 3/4" w/ flat
- Size 3 1/8" x 2 1/2" x 4 3/8"
- Shpg. 4 lbs.

100 RPM 115 AC

ITEM 5-1219

\$4.95

• New MERKLE-KORFF.

SPECIFICATIONS

- RPM 100
- Voltage 115
- Amps 1.25
- Torque 4 in. lbs.
- Rotation CCW
- Duty intermittent
- Shaft 5/16" diam. x 1/2" w/crosshole
- Mount front
- Size 2 3/4" x 2 1/2" x 5 1/4"
- Shpg. 3 lbs.

135 RPM, 115 VAC

ITEM 5-1504

\$5.99

• New MOLON LIM-30146-3. Inline gearmotor. 1.25 mFd capacitor included.

SPECIFICATIONS

- RPM 135
- Voltage 115 AC
- Amps 0.1
- HP 1/130
- Torque 58 in-oz
- Rotation reversible
- Duty intermittent
- Shaft 1/4" dia. x 3/8" w/flat
- Mount two bolt face 2 1/16" ctrs.
- Size 1 7/8" x 2 3/8" x 2 3/8"
- Shpg. 1 1/2 lbs.

