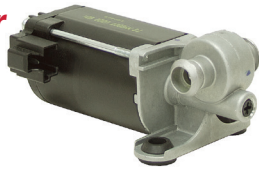


500 RPM, 12 VDC Gearmotor



ITEM 5-1816
\$15.95

• New, permanent magnet, right angle, worm gear reduction gearmotor. Built for seat back adjustment in vehicles. Cast aluminum gear housing with steel motor frame. Hollow square thru-drive output shaft. Two bolt rubber isolation mount. Two pin male integral Packard Power Connection.

SPECIFICATIONS

- Speed 500 RPM no load
- Speed 220 RPM at rated torque
- Voltage 12 DC
- Amperage 22 Amps at rated torque
- Torque 16 in-lbs
- Rotation reversible
- Duty intermittent
- Enclosure TENV
- Mount 3/8" dia. two bolt on 2.2" centers
- Hollow thru-shaft 5/16" (4 mm)
- Size 5 1/2" x 3 1/8" x 2 1/2"
- Shpg. 3 lbs.

1080 RPM 12 VDC Gearmotor



ITEM 5-1904
\$8.95

• New, GLOBE MOTORS model 415A431 compact inline gearmotor. Operates on 12-24 VDC.

SPECIFICATIONS

- Speed 1080 RPM (no load)
- Voltage 24 DC
- Amperage 0.07 A (no load)
- Torque 8 in.oz.
- Gear Ratio 6.3:1
- Rotation Reversible
- Duty Continuous
- Mount 3 holes on face M3
- Shaft 0.186" dia. x 0.69" w/flat
- Size 1.375" dia. x 2.75"
- Shpg. 1/2 lb.

162 RPM 24 Volt DC Gearmotors



• New, AMT Schmid GmbH gearmotors with brake. Originally made for wheel chairs as a right side drive motor. Release shaft on gearbox to engage/disengage output shaft to free wheel.

SPECIFICATIONS

- Speed 162 RPM no load max (nominal performance rating)
- Voltage Motor 24 VDC
- Voltage Brake 12 VDC
- Amperage 4.5 Amps no load
- Torque 796 in.lbs.
- Torque Brake 530 in. lbs.
- Gear Ratio 26.2
- Rotation Reversible
- Duty Intermittent
- Enclosure TEFC
- Base Mount 6 bolt tapped M6x1
- Shaft 23.5mm max. dia. x 35.8mm 14.25° tapered w/woodruff key and M12x1.75 threaded end
- Size 14" x 3 1/2" x 5"
- Shpg. 19 lbs.

500 RPM, 12 VDC Gearmotor



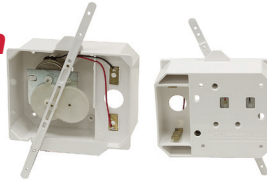
ITEM 5-1754
\$9.99

• New, permanent magnet, right angle gearmotor. Cast aluminum gear housing with steel motor frame. Hollow square thru-drive output shaft. Two bolt rubber isolation mount.

SPECIFICATIONS

- Speed 500 RPM no load
- 250 RPM at rated torque
- Voltage 12 DC
- Amperage 16 Amps
- Torque 8.5 in-lbs
- Rotation reversible
- Duty intermittent
- Enclosure TENV
- Mount 3/8" dia. two bolt on 2.2" centers
- Hollow thru-shaft 5/16" (4 mm)
- Size 5 1/4" x 3 1/8" x 2 1/2"
- Shpg. 3 lbs.

1.5 VDC Animation Motor



ITEM 5-1692
\$3.99

• New, HANKSCRAFT MOTORS, battery operated motor with gear reduction driving a pivoting arm. Holes to mount hanging lightweight objects at each end of arm. Great for animation. Low torque output. Should be mounted flat. Operates on 1 D cell battery. Geartrain and battery exposed, no power switch (runs when battery is in place).

SPECIFICATIONS

- Voltage 1.5 VDC
- Cycles/minute 33
- Arm lgth. 7 5/8"
- Rotation reversible
- Arm rotation 45°
- Arm travel 3 3/8" side 1 15/8" side 2
- Size 4 3/4" x 4 5/8" x 1 7/8"
- Shpg. 1/2 lb.

ITEM 5-1919-R **\$99.95**

RH model 013552

ITEM 5-1919-L **\$99.95**

LH model 013551

52" Stroke 5620 lbs. 24 Volt DC Linear Actuator



ITEM 5-1842 **\$189.95**

• NEW TAKE-OFF, SolFocus P/N 350-000266-000 screw jack linear actuator. Original application for elevation adjustment on large solar panels. Features include female trunnion mount on gearbox, swivel eye rod end, ACME thread style screw, 2 3/8" metal square tube screw cover, mounting holes on screw cover to install plunger style limit switches, expanding billow screw cover and permanent magnet TENV gearmotor. Rated for 24 volts but will operate on 12 volts at reduced speed and output. Ships in two boxes, requires re-assembly.

SPECIFICATIONS

- Stroke 52 5/8"
- Voltage 24 VDC
- Force 25kN (5620 lbs)
- Extension Speed No Load 7 3/8" in/min
- Gear Ratio 25 input shaft revolutions per 1" of stroke
- Duty Intermittent
- Trunnion Mount Pin Size 7/8" dia meter female by 1" deep
- Rod End Pin Size 7/8"
- Size 7 5/4" x 5 1/8" x 19 5/8"
- Shpg. 99 lbs.

ITEM 5-1842-A **\$129.95**

• Same as ITEM 5-1842 above except used.

Toy Car Drive Gearmotors

• New Take-Offs, gearmotor made for use in kid's vehicles. High output torque. Output is 2 1/2" diameter 6 lug wheel drive hub that rotates around a fixed center spindle with an inside hole for axle.



ITEM 5-1898-W
ITEM 5-1898-BK
ITEM 5-1898-R
ITEM 5-1898-B
ITEM 5-1898-P
\$9.99

SPECIFICATIONS

- Speed 70 RPM
- Voltage 12 VDC
- Amperage 0.7 Amps no load
- Rotation Reversible
- Duty Intermittent
- Shaft 2 1/2" diameter 6 lug hub
- Spindle Bore 3/8"
- Size 6 1/2" x 3 5/8" x 3"
- Shpg. 2 lbs

ITEM 5-1897-L
ITEM 5-1897-R
\$12.99

SPECIFICATIONS

- Speed 75 RPM no load
- Voltage 12 VDC
- Amperage 1.2 Amps no load
- Rotation Reversible
- Duty Intermittent
- Shaft 2 1/2" diameter 6 lug hub
- Spindle Bore 1/2"
- Size 7 3/8" x 4 1/4" x 3 3/8"
- Shpg. 3 lbs

140 RPM 4.5 VDC Gearmotor



ITEM 5-1795
\$9.95

• New, SOURCE ENGINEERING inline permanent magnet gearmotor. Low voltage and compact size.

SPECIFICATIONS

- Speed 140 RPM
- Voltage 4.5 DC
- Amperage 0.21 Amps
- Torque 12 in. oz.
- Rotation reversible
- Duty continuous
- Mount four M3 holes face
- Shaft 6mm dia. x 15mm w/flat
- Size 2 1/4" dia. x 1 1/2"
- Shpg. 1 lb.