

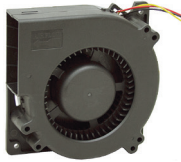
**32 CFM,
12 VDC**

ITEM 16-1455
\$8.95

• New, 12 volt fan. Model 12032HB-TE. Quiet operation. Flat mounting on back side. Three thru holes for mounting with brass inserts.

SPECIFICATIONS

- Flow 32 CFM max.
- Voltage 12 DC
- Amperage 0.62 Amps
- Power 7.5 watts
- Speed 2400 RPM
- Inlet 3" dia.
- Outlet 1 1/8" x 2 1/4"
- Blower wheel 120mm x 32mm
- Size 4 3/4" x 4 3/4" x 1 1/4"
- Shpg. 1 lb.



**38 CFM,
10 VDC**

ITEM 16-1505
\$5.95

• New, SONY Model SFF22C fan. Brushless design with lubricated ball bearing. Flat mounting on back side. 3 thru holes for mounting.

SPECIFICATIONS

- Flow 38 CFM max.
- Voltage 10 DC
- Amperage 0.51 Amps
- Inlet 2 3/8" dia.
- Outlet 1 3/8" x 1 1/2"
- Blower wheel 3" dia. x 1 1/2"
- Size 4" x 4" x 1 1/2"
- Shpg. 1 lb.



**200 CFM,
12 VDC
Blower**

ITEM 16-1257
\$29.95

• New WELLINGTON ELECTRIC Co. Model 5012203. Squirrel cage blower. Plastic housing with metal blower wheel. Housing is open on intake side, requires addition of a cover with inlet opening (not included).

SPECIFICATIONS

- CFM 200
- Voltage 12 DC
- Amps 9
- RPM 3500
- Duty continuous
- Blower wheel 5 1/2" diam. x 2 1/4"
- Outlet 3 3/8" x 3"
- Mnt. 6 bolt on open side
- Size 9" x 6" x 8 1/2"
- Shpg. 8 lbs.



**12 VDC
Liquid
Cooling
System**

ITEM 16-1361

\$39.95

• New, SANYO DENKI SAN ACE MC Model 109-LC1-003 CPU-cooler. Liquid cooling system built for removing heat from high performance computer CPU's. Consists of an aluminum, fan-cooled radiator, a small coolant pump and a copper cold plate. Mount the cold plate to a warm surface to remove heat from the surface. Fan speed can be controlled based on temperature.

SPECIFICATIONS

- Voltage 12 DC
- Amperage Fan 0.30 Amps Pump 0.13 Amps
- Radiator area 6 3/8" x 4 5/8"
- Thermal resistance 0.22 K/W at max fan RPM
- Liquid coolant Propylene glycol solution
- Two bolt mount 183 mm (7.20") ctrs.
- Overall size 3 1/8" x 7" x 7 1/8"
- Cold-Plate 43 x 55 x 15 mm (1.69" x 2.17" x 0.59")
- Shpg. 5 lbs.



**552 CFM 12
VDC Centrifugal
Blower**

ITEM 16-1541
\$59.95

• New, ROTOM model R7-RB522 centrifugal blower. Ideal blower for cooling, heating, ventilating and other general purpose air delivery. Metal housing and blower wheel. Dynamically balanced for smooth and quiet operation.

SPECIFICATIONS

- Flow 552 CFM open flow
- Flow 462 CFM at 0.2 inches static pressure
- Flow 358 CFM at 0.5 inches static pressure
- Voltage 12 DC
- Amperage 9.4 amps full load
- Speed 1630 RPM
- Duty Continuous
- Mount 6 hole flange 8 1/16" x 4 3/8" outside perimeter center-center
- Bearings Ball
- Inlets 4 9/16" diameter
- Outlet 8 1/16" x 3 3/4"
- Size 9" x 9 7/8" x 10 1/4"
- Shpg. 12 lbs.



**12-28 VDC
Axial Fan**

ITEM 16-1553
\$9.95

• New, PAPST type 6224N/17HT axial fan. Ball bearings. Metal housing with plastic impellor. 12" cord with 5 pin connector plug. Discharges over struts.

SPECIFICATIONS

- Air Flow 282.5 CFM max
- Voltage (rated) 24 VDC, useable on 12-28 VDC
- Amperage 1.1 Amps
- Power 26 Watts
- Sound Level 61 dB
- Mount 4 thru-holes
- Blade 5 5/8" dia.
- Number of blades 7
- Size 6 3/4" dia. x 2"
- Shpg. 3 lbs.



**48 Volt DC
Motorized
Impellor**

ITEM 16-1484
\$7.99

• New ASPEN MOTION TECHNOLOGIES. Backward curved motorized impellor. Use for cabinet cooling, air filtration systems. Air is discharged in 360 degree pattern around impellor. Narrow profile and vertical or horizontal mount to save space. Steel construction. Quiet operation with high airflow.

SPECIFICATIONS

- Flow ?? CFM max
- Voltage 48 DC (32-60 volt range)
- Current 2.75 Amps
- Speed 3440 RPM
- Mounting Flange Four tapped holes on motor
- Inlet 6" dia.
- Outlet 360 degrees around perimeter
- Size 8" dia. x 2 3/4"
- Shpg. 5 lbs.



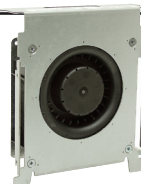
**32 CFM,
12 VDC**

ITEM 16-1456
\$8.95

• New, EBMPAPST Model RG90-18/12N. Fiberglass reinforced plastic with steel mounting brackets. Max. temp. 135° F.

SPECIFICATIONS

- Flow 32 CFM max.
- Static pressure 0.1" H₂O
- Voltage 12 DC
- Amperage 580 mA
- Power 6 watts
- Noise 55 db
- Duty continuous
- Inlet 3.15" dia.
- Outlet 1 1/4" x 2 7/8"
- Size 5.3" x 5.3" x 1.5"
- Shpg. 2 lbs.



**200 CFM
12 Volt
DC Fan**

ITEM 16-1556
\$5.95

• New, JARO fan model AD1212HB-F92GP. Sound level 61 db. Ball bearing. Thermoplastic housing and impeller.

SPECIFICATIONS

- Flow 200 CFM max.
- Voltage 12 DC
- Amps 1.95
- Speed 3100 RPM
- Blades 9
- Mount 105mm sq.
- Size 120mm x 120mm x 38mm
- Shpg. 1/2 lb.



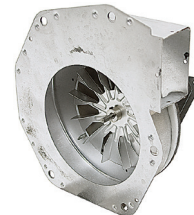
**12 VDC Draft
Induction
Blower**

ITEM 16-1390
\$19.99

• New, draft induction blower. Ideal for use on corn or wood stoves, furnaces and other general purpose air movement. Metal housing and blower wheel.

SPECIFICATIONS

- Voltage 12 DC
- Amperage 0.8 Amps
- Power 8 Watts
- Speed 2000 RPM
- Noise 74 dB
- Duty continuous
- Mount 5 hole flange
- Inlet 5" diam.
- Outlet 1 9/16" x 1 11/16"
- Size 9 3/4" x 7 7/8" x 5 1/8"
- Shpg. 6 lbs.



**12 VDC
Jet Air
Blower**

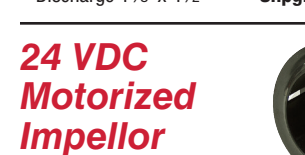
ITEM 16-986

\$6.99

• New HUPP. High efficiency, oscillating grille, adjustable bracket for vertical or horizontal mounts. High impact plastic. Comes with cigarette lighter plug, power cord, mounting hardware and instructions.

SPECIFICATIONS

- 12 VDC
- 1.2 amp
- Grill intake 4 1/2" x 3"
- Discharge 1 1/8" x 4 1/2"
- Blower wheel 2 1/2" x 4 3/4"
- Size 3 1/2" diam. x 10"
- Shpg. 4 lbs.



**24 VDC
Motorized
Impellor**

ITEM 16-1482
\$7.99

• New MCCLEAN COOLING Model DB400-2420S6. Backward curved motorized impellor. Use for cabinet cooling, air filtration systems. Air is discharged in 360° pattern around impellor. Narrow profile and vertical or horizontal mount to save space. Plastic construction. Quiet operation with high airflow.

SPECIFICATIONS

- Flow 115 CFM
- Voltage 24 VDC
- Amps 1.4
- Mounting flange triangular with hole in each corner
- Speed 5900 RPM (max)
- Inlet 2 3/4" dia.
- Outlet 360° / perimeter
- Size 4" dia. x 2"
- Shpg. 2 lbs.

