

4 Gauge Battery Cables

- New.
- Terminal #1 Top post battery
- Terminal #2 Lug w/9/16" hole



ITEM	Color	Length	Shpg	Price
11-3669-12-B	Black	12 ft.	½ lb.	\$3.99
11-3669-12-R	Red	12 ft.	½ lb.	\$3.99
11-3669-15-B	Black	15 ft.	½ lb.	\$4.99
11-3669-15-R	Red	15 ft.	½ lb.	\$4.99
11-3669-19-B	Black	19 ft.	¾ lb.	\$5.99
11-3669-19-R	Red	19 ft.	¾ lb.	\$5.99
11-3669-30-B	Black	30 ft.	¾ lb.	\$6.99
11-3669-42-B	Black	42 ft.	¾ lb.	\$7.99

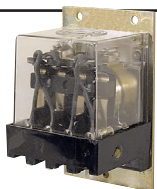
36 VDC 4PDT Relay

ITEM 11-2384
\$3.99

- Westcode 36 Volt DC relay. Like new condition.

SPECIFICATIONS

- 4PDT Contacts
- 25 amp capacity
- 36 Volt DC coil
- 295 ohms
- 3" x 2" x 3"
- Shpg 2 lbs



24 Volt DC 3PDT 10 Amp Relay

ITEM 11-1195
\$3.85

- Used. Coil 55 ohms. 10 amp at 125 VAC, 5 amp at 240 VAC. Clear plastic dust proof case w/slotted flange mount. Tiny lamp across the coil lights up when relay energizes. Removable diode shunt across relay coil. Size 1 7/8" x 1 1/2" x 1 1/2". Shpg. ¼ lb.



12 VDC SPDT Relay

ITEM 11-3222-RM
\$3.10

- Brand new. Ideal for auxiliary lights, motors. Plastic enclosure. Steel mounting tab.

SPECIFICATIONS

- Coil Voltage 12 volt DC
- Contacts SPDT
- Contact Ratings 14 VDC max 30 Amps break
- 40 Amps make
- Mounting Single hole
- Terminals ¼" spade
- Size 1" x 1" x 1 3/4"
- Shpg. ¼ lb.



12 VDC SPDT Relay

ITEM 11-3076
\$2.39

- New. 12 volt DC 43 ohm coil. Normally open 5 amp contacts. Grounds thru mounting bracket. Push on terminals. Size 1 1/2" x 1 1/8" x 7/8". Shpg. ¼ lb.



SPDT Relay w/Base

ITEM 11-3222
\$4.95

- New. Ideal for auxiliary lights, motors. Includes base socket with 11" leads.

SPECIFICATIONS

- Coil voltage 12 volt DC
- Contacts SPDT
- Mounting single hole
- Amp rating 30 break, 40 make
- Size 1" x 1" x 1 3/4"
- Shpg. ½ lb.



24 Volt DC SPDT Relay With Socket

ITEM 11-3664
\$3.95

- New. Song Chuan model 896H-1CH-S1 SPDT relay. Ideal for auxiliary lights, motors. Includes base socket with 11" leads.

SPECIFICATIONS

- Coil Voltage 24 volt DC
- Contacts SPDT
- Contact Rating 14 volt DC 20 break
- 15 make
- Mounting Single hole
- Size 1" x 1" x 1 3/4"
- Shpg. ½ lb.



Hand Held Remote Control

ITEM 11-3640
\$9.95

- New hand remote control switch with pistol grip.

SPECIFICATIONS

- Switch Type Rocker
- Contacts SPDT-CO
- Contact Rating 16 amps 125/250 Volt
- Action Momentary
- Switch Positions Three (on-off-on)
- Cord 3 conductor 10 ft.
- Connector 3 pin
- Size 3 1/4" x 4" x 6"
- Shpg. 1 lb.



Handlebar Mount Remote Switch

ITEM 11-3643
\$14.95

- New, handle bar mount switch for momentary use on winches. Integral switch guard in body. Rubber cover labeled for In/Out.

SPECIFICATIONS

- Contact SPDT-CO
- Contact Ratings 16 amps at 125 Volt
- Action Momentary
- Leads Red 3 Ft. Black & Green 8 Ft.
- Size 2" x 2" x 1"
- Shpg. 1 lb.



Generator Panel

ITEM 11-3646
\$6.95

- New generator panel. Electrical components are mounted on a steel panel. Use for generators, electrical panels, power center for a workbench, or remove the components to install in other applications.

SPECIFICATIONS

- One 120 Volt AC 15 amp 3-prong outlets
- One 120/240 Volt AC, 20 Amp, 4 conductor twist lock outlet (NEMA L14-20)
- Two 125/250 Volt AC, 20
- Amp, manual reset, circuit breakers
- 4 bolt mount on 6" x 1 3/4" bolt circle
- Overall 6 1/2" x 6 1/2" x 1 1/4"
- Shpg. 1 lb.



DC Motor Reversing Contactors

- Brand new, SPAL reversing polarity contactor. Ideal for controlling permanent magnet motors. Both output terminals rest at ground for dynamic braking in de-energized state. Splash resistant body with O-ring seals. Silver-plated contacts.

SPECIFICATIONS

- Contact ratings 5-30 VDC 100 amps max duty cycle 6mm studs
- 6 min. at max. cont. output
- Two hole mount 2 3/4" ctrs.
- 20% max duty cycle
- Coil terminals ¼" spade
- Motor & battery terminals
- Size 2 1/8" x 3 1/4"
- Shpg. 1 lb.



ITEM 11-3169-12
\$37.95

ITEM 11-3169-24
\$56.35

12 VDC Motor Reversing Contactor

ITEM 11-3149
\$43.80

- Brand new TROMBETTA Model 214-1231-A11 reversing polarity contactor. Ideal for controlling permanent magnet motors. Dynamic braking in de-energized state. Sealed plastic housing.

SPECIFICATIONS

- 12 VDC coil
- Contact ratings 75 amps for 5 min. max 125 amps for 30 sec. 150 amps in-rush
- 5 min. max ON time
- 20% max duty cycle
- Coil terminals ¼" spade
- Motor & battery terminals 5/16"-24 studs
- 2 bolt mount on 4 1/8" ctrs.
- Size 5" x 3 3/8" x 3"
- Shpg. 1 lb.



ITEM 11-3149-COVER
\$5.85

- Plastic cover for ITEM 11-3149 above. 2 hole mount. Shpg. 1/10 lb.

4 Position Fuse Block

ITEM 11-3661
\$1.99

- New, Calterm fuse block. Uses standard AGC/SFR glass fuses (not included).

SPECIFICATIONS

- Fuse Count 4
- Terminals ¼" spade
- Size 2 3/8" x 2 1/8" x 3/4"
- Shpg. ¼ lb.



115 VAC: 12 VDC 3 AMP Power Supply

ITEM 15-1204
\$4.95

- New CHALLENGER CABLE SALES model PS-2.1-12-3-DC-S1 power supply. Comcast ESP-3. UL listed. 7 ft wall cord. UL listed. 6 ft. output cord with 5.5mm barrel end.

SPECIFICATIONS

- Input 115 Volt AC, 60 Hz, 96 Watts
- Output 12 Volt DC, 3 Amps
- Overall size 4 1/2" x 2" x 1 1/4"
- Shpg. 1 lb

