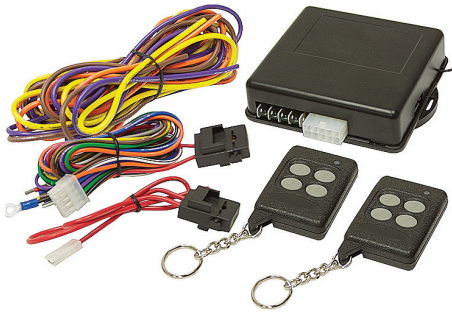


12 VDC Seven Channel Wireless Remote Control



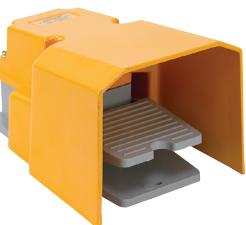
ITEM 11-3305

\$126.55

- Brand new. Wireless remote control receiver/transmitter combination. Each circuit is controlled separately from transmitter.
- Code learning feature on receiver for easy programming. Select activation as long as transmitter button is depressed or momentary pulse for channels 1, 2, 6 and 7.
- Ignition lockout option disables channels 1-4. Channels 1 and 2 allow for manual switch (not included) to activate in addition to remote transmitter.
- Operate from 12 Volt DC power supply or battery. Only draws 0.15 amps.
- 100 ft. range with clear line of sight. Includes 2 keychain 4-pushbutton transmitters and full.

SPECIFICATIONS

- Voltage 12 VDC
- Channel 1-2 output relay
- Relay contacts Rating 30 Amp max
- Relays SPDT (common N.O. connection)
- Channels 3-7 output -500 m.a.
- Connections Channel 1-2, spade terminals Channel 3-7 and power, 10 pin connector
- Mount two hole, 3 7/8" c/c
- Size 4 1/8" x 4" x 1 1/4"
- Shpg. 2 lbs.



Heavy Duty Foot Switch w/Guard

ITEM 11-3632

\$17.95

- Brand new TMAZTZ heavy duty foot switch. Features include momentary operation with SPDT switch, rugged cast aluminum construction and oversized guard opening.

SPECIFICATIONS

- Model TFS-502
- Contact Rating 15A, 125/250 VAC
- Actuation Force 7 lbs.
- Contacts SPDT
- Switch Action Momentary
- Finish Powder-painted safety orange
- Conduit Connection 1/2" NPT
- Nema Enclosure Type 2, 4, 13
- Mounting Pattern Triangular 3 3/8" x 7 1/4"
- Size 8 1/4" x 5 3/4" x 5"
- Shpg. 3 lbs.

Double Pedal Footswitch

ITEM 11-3633

\$39.95

- Similar to 11-3632 but with 2 pedals. Each pedal has a N.O./N.C. plunger switch. Size 8 1/4" x 9" x 6". Shpg 6 lbs.

12 Volt DC Reversing Wireless Remote Control



ITEM 11-3395
\$107.30

- Brand new. Wireless remote control to reverse polarity to equipment. Ideal for linear actuators or other permanent magnet motors. Waterproof receiver. Remotes have 2 buttons to control output. Code learning button on receiver with LED indicator. Very low current draw in standby. Heavy duty leads. High power radio gives over 150 foot range with a clear line of sight. Includes two keychain remote transmitters.

SPECIFICATIONS

- Input voltage 12 VDC
- Output 12 VDC polarity reversing
- Output current 40 Amp max
- Mount 2 tabs
- Size 3" x 3" x 1"
- Shpg. 3 lbs.



SPST Pushbutton Switch

ITEM 11-3637

\$1.99

- New, Arrow Hart model 80511E normally open momentary push-button switch. UL & CSA listed. Jam nut included.

SPECIFICATIONS

- SPST N.O. momentary switch
- Contact Ratings 3 Amps @ 120 VAC
- Mounts in 12mm dia. hole
- Solder terminals
- Shpg. 1/10 lb.



Pushbutton Switch

ITEM 11-3642

\$1.99

- New, flush mount pushbutton horn switch. Plated housing with 2 mounting slots. Screws included.

SPECIFICATIONS

- Contacts Normally Open
- Action Momentary
- Terminals Screw
- Button 7/8" dia.
- Panel Opening 1 5/8" dia.
- Size 2 5/8" x 1 5/8" x 3/4"
- Shpg. 1/4 lb

Two Button Start Stop Station



ITEM 11-3659
\$23.95

- Brand new, RELAY & CONTROL model SS-1. Steel housing with 2 momentary push buttons. Use with magnetic starters. NEMA 1 enclosure. Knockouts for 1" conduit on top/bottom.

SPECIFICATIONS

- Contact Rating 5 amps @ 240 VAC max.
- Top Button Green START
- Lower Button Red STOP
- Size 2 3/8" x 1 1/2" x 4"
- Shpg. 1 lb.

Top Quality Microswitches

- For limit switches, burglar alarm systems, etc. Shpg. 1/4 lb.

Standard Size Microswitches

Standard size 1 7/8" x 3/4" x 5/8".

Pushbutton



| ITEM | CONTACTS | AMP | PRICE |
|-------------|----------|-----|--------------|
| (A) 11-1901 | SPNO | 15 | \$.80 |
| (B) 11-3388 | SPNO | 15 | \$.99 |

Subminiature Microswitches

Subminiature size 1/4" x 3/4" x 1/2".



| ITEM | CONTACTS | AMP | PRICE |
|-------------|----------|-----|--------------|
| (A) 11-3322 | SPNO | 5 | \$.69 |



11-3512-A 11-3512-B 11-3512-C

3-Button Control Station

- Brand new, RELAY & CONTROL. Steel housing with 3 momentary push buttons. NEMA 1 enclosure. Knockouts for 1" conduit on top/bottom.

SPECIFICATIONS

- 240 VAC max.
- Size 2 3/8" x 1 1/2" x 5 1/16"
- Contact Rating 5 amps @
- Shpg. 1 lb.

ITEM 11-3512-A

\$21.55

- Model PBS-601
- Top Button Green OPEN
- Middle Button Green DOWN
- Lower Button Red STOP

ITEM 11-3512-B

\$21.55

- Model PBS-602
- Top Button Green UP
- Middle Button Green DOWN
- Lower Button Red STOP

ITEM 11-3512-C

\$21.55

- Model PBS-603
- Top Button Green FORWARD
- Middle Button Green REVERSE
- Lower Button Red STOP

SPST ON / OFF Pushbutton Switch

ITEM 11-3478

\$1.99



- New, push on-push off switch. Extended length mounting threads. Single hole mount.

SPECIFICATIONS

- Contact rating 6 amps 125 VAC, 3 amps 250 VAC
- Switch Action Push-on/ Push off
- Stem 3/8" dia. x 1 1/8" long
- Leads 18 gauge 6" long
- Size 2" x 7/8" x 3/4"
- Shpg. 1/4 lb.