



**13200 BTU
12 VDC
Cab Heater**
With 2 Speed Fan



ITEM 28-1826

\$231.60

• Brand new, MARADYNE Model H-400012 cab heater. Heater uses engine coolant to heat your cab. Mounts easily to floor of cab. 2 speed fan with speed control switch built into the housing. Four, rotatable, adjustable opening louvers. Glass-filled nylon housing, aluminum tube and fin heating core.

SPECIFICATIONS

- Heating output 13200 BTU/HR
- Air flow 200 CFM
- Hose fittings 5/8" dia. x 1 1/16" hose barb
- Blower motor voltage 12 VDC amperage 6 amps
- Mnt three 5/16"-18 x 1" studs
- Size 7 3/8" x 7 1/4" x 9 7/8"
- Shpg. 10 lbs.

**12 VDC Cab
Heater**
With 3 Speed Fan

12500 BTU



ITEM 28-1824
\$159.20

• Brand new, MARADYNE cab heater. Heater uses engine coolant to heat your cab. Mounts easily to wall or floor of cab. 3 speed fan. Directional airflow doors. Steel housing, aluminum tube and fin heating core. Comes with 3 speed fan switch.

SPECIFICATIONS

- Heating Output 12500 BTU/HR
- Air Flow 200 CFM
- Blower Motor Voltage 12 VDC
- Blower Motor Amperage 2.9 amps
- Hose Fittings 5/8" diam. x 1 1/2" hose barb
- Mount Three 5/16"-18 x 1" studs
- Size 7 1/16" x 7 3/8" x 7 1/16"
- Shpg. 11 lbs.

**Flat Document
Holders**



• Brand new. Molded plastic construction with two latches for lid and rubber seal to keep manuals, service records or other documents clean and dry. Four holes for mounting.

Holds 8 1/2" x 11" documents

ITEM 1-3970

\$12.70

SPECIFICATIONS

- Service Mate SM9000-8
- Document size 8 1/2" x 11" x 1"
- Label area 6 1/4" x 2 3/4"
- Mounting pattern 5 7/8" x 7"
- Size 14.5" x 11" x 2.135"
- Shpg. 3 lbs.

Holds 6" x 8" documents

ITEM 1-3972

\$7.80

SPECIFICATIONS

- Service Mate SM9000-16
- Document size 6" x 8" x 1"
- Label area 5" x 2 3/4"
- Mounting pattern 4 1/4" x 6"
- Size 11.2" x 8.25" x 1.95"
- Shpg. 3 lbs.

**Round Document
Holder**



ITEM 1-3971

\$7.80

• Brand new, Service Mate SM9000-14, holds rolled up 8 1/2" x 11" documents. Molded plastic construction with twist lock lid and rubber seal to keep manuals, service records or other documents clean and dry.

SPECIFICATIONS

- Document size 8 1/2" x 11" x 1"
- Label area 5 1/4" x 1 3/4"
- Size 3.7" dia. x 12.5"
- Shpg. 1/4 lb.



**Cab Heater
Installation Kit**

ITEM 28-1827
\$27.75

SPECIFICATIONS

- One, shut-off valve 3/8" NPTM x 5/8" hose barb
- One, 3/8" NPTM x 5/8" hose barb
- Two, 1/2" NPTM x 3/8" NPTF bushing
- Four, 5/8" hose clamps
- Shpg. 1/2 lb.

**12 Volt
Digital
Hourmeter**



ITEM 1-5081
\$17.30

• Brand new. Shows running time of equipment. Digital design, no moving parts. Spade terminals. Includes metal clamp mounting bracket to hold meter in place in a panel. Chrome bezel.

SPECIFICATIONS

- Operates on 12/24 volts DC
- Non-resettable
- Panel mount in 2" diameter hole
- Shpg. 1/4 lb.

**Round
Document
Holder**



ITEM 1-5713
\$3.99

• New, holds rolled up 8.5" x 11" documents. Molded plastic construction with twist lock lid and rubber seal to keep manuals, service records or other documents clean and dry. Mounting feet molded into body.

SPECIFICATIONS

- Document Size 8.5" x 11" x 2 1/2" (rolled up)
- Mounting tabs 2
- Size 3 3/4" dia. x 13"
- Shpg. 1/4 lb.

**60 MPH
Marine
Speedometer**



ITEM 28-1259
\$6.95

• New STEWART WARNER Model 598BTJ4. Marine speedometer

SPECIFICATIONS

- Reads 10-60 mph and 20-97 km/h
- 3 1/4" diam. black face
- 5/8" diam. hole in back for illumination bulb (not incl.)
- Hose barb for pilot tube connection
- Mounts in 3 3/8" hole
- 1 3/8" deep panel
- Shpg. 2 lbs.

**12 VDC
Electronic
Fuel Pumps**



• Brand new, FACET solid state electronic fuel pumps. For carbureted gas, diesel and blended fuel engines. **Not intended for any aircraft use.**

SPECIFICATIONS

- Voltage 12 Volts DC
- Amps 1.6
- Ports 1/8" NPT female
- Size 3" x 3 1/4" x 2 3/8"
- Shpg. 2 lbs.

12-24 VDC Back-Up Alarms

• Brand new, BUYERS back-up alarms. Plastic housing, epoxy sealed from moisture, dust and vibration. Self grounding. Back up alarm should be louder than background noise of all jobsites vehicle is used at. Meets OSHA, Bureau of Mines, GSA and all state regulations. Conforms to J994 criteria.

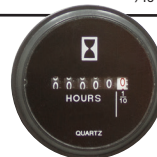
- Voltage 12-24 VDC. Mount two 1/4" holes on side or base. Shpg. 3/4 lb.



ITEM	Decibels	Size	Price
12-976	97 dB	4 1/4" x 2 3/4" x 2"	\$17.85
12-977	102 dB	4 5/16" x 2 7/8" x 2"	\$19.45
12-978	107 dB	4 3/16" x 3 3/8" x 2"	\$19.90

12 Volt Hourmeters

• Brand new. Shows running time of equipment. 12 volt DC (will operate on 10-80 VDC). Non-resettable. Shpg 1/4 lb.



ITEM 1-1238



ITEM 1-2506



ITEM 1-2507

Panel Opening And				
ITEM	Front Face	Mount	Rear Clearance Required	Price
1-1238	2 3/8" O.D.	Rear Clamp	2" dia. x 1 3/4"	\$20.40
1-2506	2 7/8" O.D.	3 holes in flange 2 1/2" B.C.	2" dia. x 1 3/4"	\$19.80
1-2507	2 1/8" x 1 1/4"	2 holes in flange 1 3/4" c/c	1" x 1 1/2" x 2 5/8"	\$19.80

Range Flow				
ITEM	Model	Pressure (PSI)	GPH	Price
28-1870	40104	1.5-4	25	\$50.05
28-1894 *	40102	1.5-4	25	\$61.45
28-1895	40106	4-7	32	\$49.80
28-1896	40185	9-11.5	32	\$59.95

* Same as 28-1870 but includes brass adapters to 5/16" ID hose and mounting hardware.