



Compact, Hi-Torque Hydraulic Motors **!**



• Brand new CHAR-LYNN “J” Series. Use on machine tools, augers, drilling/tapping machines, conveyors, sweepers, fans, etc. Compact size fits almost anywhere.

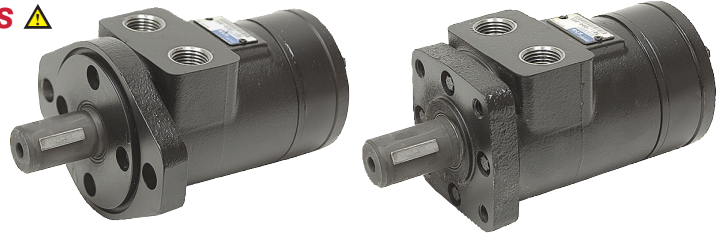
SPECIFICATIONS

- Rotation reversible
- Shaft 5/8" diam. x 1 1/8" w/ keyway
- Size 2 3/8" x 4 7/8"
- Ports SAE 6; Case drain SAE 3
- Mount 5 bolts on 1.775" diam. BC, 1.241" diam. pilot
- Shpg. 7 lbs.

ITEM	Model	Displ.	PSI		Torque in. lbs.		RPM		GPM		Price
			Cont.	Int.	Cont.	Int.	Cont.	Int.	Cont.	Int.	
9-1785	129-0001	0.50	2030	2400	141	164	1992	2458	4.5	5.5	\$295.55
9-1155	129-0002	0.79	2030	2400	225	263	1575	1859	5.5	6.5	\$298.00
9-1156	129-0003	1.21	2030	2400	333	405	1043	1226	5.5	6.5	\$301.30
9-1157	129-0004	1.93	1750	2175	446	546	650	767	5.5	6.5	\$309.55
9-8525	129-0458	3.0	1400	2030	549	743	393	465	5.5	6.5	\$341.70



Char-Lynn Hydraulic Motors **!**
H Series



• Brand new CHAR-LYNN H series hydraulic motors. Gerotor power element. Interchangeable with the following motor lines: Dynamic BMPH, Danfoss DH, White RS, Parker/Ross MG/TB.

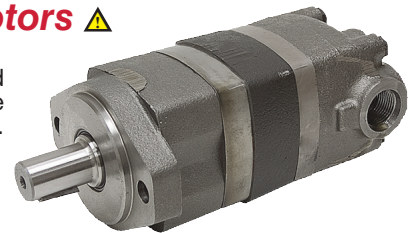
SPECIFICATIONS FOR H SERIES

- Reversible rotation
- Shaft 1" diam. woodruff keyed
- Ports 1/2" NPT

2 Bolt Mount		4 Bolt Mount		Displ.	PSI		Torque in. lbs.		RPM		GPM		Size	Shpg.
Item #	Price	Item #	Price		Cont.	Int.	Cont.	Int.	Cont.	Int.	Cont.	Int.		
981-1025	\$321.05	981-1001	\$295.20	2.8	1800	2400	650	876	969	1127	12	14	5 1/4" x 3 3/16" x 3 3/16"	13 lbs.
981-1026	\$311.50	981-1002	\$303.35	4.5	1800	2400	1044	1401	760	904	15	18	5 3/8" x 3 3/16" x 3 3/16"	13 lbs.
981-1027	\$320.50	981-1003	\$312.30	5.9	1800	2400	1368	1829	585	701	15	18	5 1/2" x 3 3/16" x 3 3/16"	14 lbs.
981-1028	\$369.40	981-1004	\$361.25	9.7	1650	2250	2059	2824	353	471	15	20	5 13/16" x 3 3/16" x 3 3/16"	15 lbs.
981-1029	\$384.90	981-1005	\$376.75	11.3	1600	2150	2343	3151	304	405	15	20	6" x 3 3/16" x 3 3/16"	15 lbs.
981-1030	\$379.20	981-1006	\$371.05	14.1	1450	2000	2669	3671	243	324	15	20	6 1/4" x 3 3/16" x 3 3/16"	16 lbs.
981-1031	\$400.40	981-1007	\$392.25	17.9	1350	1800	3110	4121	192	256	15	20	6 9/16" x 3 3/16" x 3 3/16"	16 lbs.
981-1032	\$437.05	981-1008	\$428.90	22.6	1250	1500	3604	4283	152	202	15	20	7" x 3 3/16" x 3 3/16"	16 lbs.



Char-Lynn 2000 Series Low Speed Motors **!**



• Brand new CHAR-LYNN 2000 series hydraulic motors. Geroler power element. Tapered roller bearings on output shaft for high axial and radial load capacity. Interchangeable with the following motor lines: Dynamic BMS, Danfoss OMS/OMSS, White RE/DH, Parker/Ross MB/TF.

SPECIFICATIONS FOR 2000 SERIES

- Reversible rotation
- Mount 2 bolt SAE A
- 1" dia. shafts woodruff keyed
- Ports SAE 12
- SAE 4 case drain
- 1 1/4" dia. shafts straight keyed

1" Shaft	1 1/4" Shaft	Displ.	PSI		Torque in. lbs.		RPM		GPM		Size	Shpg.	Price
ITEM #	ITEM #		Cont.	Int.	Cont.	Int.	Cont.	Int.	Cont.	Int.			
9-072-1037	9-072-1061	4.9	3000	4000	2065	3035	908	908	20	20	7 5/16" x 5 1/8" x 4 1/4"	28 lbs.	\$641.75
9-072-1038	9-072-1062	6.2	3000	4000	2630	3950	742	924	20	25	7 1/2" x 5 1/8" x 4 1/4"	28 lbs.	\$630.35
9-072-1039	9-072-1063	8.0	3000	4000	3420	4970	576	720	20	25	7 3/4" x 5 1/8" x 4 1/4"	28 lbs.	\$672.75
9-072-1040	9-072-1064	9.6	3000	3750	4040	5040	477	713	20	30	7 3/4" x 5 1/8" x 4 1/4"	28 lbs.	\$659.60
9-072-1041	9-072-1065	11.9	3000	3750	4780	5890	385	577	20	30	8" x 5 1/8" x 4 1/4"	28 lbs.	\$649.85
9-072-1042	9-072-1066	14.9	3000	3750	5850	7250	308	462	20	30	8 3/8" x 5 1/8" x 4 1/4"	29 lbs.	\$663.65
9-072-1043	9-072-1067	18.7	3000	3750	6750	7820	246	365	20	30	8 7/8" x 5 1/8" x 4 1/4"	31 lbs.	\$680.70
9-072-1044	9-072-1068	24.0	2250	2500	6840	8170	191	287	20	30	9 7/16" x 5 1/8" x 4 1/4"	32 lbs.	\$707.55