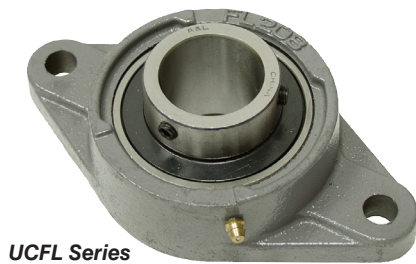
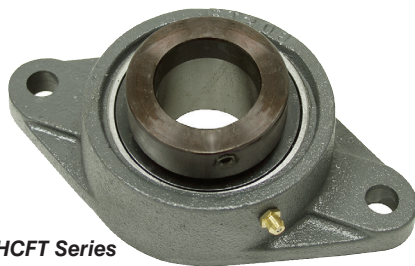


2 Bolt Flange Bearings

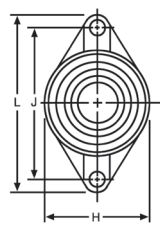
• Brand new 200 series normal duty flange bearings. Cast iron construction with self-aligning ball bearing insert and grease zerk.



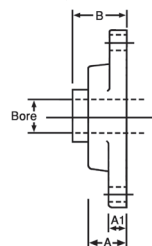
UCFL Series



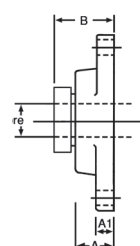
HCFT Series



Front View
Both Series



Side UCFL



Side HCFT

| | | UCFL Series Two Set Screws, No Lock Collar | | | | | | | | HCFT Series Eccentric Locking Collar w/Set Screws | | | | | | | | | |
|----------|------------|---|-------|-------|-------|-------|-------|--------|------|--|---------|-------|-------|-------|-------|-------|-------|------|-------|
| | | Dimensions | | | | | | | | Dimensions | | | | | | | | | |
| Bore | ITEM | Price | A | A1 | B | H | J | L | Bolt | ITEM | Price | A | A1 | B | H | J | L | Bolt | Shpg. |
| 1/2" | 1-201-08-2 | \$10.05 | 1.004 | 0.433 | 1.312 | 2.362 | 3.543 | 4.449 | 3/8 | N/A | - | - | - | - | - | - | - | - | 3 |
| 5/8" | 1-202-10-2 | \$10.05 | 1.004 | 0.433 | 1.312 | 2.362 | 3.543 | 4.449 | 3/8 | N/A | - | - | - | - | - | - | - | - | 3 |
| 3/4" | 1-204-12-2 | \$ 9.60 | 1.004 | 0.433 | 1.312 | 2.362 | 3.543 | 4.449 | 3/8 | 1-204-12-2-C | \$10.70 | 1.161 | 0.591 | 1.791 | 2.375 | 3.543 | 4.429 | 3/8 | 3 |
| 7/8" | 1-205-14-2 | \$11.00 | 1.063 | 0.512 | 1.405 | 2.677 | 3.898 | 5.118 | 7/16 | 1-205-14-2-C | \$12.15 | 1.181 | 0.591 | 1.807 | 2.756 | 3.898 | 4.843 | 7/16 | 3 |
| 15/16" | 1-205-15-2 | \$11.00 | 1.063 | 0.512 | 1.405 | 2.677 | 3.898 | 5.118 | 7/16 | 1-205-15-2-C | \$12.15 | 1.181 | 0.591 | 1.807 | 2.756 | 3.898 | 4.843 | 7/16 | 3 |
| 1" | 1-205-16-2 | \$11.00 | 1.063 | 0.512 | 1.405 | 2.677 | 3.898 | 5.118 | 7/16 | 1-205-16-2-C | \$12.15 | 1.181 | 0.591 | 1.807 | 2.756 | 3.898 | 4.843 | 7/16 | 3 |
| 1 1/8" | 1-206-18-2 | \$13.75 | 1.221 | 0.512 | 1.583 | 3.150 | 4.606 | 5.827 | 7/16 | 1-206-18-2-C | \$17.00 | 1.280 | 0.630 | 1.972 | 3.228 | 4.587 | 5.591 | 7/16 | 4 |
| 1 3/16" | 1-206-19-2 | \$13.75 | 1.221 | 0.512 | 1.583 | 3.150 | 4.606 | 5.827 | 7/16 | 1-206-19-2-C | \$17.00 | 1.280 | 0.630 | 1.972 | 3.228 | 4.587 | 5.591 | 7/16 | 4 |
| 1 1/4" | 1-206-20-2 | \$13.75 | 1.221 | 0.512 | 1.583 | 3.150 | 4.606 | 5.827 | 7/16 | 1-206-20-2-C | \$17.00 | 1.280 | 0.630 | 1.972 | 3.228 | 4.587 | 5.591 | 7/16 | 4 |
| 1 1/4" | 1-207-20-2 | \$15.05 | 1.339 | 0.551 | 1.748 | 3.543 | 5.118 | 6.339 | 1/2 | 1-207-20-2-C | \$17.85 | 1.417 | 0.669 | 2.098 | 3.701 | 5.118 | 6.221 | 1/2 | 5 |
| 1 5/16" | 1-207-21-2 | \$15.05 | 1.339 | 0.551 | 1.748 | 3.543 | 5.118 | 6.339 | 1/2 | 1-207-21-2-C | \$17.85 | 1.417 | 0.669 | 2.098 | 3.701 | 5.118 | 6.221 | 1/2 | 5 |
| 1 3/8" | 1-207-22-2 | \$15.05 | 1.339 | 0.551 | 1.748 | 3.543 | 5.118 | 6.339 | 1/2 | 1-207-22-2-C | \$17.85 | 1.417 | 0.669 | 2.098 | 3.701 | 5.118 | 6.221 | 1/2 | 5 |
| 1 7/16" | 1-207-23-2 | \$15.05 | 1.339 | 0.551 | 1.748 | 3.543 | 5.118 | 6.339 | 1/2 | 1-207-23-2-C | \$17.85 | 1.417 | 0.669 | 2.098 | 3.701 | 5.118 | 6.221 | 1/2 | 5 |
| 1 1/2" | 1-208-24-2 | \$18.05 | 1.417 | 0.551 | 2.016 | 3.937 | 5.669 | 6.890 | 1/2 | 1-208-24-2-C | \$21.05 | 1.535 | 0.669 | 2.319 | 4.055 | 5.650 | 6.772 | 1/2 | 6 |
| 1 5/8" | 1-209-26-2 | \$22.00 | 1.496 | 0.630 | 2.055 | 4.252 | 5.827 | 7.402 | 9/16 | 1-209-26-2-C | \$24.85 | 1.575 | 0.709 | 2.319 | 4.252 | 5.847 | 7.087 | 9/16 | 7 |
| 1 11/16" | 1-209-27-2 | \$22.00 | 1.496 | 0.630 | 2.055 | 4.252 | 5.827 | 7.402 | 9/16 | 1-209-27-2-C | \$24.85 | 1.575 | 0.709 | 2.319 | 4.252 | 5.847 | 7.087 | 9/16 | 7 |
| 1 3/4" | 1-209-28-2 | \$22.00 | 1.496 | 0.630 | 2.055 | 4.252 | 5.827 | 7.402 | 9/16 | 1-209-28-2-C | \$24.85 | 1.575 | 0.709 | 2.319 | 4.252 | 5.847 | 7.087 | 9/16 | 7 |
| 1 7/8" | 1-210-30-2 | \$27.75 | 1.575 | 0.630 | 2.150 | 4.528 | 6.181 | 7.756 | 9/16 | 1-210-30-2-C | \$30.30 | 1.772 | 0.787 | 2.602 | 4.488 | 6.181 | 7.480 | 9/16 | 8 |
| 1 15/16" | 1-210-31-2 | \$27.75 | 1.575 | 0.630 | 2.150 | 4.528 | 6.181 | 7.756 | 9/16 | 1-210-31-2-C | \$30.30 | 1.772 | 0.787 | 2.602 | 4.488 | 6.181 | 7.480 | 9/16 | 8 |
| 2" | 1-210-32-2 | \$27.75 | 1.575 | 0.630 | 2.150 | 4.528 | 6.181 | 7.756 | 9/16 | 1-210-32-2-C | \$30.30 | 1.772 | 0.787 | 2.602 | 4.488 | 6.181 | 7.480 | 9/16 | 8 |
| 2" | 1-211-32-2 | \$33.15 | 1.693 | 0.709 | 2.299 | 5.118 | 7.244 | 8.819 | 5/8 | 1-211-32-2-C | \$37.95 | 1.890 | 0.827 | 2.937 | 5.039 | 7.244 | 8.543 | 5/8 | 9 |
| 2 1/8" | 1-211-34-2 | \$33.15 | 1.693 | 0.709 | 2.299 | 5.118 | 7.244 | 8.819 | 5/8 | 1-211-34-2-C | \$37.95 | 1.890 | 0.827 | 2.937 | 5.039 | 7.244 | 8.543 | 5/8 | 9 |
| 2 3/16" | 1-211-35-2 | \$33.15 | 1.693 | 0.709 | 2.299 | 5.118 | 7.244 | 8.819 | 5/8 | 1-211-35-2-C | \$37.95 | 1.890 | 0.827 | 2.937 | 5.039 | 7.244 | 8.543 | 5/8 | 9 |
| 2 1/4" | 1-212-36-2 | \$42.55 | 1.890 | 0.709 | 2.704 | 5.512 | 7.953 | 9.843 | 5/8 | 1-212-36-2-C | \$47.20 | 2.087 | 0.827 | 3.181 | 5.433 | 7.953 | 9.331 | 5/8 | 12 |
| 2 3/8" | 1-212-38-2 | \$42.55 | 1.890 | 0.709 | 2.704 | 5.512 | 7.953 | 9.843 | 5/8 | 1-212-38-2-C | \$47.20 | 2.087 | 0.827 | 3.181 | 5.433 | 7.953 | 9.331 | 5/8 | 12 |
| 2 7/16" | 1-212-39-2 | \$42.55 | 1.890 | 0.709 | 2.704 | 5.512 | 7.953 | 9.843 | 5/8 | 1-212-39-2-C | \$47.20 | 2.087 | 0.827 | 3.181 | 5.433 | 7.953 | 9.331 | 5/8 | 12 |
| 2 1/2" | 1-213-40-2 | \$56.05 | 1.969 | 0.787 | 2.744 | 6.102 | 8.268 | 10.158 | 3/4 | N/A | - | - | - | - | - | - | - | - | 15 |
| 2 3/4" | 1-214-44-2 | \$61.50 | 2.126 | 0.787 | 2.968 | 6.299 | 8.504 | 10.433 | 3/4 | N/A | - | - | - | - | - | - | - | - | 17 |
| 2 15/16" | 1-215-47-2 | \$75.25 | 2.205 | 0.787 | 3.093 | 6.496 | 8.858 | 10.827 | 3/4 | N/A | - | - | - | - | - | - | - | - | 18 |
| 3" | 1-215-48-2 | \$75.25 | 2.205 | 0.787 | 3.093 | 6.496 | 8.858 | 10.827 | 3/4 | N/A | - | - | - | - | - | - | - | - | 18 |

Flange Bearings



• Brand new. Two bolt stamped steel housing with sealed self aligning ball bearing. Inner race with 2 set screws.

| ITEM | Bore | Centers | Bolts | Uses | |
|--------|--------|----------|-------|---------|---------|
| | | | | Shpg. | Price |
| 1-3031 | 1/2" | 2 1/2" | 1/4" | 1/2 lb. | \$9.25 |
| 1-1869 | 5/8" | 2 1/2" | 1/4" | 1/2 lb. | \$9.25 |
| 1-2386 | 3/4" | 2 13/16" | 5/16" | 1/2 lb. | \$11.85 |
| 1-2387 | 1" | 2.992" | 5/16" | 1 lb. | \$12.30 |
| 1-2388 | 1 1/4" | 3 9/16" | 3/8" | 1 lb. | \$12.65 |



1-205-16-T



1-211-32-T

Take-Up Bearings

• Brand new, DURA-ROLL take-up bearings. Cast iron housing. Two set screws on inner race. Bearing has grease zerk. Additional specs on our website.

| UCT Series Two Set Screws, No Lock Collar | | | | | |
|---|----------|---------|-----------------|---------|---------|
| ITEM | Bore | Housing | Bore thru-lgth. | Shpg. | Price |
| 1-205-16-T | 1" | UCT205 | 1.338" | 2 lbs. | \$13.75 |
| 1-206-20-T | 1.25" | UCT206 | 1.5" | 3 lbs. | \$16.75 |
| 1-207-20-T | 1.25" | UCT207 | 1.69" | 4 lbs. | \$19.05 |
| 1-207-23-T | 1 7/16" | UCT207 | 1.69" | 4 lbs. | \$19.05 |
| 1-208-24-T | 1.5" | UCT208 | 1.937" | 6 lbs. | \$22.75 |
| 1-209-28-T | 1.75" | UCT209 | 1.937" | 6 lbs. | \$28.05 |
| 1-210-31-T | 1 15/16" | UCT210 | 2.03" | 6 lbs. | \$30.60 |
| 1-211-32-T | 2" | UCT211 | 2.19" | 10 lbs. | \$41.10 |