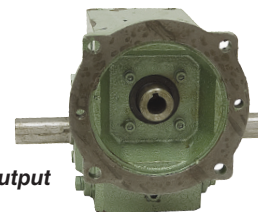


Single Output

• New. Cast iron gear reducers. Dimensionally interchangeable with Boston, Leeson, Winsmith and Morse. One piece housing, tapered roller bearings on output shaft. Not filled with oil. Four tapped mounting holes on top and bottom of box. Separate mounting base is included. Furnished with output shaft to right when viewed from motor flange. Easily changed to left output.



Dual Output

SINGLE OUTPUT	ITEM	Ratio	Motor Mount	Input HP	Output RPM	Output in. lbs. Torque	Output Shaft	Output Ctrline Ht	Mtg. Bolt Pattern	Shpg.	Price
		13-237-5-56C	5	56C	3.91	350	640	1 1/8" x 2 3/8"	2.50"	2 7/8" x 5"	41 lbs
	13-237-20-145TC	20	145TC	1.62	88	941	1 1/8" x 2 3/8"	2.50"	2 7/8" x 5"	41 lbs	\$119.95

DUAL OUTPUT	ITEM	Ratio	Motor Mount	Input HP	Output RPM	Output in. lbs. Torque	Output Shaft	Output Ctrline Ht	Mtg. Bolt Pattern	Shpg.	Price
		13-237-5-56C-DE	5	56C	3.91	350	640	1 1/8" x 2 3/8"	2.50"	2 7/8" x 5"	41 lbs
	13-262-5-182TC-DE	5	182TC	4.9	350	915	1 1/8" x 2 1/2"	2.94"	3 3/8" x 6 3/8"	56 lbs	\$139.95
	13-325-5-184TC-DE	5	184TC	9.1	350	1517	1 3/8" x 3 1/4"	3.50"	4" x 7 1/2"	93 lbs	\$189.95
	13-262-10-182TC-DE	10	182TC	3.4	175	1296	1 1/8" x 2 1/2"	2.94"	3 3/8" x 6 3/8"	56 lbs	\$139.95

• Keyed input shafts. Input can be from direct coupling, chain and sprocket or pulleys. Allows additional gear reduction between motor and box resulting in additional torque and lower output speeds.

SHAFT TO SHAFT	ITEM	Ratio	Input Shaft	Input HP	Output RPM	Output in. lbs. Torque	Output Shaft	Output Ctrline Ht	Mtg. Bolt Pattern	Shpg.	Price
		13-237-10-S	10	3/4" x 2 3/8"	2.72	175	851	1 1/8" x 2 3/8"	2.50"	2 7/8" x 5"	41 lbs
	13-237-30-S	30	3/4" x 2 3/8"	1.2	58	945	1 1/8" x 2 3/8"	2.50"	2 7/8" x 5"	41 lbs	\$119.95
	13-237-40-S	40	3/4" x 2 3/8"	1	44	937	1 1/8" x 2 3/8"	2.50"	2 7/8" x 5"	41 lbs	\$119.95
	13-237-50-S	50	3/4" x 2 3/8"	0.83	35	818	1 1/8" x 2 3/8"	2.50"	2 7/8" x 5"	41 lbs	\$119.95

Tapered Roller Bearing Cup and Cone Sets

• Brand new, tapered roller bearings with cup. Popular sizes.



Item #	Bearing #	Bore	O.D.	Width	Shpg	Price
1-5519	LM11749/LM11710	0.6875"	1.57"	0.545"	1/4 lb.	\$3.55
1-5520	LM11949/LM11910	0.75"	1.781"	0.61"	1/4 lb.	\$3.55
1-5521	M12649/M12610	0.8437"	1.9687"	0.69"	1/4 lb.	\$4.55
1-5525	LM12749/LM12710	0.8661"	1.781"	0.61"	1/4 lb.	\$4.65
1-5528	LM12749/LM12711	0.8661"	1.811"	0.61"	1/4 lb.	\$4.80
1-5527	L44643/L44610	1.00"	1.98"	0.56"	1/4 lb.	\$5.05
1-5522	L44649/L44610	1.0625"	1.98"	0.56"	1/4 lb.	\$5.05
1-5524	LM67048/LM67010	1.25"	2.328"	0.625"	1/2 lb.	\$4.60
1-5532	15123/15245	1.25"	2.4409"	0.75"	1/2 lb.	\$7.45
1-5526	L68149/L68110	1.378"	2.328"	0.625"	1/2 lb.	\$4.90
1-5529	L68149/L68111	1.378"	2.3622"	0.625"	1/2 lb.	\$4.75
1-5523	LM48548/LM48510	1.375"	2.5625"	0.71"	1/2 lb.	\$5.65
1-5530	JL69349/JL69310	1.4961"	2.4803"	0.6693"	1/2 lb.	\$7.45
1-5534	LM29749/LM29710	1.50"	2.5625"	0.71"	1/2 lb.	\$8.70
1-5531	LM501349/LM501310	1.625"	2.891"	0.77"	1/2 lb.	\$6.85
1-5533	25580/25520	1.75"	3.265"	0.9375"	1/2 lb.	\$8.60

Pillow Block Bearing



ITEM 1-205-16-PA-S **\$6.95**

• New 200 series pillow block bearing. Cast iron construction with self-aligning ball bearing insert and grease zerk. Two set screws on the inner race to lock shaft.

SPECIFICATIONS

- Bore 1"
- Bore Thru-Length 1.339"
- Center-Line Height 1.437"
- Bearing # UC205-16
- Housing # PA205
- Mount 2.20" bolt center
- Bolt Size 3/8-16 drilled/ tapped
- Overall Height 2.875"
- Shpg. 3 lbs.

2.25" Spherical Bearing



ITEM 1-11559 **\$19.95**

• New, CCVI Bearing Industries model GEZ57ES heavy duty spherical bearing. Use in cylinders designed for swivel ends.

SPECIFICATIONS

- Bore 2.25"
- Inner Ring Width 1.97"
- Spherical Dia. 3.5625"
- Outer Ring Width 1.687"
- Misalignment Angle 6 degrees
- Load limits
- Static Radial 191,250 (lbf)
- Dynamic Radial 63,000 (lbf)
- Shpg. 3 1/2 lbs.

Special Purchase Cast Iron Flange Bearings



2 Bolt Set Screw, No Lock Collar

ITEM	Bore	Shpg.	Price
1-207-23-2-S	1 7/16"	5 lbs.	\$9.95
1-215-47-2-S	2 15/16"	18 lbs.	\$9.95

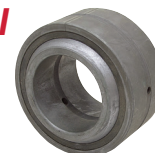
Eccentric Locking Collar w/ Set Screw

ITEM	Bore	Shpg.	Price
1-212-39-2-C-S	2 7/16"	11 lbs.	\$8.95
1-215-47-2-C-S	2 15/16"	18 lbs.	\$9.95

4-Bolt Eccentric Locking Collar w/ Set Screw

ITEM	Bore	Shpg.	Price
1-2196	50 mm	9 lbs.	\$9.95

2.5" Spherical Bearing



ITEM 1-114529 **\$24.95**

• New, CCVI Bearing Industries model GEZ63ES heavy duty spherical bearing. Use in cylinders designed for swivel ends.

SPECIFICATIONS

- Bore 2.5"
- Inner Ring Width 2.187"
- Spherical Dia. 3.9375"
- Outer Ring Width 1.875"
- Misalignment Angle 6 degrees
- Load limits
- Static Radial 234,000 (lbf)
- Dynamic Radial 77,625 (lbf)
- Shpg. 4 1/2 lbs.