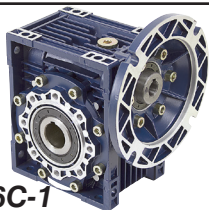


### 60:1 Right Angle Gear Reducer



**ITEM 13-1581-60-56C-1**  
**\$89.95**

• New, aluminum worm gear reducer. Aluminum alloy housings. Gearbox flange accepts NEMA 56C face mount electric motors. Pre-filled with synthetic oil. Two bearings on the input and output shafts, double lip oil seals, epoxy paint inside and outside for rust prevention, and hollow output bores to accept plug-in output shafts (sold separately).

**SPECIFICATIONS**

- Brand World Wide Electric
- Model Number CALM63-60/1-56C-1
- Box Size 63 mm Center Distance
- Gear Ratio 60:1
- Output RPM @ 1750 RPM Input 29 RPM
- Input HP (1.0 S.F.) 0.82 Hp Max
- Output Torque 1135 in.-lb. Max
- Over-Hung Load 985 lbs.
- Max Output Shaft Thrust Load 197 lbs. Max
- Efficiency 68 %
- Motor Mount 56C
- Hollow Output Bore 1" keyed, 1/4" keyway
- Top & Bottom Mount 100mm x 85mm
- Back Mount 130mm x 85mm
- Overall Size 6.87" x 6.5" x 8.5"
- Shpg. 13 lbs.

### Single Output Shaft for Size 63 Aluminum Reducers



**ITEM 13-1581-S-1**  
**\$9.95**

**SPECIFICATIONS**

- Part Number CALM63-S-1
- Diameter 1"
- Key Slot 1/4"
- Tapped 3/8-16
- Output Length 2.36"
- Overall length 7.2"

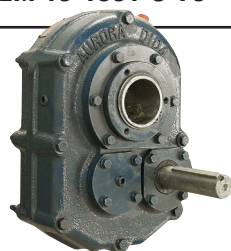
### 60:1 Right Angle Gear Reducer

**ITEM 13-1581-60-56C-75** **\$89.95**

Same as 13-1581-80-56c-1 Except 3/4" hollow output.

### 3/4 Diameter Output Shaft for 13-1581-60-56C-75

**ITEM 13-1581-S-75** **\$9.95**



### 9:1 Size 4 Shaft Mount Reducer

**ITEM 13-1497**

**\$429.95**

• New, AURORA shaft mount reducer. 9:1 gear ratio. Cast iron housing, high grade case hardened steel gears and shafts. Tapered roller bearings. Tapered bushing output (bushing not included). Torque arm included. Similar to Dodge or Browning. HP, torque and RPM specifications are for Class III service. May be used with accessories on previous page.

**SPECIFICATIONS**

- Model DID409
- Ratio 9:1
- Input Power 15 HP
- Output 132-200 RPM
- Torque 4811-3230 in.-lbs.
- Min Drive Pulley Diam 4.0"
- Input Shaft 1 7/16" diam. X 5" w/3/8" keyway
- Output Bore see table below
- Size 10 1/2" x 8" x 15"
- Shpg. 160 lbs.

Truck freight only.



### Right Angle Gearboxes

• Brand new. Right angle gearboxes. One piece cast iron gear case and bearing caps. Roller bearings. Ships without oil, user must add 1/3 quart of 80-90 W oil prior to use.

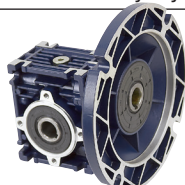


**SPECIFICATIONS FOR ALL**

- Ratio 1:1
- Input power 40 HP intermittent, 32 HP continuous
- Input speed 1800 RPM max.
- Output shaft 1" dia. x 2 1/4" w/1/4" keyway
- Mount four 3/8-16 tapped holes, 4 1/4" square
- Size 5 7/8" x 6 1/2" x 4 1/8"
- Shpg. 24 lbs.

ITEM	Input Shaft	Output rotation	Price
13-1423-KC	1" dia. x 2 1/2" w/1/4" keyway and 5/16" crosshole	Opposite of input	<b>\$161.80</b>
13-1423-SKC	1" diam. x 2 1/2" w/5/16" crosshole and 1/4" keyway	Same as input	<b>\$161.80</b>
13-1423-3K	1" dia. x 2 1/2" w/1/4" keyway	Dual shaft	<b>\$156.10</b>

### Aluminum Right Angle Worm Gear Reducer



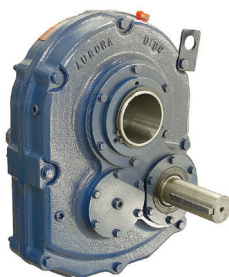
**ITEM 13-1578-80-56C** **\$79.95**

• Brand new, World Wide Electric aluminum worm gear reducer. Aluminum alloy housings. Gearbox flanges are designed to accept NEMA C-Face electric motors. Pre-filled with synthetic oil. Two bearings on the input and output shafts, double lip oil seals, epoxy paint inside and outside for rust prevention, and hollow output bores to accept plug-in output shafts (sold separately).

**SPECIFICATIONS**

- Brand World Wide Electric
- Model Number CALM30-80/1-56C
- Box Size 30 mm Center Distance
- Gear Ratio 80:1
- Output RPM @ 1750 RPM Input 22 RPM
- Input Hp (1.0 S.F.) 0.08 Hp Max
- Output Torque 109 in.-lb. Max
- Over-Hung Load 314 lbs.
- Max Output Shaft Thrust Load 63 lbs. Max
- Efficiency 45 %
- Motor Mount 56C
- Output Bore 5/8" keyed, 3/16" keyway
- Top & Bottom Mount 54mm x 44mm
- Back Mount 71mm x 44mm
- Overall Size 4.62" x 6.5" x 6.5"
- Shpg. 3 lbs.

### 9:1 Size 6 Shaft Mount Reducer



**ITEM 13-1498**  
**\$849.95**

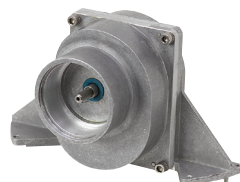
• New, AURORA shaft mount reducer. Service class III. Cast iron housing, high grade case hardened steel gears and shafts. Double lip seals. Metal reinforced double lips, spring loaded oil seals. Tapered roller bearings. Tapered bushing output (bushing not included). Torque arm included. Similar to DODGE TXT609 or BROWNING 307SMT09 shaft mount reducers. May be used with accessories on previous page.

**SPECIFICATIONS**

- Model DID609
- Ratio 9:1
- Input Power 30 HP
- Output 99-200 RPM
- Torque 4811-3230 in.-lbs.
- Min Drive Pulley Diam 4.0"
- Input Shaft 2 3/16" diam. X 5 1/2" w/1/2" keyway
- Output Bore see table below
- Size 16" x 9 1/2" x 21"
- Shpg. 330 lbs.

Truck freight only.

### 96:1 Inline Gear Reducer



**ITEM 13-1586**  
**\$39.95**

• New, THOMSON MICRON inline speed reducer. Aluminum housing.

**SPECIFICATIONS**

- Nominal Ratio 96:1
- Actual Ratio 95.98:1
- Output RPM @ 1800 RPM Input 18.75 RPM
- Input Shaft 1/4" dia. x 1/2" (no keyway or flat)
- Output Shaft 1/2" dia. x 5/8" long with dual flats
- Motor Mount 2" ID housing
- Base Mount Four 0.35" holes on 5.12" x 4.33" centers
- Size 7 3/16" x 3 1/8" x 4"
- Shpg. 3 lbs.

### 50:1 Gear Reducer



**ITEM 13-1594** **\$69.95**

• New, IPTS, right-angle worm gear reducer. Cast iron housing. Long output shaft. Mounts with thru holes on housing. Auxiliary 3/16" dia. x 1/2" shaft w/flat on rear of output shaft.

**SPECIFICATIONS**

- Ratio 50:1
- Power 0.44 HP max.
- Input Speed 1725 RPM max.
- Output Speed 35 RPM max.
- Output Torque 504 in.-lb. max.
- Overhung Load 570 lbs.
- Centerline Distance 2.06"
- Input Shaft 5/8" dia. x 1 1/16" with 3/16" key
- Output Type Right hand shaft
- Output Shaft 1" dia. x 6" with 1/4" key slot
- Mount 5" x 3 3/4"
- Size 5" x 3 1/2" x 6"
- Shpg. 18 lbs.

### 10:1 Gear Reducer

**ITEM 13-1574** **\$69.95**

• New, CLEVELAND GEAR model AKQM70-LH gear reducer. Aluminum housing. Four mounting holes on either side of output bore. CW rotation of input shaft give CW output when viewed from right side of housing.

**SPECIFICATIONS**

- Ratio 10:1
- Power 3.2 HP max.
- Input Speed 1800 RPM max.
- Output Speed 180 RPM max.
- Torque 835 in.-lbs. max.
- Center Line Distance 70mm
- Input Shaft 9" total length,
- 30mm dia. with last 4" 1-15 spline
- Output Bore Accepts 1 1/8" dia. shaft w/1/4" keyway
- Bore thru length 4.75"
- Mount Four M8 tapped holes on 3.937" bolt circle each side of output bore
- Size 7" x 4 3/4" x 7 1/2"
- Shpg. 24 lbs.