

115 VAC Inline Gearmotors

• New, inline gearmotors. Ideal replacement corn pellet stove, auger motor. Originally built for Bixby stoves. Aluminum gear housing.

1.8 RPM

ITEM 5-1771
\$18.95

• Four 8-32 UNC tapped bolt hole face mount on 2 $\frac{3}{8}$ " x 2 $\frac{3}{8}$ " centers.

SPECIFICATIONS

- SPG Co. Model ISG-3220BXA(P/N 2051788)
- Speed 1.8 RPM
- Voltage 115 AC
- Amperage 0.4 Amps
- Torque 110 in - lbs.
- Rotation CW
- Duty intermittent (5 min)
- Enclosure open
- Mount face
- Shaft 1/2" dia. x 1 $\frac{3}{4}$ "
- 1/2-13 UNC RH threaded
- Size 3 $\frac{3}{8}$ " x 2 $\frac{3}{4}$ " x 4 $\frac{3}{4}$ "
- Shpg. 5 lbs.



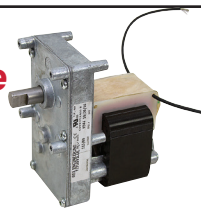
3.8 RPM 115 VAC Inline Gearmotor

ITEM 5-1914
\$14.95

• New, REX ENGINEERING spec # 6544 inline shaded pole gearmotor. Ideal replacement corn pellet stove auger motor. Aluminum gear housing. Four 10-32 UNF tapped bolt hole face mount on 2 $\frac{3}{8}$ " x 2 $\frac{3}{8}$ " centers.

SPECIFICATIONS

- Speed 3.8 RPM
- Voltage 115 AC
- Amperage 0.86 Amps
- Torque 144 in - lbs.
- Gear Ratio 835:1
- Rotation CW
- Duty Continuous
- Enclosure Open
- Mount Face
- Shaft 1/2" diam. x 1" w/flat
- Size 4" x 2 $\frac{3}{4}$ " x 4 $\frac{3}{4}$ "
- Shpg. 6 lbs.



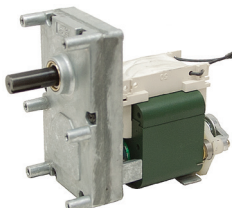
6.5 RPM

ITEM 5-1770
\$18.95

• Four 10-32 UNF tapped bolt hole face mount on 2 $\frac{3}{8}$ " x 2 $\frac{3}{8}$ " centers. Integral brake.

SPECIFICATIONS

- SPG Co. Model ISG-3250BXA(P/N 2051746)
- Speed 6.5 RPM
- Voltage 115 AC
- Amperage 2.65 Amps
- Torque 225 in - lbs.
- Rotation CW
- Duty intermittent (1 min)
- Enclosure open
- Mount face
- Shaft 1/2" dia. x 1 $\frac{1}{4}$ " w/keyway
- Size 5 $\frac{1}{4}$ " x 2 $\frac{3}{4}$ " x 4 $\frac{3}{4}$ "
- Shpg. 7 lbs.



4 RPM 115 VAC Inline Gearmotor

ITEM 5-1915

• New DAYTON model 90K942 inline shaded pole gearmotor. Features steel gears and needle bearing supported output shaft. No thermal overload. Base mount bracket included.

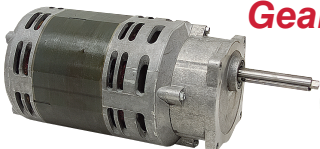
SPECIFICATIONS

- Speed 4 RPM
- Voltage 115 AC
- Amperage 1.4 Amps
- Power 1/40 HP
- Torque 200 in - lbs.
- Gear Ratio 396:1
- Rotation CW
- Duty Continuous
- Enclosure TEFC
- Mount Base or Face
- Shaft 5/8" dia. x 1 $\frac{1}{2}$ " w/ 3/16" keyway
- Size 8 $\frac{3}{8}$ " x 4 $\frac{1}{8}$ " x 5 $\frac{1}{8}$ "
- Shpg. 10 lbs.



\$139.95

743 RPM, 115 VAC Inline Gearmotor



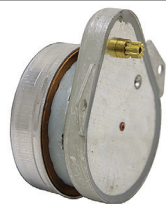
\$29.99

ITEM 5-1647

• Used, BODINE Electric, inline gear motor. Includes run and start capacitors. Requires relay (not included) for start capacitor.

SPECIFICATIONS

- Speed 743 RPM
- Voltage 115 AC
- Amperage 9.9 Amps
- Power 440 watts
- Torque 44 in - lbs.
- Gear ratio 2.42:1
- Rotation CW
- Duty continuous
- Enclosure open
- Mount face 3 $\frac{5}{8}$ " x 3 $\frac{5}{8}$ "
- Shaft 16mm x 3 $\frac{1}{2}$ " w/keyway
- Size 5 $\frac{1}{2}$ " x 10 $\frac{1}{2}$ " x 5 $\frac{1}{2}$ "
- Shpg. 36 lbs.



115 VAC Synchronous Timing Motor

ITEM 10-958-A
\$1.89

• New. For timing, window display and sign animation, experimental purposes, etc.

SPECIFICATIONS

- 120 VAC
- 4.5 watts
- 60 Hz
- Continuous duty
- 50 RPH
- CCW rotation
- Shaft 3/16" dia. 9 T gear
- Mount 2 bolt on 1 $\frac{7}{8}$ " ctrs.
- Size 1 $\frac{7}{8}$ " x 2" x 2 $\frac{1}{2}$ "
- Shpg. 1 lb.

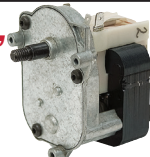
15 RPM, 115 VAC, Gearmotor

ITEM 5-1684
\$9.95

• New, MERKLE-KORFF Model 3715UP-250. Thermally protected, shaded pole motor. Metal gear housing.

SPECIFICATIONS

- Speed 15 RPM
- Voltage 115 AC
- Amperage 2.7 Amps
- Power 97 Watts at idle
- Rotation CW
- Duty intermittent
- Face mt 3 untapped bosses
- Shaft Threaded end 9/16"-18 LH Base end 3/8" dia. x 3/8" long Overall lgth. 1 $\frac{5}{16}$ "
- Size 3 $\frac{3}{8}$ " x 2 $\frac{1}{2}$ " x 4"
- Shpg. 3 lbs.



3.5 RPM 115 VAC Inline Gearmotor

ITEM 5-1883
\$11.95

• New, SPG Co. model ISG-31315FKA (P/N 40384rG). Inline gearmotor. Originally built for timer controls on water softeners. Aluminum gear housing. Four 10-32 UNF tapped bolt hole face mount on 1 $\frac{1}{2}$ " x 1 $\frac{1}{2}$ " centers.

SPECIFICATIONS

- Speed 3.5 RPM
- Voltage 115 AC
- Amperage 1/2 Amp
- Rotation CW
- Duty Intermittent (30 seconds on/30 seconds off)
- Enclosure Open
- Mount Face
- Shafts Front-5/8" dia. x 0.7", Rear-1/4" dia. x 3/4", both have cross holes
- Size 2 $\frac{1}{4}$ " x 3" x 5"
- Shpg. 3 lbs.



2 RPM 120 Volt AC Gearmotor

ITEM 5-1913
\$14.95

• New, SPG Co. model ISG-3225HLA inline gearmotor. Ideal replacement corn pellet stove, auger motor. Originally used on Woodmaster AFS900 wood boiler/furnace. Aluminum gear housing. Six 10-32 UNF tapped bolt hole face mount on 2 $\frac{3}{8}$ " x 2" and 2 $\frac{3}{8}$ " centers.

SPECIFICATIONS

- Speed 2 RPM
- Voltage 115 AC
- Amperage 0.65 Amps
- Rotation CW
- Duty Intermittent(1 min)
- Enclosure Open
- Mount Face
- Shaft 1/2" diam. x 1" w/1/8" keyway
- Size 5" x 2 $\frac{3}{4}$ " x 3 $\frac{3}{8}$ "
- Shpg. 7 lbs.



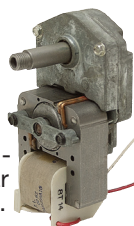
62 RPM, 115 VAC

ITEM 5-1768
\$8.99

• New, Brevel 782 inline gearmotor. T.P.I. Model 8T-115-7AM209A10. Aluminum gear housing. Shaded pole motor. Mounting holes tapped 8-32.

SPECIFICATIONS

- Speed 62 RPM
- Voltage 115 AC
- Amperage 4 Amps
- Rotation CW
- Duty intermittent
- Enclosure open
- Mnt. 4 holes on back face
- Shaft 1/2" dia. x 1 $\frac{1}{2}$ " hollow threaded 7/16"-20 LH
- Size 2 $\frac{1}{2}$ " x 2" x 5 $\frac{3}{4}$ "
- Shpg. 3 lbs.



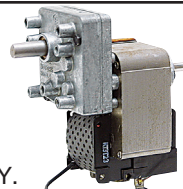
80 RPM, 120 VAC

ITEM 5-1572
\$8.95

• New BREVEL Model Y. Inline parallel shaft gearmotor.

SPECIFICATIONS

- RPM 80
- Voltage 120 VAC
- Amps 2 (no load)
- Rotation CW
- Duty intermittent
- 4 hole face mount 1 $\frac{9}{16}$ " x 1 $\frac{1}{4}$ " ctrs.
- Shaft 3/8" diam. x 3/4" w/ flat
- Size 3 $\frac{1}{8}$ " x 2 $\frac{1}{2}$ " x 4 $\frac{3}{8}$ "
- Shpg. 4 lbs.



100 RPM 115 AC

ITEM 5-1219
\$4.95

• New MERKLE-KORFF.

SPECIFICATIONS

- RPM 100
- Voltage 115
- Amps 1.25
- Torque 4 in. lbs.
- Rotation CCW
- Duty intermittent
- Shaft 3/16" diam. x 1/2" w/crosshole
- Mount front
- Size 2 $\frac{3}{4}$ " x 2 $\frac{1}{2}$ " x 5 $\frac{1}{4}$ "
- Shpg. 3 lbs.



135 RPM, 115 VAC

ITEM 5-1504
\$5.99

• New MOLON LIM-30146-3. Inline gearmotor. 1.25 mFd capacitor included.

SPECIFICATIONS

- RPM 135
- Voltage 115 AC
- Amps 0.1
- HP 1/30
- Torque 58 in-oz
- Rotation reversible
- Duty intermittent
- Shaft 1/4" dia. x 3/8" w/flat
- Mount two bolt face 2 $\frac{1}{16}$ " ctrs.
- Size 1 $\frac{7}{8}$ " x 2 $\frac{3}{8}$ " x 2 $\frac{3}{8}$ "
- Shpg. 1 $\frac{1}{2}$ lbs.

