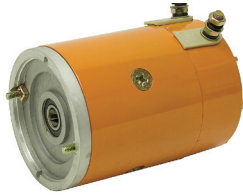


**12 VDC
2550 RPM
Motor**



**ITEM 10-3064
\$136.45**

• Brand new, Buyer's Products model# 1306007 snow plow motor. Replacement motor for many hydraulic power packs.

SPECIFICATIONS

- Voltage 12 VDC
- Amperage 200 Amps, Max.
- Speed 2550 RPM
- Rotation Clockwise
- Enclosure TENV
- Duty Intermittent

- Face Mount Two thru-holes on 3⁹/₁₆" centers for 1/4" O.D. bolts
- Shaft 5/8" O.D. shaft w/ 1/4" wide female tang
- Size 6³/₄" L x 4¹/₂" housing dia.
- **Shpg. 16 lbs.**

**3000 RPM
180 Volt
DC Motor**



**ITEM 10-2688
\$129.95**

• New. LEESON model# CIM34D30ND2B IEC 34-1 D.C. permanent magnet motor.

SPECIFICATIONS

- Power 0.24/0.16 HP (0.18/0.12 kW)
- Voltage 180 VDC
- Amperage 1.2/0.9 Amps
- Speed 3000 RPM
- Rotation Reversible
- Bearings Ball
- Enclosure TENV (IP54)
- Duty Continuous (S1)

- Frame 56D
- Face Mount Four 7mm holes on 100mm B.C., 80mm pilot
- Shaft 9mm dia. x 20mm long w/ 3mm wide x 15mm long keyway
- Size 175mm L x 120mm W x 140mm T
- **Shpg. 11 lbs.**



**1/4 HP 12 VDC
Motor**

**ITEM 10-2893
\$29.95**

• New, permanent magnet motor. Built to drive agricultural spray pumps. 5 mounting bosses on front cover for attaching pump. Could also be used as DC generator. Rubber isolators for holes in mounting base.

SPECIFICATIONS

- Power 1/4 HP
- Voltage 12 DC
- Speed/Amps
- 2600 RPM, 2.2 amps no load
- 2300 RPM, 25 amps, 7 in. lbs. torque
- Rotation reversible

- Bearings ball
- Enclosure TENV
- Duty continuous
- Frame rigid welded base
- Mount 4¹/₈" x 2¹/₂"
- Shaft 5/16" dia. x 1¹/₁₆" w/flat
- Size 4¹/₄" dia. x 4¹/₂"
- **Shpg. 8 lbs.**

**3900 RPM
24 VDC Motor**



**ITEM 10-3291
\$29.95**

• New, 24 VDC 3900 RPM M180726 motor. 10 amp 250 volt inline fuse.

SPECIFICATIONS

- Power 12 Watts
- Voltage 24 DC
- Amperage 0.5 Amps no load
- Speed 3900 RPM
- Rotation Reversible
- Enclosure TENV
- Duty Continuous

- Face Mount Two M5-0.8 tapped holes x 1/2" on 2.3" centers w/ 2.62" OD pilot ring
- Shaft 5/16" dia. x 1³/₈" w/ flat side
- Size 6" x 3" x 3"
- **Shpg. 4 lbs.**

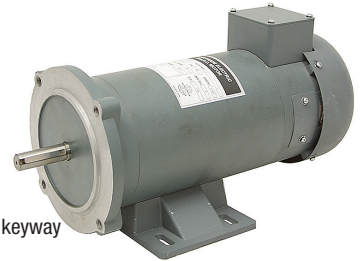
1800 RPM Motors

• Brand new, WORLDWIDE ELECTRIC permanent magnet motors. Bolt on/off steel base. Class F insulation. 20:1 speed range at constant torque.



SPECIFICATIONS FOR ALL

- Voltage 12 DC
- Speed 1800 RPM
- Rotation reversible
- Service factor 1.0
- Bearings ball
- Duty continuous
- Frame 56C
- Mount face & base
- Shaft 5/8" x 1⁷/₈" w/3/16" keyway



12 VDC

ITEM	HP	Amps	Torque	Enclosure	Size	Shpg.	Price
10-2571	1/3	26.4	0.97 lb.ft.	TENV	8.1" x 5.87" x 7.63"	20 lbs.	\$218.85
10-2572	1/2	40	1.46 lb.ft.	TENV	10" x 5.87" x 7.63"	23 lbs.	\$300.85
10-2573	3/4	61.2	2.19 lb.ft.	TEFC	11.4" x 5.87" x 7.63"	30 lbs.	\$303.15
10-2574	1	82.2	2.92 lb.ft.	TEFC	12.2" x 5.87" x 7.63"	35 lbs.	\$337.50

90 VDC

See page 156 for compatible speed controllers.

ITEM	HP	Amps	Torque	Enclosure	Size	Shpg.	Price
10-2575	1/3	3.5	0.97 lb.ft.	TENV	8.1" x 5.87" x 7.63"	21 lbs.	\$190.00
10-2576	1/2	5.2	1.46 lb.ft.	TENV	10" x 5.87" x 7.63"	23 lbs.	\$258.50
10-2577	3/4	7.8	2.19 lb.ft.	TEFC	11.4" x 5.87" x 7.63"	30 lbs.	\$293.70
10-2578	1	10.4	2.92 lb.ft.	TEFC	12.2" x 5.87" x 7.63"	33 lbs.	\$308.90
10-2579	1 1/2	15.4	4.38 lb.ft.	TEFC	14.38" x 5.87" x 7.63"	40 lbs.	\$333.80



**Winch
Motor**

**ITEM 10-1839
\$140.40**

• Brand new. Built as replacement motor for commercial winches. Series wound.

SPECIFICATIONS

- Voltage 12 DC
- Amps 50 no load
- RPM 8000
- Rotation reversible
- Duty intermittent
- Frame 3" pilot ring
- Mount 4 tapped holes 4" BC
- Shaft 3/4" diam. x 1 1/4"
- w/keyway
- Size 4" x 4" x 7 3/4"
- **Shpg. 22 lbs.**

**1050 RPM
12 Volt
DC Motor**

**ITEM 10-3108
\$152.00**

• New, ARROWHEAD model SAB0191 permanent magnet motor. Ideal replacement for salt spreaders or other applications. Heavy duty leads with connectors.

SPECIFICATIONS

- Voltage 12 DC
- Amperage 1.5 Amps (no load)
- Speed 1050 RPM (no load)
- Rotation Reversible



- Enclosure TENV
- Duty Continuous
- Mount 4 tapped holes on face, 4³/₈" x 4³/₈"
- Shaft 3/4" dia. x 3 1/2" w/5/16" crosshole
- Size 6 1/2" x 7" x 5"
- **Shpg. 18 lbs.**

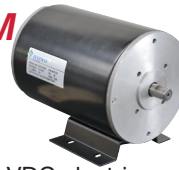
**1/2 HP 1800 RPM
12 VDC Motor**

**ITEM 10-3309
\$59.95**

• New, Hypro-Pentair 12 VDC electric motor model# 2570-0026.

SPECIFICATIONS

- Power 1/2 HP
- Voltage 12 DC
- Amperage 35 Amps
- Speed 1800 RPM
- Rotation Reversible
- Enclosure TENV
- Duty Intermittent
- Base Mount Four 1/4" slotted holes on 3 3/4" x 2" centers
- Face Mount Four 1/4"-20 tapped holes on 1 7/8" centers w/ 2" pilot
- Shaft 5/8" dia. x 7/8" w/ flat 5/8" long
- Size 8 7/8" x 5 1/2" x 6 1/4"
- **Shpg. 26 lbs.**



**1900 RPM
12 Volt
DC Motor**

**ITEM 10-3106
\$119.50**

• New, ARROWHEAD model SAB0121 permanent magnet motor. Ideal replacement for salt spreaders or other applications. External brush access.

SPECIFICATIONS

- Power 1/4 HP
- Voltage 12 DC
- Amperage 2.3 Amps
- Speed 1900 RPM
- Rotation Reversible
- Phase 1 Nm
- Bearings



- Enclosure TENV
- Duty Continuous
- Mount 4 tapped holes on face, 2³/₈" x 2³/₈"
- Shaft 1/2" dia. x 1 3/4" w/flat
- Size 3 1/4" x 8" x 3 1/4"
- **Shpg. 11 lbs.**

**1 HP 2500 RPM
90 Volt DC
Electric Motor**

**ITEM 10-3195
\$99.95**

• New, Turdan Electric model# L15KF.

SPECIFICATIONS

- Power 1 HP
- Voltage 90 Volt DC
- Amperage 11 Amps
- Speed 2500 RPM
- Rotation Reversible
- Service Factor 1
- Bearings Ball
- Enclosure TENV
- Duty Continuous
- Frame 56C
- Face Mount
- Shaft 5/8" dia. x 2" overall length keyed
- Size 11" x 6 1/2" x 6 1/2"
- **Shpg. 31 lbs.**



925 RPM 12 Volt DC Motor

**ITEM 10-3107
\$80.05**

SPECIFICATIONS

- Power 1/6 HP
- Voltage 12 DC
- Amperage 0.75 Amps (no load)
- Speed 925 RPM
- Rotation Reversible
- Enclosure TENV

- Model SAB0189
- Duty Continuous
- Mount 2 studs on face, 2³/₈" c/c
- Shaft 5/16" dia. x 1 3/8" w/ flat
- Size 3" dia. x 4"
- **Shpg. 5 lbs**