

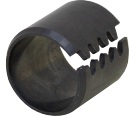


Vogelsang Tension Bushings

• Brand new, Vogelsang Fastener tension bushings used with hydraulic cylinders, grapples, off-road equipment. Installed into slow rotating pivot joints they provide high load capacity and wear resistance. Wavy slot design for consistent alignment during installation. Heat treated 6150 high carbon steel with chamfered ends. Order by Bore, O.D., Length.



1-5593



1-5613



1-5633



1-5674

Outside Bore	Dia.		ITEM	Shpg. lbs.	Price	Outside Bore	Dia.		ITEM	Shpg. lbs.	Price
	1/2"	3/4"					1 1/4"	1 1/2"			
1/2"	3/4"	1/2"	1-5582	0.03	\$6.85	1 1/4"	1 1/4"	1 1/4"	1-5629	0.22	\$5.50
	3/4"	3/4"	1-5583	0.05	\$7.05		1 1/4"	1 1/2"	1-5630	0.27	\$5.45
	3/4"	1"	1-5584	0.07	\$7.25		1 1/4"	2"	1-5631	0.35	\$7.80
3/4"	1"	1/2"	1-5585	0.05	\$2.15	1 1/2"	1 1/4"	2 1/2"	1-5632	0.44	\$9.45
	1"	5/8"	1-5586	0.06	\$2.55		1 3/4"	2 3/4"	1-5633	0.48	\$8.90
	1"	3/4"	1-5587	0.07	\$2.65		1 7/8"	3/4"	1-5634	0.21	\$12.85
	1"	1"	1-5588	0.09	\$3.10		1 7/8"	1"	1-5635	0.27	\$13.60
	1"	1 1/4"	1-5589	0.12	\$3.25		1 7/8"	1 1/4"	1-5636	0.34	\$14.05
	1"	1 1/2"	1-5590	0.14	\$3.60		1 7/8"	1 1/2"	1-5637	0.42	\$14.85
	1"	2"	1-5591	0.18	\$5.85		1 7/8"	2"	1-5638	0.55	\$18.55
1"	1 1/4"	1/2"	1-5592	0.06	\$2.60	2"	2"	1"	1-5639	0.39	\$13.25
	1 1/4"	5/8"	1-5593	0.08	\$3.15		2"	1 1/4"	1-5640	0.48	\$14.50
	1 1/4"	3/4"	1-5594	0.09	\$2.55		2"	1 1/2"	1-5641	0.58	\$15.45
	1 1/4"	7/8"	1-5595	0.11	\$2.65		2"	2"	1-5642	0.77	\$18.40
	1 1/4"	1"	1-5596	0.12	\$2.80		2"	3"	1-5643	1.5	\$24.10
	1 1/4"	1 1/4"	1-5597	0.15	\$3.75		1 3/4"	2"	3/4"	1-5644	0.15
	1 1/4"	1 1/2"	1-5598	0.18	\$4.30	2"		1"	1-5645	0.2	\$8.00
	1 1/4"	2"	1-5599	0.24	\$5.75	2"		1 1/4"	1-5646	0.26	\$7.50
	1 3/8"	3/4"	1-5600	0.14	\$6.10	2"		1 1/2"	1-5647	0.3	\$9.10
	1 3/8"	1"	1-5601	0.19	\$6.40	2"		2"	1-5648	0.4	\$11.00
	1 3/8"	1 1/4"	1-5602	0.24	\$6.80	2 1/4"		1"	1-5649	0.44	\$15.20
	1 3/8"	1 1/2"	1-5603	0.29	\$7.15	2 1/4"		2"	1-5650	0.88	\$25.10
	1 1/8"	1 1/2"	1"	1-5607	0.26	\$16.60	2 1/4"	2 1/2"	1-5651	1.5	\$33.55
1 1/2"		1 1/2"	1-5608	0.4	\$16.40	2 1/4"	1 1/2"	1-5652	0.35	\$13.60	
1 3/8"		3/4"	1-5604	0.11	\$7.00	2 1/4"	2"	1-5653	0.46	\$13.45	
1 3/8"		1"	1-5605	0.14	\$7.35	2 3/8"	3/4"	1-5654	0.26	\$9.75	
1 3/8"		1 1/2"	1-5606	0.2	\$7.85	2 3/8"	1"	1-5655	0.35	\$10.70	
1 1/4"		1 1/2"	1/2"	1-5609	0.07	\$2.70	2 3/8"	1 1/4"	1-5656	0.44	\$12.10
		1 1/2"	3/4"	1-5610	0.11	\$3.10	2 3/8"	1 1/2"	1-5657	0.54	\$13.85
		1 1/2"	1"	1-5611	0.15	\$3.75	2 3/8"	2"	1-5658	0.72	\$19.35
		1 1/2"	1 1/4"	1-5612	0.19	\$3.85	2 3/8"	3"	1-5659	1.5	\$23.55
		1 1/2"	1 1/2"	1-5613	0.22	\$4.30	2 1/2"	1"	1-5660	0.49	\$15.65
	1 1/2"	2"	1-5614	0.29	\$6.40	2 1/2"	1 1/2"	1-5661	0.74	\$18.60	
	1 1/2"	2 1/2"	1-5615	0.37	\$7.75	2 1/2"	2"	1-5662	0.99	\$22.10	
	1 1/2"	3"	1-5616	0.44	\$10.40	2 1/2"	2 1/2"	1-5663	1.5	\$25.35	
	1 5/8"	3/4"	1-5617	0.17	\$9.75	2 1/2"	3"	1-5664	2	\$29.25	
	1 5/8"	1"	1-5618	0.23	\$10.15	2 1/2"	3"	1"	1-5665	0.61	\$20.55
1 5/8"	1 1/4"	1-5619	0.29	\$10.70	3"		1 1/2"	1-5666	0.91	\$23.70	
1 5/8"	1 1/2"	1-5620	0.35	\$10.00	3"		2"	1-5667	1.5	\$27.30	
1 5/8"	2"	1-5621	0.46	\$13.95	3"		2 1/2"	1-5668	2	\$35.10	
1 5/8"	1 1/2"	1-5622	0.25	\$13.25	3"		3"	1-5669	2.5	\$36.10	
1 3/8"	1 5/8"	1 1/4"	1-5623	0.32	\$11.20	3"	3 1/2"	1"	1-5670	0.72	\$19.10
	1 5/8"	1 1/2"	1-5624	0.38	\$11.95		3 1/2"	1 1/2"	1-5671	1.09	\$24.85
	1 5/8"	2"	1-5625	0.5	\$17.40		3 1/2"	2"	1-5672	2	\$26.45
	1 3/4"	1/2"	1-5626	0.09	\$2.95		3 1/2"	2 1/2"	1-5673	2.3	\$36.25
1 1/2"	1 3/4"	3/4"	1-5627	0.13	\$3.75	3 1/2"	3"	1-5674	2.6	\$36.35	
	1 3/4"	1"	1-5628	0.18	\$4.60						

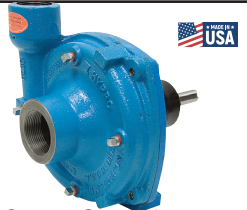
140 GPM Centrifugal Pump

ITEM 2-1222
\$375.85

• Brand new, HYPRO 9203C cast iron centrifugal pedestal mount pump. Ideal for high volume spraying systems. Viton seals.

SPECIFICATIONS

- Model 9203C
- Max. 6000 RPM
- 1 1/2" NPT inlet port
- 1 1/4" NPT outlet port
- Rotation CCW
- Max. temp. 140° F
- 2 bolt pedestal mount on 3" centers
- Shaft 5/8" outside dia. x 2 1/8" long w/ 3/16" keyway
- Size: 7 3/8" x 7 1/4" x 8 1/4"
- Shpg. 21 lbs.



Hypro Roller Pump

ITEM 267-CP
\$204.60

• Brand new HYPRO Cast Iron Roller Pump. High volume and pressure. For live-stock spraying, fertilizer application, weed and pest control. Spray wettable powders and chemicals. CCW (reverse by disassembling and reversing rotor in housing). CAST IRON for general purpose spraying.

SPECIFICATIONS

- 18 GPM, 8 Roller Pump
- Model 7560-C
- 18.3 GPM
- 300 PSI
- 850 RPM
- 4.5 HP max
- Ports 3/4" NPT
- CCW rotation
- Stainless Steel Shaft 1 5/16" dia x 2"
- Ball Bearings
- Replaceable rollers, seals
- 6 3/4" x 6 1/2" x 6 1/2"
- Shpg 18 lbs.



1 3/8" PTO Quick Coupler

ITEM 1321-0007
\$40.55

• Quick change style PTO shaft coupler to couple 1 5/16" diameter shaft to standard 1 3/8" 6T PTO shaft. Shpg 4 lbs.



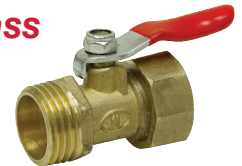
1/2" NPT Brass Ball Valve

ITEM 20-1661
\$1.49

• New brass ball valve. 1/4" orifice. Stainless ball and teflon seal. Compact design. Use for tank drains, etc.

SPECIFICATIONS

- Size 1" dia. x 1 1/2"
- Ports 1/2" NPT male/female
- Shpg 1/2 lb



Brass Ball Valves

• New, CHAMPION-ARROWHEAD lead-free brass ball valves.

Valves meet NSF61-9 regulations and California's AB-1953 regulations. All are full port.

Ball Valves

ITEM	Model Number	Ports	PSI		Length x Width x Height		Shpg.	Price
			(CWP) Max.	without Handle				
20-1652-50	BV12FPT600LF	1/2" NPT FIP	600		2 3/32" x 1 7/32" x 2 3/32"	1/2 lb.	\$4.99	
20-1653-50	BV12SWT600LF	1/2" copper sweat	600		2" x 1 1/4" x 2 3/32"	1/2 lb.	\$3.99	
20-1653-75	BV34SWT600LF	3/4" copper sweat	600		2 3/4" x 1 17/32" x 2 13/32"	1 lb.	\$4.99	
20-1654-100	BV100CMP200LF	1" Copper compression	232		3 27/32" x 1 13/16" x 2 27/32"	1 1/2 lbs.	\$7.99	
20-1656-100	BV100PSH200LF	1" Push-Fit	232		4 1/4" x 1 27/32" x 2 25/32"	1 1/2 lbs.	\$7.99	

