

Water System Automatic Pressure Switches

• Brand new, LEFOO automatic pressure switch for automatic water systems. Automatically turns pump ON or OFF at set values. Adjustable differential. Sturdy plastic housing. Single port.

ITEM 4-1822

\$13.95

SPECIFICATIONS

- Contact ratings
 - 1½ HP at 120 VAC
 - 2 HP at 230 VAC
 - 3 HP at 240 VAC 3Ph
- Factory setting
 - ON (cut-in) 40 PS
 - OFF (cut-out) 60 PS

- Min. ON (cut-in) 20 PSI
- Max. OFF (cut-out) 80 PS
- Differential 15-35 PSI
- Port ¼" NPT
- Size 3¾" x 2⅝" x 3¼"
- Shpg. 1½ lbs.



ITEM 4-1821

\$13.95

SPECIFICATIONS

- Contact ratings
 - 1½ HP, 20 amps at 120 VAC
 - 2 HP, 12 amps at 240 VAC
 - 3 HP, 9.6 amps at 240 VAC 3Ph
- Factory setting
 - ON (cut-in) 30 PS
 - OFF (cut-out) 50 PS

- Min. ON (cut-in) 30 PSI
- Max. OFF (cut-out) 100 PS
- Differential 20-35 PSI
- Port ¼" NPT
- Size 3½" x 2¼" x 3⅝"
- Shpg. 1½ lbs.



12 VDC Marine Camper Pump

ITEM 2-924

\$31.70

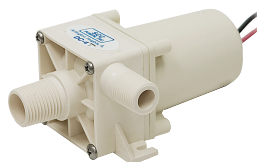


• Brand new. For boats, camper-trailers, etc. as bilge or water system pump. Non-corrosive. Use in any position provided intake is submerged. Fits into tight, out-of-way places.

SPECIFICATIONS

- F12 VDC at 1.8 full load amp
- 339 GPH at 1 ft.
- 95 GPH at 10 ft.

- IN ½" NPT
- OUT ⅝" NPT
- Size 5½" x 2" x 2"
- Shpg. 2 lbs.



115 VAC Coolant Recirculating Pump

ITEM 2-1436

\$27.95



• New, BECKETT Model BJ5A coolant recirculating pedestal pump. Ideal replacement or use with evaporative coolers, displays, laboratories and other water transfer applications. Features include polystyrene column and cap, ABS base plate and a ½" OD PVC adapter. ODP motor with fan and cover.

SPECIFICATIONS

- Voltage 115 VAC
- Amperage 0.9 Amps
- Power 1/70 HP
- Flow Rates
 - 340 GPH at 1 ft. head
 - 255 GPH at 4 ft. head
 - 200 GPH at 6 ft. head
 - 130 GPH at 8 ft. head
 - 40 GPH at 10 ft. head

- Speed 3000 RPM
- Max. head 88 ft. (38 PSI)
- Shut-off at 10.1 ft. head
- Duty continuous
- Power cord 3 foot 18/3
- Inlet base
- Discharge ½" hose barb w/adaptor
- Size 4½" dia. x 9" high
- Shpg. 5 lbs.



Polypropylene Chemical Pump

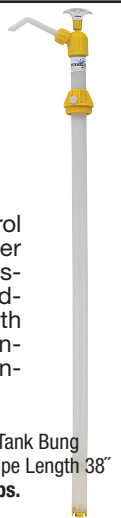
ITEM 2-1451

\$36.95

• New, Funnel King Fluid Control Products by WirthCo plunger style hand pump. Use to transfer antifreeze, detergent, windshield fluid. Polypropylene with steel rod and Viton seals. Includes 2" bung adapter and angled discharge spout.

SPECIFICATIONS

- Flow Rate 1 gal. @ 10 full strokes
- Rotation CW
- Mount 2" Tank Bung
- Suction Pipe Length 38"
- Shpg. 3 lbs.



Nylon Chemical Pump

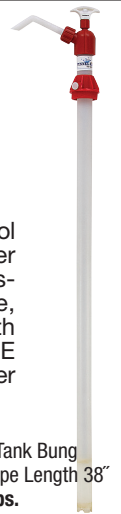
ITEM 2-1452

\$36.95

• New, Funnel King Fluid Control Products by WirthCo plunger style hand pump. Use to transfer DEF, acetone, antifreeze, detergent mild acid. Nylon with stainless steel rod and PTFE seals. Includes 2" bung adapter and angled discharge spout.

SPECIFICATIONS

- Flow Rate 1 gal. @ 10 full strokes
- Rotation CW
- Mount 2" Tank Bung
- Suction Pipe Length 38"
- Shpg. 4 lbs.



Windshield Washer Pump

ITEM 2-1442

\$8.99

• New, windshield washer pump. Mounts thru grommet on side of reservoir (not included). Recessed two prong electrical connection.

SPECIFICATIONS

- Pump Voltage 12 VDC
- Mount 0.65 OD barb for grommet
- Outlet ⅜" hose barb
- Size 1⅝" dia. x 3¾"
- Shpg. 1 lb.



2.5 GPM 500 PSI Hypro Piston Pumps

ITEM 2-1478

\$119.95

• New. HYPRO 53161X-99 piston pump for various spraying, washing, and high pressure applications.

SPECIFICATIONS

- Model 53161X-99
- Flow 2.5 GPM @ 500 PSI
- Pressure 500 PSI max
- RPM 1800 max
- Input Power 1 HP max
- Port ½" NPT
- Shaft ⅝" hollow w/ two set screws
- Rotation Reversible
- Size 6½" x 5½" x 5¼"
- Shpg 11 lbs.



ITEM 2-1479

\$119.95

• New. HYPRO Model 53161-02

Lever Operated Bucket Pump

ITEM 2-1470

\$19.99

• New BEL-RAY model SV00044 lever operated pump. 3 thumbscrews hold top to 5 gallon lubricant pails.

SPECIFICATIONS

- Volume per stroke 2.9 ounces
- Cover Dia. 12"
- Outlet ¼" NPT
- Discharge Tube 48" with ⅜-16 threaded end
- Handle 12"
- Size 12" dia. x 21"
- Shpg. 7 lbs.



14 Ounce Grease Gun

ITEM 2-1469

\$14.99

• New, BEL-RAY 14 ounce grease gun. Will work with either 14 ounce cartridges or can be suction loaded. Output tube can be moved to inline mounting. Plated finish.

SPECIFICATIONS

- Model SV00051
- Volume 1 ounce per stroke
- Max Pressure 4500 PSI
- Size 14" x 8" x 2¼"
- Shpg. 3.5 lbs.



John Deere Barrel Pump

ITEM 2-1457

\$39.99

• New, John Deere hand operated barrel pump. Mounts on top of barrel with 2" bung. All metal construction. Extending pickup tube. Use for hydraulic, engine or gear oils. Not recommended for fuel or antifreeze.

SPECIFICATIONS

- Model TY16049
- Displacement ¾ pint/stroke
- Handle 12"
- Pickup Tube 17" to 34"
- Size 2⅝" dia. x 10"
- Shpg. 6 lbs.



3 Ounce Grease Gun

ITEM 2-1472

\$7.99

• New, BEL-RAY compact 3 ounce grease gun. Will work with either 3 ounce cartridges or can be suction loaded. Includes 5" extension and 9" flex hose. Output tube can be moved to inline mounting. Plated finish.

SPECIFICATIONS

- Model SV00050
- Volume ½ ounce per stroke
- Max Pressure 2900 PSI
- Size 10" x 4½" x 1½"
- Shpg. 2 lbs.

