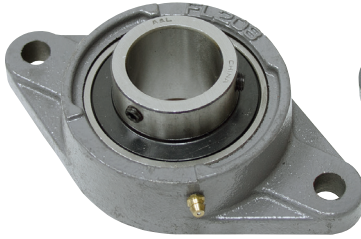


2 Bolt Flange Bearings

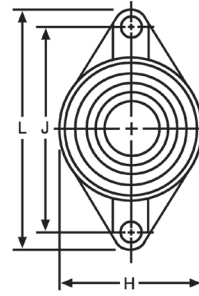
• Brand new 200 series normal duty flange bearings. Cast iron construction with self-aligning ball bearing insert and grease zerk.



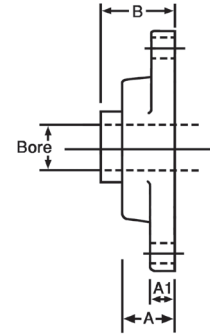
UCFL Series



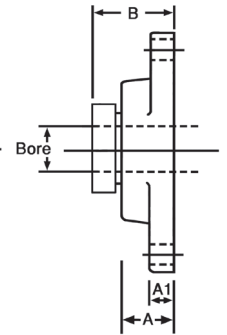
HCFT Series



Front View
Both Series



Side UCFL



Side HCFT

		UCFL Series <i>Two Set Screws, No Lock Collar</i>								HCFT Series <i>Eccentric Locking Collar w/Set Screws</i>									
		<i>Dimensions</i>								<i>Dimensions</i>									
<i>Bore</i>	<i>ITEM</i>	<i>Price</i>	<i>A</i>	<i>A1</i>	<i>B</i>	<i>H</i>	<i>J</i>	<i>L</i>	<i>Bolt</i>	<i>ITEM</i>	<i>Price</i>	<i>A</i>	<i>A1</i>	<i>B</i>	<i>H</i>	<i>J</i>	<i>L</i>	<i>Bolt</i>	<i>Shpg.</i>
1/2"	1-201-08-2	\$10.05	1.004	0.433	1.312	2.362	3.543	4.449	3/8	N/A	-	-	-	-	-	-	-	-	3
5/8"	1-202-10-2	\$10.05	1.004	0.433	1.312	2.362	3.543	4.449	3/8	N/A	-	-	-	-	-	-	-	-	3
3/4"	1-204-12-2	\$ 9.60	1.004	0.433	1.312	2.362	3.543	4.449	3/8	1-204-12-2-C	\$10.70	1.161	0.591	1.791	2.375	3.543	4.429	3/8	3
7/8"	1-205-14-2	\$11.00	1.063	0.512	1.405	2.677	3.898	5.118	7/16	1-205-14-2-C	\$12.15	1.181	0.591	1.807	2.756	3.898	4.843	7/16	3
15/16"	1-205-15-2	\$11.00	1.063	0.512	1.405	2.677	3.898	5.118	7/16	1-205-15-2-C	\$12.15	1.181	0.591	1.807	2.756	3.898	4.843	7/16	3
1"	1-205-16-2	\$11.00	1.063	0.512	1.405	2.677	3.898	5.118	7/16	1-205-16-2-C	\$12.15	1.181	0.591	1.807	2.756	3.898	4.843	7/16	3
1 1/8"	1-206-18-2	\$13.75	1.221	0.512	1.583	3.150	4.606	5.827	7/16	1-206-18-2-C	\$17.00	1.280	0.630	1.972	3.228	4.587	5.591	7/16	4
1 3/16"	1-206-19-2	\$13.75	1.221	0.512	1.583	3.150	4.606	5.827	7/16	1-206-19-2-C	\$17.00	1.280	0.630	1.972	3.228	4.587	5.591	7/16	4
1 1/4"	1-206-20-2	\$13.75	1.221	0.512	1.583	3.150	4.606	5.827	7/16	1-206-20-2-C	\$17.00	1.280	0.630	1.972	3.228	4.587	5.591	7/16	4
1 1/4"	1-207-20-2	\$15.05	1.339	0.551	1.748	3.543	5.118	6.339	1/2	1-207-20-2-C	\$17.85	1.417	0.669	2.098	3.701	5.118	6.221	1/2	5
1 5/16"	1-207-21-2	\$15.05	1.339	0.551	1.748	3.543	5.118	6.339	1/2	1-207-21-2-C	\$17.85	1.417	0.669	2.098	3.701	5.118	6.221	1/2	5
1 3/8"	1-207-22-2	\$15.05	1.339	0.551	1.748	3.543	5.118	6.339	1/2	1-207-22-2-C	\$17.85	1.417	0.669	2.098	3.701	5.118	6.221	1/2	5
1 7/16"	1-207-23-2	\$15.05	1.339	0.551	1.748	3.543	5.118	6.339	1/2	1-207-23-2-C	\$17.85	1.417	0.669	2.098	3.701	5.118	6.221	1/2	5
1 1/2"	1-208-24-2	\$18.05	1.417	0.551	2.016	3.937	5.669	6.890	1/2	1-208-24-2-C	\$21.05	1.535	0.669	2.319	4.055	5.650	6.772	1/2	6
1 5/8"	1-209-26-2	\$22.00	1.496	0.630	2.055	4.252	5.827	7.402	9/16	1-209-26-2-C	\$24.85	1.575	0.709	2.319	4.252	5.847	7.087	9/16	7
1 11/16"	1-209-27-2	\$22.00	1.496	0.630	2.055	4.252	5.827	7.402	9/16	1-209-27-2-C	\$24.85	1.575	0.709	2.319	4.252	5.847	7.087	9/16	7
1 3/4"	1-209-28-2	\$22.00	1.496	0.630	2.055	4.252	5.827	7.402	9/16	1-209-28-2-C	\$24.85	1.575	0.709	2.319	4.252	5.847	7.087	9/16	7
1 7/8"	1-210-30-2	\$27.75	1.575	0.630	2.150	4.528	6.181	7.756	9/16	1-210-30-2-C	\$30.30	1.772	0.787	2.602	4.488	6.181	7.480	9/16	8
1 15/16"	1-210-31-2	\$27.75	1.575	0.630	2.150	4.528	6.181	7.756	9/16	1-210-31-2-C	\$30.30	1.772	0.787	2.602	4.488	6.181	7.480	9/16	8
2"	1-210-32-2	\$27.75	1.575	0.630	2.150	4.528	6.181	7.756	9/16	1-210-32-2-C	\$30.30	1.772	0.787	2.602	4.488	6.181	7.480	9/16	8
2"	1-211-32-2	\$33.15	1.693	0.709	2.299	5.118	7.244	8.819	5/8	1-211-32-2-C	\$37.95	1.890	0.827	2.937	5.039	7.244	8.543	5/8	9
2 1/8"	1-211-34-2	\$33.15	1.693	0.709	2.299	5.118	7.244	8.819	5/8	1-211-34-2-C	\$37.95	1.890	0.827	2.937	5.039	7.244	8.543	5/8	9
2 3/16"	1-211-35-2	\$33.15	1.693	0.709	2.299	5.118	7.244	8.819	5/8	1-211-35-2-C	\$37.95	1.890	0.827	2.937	5.039	7.244	8.543	5/8	9
2 1/4"	1-212-36-2	\$42.55	1.890	0.709	2.704	5.512	7.953	9.843	5/8	1-212-36-2-C	\$47.20	2.087	0.827	3.181	5.433	7.953	9.331	5/8	12
2 3/8"	1-212-38-2	\$42.55	1.890	0.709	2.704	5.512	7.953	9.843	5/8	1-212-38-2-C	\$47.20	2.087	0.827	3.181	5.433	7.953	9.331	5/8	12
2 7/16"	1-212-39-2	\$42.55	1.890	0.709	2.704	5.512	7.953	9.843	5/8	1-212-39-2-C	\$47.20	2.087	0.827	3.181	5.433	7.953	9.331	5/8	12
2 1/2"	1-213-40-2	\$56.05	1.969	0.787	2.744	6.102	8.268	10.158	3/4	N/A	-	-	-	-	-	-	-	-	15
2 3/4"	1-214-44-2	\$61.50	2.126	0.787	2.968	6.299	8.504	10.433	3/4	N/A	-	-	-	-	-	-	-	-	17
2 15/16"	1-215-47-2	\$75.25	2.205	0.787	3.093	6.496	8.858	10.827	3/4	N/A	-	-	-	-	-	-	-	-	18
3"	1-215-48-2	\$75.25	2.205	0.787	3.093	6.496	8.858	10.827	3/4	N/A	-	-	-	-	-	-	-	-	18

Flange Bearings



• Brand new. Two bolt stamped steel housing with sealed self aligning ball bearing. Inner race with 2 set screws.

<i>ITEM</i>	<i>Bore</i>	<i>Centers</i>	<i>Bolts</i>	<i>Uses</i>	<i>Shpg.</i>	<i>Price</i>
1-3031	1/2"	2 1/2"	1/4"	1/2 lb.	1 lb.	\$9.25
1-1869	5/8"	2 1/2"	1/4"	1/2 lb.	1 lb.	\$9.25
1-2386	3/4"	2 13/16"	5/16"	1/2 lb.	1 lb.	\$11.85
1-2387	1"	2.992"	5/16"	1 lb.	1 lb.	\$12.30
1-2388	1 1/4"	3 9/16"	3/8"	1 lb.	1 lb.	\$12.65



1-205-16-T



1-211-32-T

Take-Up Bearings

• Brand new, DURA-ROLL take-up bearings. Cast iron housing. Two set screws on inner race. Bearing has grease zerk. Additional specs on our website.

UCT Series Two Set Screws, No Lock Collar

<i>ITEM</i>	<i>Bore</i>	<i>Housing</i>	<i>Bore thru-lgth.</i>	<i>Shpg.</i>	<i>Price</i>
1-205-16-T	1"	UCT205	1.338"	2 lbs.	\$13.75
1-206-20-T	1.25"	UCT206	1.5"	3 lbs.	\$16.75
1-207-20-T	1.25"	UCT207	1.69"	4 lbs.	\$19.05
1-207-23-T	1 7/16"	UCT207	1.69"	4 lbs.	\$19.05
1-208-24-T	1.5"	UCT208	1.937"	6 lbs.	\$22.75
1-209-28-T	1.75"	UCT209	1.937"	6 lbs.	\$28.05
1-210-31-T	1 15/16"	UCT210	2.03"	6 lbs.	\$30.60
1-211-32-T	2"	UCT211	2.19"	10 lbs.	\$41.10