

Finished Bore Single, Double & Triple Groove Pulleys

- Brand new cast iron pulleys. For use with type "A" and "B" belts. Fully balanced.
- All pulleys furnished with one set screw
- Pulleys have keyed bores in sizes greater than 1/2" (1/2" bore pulleys have no keyway).
- Select an ITEM number for pulley from chart according to outside diameter and add suffix letter according to bore size.

Single Groove Pulleys

Example: ITEM 1-BK24-A is a 2.45" diameter pulley with 1/2" bore.



Double Groove Pulleys

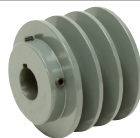
Example: ITEM 1-2BK25-A is a 2.55" diameter pulley with 1/2" bore.



OD	Datum Dia.		Finished Bore Sizes													Shpg.	Price	Finished Bore Sizes													Shpg.	Price
	A Belt	B Belt	ITEM	1/2"	5/8"	3/4"	7/8"	1"	1 1/8"	1 1/4"	1 1/2"	1 3/4"	1 7/8"	2"	ITEM			1/2"	5/8"	3/4"	7/8"	1"	1 1/8"	1 1/4"	1 1/2"	1 3/4"	1 7/8"	2"				
2.45"	1.80"	2.20"	1-BK24	A	B	C	D	-	-	-	-	-	-	-	1 lb.	\$ 7.25	1-2BK25	A	B	C	D	-	-	-	-	-	2 lbs.	\$13.90				
2.55"	1.90"	2.30"	1-BK25	A	B	C	D	-	-	-	-	-	-	-	1 lb.	\$ 8.65	1-2BK27	A	B	C	D	E	-	-	-	-	2 lbs.	\$16.10				
2.65"	2.00"	2.40"	1-BK26	A	B	C	D	-	-	-	-	-	-	-	1 lb.	\$ 9.35	1-2BK28	A	B	C	D	E	F	-	-	-	3 lbs.	\$17.30				
2.75"	2.10"	2.50"	1-BK27	A	B	C	D	-	F	-	-	-	-	-	1 lb.	\$10.05	1-2BK30	A	B	C	D	E	F	-	-	-	4 lbs.	\$17.55				
2.95"	2.20"	2.60"	1-BK28	A	B	C	D	E	F	-	-	-	-	-	2 lbs.	\$10.75	1-2BK32	-	B	-	D	E	F	-	-	-	4 lbs.	\$18.60				
3.15"	2.40"	2.80"	1-BK30	A	B	C	D	E	F	-	-	-	-	-	2 lbs.	\$10.95	1-2BK34	-	B	C	D	E	F	-	-	-	4 lbs.	\$20.60				
3.35"	2.60"	3.00"	1-BK32	A	B	C	D	E	-	-	-	-	-	-	2 lbs.	\$11.70	1-2BK36	-	-	C	D	E	F	-	I	-	5 lbs.	\$21.80				
3.55"	2.80"	3.20"	1-BK34	A	B	C	D	E	F	-	-	-	-	-	2 lbs.	\$13.05	1-2BK40	-	B	C	D	E	F	-	-	-	5 lbs.	\$23.80				
3.75"	3.00"	3.40"	1-BK36	A	B	C	D	E	F	-	-	-	-	-	2 lbs.	\$14.45	1-2BK45	-	-	-	-	E	F	-	I	-	5 lbs.	\$25.95				
3.95"	3.20"	3.60"	1-BK40	A	B	C	D	E	F	-	-	-	-	-	2 lbs.	\$15.95	1-2BK47	-	-	-	D	E	F	-	-	-	5 lbs.	\$26.00				
4.25"	3.50"	3.90"	1-BK45	A	B	C	D	E	F	-	-	-	-	-	3 lbs.	\$17.35	1-2BK50	-	-	C	-	E	F	-	I	-	5 lbs.	\$27.95				
4.45"	3.70"	4.10"	1-BK47	A	B	C	D	E	F	-	-	-	-	-	3 lbs.	\$17.65	1-2BK52	-	-	-	D	E	F	-	I	-	6 lbs.	\$28.15				
4.75"	4.00"	4.40"	1-BK50	A	B	C	D	E	F	-	-	-	-	-	3 lbs.	\$18.25	1-2BK55	-	-	-	-	F	-	I	-	6 lbs.	\$30.10					
4.95"	4.20"	4.60"	1-BK52	A	B	C	D	E	F	-	-	-	-	-	3 lbs.	\$18.60	1-2BK57	-	-	-	-	E	F	-	I	-	6 lbs.	\$30.60				
5.25"	4.50"	4.90"	1-BK55	A	B	C	D	E	F	G	-	-	-	-	4 lbs.	\$19.80	1-2BK60	-	-	C	D	E	F	-	I	-	6 lbs.	\$32.35				
5.45"	4.70"	5.10"	1-BK57	-	B	C	D	E	F	-	-	-	-	-	4 lbs.	\$19.85	1-2BK62	-	-	-	-	E	F	-	I	-	6 lbs.	\$34.35				
5.75"	5.00"	5.40"	1-BK60	A	B	C	D	E	F	G	-	-	-	-	4 lbs.	\$20.20	1-2BK65	-	-	-	-	E	F	-	I	-	6 lbs.	\$36.90				
5.95"	5.20"	5.60"	1-BK62	A	B	C	D	E	F	G	-	-	-	-	4 lbs.	\$21.45	1-2BK67	-	-	-	-	E	F	-	I	-	6 lbs.	\$39.05				
6.25"	5.50"	5.90"	1-BK65	-	B	C	-	E	F	-	-	-	-	-	4 lbs.	\$22.90	1-2BK70	-	-	C	-	E	F	G	I	J	8 lbs.	\$39.55				
6.45"	5.70"	6.10"	1-BK67	-	B	C	-	E	F	-	-	-	-	-	4 lbs.	\$24.20	1-2BK72	-	-	C	-	E	F	-	I	J	5 lbs.	\$25.75				
6.75"	6.00"	6.40"	1-BK70	-	B	C	-	E	F	G	-	-	J	5 lbs.	\$24.50	1-2BK75	-	-	C	-	E	F	-	-	J	5 lbs.	\$28.40					
6.95"	6.20"	6.60"	1-BK72	-	-	C	-	E	F	-	-	I	J	5 lbs.	\$25.75	1-2BK77	-	-	C	-	E	F	-	-	I	J	5 lbs.	\$29.80				
7.25"	6.50"	6.90"	1-BK75	-	-	C	-	E	F	-	-	-	J	5 lbs.	\$28.40	1-BK80	-	B	C	D	E	F	G	H	I	J	6 lbs.	\$31.20				
7.45"	6.70"	7.10"	1-BK77	-	-	C	-	E	F	-	-	I	J	5 lbs.	\$29.80	1-2BK85	-	-	C	-	E	F	G	-	I	J	6 lbs.	\$33.95				
7.75"	7.00"	7.40"	1-BK80	-	B	C	D	E	F	G	H	I	J	6 lbs.	\$31.20	1-2BK90	-	-	C	-	E	F	-	-	I	J	10 lbs.	\$42.00				
8.25"	7.50"	7.90"	1-BK85	-	-	C	-	E	F	G	-	I	J	6 lbs.	\$33.95	1-2BK95	-	-	C	-	E	F	-	-	I	J	7 lbs.	\$37.55				
8.75"	8.00"	8.40"	1-BK90	-	-	C	D	E	F	-	-	I	-	6 lbs.	\$36.00	1-BK100	-	-	C	D	E	F	G	H	I	J	7 lbs.	\$34.00				
9.25"	8.50"	8.90"	1-BK95	-	-	C	-	E	F	-	-	I	J	7 lbs.	\$37.55	1-2BK105	-	-	-	-	E	-	-	-	I	J	7 lbs.	\$36.35				
9.75"	9.00"	9.40"	1-BK100	-	-	C	D	E	F	G	H	I	J	7 lbs.	\$34.00	1-2BK110	-	-	-	-	E	-	G	-	-	-	12 lbs.	\$56.75				
10.25"	9.50"	9.90"	1-BK105	-	-	-	-	E	-	-	-	I	J	7 lbs.	\$36.35	1-2BK115	-	-	-	-	E	-	-	-	I	J	8 lbs.	\$39.60				
10.75"	10.00"	10.40"	1-BK110	-	-	C	-	E	-	G	-	I	J	8 lbs.	\$39.80	1-2BK120	-	-	-	-	E	-	G	-	J	14 lbs.	\$64.90					
11.25"	10.50"	10.90"	1-BK115	-	-	-	-	E	-	-	-	I	J	8 lbs.	\$39.60	1-2BK130	-	-	-	-	E	-	G	-	J	17 lbs.	\$73.00					
11.75"	11.00"	11.40"	1-BK120	-	-	C	-	E	-	G	-	I	J	9 lbs.	\$41.80	1-2BK140	-	-	-	-	E	-	G	-	J	19 lbs.	\$81.20					
12.75"	12.00"	12.40"	1-BK130	-	-	C	-	E	F	G	-	-	J	10 lbs.	\$46.75	1-2BK160	-	-	-	-	E	-	G	-	J	20 lbs.	\$89.70					
13.75"	13.00"	13.40"	1-BK140	-	-	C	-	E	-	G	-	-	J	12 lbs.	\$51.85	1-2BK190	-	-	-	-	E	-	G	-	-	J	25 lbs.	\$102.05				
15.75"	15.00"	15.40"	1-BK160	-	-	-	-	E	F	G	H	-	J	14 lbs.	\$57.30																	
18.75"	18.00"	18.40"	1-BK190	-	-	-	-	E	-	G	H	-	J	16 lbs.	\$62.30																	

Triple Groove Pulleys

Example: ITEM 1-3BK32-A is a 3.35" diameter pulley with 1" bore.



OD	Datum Dia.		Finished Bore Sizes				Shpg.	Price	
	A Belt	B Belt	ITEM	1"	1 1/8"	1 3/8"			1 1/2"
3.35"	2.60"	3.00"	1-3BK32	E	F	-	-	4 lbs.	\$26.80
3.55"	2.80"	3.20"	1-3BK34	E	F	I	L	4 lbs.	\$29.30
3.75"	3.00"	3.40"	1-3BK36	E	F	I	L	5 lbs.	\$33.40
3.95"	3.20"	3.60"	1-3BK40	E	F	I	-	5 lbs.	\$37.00

Std. Keyseat Dimensions

Shaft Diam.	Width	Depth
1/2"	No keyseat	
5/8" - 7/8"	3/16"	3/32"
15/16" - 1 1/4"	1/4"	1/8"
1 5/16" - 1 3/8"	5/16"	5/32"
1 7/16"	3/8"	3/16"