

5200 RPM, DC Voltage Motors

\$3.99 each

- New, GLOBE MOTORS. Permanent magnet design.

SPECIFICATIONS FOR ALL

- Speed 5200 RPM
- Mnt. two 6-32 holes 1" c/c
- Rotation reversible
- Bronze sleeve bearings
- Duty continuous
- Enclosure closed

| ITEM | Model | Voltage | Amps | Shaft | Size |
|---------|----------|---------|-------|------------------|--------------------|
| 10-2482 | 405A100 | 6 DC | 0.2 | 1/8" dia. x 3/8" | 1.27" dia. x 1.85" |
| 10-3214 | 405A6001 | 28 DC | 0.125 | 1/8" dia. x 1/2" | 1.25" dia. x 1.8" |
| 10-2492 | 397A1073 | 24 DC | 0.125 | 1/8" dia. x 1/4" | 1.25" dia. x 2.25" |
| 10-2493 | 405A1192 | 24 DC | 0.125 | 1/8" dia. x 1/2" | 1.25" dia. x 1.85" |

1/2 HP 2500 RPM 180 Volt DC Electric Motor



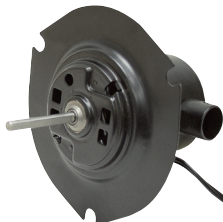
ITEM 10-3194
\$49.95

- New, Turdan Electric model# A1K05J.

SPECIFICATIONS

- Power 1/2 HP
- Voltage 180 Volt DC
- Amperage 2.75 Amps
- Speed 2500 RPM
- Rotation Reversible
- Service Factor 1
- Bearings Ball
- Enclosure TENV
- Duty Continuous
- Frame C71
- Face Mount
- Shaft 5/8" dia. x 2" overall length keyed
- Size 8 3/4" x 6 1/2" x 6 1/2"
- Shpg. 23 lbs.

4000 RPM 12 Volt DC Fan Motor



ITEM 10-2032
\$12.99

- Replacement motor for automotive fan. Model 1632F.

SPECIFICATIONS

- Voltage 12 VDC
- Speed 4000 RPM
- Amperage 2.2 Amps @ no load
- Housing Vented
- Rotation CW
- Shaft 5/16" dia. x 1 1/8" w/ flat
- Mount 3 holes on 6" B.C.
- Overall size 6 1/4" dia. x 4 1/4"
- Shpg. 5 lbs.

12 Volt DC Permanent Magnet Motor



ITEM 10-2548
\$14.99

- New, MAMCO Model CP-12-132 permanent magnet motor. Designed to fit into a 4.3" dia. opening with O-ring groove in edge of front mounting flange. Shaft is partially recessed in flange, extends 5/8" from face.

SPECIFICATIONS

- Voltage 12 DC
- Amperage 2.5 (no load)
- Speed 4400 RPM (no load)
- Torque 45 in.oz. at 3600 RPM 15 amps
- Rotation reversible
- Bearings bronze sleeve
- Enclosure TENV
- Duty continuous
- Shaft 5/16" dia. x 1" w/threaded end
- Size 4.33" dia. x 4 3/4"
- Shpg. 5 lbs.



- Shpg. 1/2 lb.

12 Volt DC 3600 RPM Fan Motor

ITEM 10-1725
\$17.99

- New WILSON 93-38-1019. Permanent magnet.

SPECIFICATIONS

- Voltage 12 DC
- Amps: 1.73, no load
- 90 ohm resistance
- 3600 RPM
- Rotation reversible
- Mount: 6 7/8" B.C.
- Shaft: 5/16" x 1 1/8" w/flat
- Motor Size 3" diam. x 5"
- Size w/mnt.: 7 3/4" dia. x 5"
- Shpg wt: 6 lbs



14000 RPM 6 Volt DC PM Motor

ITEM 10-3102
\$3.99

- New, permanent magnet motor. Shaft has 0.38" dia. 12 tooth gear on it.

SPECIFICATIONS

- Voltage 6 DC
- Amperage 0.3 amps (no load)
- Speed 14000 RPM
- Rotation Reversible
- Enclosure Open
- Duty Intermittant
- Mount Two tapped holes on face
- Shaft 0.09 dia. x 0.425
- Size 1 1/8" dia. x 2"
- Shpg. 1/2 lb.



6000 RPM, 12 VDC

ITEM 10-2631
\$7.99

- New, permanent magnet motor. Built for use in battery powered weed trimmers. Could also be used as small DC generator.

SPECIFICATIONS

- Voltage 12 DC
- Amperage 1 Amp (no load)
- Speed 6000 RPM
- Rotation reversible
- Bearings bronze bushings
- Enclosure TENV
- Duty intermittent
- Mnt. 2 studs rear 2 1/4" c/c
- Shaft 1/2" dia. x 1" w/flat
- Size 3.15" dia. x 1 3/4"
- Shpg. 3 lbs.



3200 RPM, 12 VDC Motor

ITEM 10-2606
\$2.99

- New, DAEWOO permanent magnet motor. Originally for automotive power seat drive. Accepts 3mm square flex drive cable into each end. Packard 12064750 terminal (5/16" push-on spades).

SPECIFICATIONS

- Voltage 12 DC
- Amperage 1.1 Amps
- Speed 3200 RPM
- Rotation reversible
- Enclosure TENV
- Duty intermittent
- Mount 2 screws each end
- Shaft female 3mm socket at each end
- Size 2" dia. x 4 5/8"
- Shpg. 2 lbs.



4850 RPM 12 VDC Fan Motor

ITEM 10-2033
\$8.95

- Unused, old inventory. Permanent magnet motor. Automotive fan motor.

SPECIFICATIONS

- Voltage 12 VDC
- Amperage 2.5 Amps, No Load
- Speed 4850 RPM @ 12V, No Load
- Rotation Reversible
- Enclosure Open
- Duty Continuous, Air-Over
- Mount None
- Shaft 5/16" dia. x 1 1/8" overall length w/ flat
- Size 5 1/4" W x 6 1/2" dia.
- Shpg. 6 lbs



12 VDC Permanent Magnet Motor

ITEM 10-3096
\$3.99

- New, MABUCHI permanent magnet motor. Model RS-545PH-19185. Leads have Molex connector.

SPECIFICATIONS

- Voltage 12 DC
- Amperage 0.2 Amps
- Speed 1450 RPM
- Torque 1.4 oz.in.
- Rotation Reversible
- Duty Intermittent
- Enclosure Open
- Mount 2 M3x0.5 tapped holes 25mm c/c
- Shaft 1/8" dia x 1/2" long (knurled)
- Size 1.45" dia. x 2"
- Shpg. 1/2 lb.



ITEM 10-3099

\$3.99

- Same as 10-3096 above except 1120 RPM Rated 4085 RPM @ 24 and Shaft 1/8" dia x 1/2" long, grooved

24 VDC Permanent Magnet Motor

ITEM 10-3098
\$3.99

- New, permanent magnet motor. "133000313F" stamped into motor housing.

SPECIFICATIONS

- Voltage 24 VDC
- Speed 1925 RPM @ 24
- Rotation Reversible
- Duty Intermittent
- Enclosure Open
- Mount Two tapped holes in face on 1" centers
- Shaft 1/8" dia x 1/2" long, grooved
- Size 2 1/2" x 1 1/2" dia.
- Shpg. 1 lb.



10,000 RPM 6-12 VDC Motor w/Switch

ITEM 10-2784
\$11.95

- New, Johnson model 64680374922 motor. Built for cordless drills. Slide switches for on/off and rotation.

SPECIFICATIONS

- Voltage 6-12 VDC
- Amperage 0.2 Amps @ 12 VDC, No Load
- Speed 10000
- Rotation Reversible
- Enclosure Open
- Duty Intermittent
- Mount 2 tapped holes on face.
- Shaft 1/4" dia. x 5/16" L 11-tooth spline
- Size 2 1/2" x 1 1/2" dia.
- Shpg. 2 lbs.

