



**12 VDC Powerpack Motors**

ITEM 10-2438

Model KMD1 (1787-AC)

**SPECIFICATIONS**

- Voltage 12 DC
- Amperage 270 amps (max.)
- Rotation CW
- Duty Intermittent 8% duty
- (24 seconds on/276 seconds off in 5 minutes)



\$112.85



- at full load.
- Enclosure TENV
- Mount 2 studs, 3/2" c/c
- Shaft 0.48" dia 9 tooth spline
- Size 4 1/2" dia. x 3.94"
- Shpg. 17 lbs.

ITEM 10-2508

Model KMD3 (1789-AC)

\$132.60

Heavy Duty  
• Same as ITEM 10-2438 above except 300 Amps, 13% Intermittent Duty (39 seconds on/ 261 seconds off in 5 min. at full load), Size 4.5" dia. x 7.52". Shpg. 18 lbs.

**185 RPM 24 Volt DC Gearmotor**

ITEM 5-1921

\$18.95

• New, AMETEK PITTMAN model# GM9234E992-R1 parallel-shaft gearmotor. Operates at 1/2 speed on 12 volt DC power.

**SPECIFICATIONS**

- Shaft Speed 185 RPM
- Voltage 24 VDC
- Amperage 0.15 Amps @ No Load
- Torque 41 oz/in peak
- Gear Ratio 5.9:1
- Rotation Reversible
- Duty Intermittent
- Enclosure TENV



- Face Mount Two 10-32 tapped holes on 1 1/2" centers
- Rear Mount Four 6-32 tapped holes on 1 1/16" square centers
- Shaft 3/16" dia. x 5/8" w/ cross pin hole
- Size 3 13/16" x 2" dia.
- Shpg. 2 lbs.

**24 RPM, 12 VDC Inline Gearmotor**

ITEM 5-1834

\$527.90

• Brand new, LEESON Model M1125-254.00 offset permanent magnet gearmotor. Grease filled gearcase with steel gears. Externally accessible brushes. Ball Bearings.

**SPECIFICATIONS**

- Speed 24 RPM
- Voltage 12 DC
- Amperage 10.6 Amps
- Power 1/8 HP
- Torque 280 in.lbs.
- Gear ratio 76:1
- Overhung load capacity 353 lbs.



- Rotation reversible
- Duty continuous
- Enclosure TENV
- Mount four 5/16-18 tapped holes on face (3.375" sq.)
- Shaft 5/8" dia. x 1 1/16" w/3/16" keyway
- Size 9" x 3 3/4" x 6 1/8"
- Shpg. 12 lbs.

**42 RPM, 12 VDC Gearmotor**

ITEM 5-1683

\$13.95

• New, Molon Model CHM-1245-1. Slotted output from gearbox. Includes 1" dia. x 8 5/8" long 5 section rubber drive roller for output.

**SPECIFICATIONS**

- Speed 42 RPM
- Voltage 12 DC
- Amperage 0.85 Amps
- Torque 8 in. lbs.
- Rotation reversible

- Duty continuous
- Mount 4 holes 2 1/2" x 2 3/8"
- Shaft 5/16" female w/3/16" slot
- Size 2 3/4" x 2 3/4" x 3"
- Shpg. 2 lbs.



**40 RPM, 12 VDC Right-Angle Gearmotors**

ITEM 5-1719

Model RA-30AN-35

**SPECIFICATIONS**

- P/N 5541095
- Speed 40 RPM
- Voltage 12 DC
- Amperage 33-50 Amps
- Power .53 HP
- Torque 836 in-lbs.
- Gear ratio 90:1

ITEM 5-1720

Model RA-30AN-35

**SPECIFICATIONS**

- P/N 5541895
- Speed 40 RPM
- Voltage 12 DC
- Amperage 33-75 Amps
- Power 1.2 HP
- Torque 1890 in-lbs.
- Gear ratio 90:1

**100 RPM, 12 VDC Gearmotor**

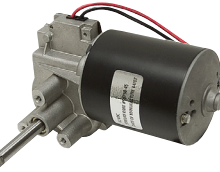
ITEM 5-1649

\$78.05

• Brand new, STATURE ELECTRIC Model RA-AFSL-30AN-35 right-angle gearmotor. Ball bearings and bronze bushings, steel worm gear, brass output gear and die cast aluminum gearbox. Two pole, permanent magnet motor with internal brushes. Three mounting holes tapped for M6 machine screws. Rated to withstand 300 in-lbs. max back-drive torque.

**SPECIFICATIONS**

- Speed 100 RPM
- Voltage 12 DC
- Amperage 3.0 no load, 6.0 cont., 62 peak
- HP 1/30 cont.
- Torque 20 in-lbs. cont.
- Gear ratio 35:1



- Rotation reversible
- Duty intermittent
- Fully enclosed, IP54
- Face mount, tapped holes
- Shaft 7/16" dia. x 2 7/16" w/flat
- Size 7 3/8" x 3 1/8" x 4 3/8"
- Shpg. 7 lbs.

**25 RPM, 24 VDC Gearmotor**

ITEM 5-1796

\$11.95

• New, SEI Model 37JB270G/32ZYT30-2468 compact inline gearmotor. Operates on 12-24 VDC.

**SPECIFICATIONS**

- Speed 25 RPM (no load)
- Voltage 24 DC
- Amperage 60 mA (no load)
- Torque 8 in. lbs.
- Gear ratio 270:1



- Rotation reversible
- Duty continuous
- Mount four M3 holes face
- Shaft 6mm x 0.6" w/flat
- Size 1.45" dia. x 2.2"
- Shpg. 1/2 lb.

**61 RPM, 12 VDC Gearmotor**

ITEM 5-1802

\$574.05

• Brand new, LEESON Model M1125220. Inline permanent magnet gearmotor. Aluminum housing with permanent grease and steel gears. Externally accessible brushes. Ball bearings.

**SPECIFICATIONS**

- Speed 61 RPM
- Voltage 12 DC
- Amperage 10.4
- Power 1/8 HP
- Torque 113 in.lbs.
- Gear ratio 29:1
- Rotation reversible



- Duty continuous
- Enclosure TENV
- Mount 4 holes on face (3.375" sq.) and foot
- Shaft 5/8" dia. x 1 1/2" w/3/16" keyway
- Size 8.57" x 4" x 5 1/8"
- Shpg. 14 lbs

ITEM 5-1835

\$600.35

• Same as ITEM 5-1802 above except 51 RPM, torque 130 in. lbs., gear ratio 35:1. Size 9 3/4" x 4" x 5 1/8".

**9 RPM, 90 VDC Inline Gearmotor**

ITEM 5-1804

\$595.00

• New, LEESON M115025 inline gearmotor. Use with speed controller (not included) to have variable speed with 115 VAC input.

**SPECIFICATIONS**

- Speed 9 RPM
- Voltage 90 VDC
- Amperage 0.5 Amps
- Power 1/20 HP
- Torque 268 in.lbs.
- Gear ratio 216:1
- Overhung load 474 lbs.
- Rotation reversible



- Duty continuous
- Enclosure TEFC
- Face mount 4 bolt, 3.375" square
- Base mount
- Shaft 5/8" dia. x 1", 3/16" keyway
- Size 4.06" x 8.57" x 5.13"
- Shpg. 12 lbs

**5 RPM, 24 VDC Inline Gearmotor**

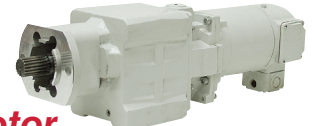
ITEM 5-1840

\$129.95

• New take-off, SolFocus P/N 350-000062-000 permanent magnet inline gearmotor. Rated for 24 volts but will operate on 12 volts at reduced speed and output.

**SPECIFICATIONS**

- Speed 5 RPM
- Voltage 24 VDC
- Amperage 4.2 Amps
- Power 1/10 HP
- Torque 109 Nm (964.8 in.lbs.)
- Gear Ratio 266.3:1
- Rotation Reversible



- Duty Continuous
- Enclosure TENV
- Face Mount 2 bolt, 106mm (4.173") bolt circle
- Mount Pilot 68mm (2.677")
- Shaft 25mm (0.984") dia. x 1 1/2" long 18T spline DIN 5480
- Size 18 5/8" x 5 3/16" x 6 1/4"
- Shpg. 40 lbs.

**140 RPM, 12 VDC Gearmotor**

ITEM 5-1765

\$9.95

• New, compact inline permanent magnet gearmotor.

**SPECIFICATIONS**

- Speed 140 RPM
- Voltage 12 DC
- Amperage 0.13 Amps (no load)
- Rotation reversible
- Duty intermittent



- Mount 3 M3 tapped holes on face
- Shaft 5mm dia. x 10mm w/flat
- Size 1 1/4" dia. x 2 1/16"
- Shpg. 1/2 lb.