



### Inline Flow Control Valve

• Brand new, WOLVERINE by PRINCE inline flow control valves. Designed to provide flow control and shut-off in one flow direction while providing free flow in the opposite direction. Color bands for easy flow adjustments and fast return to previous setting. Set screw to lock valve to any setting. Carbon steel body.



### Inline Needle Valves



• Brand new, WOLVERINE by PRINCE inline needle valves. Designed to provide flow control in both directions. Carbon steel body.

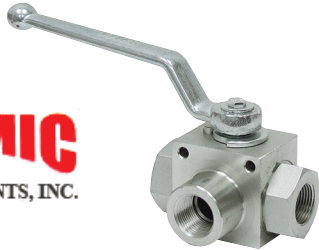


ITEM	Model	Ports	PSI	GPM	Shpg.	Price
9-7960-4	WFC-400	1/4" NPT	5000	0-5	1 lb.	\$ 29.70
9-7960-6	WFC-600	3/8" NPT	5000	0-8	2 lbs.	\$ 31.75
9-7960-8	WFC-800	1/2" NPT	5000	0-15	3 lbs.	\$ 39.15
9-7960-12	WFC-1200	3/4" NPT	3000	0-25	4 lbs.	\$ 76.30
9-7960-16	WFC-1600	1" NPT	3000	0-40	7 lbs.	\$184.95

ITEM	Model	Ports	PSI	GPM	Shpg.	Price
9-7961-4	WNV-400	1/4" NPT	5000	0-5	1 lb.	\$ 25.00
9-7961-6	WNV-600	3/8" NPT	5000	0-8	2 lbs.	\$ 33.75
9-7961-8	WNV-800	1/2" NPT	5000	0-15	3 lbs.	\$ 42.55
9-7961-12	WNV-1200	3/4" NPT	3000	0-25	4 lbs.	\$ 75.60
9-7961-16	WNV-1600	1" NPT	3000	0-40	7 lbs.	\$183.60

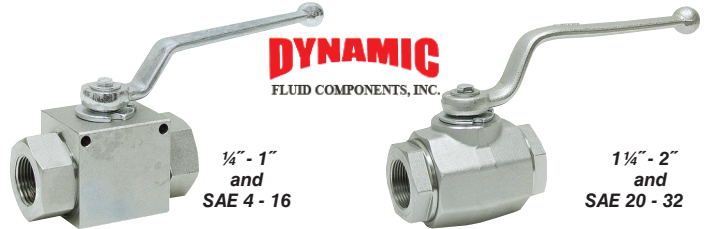
### 3 Way High Pressure Ball Valves

• Brand new, DYNAMIC DE Series 3-way diverter ball valve. Suitable for hydraulic and water applications. Constructed of high-carbon steel with zinc-chromate plating. Standard POM ball seals with Buna stem seals.



### High Pressure Ball Valves

• Brand new, DYNAMIC Fluid Components DE2 Series ball valves. Suitable for hydraulic and water applications. Constructed of high-carbon steel with zinc-chromate plating. Standard POM ball seals with Buna stem seals. Temperature range -30 to 212° F.



	ITEM	PSI	Ports	Shpg.	Price
<b>NPT</b>	9-8595-4	5880	1/4" NPT	1 1/2 lbs.	\$ 32.10
	9-8595-6	5880	3/8" NPT	2 lbs.	\$ 40.15
	9-8595-8	5145	1/2" NPT	3 lbs.	\$ 51.15
	9-8595-12	5145	3/4" NPT	5 lbs.	\$ 66.20
	9-8595-16	5145	1" NPT	7 lbs.	\$ 84.25
	9-8595-20	4500	1 1/4" NPT	7 lbs.	\$126.40
	9-8595-24	4500	1 1/2" NPT	12 lbs.	\$170.55
	9-8595-32	4500	2" NPT	15 lbs.	\$220.70
	<b>SAE</b>	9-8596-4	5880	SAE 4	1 1/2 lbs.
9-8596-6		5880	SAE 6	2 lbs.	\$ 40.15
9-8596-8		5145	SAE 8	3 lbs.	\$ 51.15
9-8596-12		5145	SAE 12	5 lbs.	\$ 66.20
9-8596-16		5145	SAE 16	7 lbs.	\$ 84.25
9-8596-20		4500	SAE 20	7 lbs.	\$ 90.30
9-8596-24		4500	SAE 24	12 lbs.	\$160.50
9-8596-32		4500	SAE 32	15 lbs.	\$230.75

	ITEM	PSI	Ports	Shpg.	Price
<b>NPT</b>	9-7281-4	7250	1/4" NPT	1 1/2 lbs.	\$22.05
	9-7281-6	7250	3/8" NPT	2 lbs.	\$23.30
	9-7281-8	7250	1/2" NPT	3 lbs.	\$25.85
	9-7281-12	5800	3/4" NPT	5 lbs.	\$50.10
	9-7281-16	5000	1" NPT	7 lbs.	\$58.40
	9-7281-20	5000	1 1/4" NPT	8 lbs.	\$68.20
	9-7281-24	5000	1 1/2" NPT	10 lbs.	\$84.25
	9-7281-32	5000	2" NPT	13 lbs.	\$124.40
	<b>SAE</b>	9-7282-4	7250	SAE 4	1 1/2 lbs.
9-7282-6		7250	SAE 6	2 lbs.	\$27.15
9-7282-8		7250	SAE 8	3 lbs.	\$30.30
9-7282-12		5800	SAE 12	5 lbs.	\$58.75
9-7282-16		5000	SAE 16	7 lbs.	\$71.50
9-7282-20		5000	SAE 20	8 lbs.	\$80.25
9-7282-24		5000	SAE 24	12 lbs.	\$90.30
9-7282-32		5000	SAE 32	15 lbs.	\$124.40

### Sequence Valve

**Prince** **ITEM 9-4708**  
**\$172.50**

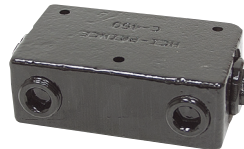


• Brand new PRINCE Model RD1075SH. Use to have cylinders operate in sequence. Adjustable pilot pressure. Allows oil to be directed toward sequence port. Check valve allows flow from sequence to inlet port so cylinder can retract. Drain port must be connected to tank.

- SPECIFICATIONS**
- Inlet/Sequence Ports 3/4" NPT
  - Drain port 3/8" NPT
  - Adj pilot pressure 1400-2500 PSI
  - Size 6 1/2" x 1 3/4" x 4"
  - Shpg. 8 lbs.

### Double Pilot Operated Check Valves

**Prince** **\$150.55 each**



• Brand new PRINCE. Double pilot operated lock valve designed to lock a cylinder in place when control valve is in the neutral position. Double internal pilot checks.

**SPECIFICATIONS**

- PSI 3000
- Size 5" x 2" x 1 3/4"
- Shpg. 9 lbs.

ITEM	Model	Ports	GPM
9-5606-50	RD1450	1/2" NPT	25
9-5606-75	RD1475	3/4" NPT	30

### Planter Marker Valve

**CROSS** **ITEM 9-4414**  
**\$121.05**



• Brand new CROSS. Sequence valve designed to alternately operate a pair of agricultural guide marker cylinders on a planter row marker system. Valve plumbs into the lift cylinder circuit on the planter. Can be used on single or double acting marker cylinders. 2 GPM, rated 2500 PSI, three ports SAE 8. Shpg. 6 lbs.