

**Hydraulic Solenoid Valves**

- Brand new EATON VICKERS DG4V-3 Series. Dual solenoid directional valves for operating hydraulic cylinders, motors and other actuators. Spring centering spool action. Manual over-ride on solenoids. Valves ship with four cap-screws for mounting. Requires D03 subplate sold separately on this page. Use with two Hirschmann connectors (not incl.) for wiring.

SPECIFICATIONS

- GPM 10½
- PSI 3000
- Ports D03 subplate mtg.
- Shpg. 6 lbs.



	ITEM	Price	Valve Type	Spool Details
12 VDC Amperage 3.5 Size 8¾" x 17½" x 2½"	9-6136	\$192.70	Open center	Work ports blocked in neutral
	9-6138	\$168.00	Closed center	All ports blocked in neutral
	9-6137	\$178.55	Open center	All ports open to tank in neutral
120 VAC Amperage 0.35 Size 7¾" x 17½" x 2½"	9-7235	\$231.10	Open center	Work ports blocked in neutral
	9-7237	\$244.40	Closed center	All ports blocked in neutral
	9-7236	\$229.60	Open center	All ports open to tank in neutral

Solenoid Coil Wire Connector**ITEM 11-2457** **\$5.00**

- Brand new HIRSCHMAN style connector for installation of wires to solenoid coil. Two connectors required for each solenoid valve. Shpg. 1/10 lb.

**D03 Subplates**

- Brand new D03 aluminum subplates for solenoid operated valves.
- Parallel circuit for closed center valves.
- Series circuit for open center valves.



Parallel



Series

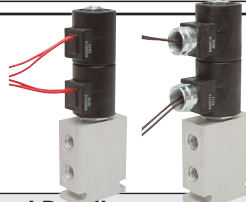
Valves	Parallel ITEM	Price	Series ITEM	Price	Ports	Shpg.
1	9-4070-1	\$ 43.50	9-5883-1	\$ 44.50	SAE 6	2 lbs.
2	9-4070-2	\$ 90.00	9-5883-2	\$115.75	IN SAE 10, OUT SAE 12, Work SAE 8	6 lbs.
3	9-4070-3	\$138.00	9-5883-3	\$153.25	IN SAE 10, OUT SAE 12, Work SAE 8	7 lbs.
4	9-4070-4	\$183.00	9-5883-4	\$196.75	IN SAE 10, OUT SAE 12, Work SAE 8	9 lbs.

Directional Control Valves

- Brand new HYDRAFORCE dual solenoid directional control valves.

SPECIFICATIONS

- Pressure 3500 PSI
- Mount 2 hole side 2" c/c
- Spools one
- In/Out ports SAE 6
- Size 2½" x 1¾" x 7¾"
- Flow 5 GPM
- Work ports SAE 6
- Shpg. 5 lbs.



Voltage	ITEM	Price	Valve Type	Spool Details
12 VDC Amperage 1.67	9-7987	\$142.95	Open center	Work ports blocked in neutral
	9-7989	\$142.95	Closed center	All ports blocked in neutral
	9-7988	\$142.95	Open center	All ports open to tank in neutral
115 VAC Amperage 0.18	9-7990	\$178.95	Open center	Work ports blocked in neutral
	9-7992	\$178.95	Closed center	All ports blocked in neutral
	9-7991	\$179.95	Open center	All ports open to tank in neutral

1" NPT Hydraulic Relief Valve**ITEM 9-7901**
\$91.25

- Brand new, BUYERS PRODUCTS model HRV10025 inline (3 port) relief valve. Ball and spring direct acting style. Cast iron body. Three mounting holes for 3/8" bolts.

SPECIFICATIONS

- Ports 1" NPT
- Flow Rating 50 GPM max
- Relief Range 1501-3000 PSI
- Factory Setting 2000 PSI
- Gauge Port ¼" NPT
- Size 9¾" x 3½" x 3¼"
- Shpg. 10 lbs.

**SAE 12 30 GPM Hyd Motor Relief Bypass Valve** **ITEM 9-8745**
\$206.50

- Brand new, FLUIDTECH four port inline crossover relief and bypass check valve. Provides overload and shut off protection for motor wind down when used with hydraulic control valves that have blocked work ports in neutral. For non reversible applications only. Ideal for use with skid steer loader or tractor valve outlets for operating remote hydraulic motor for overload and shut off protection. Two mounting holes for 3/8" bolts.

SPECIFICATIONS

- Flow Rating 30 GPM max
- Pressure Rating 3000 PSI max
- Relief Range 450-3000 PSI
- Factory Setting 2500 PSI
- Ports SAE 12
- Size 2½" x 3¾" x 8½"
- Shpg. 7 lbs.

**Electric Flow Control** 

- Brand new BRAND HYDRAULICS. Variable flow control valve with 12 volt DC controller for remote operation. Gives convenient hydraulic motor speed control from tractor cabs.

SPECIFICATIONS

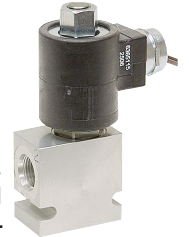
- Control Voltage 12 VDC
- Flow Range 0-15 GPM
- Pressure 3000 PSI max.
- Ports SAE 12
- Size 9½" x 5" x 17½"
- Shpg. 12 lbs.

ITEM 9-5178-15 **\$650.95**

- Flow range 0 - 15 GPM.

ITEM 9-5178-30 **\$650.95**

- Flow range 0 - 30 GPM.

12 VDC & 115 VAC Solenoid Operated Poppet Valves 

- Brand new HYDRAFORCE. Solenoid operated 2 way poppet type valves. Use for starting, stopping, or dumping of hydraulic circuits to 3000 PSI (not a directional control valve). Available in N.O. or N.C. configurations with 12 volt DC or 115 volt AC coils. Continuous rated solenoids with hardened seats for long life and low leakage. Rated 12-15 GPM, ports SAE 8. Shpg. 2 lbs.

Voltage	ITEM	Valve Type	Price
12 VDC Amps 1.67	9-5112-NO	Normally Open	\$89.95
	9-5112-NC	Normally Closed	\$81.95
115 VAC Amps 0.18	9-5111-NO	Normally Open	\$108.50
	9-5111-NC	Normally Closed	\$98.95

Flow Control w/ Shutoff Valve

- Brand new, BUYERS dual flow control valve with shutoff for snow spreader equipment, fertilizer applicators and other motor speed control applications. Two pressure compensated flow controls for speed control of auger and spinner motors, relief valve and ON/OFF lever valve.

SPECIFICATIONS

- Flow Inlet 40 GPM max.
- Pressure 2000 PSI max.
- Relief Valve 1500 PSI
- Ports In/Tank/Auger ¾" NPT
- Port Spinner ½" NPT
- Size 7¾" x 5¼" x 4"
- Shpg. 9 lbs.

ITEM 9-8914-7 **\$253.25**

- Flow Rate Spinner 0-7 GPM
- Flow Rate Auger 0-15 GPM

ITEM 9-8914-10 **\$242.40**

- Flow Rate Spinner 0-10 GPM
- Flow Rate Auger 0-30 GPM