

CRSV10 and CRSV20 Series Pumps

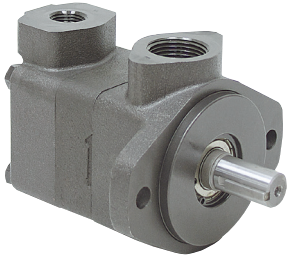


• Brand new, CRS hydraulic balanced vane pumps. Cast iron construction. Ports inline with one another. Operating rotation can be field reversed. Outlet port can be field rotated any position.

SPECIFICATIONS For All CRSV Series

- Min. 600 RPM
- Input rotation CW
- Mount SAE A 2 bolt

CRSV10 Series

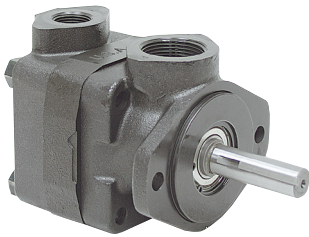


SPECIFICATIONS For CRSV10 Series

- Inlet port 1" NPT
- Outlet port 1/2" NPT
- Shaft 3/4" dia. x 1 1/4" w/ 3/16" key
- Shpg. 15 lbs.

| at Max. RPM & PSI | | | | | | | | |
|-------------------|-------------------|--------|----------|------|------|------|---------------------------|----------|
| ITEM | Model | Displ. | Max. RPM | PSI | GPM | HP | Size | Price |
| 9-8532-1 | CRS V10-1P1P-1C20 | 0.20 | 4800 | 2500 | 3.6 | 7 | 4 7/8" x 5 1/4" x 4 1/4" | \$230.40 |
| 9-8532-2 | CRS V10-1P2P-1C20 | 0.40 | 4500 | 2500 | 7.3 | 13.6 | 4 7/8" x 5 1/4" x 4 1/4" | \$230.40 |
| 9-8532-3 | CRS V10-1P3P-1C20 | 0.60 | 4000 | 2500 | 9.4 | 17.8 | 4 7/8" x 5 1/4" x 4 1/4" | \$230.40 |
| 9-8532-4 | CRS V10-1P4P-1C20 | 0.80 | 3400 | 2500 | 10.9 | 20.4 | 5 1/16" x 5 1/4" x 4 1/4" | \$230.40 |
| 9-8532-5 | CRS V10-1P5P-1C20 | 1.0 | 3200 | 2500 | 12.8 | 22.8 | 5 1/16" x 5 1/4" x 4 1/4" | \$230.40 |
| 9-8532-6 | CRS V10-1P6P-1C20 | 1.19 | 3000 | 2200 | 14.6 | 24.5 | 5 1/4" x 5 1/4" x 4 1/4" | \$230.40 |
| 9-8532-7 | CRS V10-1P7P-1C20 | 1.39 | 2800 | 2000 | 16 | 17.9 | 5 1/4" x 5 1/4" x 4 1/4" | \$230.40 |

CRSV20 Series



SPECIFICATIONS For CRSV20 Series

- Inlet port 1 1/4" NPT
- Outlet port 3/4" NPT
- Shaft 3/4" dia. x 2.655" w/ 3/16" key
- Shpg. 19 lbs.

| at Max. RPM & PSI | | | | | | | | |
|-------------------|--------------------|--------|----------|------|------|------|-----------------------------|----------|
| ITEM | Model | Displ. | Max. RPM | PSI | GPM | HP | Size | Price |
| 9-8533-5 | CRS V20-1P5P-1C11 | 1.0 | 3400 | 2500 | 13.5 | 24.5 | 5 3/16" x 5 1/4" x 5 1/16" | \$269.60 |
| 9-8533-6 | CRS V20-1P6P-1C11 | 1.19 | 3400 | 2500 | 16.1 | 29 | 5 3/16" x 5 1/4" x 5 1/16" | \$269.60 |
| 9-8533-7 | CRS V20-1P7P-1C11 | 1.39 | 3000 | 2500 | 16.7 | 29.5 | 5 7/16" x 5 1/4" x 5 1/16" | \$269.60 |
| 9-8533-8 | CRS V20-1P8P-1C11 | 1.62 | 2800 | 2500 | 17.7 | 32.5 | 5 7/16" x 5 1/4" x 5 1/16" | \$269.60 |
| 9-8533-9 | CRS V20-1P9P-1C11 | 1.81 | 2800 | 2500 | 19.8 | 35.5 | 5 7/16" x 5 1/4" x 5 1/16" | \$269.60 |
| 9-8533-10 | CRS V20-1P10P-1C11 | 2.00 | 2500 | 2500 | 20.6 | 33.8 | 5 11/16" x 5 1/4" x 5 1/16" | \$269.60 |
| 9-8533-11 | CRS V20-1P11P-1C11 | 2.22 | 2500 | 2500 | 22.9 | 37.5 | 5 11/16" x 5 1/4" x 5 1/16" | \$269.60 |
| 9-8533-12 | CRS V20-1P12P-1C11 | 2.38 | 2400 | 2200 | 23 | 36 | 5 11/16" x 5 1/4" x 5 1/16" | \$269.60 |
| 9-8533-13 | CRS V20-1P13P-1C11 | 2.59 | 2400 | 2200 | 25.9 | 39 | 5 11/16" x 5 1/4" x 5 1/16" | \$269.60 |

TB and TC Series Pumps

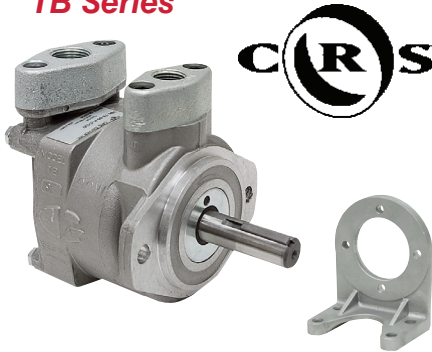


• Brand new. Designed specifically for heavy duty industrial, agricultural and contractor applications. "No load" starting. Vanes are retracted until centrifugal force automatically extends them. Until they become extended no load is exerted on the engine. Ball bearings give maximum shaft support with minimum friction. Pump can be belt and pulley driven.

SPECIFICATIONS for All TB and TC Series

- Max. 1500 PSI
- Min. 300 RPM
- Req'd starting 500 RPM

TB Series



SPECIFICATIONS For TB Series

- Max. RPM 1800
- Shaft 3/4" dia. x 2 1/2" w/ 3/16" keyway
- Two bolt A mount
- Size 7 3/4" x 5 1/4" x 5 1/4"
- Shpg. 13 lbs.

| CW Rotation | | CCW Rotation | | at 1500 PSI | | | Ports | | Price |
|-------------|------------|--------------|--------|-------------|-------|----------|----------|----------|-------|
| ITEM | ITEM | Model | Displ. | GPM | HP | IN | OUT | | |
| 9-1214-CW | 9-1214-CCW | TB-3 | 0.374 | 3.80 | 6.45 | 3/4" NPT | 1/2" NPT | \$515.30 | |
| 9-1215-CW | 9-1215-CCW | TB-6 | 1.06 | 9.06 | 11 | 3/4" NPT | 1/2" NPT | \$515.30 | |
| 9-1216-CW | 9-1216-CCW | TB-9 | 1.72 | 14.35 | 15.81 | 1" NPT | 3/4" NPT | \$515.30 | |
| 932-CW | 932-CCW | TB-12 | 2.05 | 17.10 | 19.35 | 1" NPT | 3/4" NPT | \$515.30 | |

TB Series Foot Mount

- ITEM 933
- Size 3 3/4" x 5 3/8" x 6 1/2"
- Shpg. 1 1/2 lbs.
- \$50.10**

TC Series



SPECIFICATIONS For TC Series

- Max. RPM 1800
- Shaft 1" dia. x 2 1/2" w/ 1/4" keyway
- 6 hole flange mount
- Size 8 3/4" x 6 1/2" x 5 1/2"
- Shpg. 17 lbs.

| CW Rotation | | CCW Rotation | | at 1500 PSI | | | Ports | | Price |
|-------------|--------------|--------------|--------|-------------|-------|------------|--------|----------|-------|
| ITEM | ITEM | Model | Displ. | GPM | HP | IN | OUT | | |
| 9-4102-CW | 9-4102-CCW | TC-16 | 3.18 | 24.80 | 22.18 | 1 1/4" NPT | 1" NPT | \$594.35 | |
| 990-CW | 990-CCW | TC-20 | 3.90 | 31.00 | 29.70 | 1 1/4" NPT | 1" NPT | \$594.35 | |
| 9-1217-CW * | 9-1217-CCW * | TC-24 | 4.93 | 32.55 | 30.75 | 1 1/4" NPT | 1" NPT | \$594.35 | |

* Max. RPM 1500

TC Series Foot Mount

- ITEM 990-A
- Size 3 3/4" x 5 3/8" x 6 1/2"
- Shpg. 1 1/2 lbs.
- \$51.25**