



1.2 cu. in. Hydraulic Piston Motor
ITEM 9-16027
\$449.95



• New, EATON 383BA00010 BAF020B08B hydraulic piston motor. Fixed displacement bent axis piston motor for use in open or closed circuit applications. Heavy duty bearings permit high radial and axial loads.

SPECIFICATIONS

- Displacement 1.2 cu. in. / rev.
- Motor Type Piston
- Pressure Max. 5100 PSI
- Pressure Peak 6500 PSI
- Flow 28.7 GPM max.
- Power 85.5 HP max.
- Torque Cont. 80 ft-lbs.
- Torque Peak 102 ft-lbs.
- Speed 5590 RPM max.
- Rotation Reversible
- Mount Two bolt SAE B
- Shaft 7/8" diameter x 1 1/8" with 1/4" keyway
- Ports 1" BSPP (1"-11)
- Case Drain SAE 10
- Size 8 3/4" x 7" x 5 1/2"
- Shpg. 32 lbs.

12.4 cu. in. Hydraulic Motor

ITEM 9-9324
\$149.95



• New BUCHER HYDRAULICS

SPECIFICATIONS

- Disp. 12.4 cu. in. / rev.
- Pressure: 3000 PSI cont. 3500 PSI int.
- Torque: 4800 in-lbs. cont. 5600 in-lbs. int.
- Speed: 300 RPM cont. 370 RPM int.
- Flow: 18 GPM cont. 22 GPM int.
- Relief Valve 1500 PSI (Adj.)
- Rotation Reversible
- Mount 2 bolt SAE A
- Shaft 1" dia. x 1.97" keyed
- Ports 1/2" BSPP
- Size 6 1/2" x 5 1/4" x 7"
- Shpg. 28 lbs.

3/4" NPT Hydraulic Quick Coupler

ITEM 9-16066
\$19.95



• New, QCT QC-AG series hydraulic quick coupler. For quick connect/disconnect of hydraulic hoses. Not for use when connecting under pressure. One way sleeve. Self-sealing. Interchangeable with the Parker/Pioneer 4200 Series and Safeway S20.

SPECIFICATIONS

- Ports 3/4" NPT female
- Body Size 3/4"
- Male Tip Diameter 1.10"
- Pressure 3,000 PSI
- Flow 28 GPM
- ISO 5675 dimensions
- Size 1 7/8" O.D. x 4 1/2"
- Shpg. 1 1/4 lbs.

14.1 cu. in. Hydraulic Motor
ITEM 9-12499-1
\$229.95



• New. DANFOSS WG series low speed high torque hydraulic motor.

SPECIFICATIONS

- Brand Danfoss
- Model 276230W31R1AAAAA
- Family WG Series
- Displacement 14.1 cu. in. / rev.
- Motor Type Gerotor
- Rotation Reversible
- Pressure: 1250 PSI cont. 2400 PSI int.
- Torque: 3380 in-lbs. cont. 4680 in-lbs. int.
- Speed: 240 RPM cont. 330 RPM int.
- Flow: 15 GPM cont. 20 GPM int.
- Mount 4 bolt wheel mount on 5.125" b.c.
- Shaft 1" tapered x 3.64" long w/ 1/4" keyway, threaded 3/4"-24 w/ castle nut
- Ports SAE 10
- Case Drain None
- Size 5.63" x 4.85" x 4.85"
- Shpg. 22 lbs.

Hydraulic Rotary Actuator

ITEM 9-12814
\$399.95



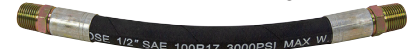
• New, HELAC T30 hydraulic rotary actuator. Dual spline output shafts. High torque, high bearing capacity, self braking and dual counterbalance valve. Foot or side mount. Includes two spline shaft couplers for welding on various attachment arms or shafts. Drive off one or both output shafts.

SPECIFICATIONS

- Model T30-27-E-FT-220/200-DS-C-H
- Operating Torque 27000 in-lbs.
- Holding Torque 54200 in-lbs.
- Maximum Primary Output Torque 66% of total
- Radial Axial Load 4500 lbs.
- Degrees Rotation 200°
- Rotation Reversible
- Displacement 44 cu.in.
- Pressure 3000 PSI
- Counter Balance Valve: 1.5:1 pilot ratio with 2.5 GPM restrictor cartridge
- Mount 8 bolt 5/8"-11, 4 bolt Foot 4.25" x 10.947" bolt centers or 4 bolt Side 5.25" wide x 8.697" bolt centers
- Dual Shafts 1.812" dia. x 1.38" long 28T spline
- Shaft Couplers 2.5" diameter x 1.85" long
- Ports SAE 4
- Size 13.21" x 5.25" x 6.65"
- Shpg. 75 lbs.

Super Savings On Hydraulic Hose

• New, one-wire braided SAE 100R17 hydraulic hose assemblies. NPT solid male pipe fittings on each end. 3000 PSI Working Pressure.



1/2" ID Hose with 1/2" NPTM Fittings

ITEM	Lgth.	Shpg.	Price
9-12820-30	30"	1 1/2 lbs.	\$6.95
9-12820-36	36"	1 1/2 lbs.	\$7.95
9-12820-48	48"	2 lbs.	\$8.95
9-12820-72	72"	3 lbs.	\$10.95
9-12820-84	84"	3 lbs.	\$11.95
9-12820-96	96"	4 lbs.	\$12.95
9-12820-108	108"	5 lbs.	\$13.95
9-12820-120	120"	6 lbs.	\$14.95
9-12820-144	144"	7 lbs.	\$16.95
9-12820-180	180"	8 lbs.	\$18.95

6.16 cu in Hydraulic Motor

ITEM 9-12235-D
\$109.95



• New Brevini.

SPECIFICATIONS

- Displacement 6.16 cu. in. / rev.
- Rotation Reversible
- Pressure: 1900 PSI cont. 2400 PSI int.
- Torque: 1416 in-lbs. cont. 1764 in-lbs. int.
- Speed: 590 RPM cont.
- Flow: 15 GPM cont. 20 GPM int.
- Mount 4 bolt on 2.32" b.c
- Shaft 1" dia. x 1.89" long w/ 1/4" keyway
- Ports SAE 10
- Size 5.54" x 3.29" x 3.39"
- Shpg. 15 lbs.

12.2 cu. in. Hydraulic Motor

ITEM 9-7567
\$148.95



• New, BUCHER Hydraulics.

SPECIFICATIONS

- Model BRGL200A18
- Disp. 12.2 cu. in. / rev.
- Motor Type Geroler
- Pressure: 2000 PSI cont. 2750 PSI int.
- Torque: 3350 in-lbs. cont. 4650 in-lbs. int.
- RPM 220 cont., 280 int
- Rotation Reversible
- Flow: 12 GPM cont. 15 GPM int.
- Mount 2 bolt SAE A
- Shaft 25 MM dia x 1 1/8" keyed
- Ports 1/2 BSPP
- Size 7 7/8" x 5 1/4" x 4"
- Shpg. 21 lbs.

Coupler Adapters

• Brand New SAFEWAY hydraulic coupler adapters. Allows interconnect of non-compatible tips and bodies. Shpg. 1 lb.

ITEM	Model	End 1 Male	End 2 Female	Price
9-12780	A FAE49-56-4	ISO 5675 (Pioneer Universal Ag 1/2")	Flush Face ISO 16028	\$65.85
9-12781	B FAE56-49-4	Flush Face ISO 16028	ISO 5675 (Pioneer Universal Ag 1/2")	\$50.70
9-12782	C S25-4-1	John Deere (Old Style)	ISO 5675 (Pioneer Universal Ag 1/2")	\$19.30
9-12783	D S25-4-2	International Harvester (Old Style)	ISO 5675 (Pioneer Universal Ag I 1/2")	\$22.00
9-12784	E S25-4-3	ISO 5675 (Pioneer Universal Ag 1/2")	John Deere Cone (Old Style)	\$24.35
9-12785	F S25-4-3D	John Deere New Style ISO Casting	John Deere Cone (Old Style)	\$30.80
9-12786	G S25-4-4	International Harvester (Old Style)	John Deere Cone (Old Style)	\$25.10
9-12787	H S25-4-5	John Deere Cone (Old Style)	International Harvester (Old Style)	\$28.90
9-12788	I S25-4-6	J.I. Case Old Style	ISO 5675 (Pioneer Universal Ag 1/2")	\$22.15
9-12789	J S25-4-7	International Harvester (Old Style)	ISO 5675 (Pioneer Universal Ag 1/2")	\$26.05
9-12790	K S25-4-7D	ISO 5675 (Pioneer Universal Ag 1/2")	International Harvester (Old Style)	\$32.40
9-12791	L S25-4-9	J.I. Case Old Style	John Deere Cone (Old Style)	\$26.55

