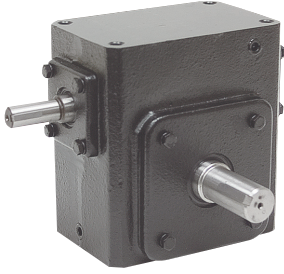
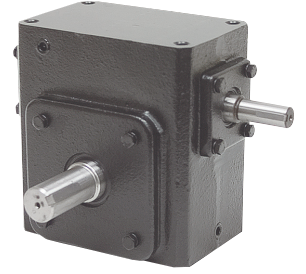




Shaft to Shaft Gearboxes



- Brand new, WORLDWIDE ELECTRIC right-angle worm gear reducers.
- Cast iron housing. Four tapped mounting holes on top and bottom of case. Rated for 1750 RPM maximum input speed. Keyed input and output shafts.
- Shipped filled with oil. Mounting bases sold separately, available on our website.



* Products drop-shipped from the manufacturer are not returnable.

Right Output

Left Output

Ratio	ITEM Number		Output in. lbs. Overhung			Input Shaft		Output Shaft		4 Bolt Mount		Price
	Left Output	Right Output	HP	RPM	Torque	Load	Centers	Shpg.				
5	13-133-5-L	13-133-5-R	1.15	350	209	190	1/2" dia. x 1 5/16"	5/8" dia. x 2"	3/4" x 2"	15 lbs.	\$139.20	
	13-175-5-L	13-175-5-R	2.83	350	499	228	5/8" dia. x 1 9/16"	7/8" dia. x 1 25/32"	4 3/16" x 2 3/4"	23 lbs.	\$168.00	
	13-206-5-L*	13-206-5-R	3.62	350	925	238	5/8" dia. x 1 9/16"	1" dia. x 2 3/32"	5" x 2 7/8"	28 lbs.	\$201.20	
	13-237-5-L	13-237-5-R	4.32	350	766	316	3/4" dia. x 2"	1 1/8" dia. x 2 3/8"	5" x 2 7/8"	37 lbs.	\$230.75	
	13-262-5-L	13-262-5-R*	5.24	350	924	333	3/4" dia. x 2"	1 1/8" dia. x 2 5/8"	6 3/8" x 3 3/8"	51 lbs.	\$283.40	
	13-325-5-L*	13-325-5-R	9.72	350	1724	302	7/8" dia. x 2 7/16"	1 3/8" dia. x 3 1/4"	7 1/2" x 4"	82 lbs.	\$399.50	
10	13-133-10-L	13-133-10-R	0.77	175	247	220	1/2" dia. x 1 5/16"	5/8" dia. x 2"	3/4" x 2"	15 lbs.	\$139.20	
	13-175-10-L	13-175-10-R	1.57	175	515	272	5/8" dia. x 1 9/16"	7/8" dia. x 1 25/32"	4 3/16" x 2 3/4"	23 lbs.	\$168.00	
	13-206-10-L*	13-206-10-R	2.77	175	935	283	5/8" dia. x 1 9/16"	1" dia. x 2 3/32"	5" x 2 7/8"	28 lbs.	\$201.20	
	13-237-10-L	13-237-10-R*	3.47	175	1158	378	3/4" dia. x 2"	1 1/8" dia. x 2 3/8"	5" x 2 7/8"	37 lbs.	\$230.75	
	13-262-10-L	13-262-10-R	4.17	175	1445	398	3/4" dia. x 2"	1 1/8" dia. x 2 5/8"	6 3/8" x 3 3/8"	51 lbs.	\$283.40	
	13-325-10-L	13-325-10-R*	7.19	175	2419	369	7/8" dia. x 2 7/16"	1 3/8" dia. x 3 1/4"	7 1/2" x 4"	82 lbs.	\$399.50	
15	13-133-15-L	13-133-15-R	0.63	120	283	254	1/2" dia. x 1 5/16"	5/8" dia. x 2"	3/4" x 2"	15 lbs.	\$139.20	
	13-175-15-L	13-175-15-R*	1.24	120	554	324	5/8" dia. x 1 9/16"	7/8" dia. x 1 25/32"	4 3/16" x 2 3/4"	23 lbs.	\$168.00	
	13-206-15-L*	13-206-15-R*	2.09	120	1002	337	5/8" dia. x 1 9/16"	1" dia. x 2 3/32"	5" x 2 7/8"	28 lbs.	\$201.20	
	13-237-15-L*	13-237-15-R*	2.64	120	1249	451	3/4" dia. x 2"	1 1/8" dia. x 2 3/8"	5" x 2 7/8"	37 lbs.	\$230.75	
	13-262-15-L*	13-262-15-R*	3.22	120	1577	475	3/4" dia. x 2"	1 1/8" dia. x 2 5/8"	6 3/8" x 3 3/8"	51 lbs.	\$283.40	
	13-325-15-L*	13-325-15-R*	5.45	120	2611	450	7/8" dia. x 2 7/16"	1 3/8" dia. x 3 1/4"	7 1/2" x 4"	82 lbs.	\$399.50	
20	13-133-20-L	13-133-20-R	0.50	88	276	254	1/2" dia. x 1 5/16"	5/8" dia. x 2"	3/4" x 2"	15 lbs.	\$139.20	
	13-175-20-L	13-175-20-R	1.26	88	737	378	5/8" dia. x 1 9/16"	7/8" dia. x 1 25/32"	4 3/16" x 2 3/4"	23 lbs.	\$168.00	
	13-206-20-L	13-206-20-R	1.57	88	914	394	5/8" dia. x 1 9/16"	1" dia. x 2 3/32"	5" x 2 7/8"	28 lbs.	\$201.20	
	13-237-20-L	13-237-20-R	2.06	88	1195	530	3/4" dia. x 2"	1 1/8" dia. x 2 3/8"	5" x 2 7/8"	37 lbs.	\$230.75	
	13-262-20-L	13-262-20-R	2.67	88	1563	558	3/4" dia. x 2"	1 1/8" dia. x 2 5/8"	6 3/8" x 3 3/8"	51 lbs.	\$283.40	
	13-325-20-L	13-325-20-R	4.74	88	2875	526	7/8" dia. x 2 7/16"	1 3/8" dia. x 3 1/4"	7 1/2" x 4"	82 lbs.	\$399.50	
30	13-133-30-L	13-133-30-R	0.47	58	336	254	1/2" dia. x 1 5/16"	5/8" dia. x 2"	3/4" x 2"	15 lbs.	\$139.20	
	13-175-30-L	13-175-30-R	0.89	58	666	419	5/8" dia. x 1 9/16"	7/8" dia. x 1 25/32"	4 3/16" x 2 3/4"	23 lbs.	\$168.00	
	13-206-30-L	13-206-30-R	1.65	58	1310	436	5/8" dia. x 1 9/16"	1" dia. x 2 3/32"	5" x 2 7/8"	28 lbs.	\$201.20	
	13-237-30-L*	13-237-30-R	1.82	58	1507	581	3/4" dia. x 2"	1 1/8" dia. x 2 3/8"	5" x 2 7/8"	37 lbs.	\$230.75	
	13-262-30-L	13-262-30-R	2.22	58	1827	612	3/4" dia. x 2"	1 1/8" dia. x 2 5/8"	6 3/8" x 3 3/8"	51 lbs.	\$283.40	
	13-325-30-L	13-325-30-R	3.66	58	3045	585	7/8" dia. x 2 7/16"	1 3/8" dia. x 3 1/4"	7 1/2" x 4"	82 lbs.	\$399.50	
40	13-133-40-L	13-133-40-R*	0.38	44	356	254	1/2" dia. x 1 5/16"	5/8" dia. x 2"	3/4" x 2"	15 lbs.	\$139.20	
	13-175-40-L	13-175-40-R	0.79	44	714	495	5/8" dia. x 1 9/16"	7/8" dia. x 1 25/32"	4 3/16" x 2 3/4"	23 lbs.	\$168.00	
	13-206-40-L	13-206-40-R	1.09	44	1120	515	5/8" dia. x 1 9/16"	1" dia. x 2 3/32"	5" x 2 7/8"	28 lbs.	\$201.20	
	13-237-40-L*	13-237-40-R*	1.45	44	1483	684	3/4" dia. x 2"	1 1/8" dia. x 2 3/8"	5" x 2 7/8"	37 lbs.	\$230.75	
	13-262-40-L*	13-262-40-R	1.85	44	1919	720	3/4" dia. x 2"	1 1/8" dia. x 2 5/8"	6 3/8" x 3 3/8"	51 lbs.	\$283.40	
	13-325-40-L	13-325-40-R	3.35	44	3692	697	7/8" dia. x 2 7/16"	1 3/8" dia. x 3 1/4"	7 1/2" x 4"	82 lbs.	\$399.50	
50	13-133-50-L	13-133-50-R*	0.29	35	312	254	1/2" dia. x 1 5/16"	5/8" dia. x 2"	3/4" x 2"	15 lbs.	\$139.20	
	13-175-50-L	13-175-50-R*	0.50	35	538	564	5/8" dia. x 1 9/16"	7/8" dia. x 1 25/32"	4 3/16" x 2 3/4"	23 lbs.	\$168.00	
	13-206-50-L	13-206-50-R*	0.74	35	830	587	5/8" dia. x 1 9/16"	1" dia. x 2 3/32"	5" x 2 7/8"	28 lbs.	\$201.20	
	13-237-50-L	13-237-50-R*	1.32	35	1527	763	3/4" dia. x 2"	1 1/8" dia. x 2 3/8"	5" x 2 7/8"	37 lbs.	\$230.75	
	13-262-50-L	13-262-50-R*	1.37	35	1658	803	3/4" dia. x 2"	1 1/8" dia. x 2 5/8"	6 3/8" x 3 3/8"	51 lbs.	\$283.40	
	13-325-50-L	13-325-50-R	2.49	35	3413	803	7/8" dia. x 2 7/16"	1 3/8" dia. x 3 1/4"	7 1/2" x 4"	82 lbs.	\$399.50	
60	13-133-60-L	13-133-60-R	0.23	29	158	254	1/2" dia. x 1 5/16"	5/8" dia. x 2"	3/4" x 2"	15 lbs.	\$139.20	
	13-175-60-L	13-175-60-R*	0.38	29	433	613	5/8" dia. x 1 9/16"	7/8" dia. x 1 25/32"	4 3/16" x 2 3/4"	23 lbs.	\$168.00	
	13-206-60-L	13-206-60-R	0.60	29	750	639	5/8" dia. x 1 9/16"	1" dia. x 2 3/32"	5" x 2 7/8"	28 lbs.	\$201.20	
	13-237-60-L	13-237-60-R	0.86	29	1149	838	3/4" dia. x 2"	1 1/8" dia. x 2 3/8"	5" x 2 7/8"	37 lbs.	\$230.75	
	13-262-60-L	13-262-60-R	1.16	29	1670	882	3/4" dia. x 2"	1 1/8" dia. x 2 5/8"	6 3/8" x 3 3/8"	51 lbs.	\$283.40	
	13-325-60-L	13-325-60-R	2.03	29	3127	882	7/8" dia. x 2 7/16"	1 3/8" dia. x 3 1/4"	7 1/2" x 4"	82 lbs.	\$399.50	