

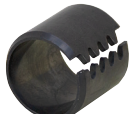


## Vogelsang Tension Bushings

• Brand new, Vogelsang Fastener tension bushings used with hydraulic cylinders, grapples, off-road equipment. Installed into slow rotating pivot joints they provide high load capacity and wear resistance. Wavy slot design for consistent alignment during installation. Heat treated 6150 high carbon steel with chamfered ends. Order by Bore, O.D., Length.



1-5593



1-5613



1-5633



1-5674

Outside Bore	Outside Dia.		ITEM	Shpg. lbs.	Price	Outside Bore	Outside Dia.		ITEM	Shpg. lbs.	Price	
	1/2"	3/4"					1/2"	3/4"				
1/2"	3/4"	1/2"	1-5582	0.03	\$9.30	1/2"	1 3/4"	1 1/4"	1-5629	0.22	\$6.45	
	3/4"	3/4"	1-5583	0.05	\$9.60		1 3/4"	1 1/2"	1-5630	0.27	\$8.55	
	3/4"	1"	1-5584	0.07	\$9.85		1 3/4"	2"	1-5631	0.35	\$9.54	
3/4"	1"	1/2"	1-5585	0.05	\$3.35	1 1/2"	1 3/4"	2 1/2"	1-5632	0.44	\$12.85	
	1"	5/8"	1-5586	0.06	\$3.13		1 3/4"	2 3/4"	1-5633	0.48	\$13.95	
	1"	3/4"	1-5587	0.07	\$3.65		1 7/8"	3/4"	1-5634	0.21	\$17.40	
	1"	1"	1-5588	0.09	\$3.70		1 7/8"	1"	1-5635	0.27	\$18.45	
	1"	1 1/4"	1-5589	0.12	\$5.20		1 7/8"	1 1/4"	1-5636	0.34	\$19.15	
	1"	1 1/2"	1-5590	0.14	\$4.90		1 7/8"	1 1/2"	1-5637	0.42	\$20.20	
	1"	2"	1-5591	0.18	\$7.00		1 7/8"	2"	1-5638	0.55	\$25.90	
1"	1 1/4"	1/2"	1-5592	0.06	\$3.50	1 3/4"	2"	1"	1-5639	0.39	\$15.55	
	1 1/4"	5/8"	1-5593	0.08	\$3.80		2"	1 1/4"	1-5640	0.48	\$19.70	
	1 1/4"	3/4"	1-5594	0.09	\$3.45		2"	1 1/2"	1-5641	0.58	\$21.00	
	1 1/4"	7/8"	1-5595	0.11	\$4.15		2"	2"	1-5642	0.77	\$25.00	
	1 1/4"	1"	1-5596	0.12	\$3.80		2"	3"	1-5643	1.5	\$28.35	
	1 1/4"	1 1/4"	1-5597	0.15	\$5.10		2"	3/4"	1-5644	0.15	\$7.55	
	1 1/4"	1 1/2"	1-5598	0.18	\$5.05			2"	1"	1-5645	0.2	\$11.20
	1 1/4"	2"	1-5599	0.24	\$6.85			2"	1 1/4"	1-5646	0.26	\$11.75
	1 3/8"	3/4"	1-5600	0.14	\$7.90			2"	1 1/2"	1-5647	0.3	\$12.35
	1 1/8"	1 3/8"	1"	1-5601	0.19		\$8.35	2"	2"	1-5648	0.4	\$14.90
1 3/8"		1 1/4"	1-5602	0.24	\$8.80	2 1/4"	1"	1-5649	0.44	\$20.60		
1 3/8"		1 1/2"	1-5603	0.29	\$9.30	2 1/4"	2"	1-5650	0.88	\$39.35		
1 1/2"		1"	1-5607	0.26	\$24.50	2 1/4"	2 1/2"	1-5651	1.5	\$45.55		
1 1/2"		1 1/2"	1-5608	0.4	\$20.02	2 1/4"	1 1/2"	1-5652	0.35	\$14.05		
1 1/8"		1 3/8"	3/4"	1-5604	0.11		\$9.05	2 1/4"	2"	1-5653	0.46	\$15.80
		1 3/8"	1"	1-5605	0.14	\$9.50	2 3/8"	3/4"	1-5654	0.26	\$13.25	
		1 3/8"	1 1/2"	1-5606	0.2	\$10.15	2 3/8"	1"	1-5655	0.35	\$14.55	
1 1/4"		1 1/2"	1/2"	1-5609	0.07	\$3.70	2 3/8"	1 1/4"	1-5656	0.44	\$16.45	
		1 1/2"	3/4"	1-5610	0.11	\$4.25	2 3/8"	1 1/2"	1-5657	0.54	\$18.80	
	1 1/2"	1"	1-5611	0.15	\$4.45	2 3/8"	2"	1-5658	0.72	\$23.15		
	1 1/2"	1 1/4"	1-5612	0.19	\$4.73	2 3/8"	3"	1-5659	1.5	\$32.00		
	1 1/2"	1 1/2"	1-5613	0.22	\$5.85	2 1/2"	1 1/2"	1-5660	0.49	\$21.25		
	1 1/2"	2"	1-5614	0.29	\$8.70		2 1/2"	1 1/2"	1-5661	0.74	\$21.85	
	1 1/2"	2 1/2"	1-5615	0.37	\$10.55		2 1/2"	2"	1-5662	0.99	\$25.95	
	1 1/2"	3"	1-5616	0.44	\$10.40		2 1/2"	2 1/2"	1-5663	1.5	\$31.00	
	1 3/8"	1 5/8"	3/4"	1-5617	0.17	\$9.75	2 1/2"	3"	1-5664	2	\$34.40	
		1 5/8"	1"	1-5618	0.23	\$13.75	3"	1"	1-5665	0.61	\$27.95	
1 5/8"		1 1/4"	1-5619	0.29	\$10.70	3"		1 1/2"	1-5666	0.91	\$27.90	
1 5/8"		1 1/2"	1-5620	0.35	\$15.70	3"		2"	1-5667	1.5	\$33.39	
1 5/8"		2"	1-5621	0.46	\$13.95	3"		2 1/2"	1-5668	2	\$47.65	
1 1/2"		1 5/8"	1 1/2"	1-5622	0.25	\$16.16	3"	3"	3"	1-5669	2.5	\$42.50
		1 5/8"	1 1/4"	1-5623	0.32	\$13.15		3 1/2"	1"	1-5670	0.72	\$25.95
		1 5/8"	1 1/2"	1-5624	0.38	\$16.20		3 1/2"	1 1/2"	1-5671	1.09	\$33.70
		1 5/8"	2"	1-5625	0.5	\$20.80		3 1/2"	2"	1-5672	2	\$37.34
1 1/2"		1 3/4"	1 1/2"	1-5626	0.09	\$4.00	3 1/2"	2 1/2"	1-5673	2.3	\$44.35	
	1 3/4"	3/4"	1-5627	0.13	\$5.10	3 1/2"	3"	1-5674	2.6	\$51.34		
	1 3/4"	1"	1-5628	0.18	\$6.25							

## Brass Ball Valves

• New, CHAMPION-ARROWHEAD lead-free brass ball valves. Valves meet NSF61-9 regulations and California's AB-1953 regulations. All are full port.



20-1652



20-1656

ITEM	Model Number	Ports	PSI (CWP) Max.	Shpg.	Price
20-1652-50	BV12FPT600LF	1/2" NPT FIP	600	1/2 lb.	\$4.99
20-1653-50	BV12SWT600LF	1/2" copper sweat	600	1/2 lb.	\$3.99
20-1653-75	BV34SWT600LF	3/4" copper sweat	600	1 lb.	\$4.99
20-1654-100	BV100CMP200LF	1" Copper compression	232	1 1/2 lbs.	\$7.99
20-1656-100	BV100PSH200LF	1" Push-Fit	232	1 1/2 lbs.	\$7.99

## Tractor Spray Pumps

• Brand new. HYPRO roller pumps give high volume and pressure for all types of agricultural spraying. Rotation can be reversed by disassembly. Super Rollers are compatible with a wide variety of chemicals. Cast iron body for general purpose spraying.

### 18 GPM, 8 Roller Pump



ITEM 267-CP  
**\$259.90**



#### SPECIFICATIONS

- 18 GPM, 8 Roller Pump
- Model 7560-C
- 18.3 GPM
- 300 PSI
- 850 RPM
- 4.5 HP max
- Ports 3/4" NPT
- CCW rotation
- Stainless Steel Shaft 1 5/16" dia x 2"
- Ball Bearings
- Replaceable rollers, seals
- 6 7/8" x 6 1/2" x 6 1/2"
- Shpg 18 lbs.

#### PERFORMANCE TABLE

SPEED RPM	0 PSI		100 PSI		300 PSI	
	GPM	HP	GPM	HP	GPM	HP
550	12.0	1/4	10.6	1 1/4	8.0	3
850	18.3	1/2	16.9	1 1/2	14.2	4 1/2

### 22 GPM, 7 Roller Pump

ITEM 268-CP  
**\$264.10**



#### SPECIFICATIONS

- 22.4 GPM
- 200 PSI
- 850 RPM
- 1 1/4 HP max
- Ports 3/4" NPT
- CCW rotation
- Stainless Steel Shaft 1 5/16" dia x 2 1/16"
- Ball Bearings
- Replaceable rollers, seals
- 6 7/8" x 6 5/8" x 6"
- Shpg 18 lbs.

#### PERFORMANCE TABLE

SPEED RPM	0 PSI		100 PSI		200 PSI	
	GPM	HP	GPM	HP	GPM	HP
550	15	1/4	12.8	3/4	11.4	1 1/4
850	22.4	1/2	20.6	1 1/4	19.1	1 3/4

### 20 GPM, 6 Roller Pump

ITEM 278-CP  
**\$198.95**



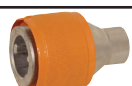
#### SPECIFICATIONS

- 19.5 GPM
- 300 PSI
- 400 to 1200 RPM
- Ports 3/4" NPT
- CCW rotation
- Shaft 5/8" diam. x 1 1/2"
- Ball bearings
- Replaceable rollers, seals
- Size 6" x 5 3/4" x 2 1/2"
- Shpg 12 lbs.

#### PERFORMANCE TABLE

SPEED RPM	0 PSI		100 PSI		300 PSI	
	GPM	HP	GPM	HP	GPM	HP
540	9.1	0.21	6.5	0.81	3.3	2.10
1200	19.5	0.69	17.3	1.80	14.1	4.51

## Roller Pump Quick Couplers



• Brand new. Use to connect Hypro roller pumps to standard tractor 1 3/8" 6 spline 540 RPM PTO shafts. Die cast construction with quick release collar.

ITEM 1321-0006 **\$46.20**

• Fits onto 5/8" pump shafts (6 roller pumps). Shpg. 4 lbs.

ITEM 1321-0007 **\$50.05**

• Fits onto 1 5/16" pump shafts (7 & 8 roller pumps). Shpg. 4 lbs.