

Weld-on Roller Chain Sprockets & Hubs

• Brand new. Weld on roller chain sprocket and hub assembly allows multiple combination of bore to sprocket types. Hubs have machined pilot for sprocket to slip over for easy alignment and welding. Keyway slot and set screw furnished with hub.

• **ORDERING:** Select sprocket by chain pitch and number of teeth, THEN select hub with matching letter code (V, W, X) and desired bore size.

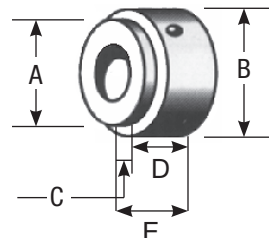


# Teeth	40 Pitch				50 Pitch				60 Pitch			
	ITEM	Dia	Hub	Price	ITEM	Dia	Hub	Price	ITEM	Dia	Hub	Price
9	-	-	-	-	1-1980-9	2.09	V	\$5.15	1-1981-9	2.51	V	\$6.60
10	-	-	-	-	1-1980-10	2.30	V	\$5.15	1-1981-10	2.76	V	\$6.95
11	1-1979-11	2.00	V	\$4.25	1-1980-11	2.50	V	\$5.95	1-1981-11	3.00	W	\$7.35
12	1-1979-12	2.17	V	\$4.35	1-1980-12	2.71	W	\$6.45	1-1981-12	3.25	W	\$8.25
13	1-1979-13	2.33	V	\$4.60	1-1980-13	2.92	W	\$6.65	1-1981-13	3.49	W	\$8.35
14	1-1979-14	2.49	V	\$4.80	1-1980-14	3.12	W	\$7.05	1-1981-14	3.74	W	\$9.20
15	1-1979-15	2.65	V	\$4.95	1-1980-15	3.32	W	\$7.55	1-1981-15	3.98	X	\$10.00
16	1-1979-16	2.82	W	\$5.20	1-1980-16	3.52	W	\$7.75	1-1981-16	4.22	X	\$10.35
17	1-1979-17	2.98	W	\$5.70	1-1980-17	3.72	X	\$8.70	1-1981-17	4.47	X	\$11.80
18	1-1979-18	3.14	W	\$5.95	1-1980-18	3.92	X	\$8.85	1-1981-18	4.7	X	\$12.60
19	1-1979-19	3.23	W	\$6.25	1-1980-19	4.13	X	\$9.65	1-1981-19	4.95	X	\$13.85
20	1-1979-20	3.48	X	\$6.75	1-1980-20	4.33	X	\$10.20	1-1981-20	5.19	X	\$15.35
21	1-1979-21	3.62	X	\$7.50	1-1980-21	4.53	X	\$10.95	1-1981-21	5.46	X	\$16.80
22	1-1979-22	3.78	X	\$8.00	1-1980-22	4.72	X	\$11.70	1-1981-22	5.67	X	\$18.25
23	1-1979-23	3.94	X	\$8.60	1-1980-23	4.92	X	\$12.20	1-1981-23	5.91	X	\$19.80
24	1-1979-24	4.1	X	\$9.35	1-1980-24	5.13	X	\$12.95	1-1981-24	6.15	X	\$20.30
25	1-1979-25	4.26	X	\$9.90	1-1980-25	5.33	X	\$13.90	1-1981-25	6.4	X	\$21.85
26	1-1979-26	4.42	X	\$10.45	1-1980-26	5.53	X	\$14.95	1-1981-26	6.63	X	\$23.50
27	-	-	-	-	1-1980-27	5.72	X	\$16.05	1-1981-27	6.87	X	\$25.10
28	1-1979-28	4.74	X	\$11.45	1-1980-28	5.93	X	\$17.00	1-1981-28	7.15	X	\$26.90
29	1-1979-29	4.90	X	\$12.25	1-1980-29	6.12	X	\$17.75	1-1981-29	7.35	X	\$28.65
30	1-1979-30	5.06	X	\$13.00	1-1980-30	6.32	X	\$19.25	1-1981-30	7.59	X	\$30.20
31	1-1979-31	5.22	X	\$13.75	1-1980-31	6.52	X	\$20.20	1-1981-31	7.83	X	\$32.25
32	1-1979-32	5.38	X	\$14.55	1-1980-32	6.72	X	\$20.80	1-1981-32	8.07	X	\$33.60
33	1-1979-33	5.54	X	\$15.45	1-1980-33	6.92	X	\$22.00	1-1981-33	8.30	X	\$36.20
34	1-1979-34	5.70	X	\$16.25	1-1980-34	7.12	X	\$22.75	1-1981-34	8.54	X	\$38.25
35	1-1979-35	5.86	X	\$17.25	1-1980-35	7.32	X	\$23.80	1-1981-35	8.78	X	\$40.00
36	1-1979-36	6.02	X	\$18.05	1-1980-36	7.52	X	\$25.85	1-1981-36	9.02	X	\$33.30
37	1-1979-37	6.18	X	\$11.25	1-1980-37	7.72	X	\$28.05	1-1981-37	9.26	X	\$35.80
38	1-1979-38	6.33	X	\$19.90	1-1980-38	7.92	X	\$29.50	1-1981-38	9.50	X	\$37.20
39	1-1979-39	6.49	X	\$20.45	1-1980-39	8.12	X	\$30.00	-	-	-	-
40	1-1979-40	6.65	X	\$20.25	1-1980-40	8.32	X	\$30.30	1-1981-40	9.98	X	\$39.50
41	1-1979-41	6.81	X	\$20.95	1-1980-41	8.52	X	\$31.95	1-1981-41	10.22	X	\$40.20
42	1-1979-42	6.97	X	\$22.25	1-1980-42	8.72	X	\$33.75	1-1981-42	10.46	X	\$41.50
43	1-1979-43	7.13	X	\$23.05	1-1980-43	8.91	X	\$25.75	1-1981-43	10.70	X	\$38.90
44	1-1979-44	7.29	X	\$24.85	1-1980-44	9.11	X	\$36.45	1-1981-44	10.94	X	\$46.75
45	1-1979-45	7.45	X	\$25.30	1-1980-45	9.31	X	\$37.85	1-1981-45	11.18	X	\$47.30
46	1-1979-46	7.61	X	\$25.90	1-1980-46	9.51	X	\$40.00	1-1981-46	11.42	X	\$50.60
48	1-1979-48	7.93	X	\$28.70	1-1980-48	9.91	X	\$33.40	1-1981-48	11.89	X	\$53.45
50	1-1979-50	8.25	X	\$33.40	1-1980-50	10.31	X	\$36.45	-	-	-	-
52	-	-	-	-	1-1980-52	10.71	X	\$37.15	-	-	-	-
54	1-1979-54	8.89	X	\$35.40	1-1980-54	11.11	X	\$42.00	1-1981-54	13.33	X	\$66.75
60	1-1979-60	9.84	X	\$30.95	1-1980-60	12.30	X	\$50.70	1-1981-60	14.76	X	\$85.30
72	1-1979-72	11.75	X	\$45.25	1-1980-72	14.69	X	\$80.50	-	-	-	-

80 Pitch

Teeth	ITEM	Dia	Hub	Price	Teeth	ITEM	Dia	Hub	Price	Teeth	ITEM	Dia	Hub	Price
9	1-1982-9	3.34	W	\$13.70	16	1-1982-16	5.63	X	\$21.90	23	1-1982-23	7.87	X	\$34.70
10	1-1982-10	3.68	W	\$14.05	17	1-1982-17	5.95	X	\$24.95	24	1-1982-24	8.2	X	\$34.95
11	1-1982-11	4.01	W	\$14.45	18	1-1982-18	6.27	X	\$28.80	25	1-1982-25	8.51	X	\$36.40
12	1-1982-12	4.33	X	\$15.10	19	1-1982-19	6.59	X	\$32.10	26	1-1982-26	8.83	X	\$38.70
13	1-1982-13	4.66	X	\$16.30	20	1-1982-20	6.91	X	\$36.30	27	1-1982-27	9.16	X	\$39.70
14	1-1982-14	4.98	X	\$18.65	21	1-1982-21	7.23	X	\$39.65	28	1-1982-28	9.48	X	\$41.30
15	1-1982-15	5.3	X	\$20.50	22	1-1982-22	7.55	X	\$31.85	29	1-1982-29	9.8	X	\$43.75
										30	1-1982-30	10.11	X	\$47.45

Dimensions of Hubs



All hubs furnished with standard keyway and two setscrews.

	V Hub	W Hub	X Hub
A	1 1/8"	A 1 5/8"	A 2"
B	1 7/16"	B 1 13/16"	B 2 1/2"
C	7/16"	C 7/16"	C 7/16"
D	3/4"	D 1"	D 1"
E	1 3/16"	E 1 7/16"	E 1 7/16"

Bore	V Hub	W Hub	X Hub
1/2"	1-2341-A	1-2342-A	-
9/16"	1-2341-B	1-2342-B	-
5/8"	1-2341-C	1-2342-C	1-2343-C
1 1/16"	1-2341-D	1-2342-D	1-2343-D
3/4"	1-2341-E	1-2342-E	1-2343-E
13/16"	1-2341-F	1-2342-F	1-2343-F
7/8"	1-2341-G	1-2342-G	1-2343-G
15/16"	-	1-2342-H	1-2343-H
1"	-	1-2342-I	1-2343-I
1 1/16"	-	1-2342-J	1-2343-J
1 1/8"	-	1-2342-K	1-2343-K
1 3/16"	-	1-2342-L	1-2343-L
1 1/4"	-	1-2342-M	1-2343-M
1 5/16"	-	-	1-2343-N
1 3/8"	-	-	1-2343-O
1 7/16"	-	-	1-2343-P
1 1/2"	-	-	1-2343-Q
3/4" Hex	-	1-2342-EHX	-
7/8" Hex	-	1-2342-GHX	-
1 1/4" Hex	-	1-2342-MHX	-
1 1/8" 6 Spl	-	1-2342-KSP	-
Shpg.	1 lb.	1 1/2 lbs.	2 lbs.
Price	\$6.30	\$7.75	\$9.75

1" 15 Spline Bore
ITEM 1-2342-15SP
\$16.45

• W hub. Shpg. 1 1/2 lbs.



1 3/4" 20 Spline Bore
ITEM 1-2343-20SPB
\$28.95

• X hub. Shpg. 2 lbs.

