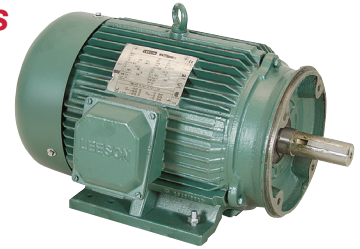




Premium Efficiency Three Phase Motors

• Brand new LEESON/Marathon motors. Meets or exceeds NEMA premium efficiency standards. Cast iron frame and base. No overload protection. Available as base mount only or as face & base mount. Keyed shafts. All motors over 150 lbs. ship truck freight only. All motors are 1800 RPM.



SPECIFICATIONS FOR ALL

- Voltage 208-230/460 VAC
- Electrically reversible
- Continuous duty
- Service factor 1.15
- Enclosure TEFC
- Ball bearings

Base Mount							Face & Base Mount						
ITEM	Model	HP	Amps	Frame	Shpg.	Price	ITEM	Model	HP	Amps	Frame	Shpg.	Price
10-2721	120921	1	3.2/1.6	145T	50 lbs.	\$528.00	10-3380	121179.00	1	3.2/1.6	145TC	35 lbs.	\$847.15
*10-3386	145TTFR16033	1½	4.8/2.4	145T	54 lbs.	\$589.95	10-2735	121180	1½	4.8/2.4	145TC	37 lbs.	\$908.55
*10-2724	182TTFC6026	3	8.0/4.0	182T	104 lbs.	\$498.65	*10-3368	145TTFB16028	2	5.8/2.7	145TC	59 lbs.	\$836.95
*10-2725	184TTFC6026	5	12.8/6.4	184T	109 lbs.	\$571.25	10-2737	182TTFB6028	3	8/4	182TC	104 lbs.	\$491.45
*10-2726	213TTFC6026	7½	19.0/9.5	213T	205 lbs.	\$819.15	*10-2738	184TTFB6028	5	13.0/6.5	184TC	109 lbs.	\$523.90
10-2727	215TTFC6026	10	25/12.5	215T	227 lbs.	\$923.65	*10-2739	213TTFB6028	7½	19.0/9.5	213TC	205 lbs.	\$698.60
10-2728	254TTFC6026	15	36/18	254T	330 lbs.	\$1316.70	10-2740	215TTFB6028	10	25/12.5	215TC	217 lbs.	\$856.05
10-2729	256TTFC6026	20	49/24.5	256T	372 lbs.	\$1435.40	*10-3389	254TTFC6028	15	37/18	254TC	340 lbs.	\$1250.00
*10-2730	284TTFC6026	25	61.0/30.5	284T	435 lbs.	\$1684.90	10-2742	256TTFC6028	20	49/24.5	256TC	382 lbs.	\$1426.80
*10-3369	286TTFC6026	30	78.0/35.5	286T	540 lbs.	\$1355.65	10-2743	284TTFC6028	25	59/29.5	284TC	445 lbs.	\$1763.50
*10-2732	324TTFC6026	40	95.0/47.5	324T	625 lbs.	\$2422.80	*10-2744	286TTFC6028	30	72.5/36.5	286TC	482 lbs.	\$1841.90
*10-2733	326TTFC6026	50	117/58.5	326T	637 lbs.	\$2953.45	*10-2745	324TTFC6028	40	95/47.5	324TC	646 lbs.	\$2478.80
10-2817	364TTFC6036	60	139/69.5	364T	900 lbs.	\$4026.55	10-2746	326TTFC6028	50	117/58.5	326TC	647 lbs.	\$3095.50
*Motors below Drop Ship Freight FREE in lower 48 states.													
10-2818	365TTFC6036	75	171/85	365T	1030 lbs.	\$5019.60	Motor Frame and Shaft Size	Base Mount		Face Mount		Shaft	
10-2819	405TTFC6036	100	225/112.5	405T	1070 lbs.	\$5975.25		56	56C	5/8" dia. x 1 1/8", 3/16" keyway			
10-2820**	444TTFC6036	125	137.5	444T	1580 lbs.	\$8486.10		145T	145TC	7/8" dia. x 2 1/4", 3/16" keyway			
10-2821**	445TTFC6036	150	163	445T	1630 lbs.	\$9606.70		182T, 184T	182TC, 184TC	1 1/8" dia. x 2 3/4", 5/16" keyway			
10-2822**	447TTFC6038	200	219	447T	2790 lbs.	\$11476.40		213T, 215T	213TC, 215TC	1 3/8" dia. x 3 3/8", 5/16" keyway			
10-2823**	171516.60	250	275	449T	2550 lbs.	\$26552.30		254T, 256T	254TC, 256TC	1 5/8" dia. x 4", 3/8" keyway			
10-2824**	171529.60	300	330	449T	2560 lbs.	\$30037.15		284T, 286T	284TC, 286TC	1 7/8" dia. x 4 9/8", 1/2" keyway			
* Marathon **460 VAC Only							405T, 444T		324TC, 326TC	2 1/8" dia. x 5 1/4", 1/2" keyway			
						405T, 444T		364T, 365T	2 3/8" dia. x 5 7/8", 5/8" keyway				
						405T, 444T		405T, 444T	2 7/8" dia. x 7", 3/4" keyway				
						445T, 447T, 449T		445T, 447T, 449T	3 3/8" dia. x 8 1/2", 7/8" keyway				



*Products drop-shipped from the manufacturer are not returnable.

1/3 HP 3450 RPM 3PH 208-230/460 VAC Motor



ITEM 10-3338
\$49.99

• New, TECHTOP 3PH electric motor model# BL3-AL-TF-56C-2-B-D-.33

SPECIFICATIONS

- Brand Techtop
- Model BL3-AL-TF-56C-2-B-D-.33
- Power 1/3 HP
- Voltage 208-230/460 VAC
- Phase 3
- Frequency 60 hz
- Amps 1.5-1.36/0.68
- RPM 3450
- Rotation Reversible
- Service Factor 1.35
- Enclosure TEFC
- Duty Continuous
- Frame 56C
- Face Mount Four 3/8"-16 tapped holes on 5 7/8" bolt circle
- Rigid Base Mount Four hole on 4 7/8" x 3" centers
- Shaft 5/8" diam. x 1 7/8" w/ 3/16" keyway
- Size 12" x 9" x 7"
- Shpg 26 lbs.

1/2 HP



ITEM 10-3341
\$79.95

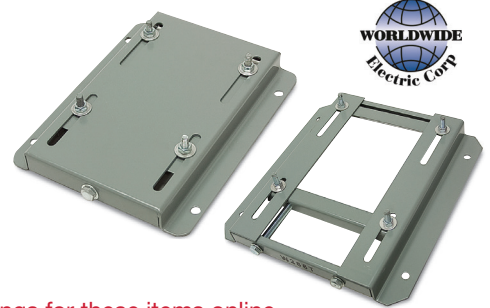
• Same as above except:

SPECIFICATIONS

- Model BL3-AL-TF-56C-2-B-D-.5
- Amperage 1.88/0.94 Amps
- Service Factor 1.15
- Power 1/2 HP
- Size 11 3/4" x 8 1/2" x 6 1/2"
- Shpg 20 lbs.

Electric Motor Slide Mounts

• Brand new, WORLDWIDE ELECTRIC T-frame motor slide base. Use to mount NEMA standard electric motor. Simplifies alignment and positioning, ideal for tensioning belts. Steel construction with baked-on primer. Washers included.



Find dimensional specifications and drawings for these items online.

ITEM	Compatible Motor Frame Size	Slide Length	Adjusting Screw	Base Mount Centers	Foot Print	Shpg.	Price
10-2431-56	56	3"	1	7 5/8" x 5 3/4"	10 5/8" x 6 1/2"	5 lbs.	\$16.75
10-2431-143T	143	3"	1	7 1/2" x 6 3/4"	10 1/2" x 7 1/2"	8 lbs.	\$32.25
10-2431-145T	145	3"	1	7 1/2" x 7 3/4"	10 1/2" x 8 1/2"	9 lbs.	\$32.25
10-2431-182T	182	3"	2	9" x 8 1/2"	12 3/4" x 9 1/2"	13 lbs.	\$43.85
10-2431-184T	184	3"	2	9" x 9 1/2"	12 3/4" x 10 1/2"	13 lbs.	\$43.85
10-2431-213T	213	3 1/2"	2	10 1/2" x 9 1/2"	15" x 11"	18 lbs.	\$65.20
10-2431-215T	215	3 1/2"	2	10 1/2" x 11"	15" x 12 1/2"	20 lbs.	\$65.20
10-2431-254T	254	4"	2	12 1/2" x 13 1/4"	17 3/4" x 15 1/8"	22 lbs.	\$88.85
10-2431-256T	256	4"	2	12 1/2" x 15"	17 3/4" x 16 7/8"	23 lbs.	\$88.85
10-2431-284T	284	4 1/2"	2	14" x 15"	19 3/4" x 16 7/8"	27 lbs.	\$99.90
10-2431-286T	286	4 1/2"	2	14" x 16 1/2"	19 3/4" x 18 3/8"	28 lbs.	\$99.90
10-2431-324T	324	5 1/4"	2	16" x 17"	22 3/4" x 19 1/4"	38 lbs.	\$145.40
10-2431-326T	326	5 1/4"	2	16" x 18 1/2"	22 3/4" x 20 3/4"	39 lbs.	\$145.40