

Swivel Plate Casters

New, various manufacturers plate mount swivel casters.

| ITEM | Wheel Size | Load Capacity | Wheel Material | Mtg. Height | Shpg. | Price |
|-----------|------------|---------------|-----------------------|-------------|----------|----------------|
| 1-4963* | 2½" x 1⅛" | 100 | Soft Rubber | 3¼" | 2 lbs. | \$1.95 |
| 1-5175 | 3" x 1¾" | 300 | Sintered Iron | 4¼" | 3 lbs. | \$8.99 |
| 1-5294 | 3" x 1¼" | 180 | Thermo-plastic Rubber | 3¾" | 2.5 lbs. | \$2.95 |
| 1-4469 | 3¼" x 1¼" | 110 | Plastic | 4¼" | 1.5 lbs. | \$2.95 |
| 1-4380 | 3⅝" x 2⅞" | 143 | Solid Rubber | 4⅝" | 1 lbs. | \$3.95 |
| 1-5136 | 4" x 1¼" | 220 | Thermo-plastic Rubber | 3⅞" | 2 lbs. | \$7.99 |
| 1-4213 | 4" x 1¼" | 350 | Polyolefin | 5⅞" | 3 lbs. | \$4.95 |
| 1-5088 | 4" x 1⅝" | 358 | Polyolefin | 4⅞" | 5 lbs. | \$4.95 |
| 1-4958 | 4" x 1⅝" | 420 | Hard Rubber | 5" | 4 lbs. | \$4.95 |
| 1-5018 | 5" x 1" | 125 | Thermo-plastic Rubber | 5¾" | 3 lbs. | \$2.99 |
| 1-5387* | 5" x 1¼" | | Yoke | | 2 lbs. | \$1.49 |
| 1-4299** | 5" x 1¼" | 280 | Thermo-plastic Rubber | 6⅞" | 2 lbs. | \$11.95 |
| 1-4783 | 5" x 1¼" | 275 | Thermo-plastic Rubber | 6⅞" | 4 lbs. | \$3.99 |
| 1-4794*** | 5" x 1¼" | 275 | Polyurethane | 6½" | 4 lbs. | \$4.99 |
| 1-5874** | 5" x 1¼" | 220 | Polyurethane | 6½" | 3 lbs. | \$4.95 |
| 1-5863** | 5" x 2" | 660 | Elastic-Tire | 6¾" | 7 lbs. | \$9.95 |



2½" Brass Plated Ball Caster w/Plate

ITEM 1-5054
\$1.29



• New, SHEPHERD die cast ball wheel caster. No exposed axle, easy rolling. Use for furniture, office equipment. Bright brass finish.

SPECIFICATIONS

- Wheel Size 2½" dia.
- Load Capacity 100 lbs.
- Mounting height 3"

- Mounting Plate 1½" x 1½"
- Mount 4 countersunk holes, ⅜" dia., 1" x 1"
- Shpg. 1 lb.

2.5" x .875" Swivel Plate Dual Caster w/Isolation Pads



ITEM 1-1545
\$7.95

• Used. Ball bearing dual wheel swivel caster. Built for use under heavy office equipment. 4⅝" x 1¾" rubber pads on each end of plate. Individual bolt brakes for each wheel.

SPECIFICATIONS

- Wheel Size: Dual 2½" dia. x ⅞"
- Load Capacity 220 lbs.
- Top Plate: 9⅝" x 4⅞" x ⅝" thick

- Mounting height 3⅞"
- Mount: Four 1⅜" dia holes in plate on 3" x 7⅞" pattern with ⅝" holes in rubber pad directly above.
- Shpg. 9 lbs.

3" x 1¼" Swivel Plate Caster w/ Brake

ITEM 1-5412
\$3.95



• New, Colson swivel plate caster.

SPECIFICATIONS

- Wheel Diameter 3" dia.
- Wheel Width 1¼" Wide
- Load Capacity 180 lbs.
- Mounting Height 3¾"
- Brake Wheel lock
- Top Plate 4⅞" x 3⅞"
- Mount 4 holes on 3½" x 2⅞" centers

- Bolt Holes ⅝" dia.
- Wheel Tread Material: Gray Thermoplastic Rubber
- Caster Wheel Core Material Plastic
- Caster Wheel Bearing Ball
- Shpg. 2.5 lbs.

40.5mm x 17mm Swivel Plate Caster



ITEM 1-3312
.99¢

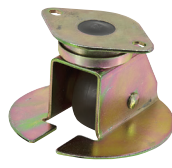
• New, FAULTLESS swivel plate caster for furniture. Polyurethane wheel. Brass finish yoke.

SPECIFICATIONS

- Wheel size 40.5mm x 17mm
- Load capacity 70 lbs.
- Top plate 1½" x 2" x ⅜"
- Mounting height 2"
- Mount 4 bolt on 26mm x 42mm ctrs.
- Bolt holes 7mm diameter
- Shpg. ¼ lb.

2¾" x 1⅜" Air Cargo Swivel Caster

ITEM 1-5345
\$4.99



• New, FAULTLESS model 26382 swivel plate air cargo caster. Corrosion resistant zinc dichromate plated yoke. Polyflex wheel. Needle wheel bearings. Precision sealed ball bearing swivel. Toe protection flange and metal thread guards. Fully sealed raceway. Heavy duty ⅜" dia. axle.

SPECIFICATIONS

- Wheel Size 2¾" dia. x 1⅜" wide
- Load Capacity 375 lbs.
- Top Plate 4⅞" x 3"

- Mounting height 4⅞"
- Mount 2 bolt on 3⅞" centers
- Bolt Holes ⅝"
- Shpg. 3 lbs.

3" x 2" Dual Wheel Swivel Plate Caster

ITEM 1-4311
\$2.95



• New, SHEPARD model PTS75120GR-U dual wheel swivel plate caster. Plated steel mounting plate. Thermoplastic elastomer wheels. Each wheel is ⅞" wide overall width is 2".

SPECIFICATIONS

- Wheel Size 3" dia. x 2" wide
- Load Capacity 165 lbs.
- Top Plate 3⅞" x 2⅞"

- Mounting height 4⅞"
- Mount 4 bolt on 2" x 1½" centers
- Bolt Holes ⅝" dia.
- Shpg. 1½ lbs.

2½" x 1¾" Swivel Plate Caster



ITEM 1-5408
\$2.95

• New, Colson swivel plate caster.

SPECIFICATIONS

- Wheel Diameter 2½" dia.
- Wheel Width 1⅝" Wide
- Load Capacity 175 lbs.
- Mounting Height 3½"
- Brake None
- Top Plate 3⅝" x 2⅝"
- Mount 4 holes on 3"-2¾" x 1¾" centers
- Bolt Holes ⅝" dia.
- Wheel Tread Material Black Hard Plastic
- Caster Wheel Core Material Plastic
- Caster Wheel Bearing Plain
- Shpg. 2.5 lbs.

2⅞" x ½" Dual Wheel Swivel Plate Caster w/ Brake



ITEM 1-4256

• New, ALBION dual wheel swivel plate caster with wheel lock. Solid nylon wheels.

SPECIFICATIONS

- Wheel Size: 2⅞" dia. x ½" wide
- Load Capacity: 100 lbs.
- Top Plate 2⅝" x 2⅝"

- Mounting height 3⅝"
- Mount: 4 holes on 2" x 1⅝" centers
- Bolt Holes ⅝" dia.
- Shpg. ¾ lb.

5" x 1.25" Swivel Plate Caster w/ Brake



ITEM 1-3287
\$6.99

• Used, RHOMBUS swivel plate caster. Thermoplastic polyurethane tire with plastic wheel. Plated steel yoke. Wheel brake.

SPECIFICATIONS

- Wheel size 5" dia. x 1¼"
- Load capacity 220 lbs.
- Top plate 3¾" x 2¾" x ⅞"

- Mounting height 6"
- Mount 2⅞" x 1⅞"
- Bolt holes ⅝" dia.
- Shpg. 3 lbs.