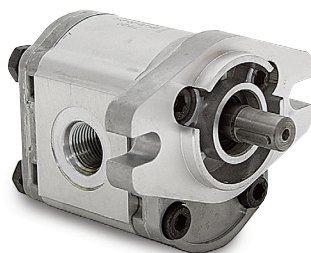


**Dynamic Gear Pumps
GP-F10 Series**

- Brand new DYNAMIC GP-F10 hydraulic gear pumps. **SPECIFICATIONS FOR GP-F10 SERIES**
Aluminum housing • Mount SAE AA 2 bolt
- Shaft 1/2" diam. x 1 1/16" with 1/8" keyway

Choose pump suffix key for rotation facing shaft.

Rotation Suffix Key: **-B CW (clockwise)** **-D CCW (counter-clockwise)**



ITEM	Suffix Code	Displ.	GPM at 2000 RPM	PSI Peak	Ports IN	RPM Max.	Ports OUT	Shpg.	Price
9-7762-	□	0.07	0.56	3770	SAE 8	6000	SAE 6	4 lbs.	\$130.15
9-7763-	□	0.12	0.97	3770	SAE 8	6000	SAE 6	5 lbs.	\$130.15
9-7764-	□	0.16	1.29	3770	SAE 8	5000	SAE 6	5 lbs.	\$130.15
9-7765-	□	0.20	1.61	3770	SAE 8	5000	SAE 6	5 lbs.	\$130.15
9-7766-	□	0.25	2.01	3625	SAE 8	5000	SAE 6	6 lbs.	\$141.25
9-7767-	□	0.31	2.50	3625	SAE 8	4000	SAE 6	6 lbs.	\$141.25
9-7768-	□	0.37	2.98	3480	SAE 8	4000	SAE 6	6 lbs.	\$141.25
9-7769-	□	0.49	3.95	3480	SAE 8	4000	SAE 6	7 lbs.	\$141.25
9-7770-	□	0.55	4.43	3190	SAE 8	3000	SAE 6	8 lbs.	\$141.25
9-7771-	□	0.66	5.31	3190	SAE 8	3000	SAE 6	9 lbs.	\$141.25
9-7772-	□	0.82	6.60	3190	SAE 8	3000	SAE 6	10 lbs.	\$141.25

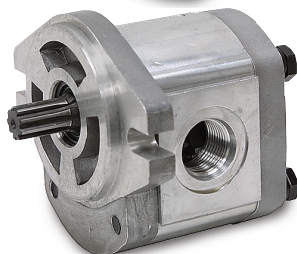
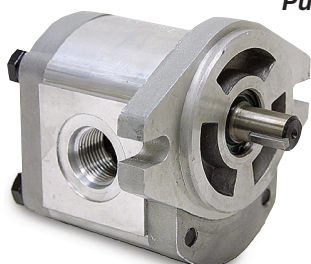
GP-F20 Series

- Brand new DYNAMIC GP-F20 hydraulic gear pumps. **SPECIFICATIONS FOR GP-F20 SERIES**
Aluminum housing with cast iron end covers. • Mount: SAE A 2 bolt

Pumps available in shaft sizes of 5/8" diam. x 1 1/4" 9T spline or 5/8" diam. x 1 1/4" with 5/32" wide keyway

Choose pump suffix key for shaft type and rotation facing shaft.

-A CW Splined -B CW Keyed -C CCW Splined -D CCW Keyed



ITEM	Suffix Code	Displ.	GPM at 2000 RPM	PSI Peak	Ports IN	RPM Max.	Ports OUT	Shpg.	Price
9-7786-	□	0.24	1.93	3650	SAE 12	3600	SAE 10	10 lbs.	\$152.35
9-7787-	□	0.36	2.90	3650	SAE 12	3600	SAE 10	10 lbs.	\$152.35
9-7788-	□	0.48	3.87	3650	SAE 12	3600	SAE 10	10 lbs.	\$152.35
9-7789-	□	0.61	4.91	3650	SAE 12	3600	SAE 10	10 lbs.	\$152.35
9-7790-	□	0.73	5.88	3650	SAE 12	3600	SAE 10	11 lbs.	\$152.35
9-7791-	□	0.85	6.84	3650	SAE 12	3600	SAE 10	11 lbs.	\$159.95
9-7792-	□	0.97	7.81	2900	SAE 12	3600	SAE 10	11 lbs.	\$162.25
9-7793-	□	1.22	9.82	2900	SAE 12	3600	SAE 10	11 lbs.	\$163.40
9-7794-	□	1.52	12.24	2900	SAE 12	3600	SAE 10	12 lbs.	\$163.40
9-7795-	□	1.83	14.74	2300	SAE 16	3600	SAE 12	12 lbs.	\$163.40
9-7796-	□	1.95	15.70	2300	SAE 16	3600	SAE 12	12 lbs.	\$163.40

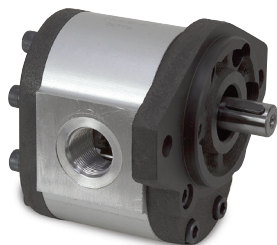
GP-F25 Series

- Brand new DYNAMIC GP-F25 hydraulic gear pumps. **SPECIFICATIONS FOR GP-F25 SERIES**
Aluminum housing with cast iron end covers. • Mount: SAE B 2 bolt

Pumps available in shaft sizes of 7/8" diam. x 1.81 13T spline or 7/8" diam. x 1.61" with 1/4" keyway

Choose pump suffix key for shaft type and rotation facing shaft.

-A CW Splined -B CW Keyed -C CCW Splined -D CCW Keyed



ITEM	Suffix Code	Displ.	GPM at 2000 RPM	PSI Peak	Ports IN	RPM Max.	Ports OUT	Shpg.	Price
9-12240-	□	1.34	10.79	3625	SAE 16	3000	SAE 12	20 lbs.	\$257.60
9-12241-	□	1.57	12.64	3625	SAE 16	3000	SAE 12	20 lbs.	\$257.60
9-12242-	□	2.07	16.67	3625	SAE 16	3000	SAE 12	22 lbs.	\$257.60
9-12243-	□	2.38	19.16	3625	SAE 16	3000	SAE 12	22 lbs.	\$295.70
9-12244-	□	2.62	21.1	3625	SAE 16	2800	SAE 12	22 lbs.	\$295.70
9-12245-	□	3.11	25.04	3625	SAE 16	2800	SAE 12	23 lbs.	\$295.70
9-12246-	□	3.84	30.92	2900	SAE 16	2800	SAE 12	24 lbs.	\$295.70
9-12247-	□	4.27	34.38	2900	SAE 20	2500	SAE 16	25 lbs.	\$313.15
9-12248-	□	4.76	38.33	2900	SAE 20	2300	SAE 16	26 lbs.	\$313.15
9-12249-	□	5.43	43.72	2600	SAE 20	2000	SAE 16	27 lbs.	\$313.15